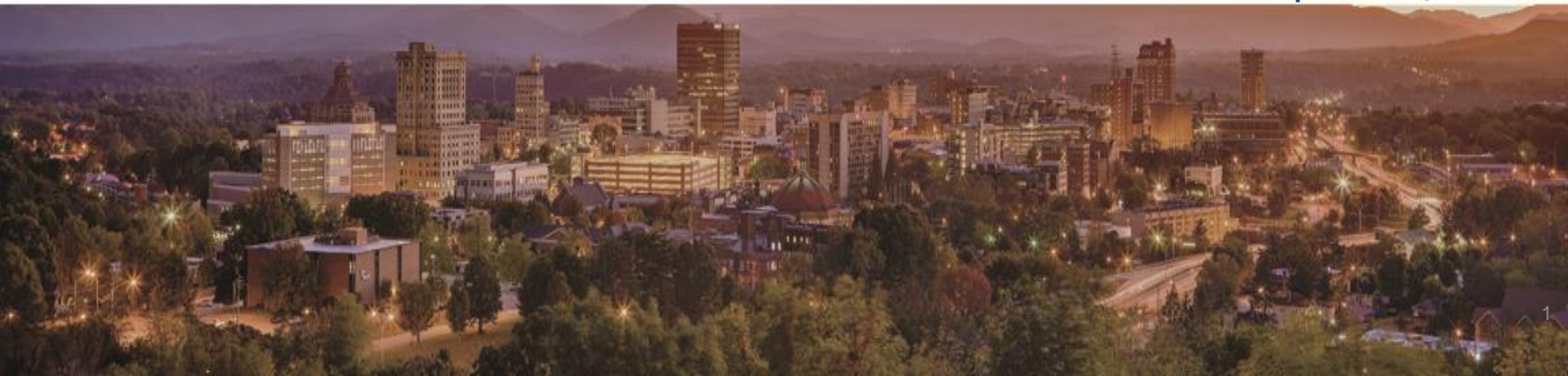




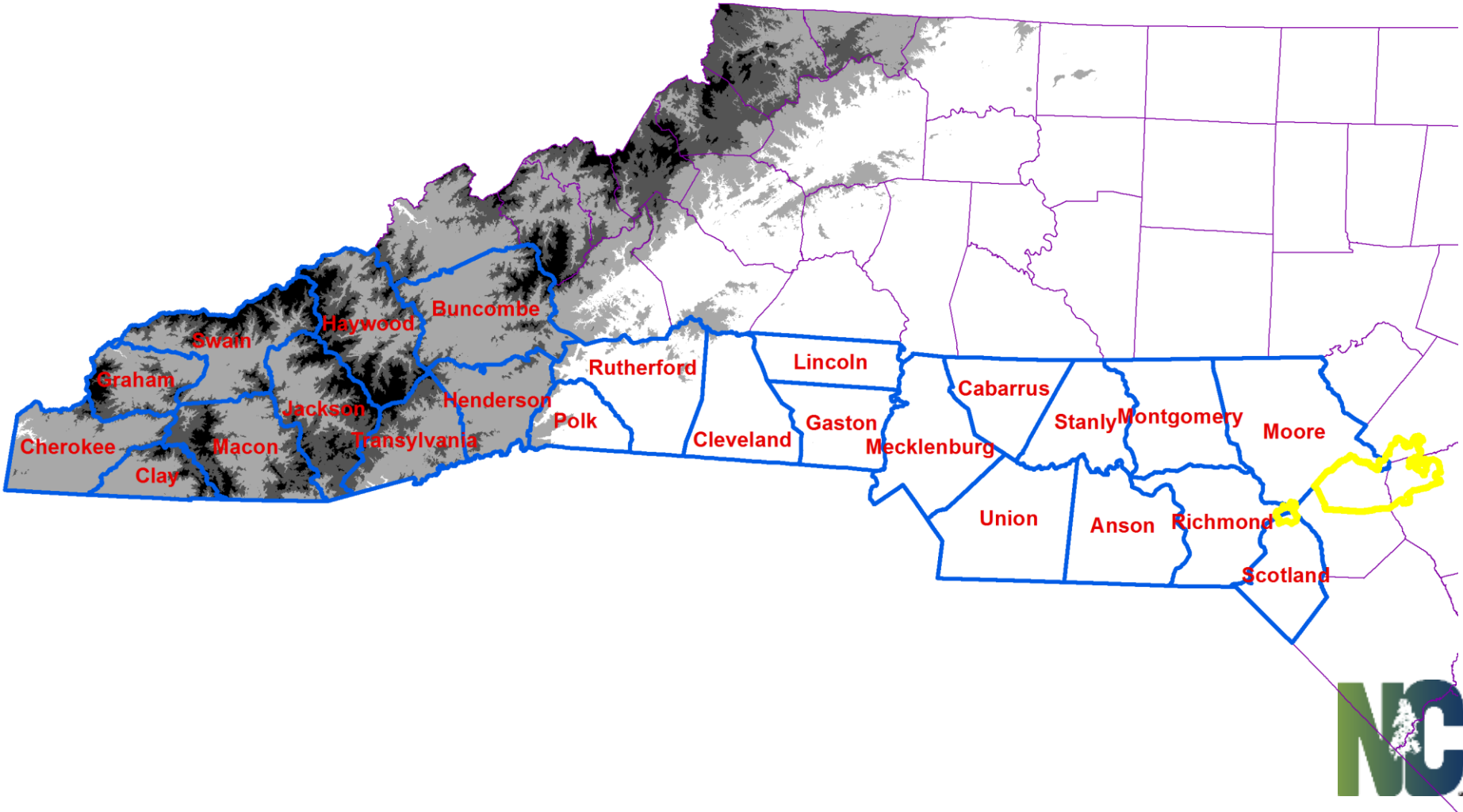
Statewide Orthoimagery Program

*Southern Piedmont and Mountains 2015
Coastal 2016*

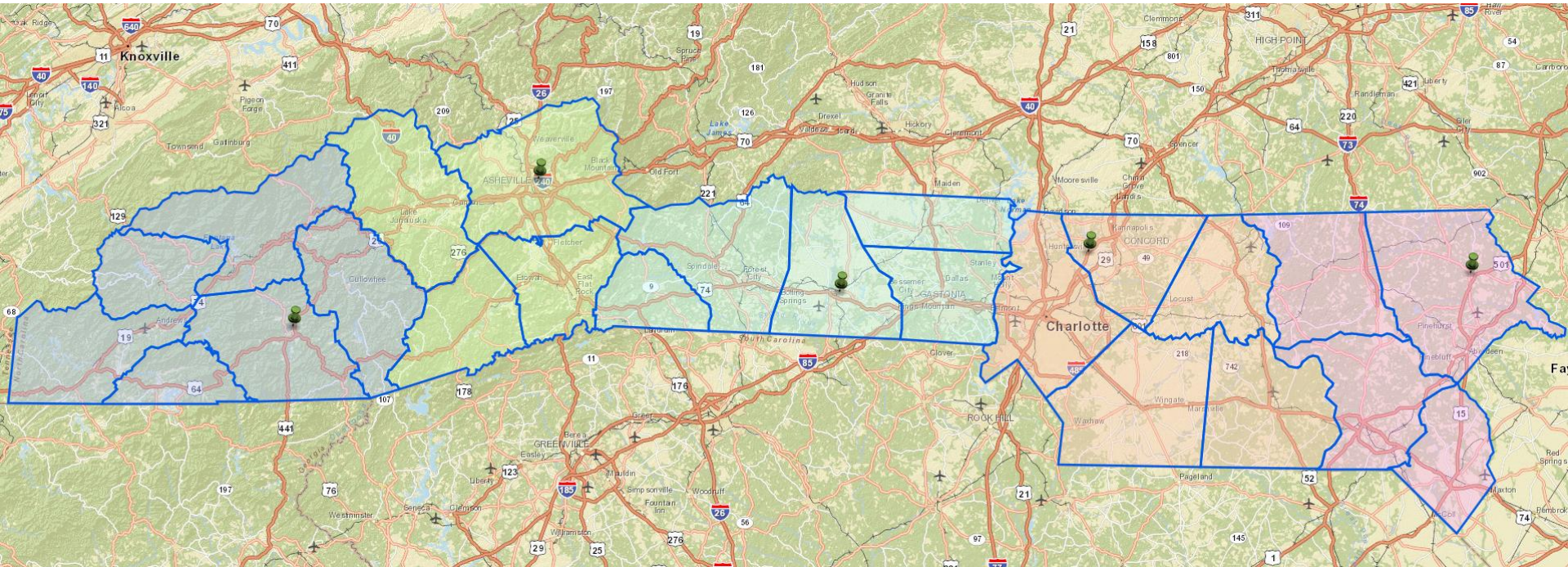
Statewide Mapping Advisory Committee
April 20, 2016







Southern Piedmont & Mountains 2015



Distribution Schedule



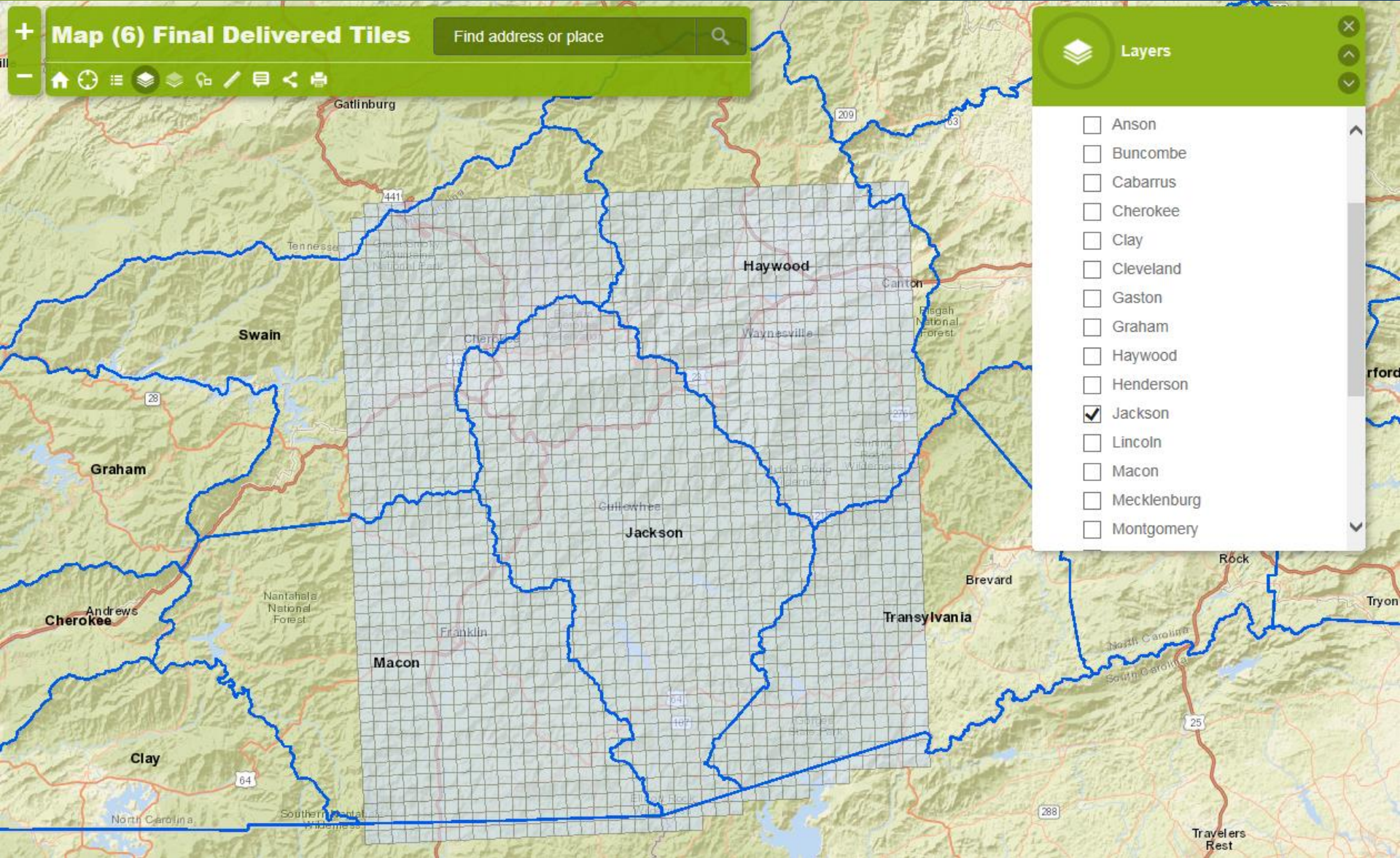
-  Asheville - January 19
-  Franklin - January 20
-  Shelby - January 21
-  Carthage - January 27
-  Concord - January 28



NC OneMap Cycle 1

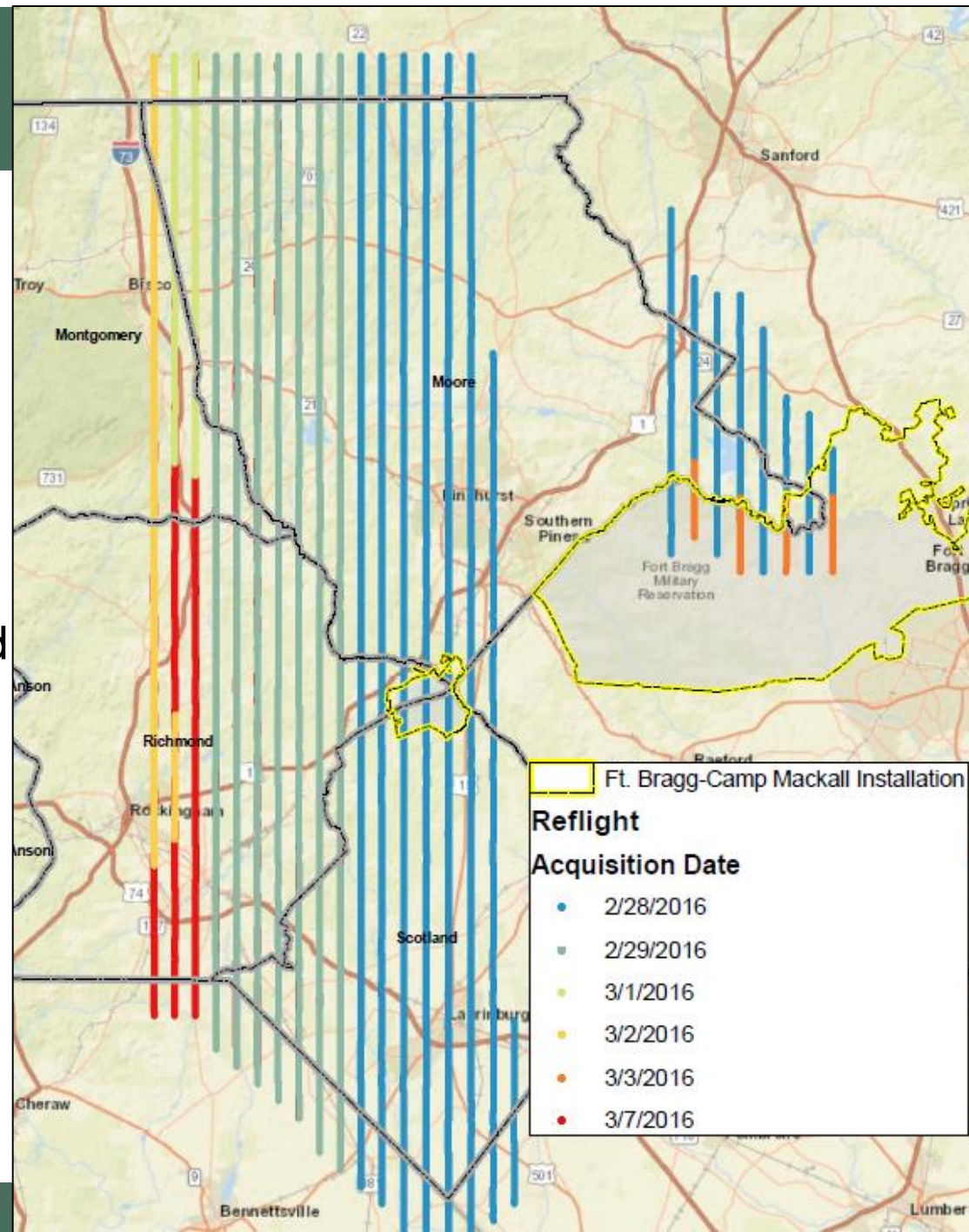


NC 911 Distribution

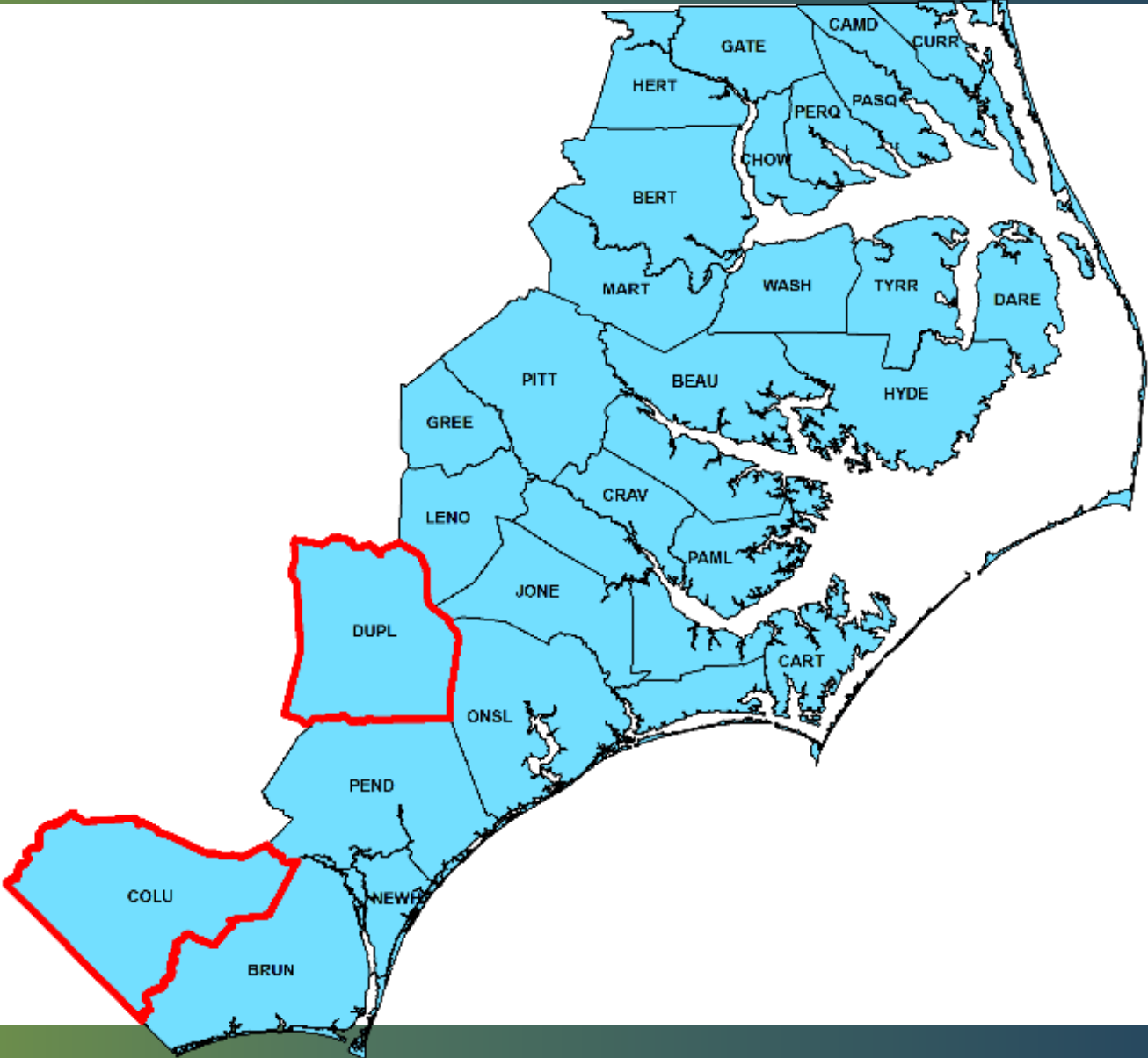


Reflight Status

- March 7: Acquisition completed
- April 27: Visual QC Begins
- June: Redelivery to PSAP and NCOM



Coastal 2016

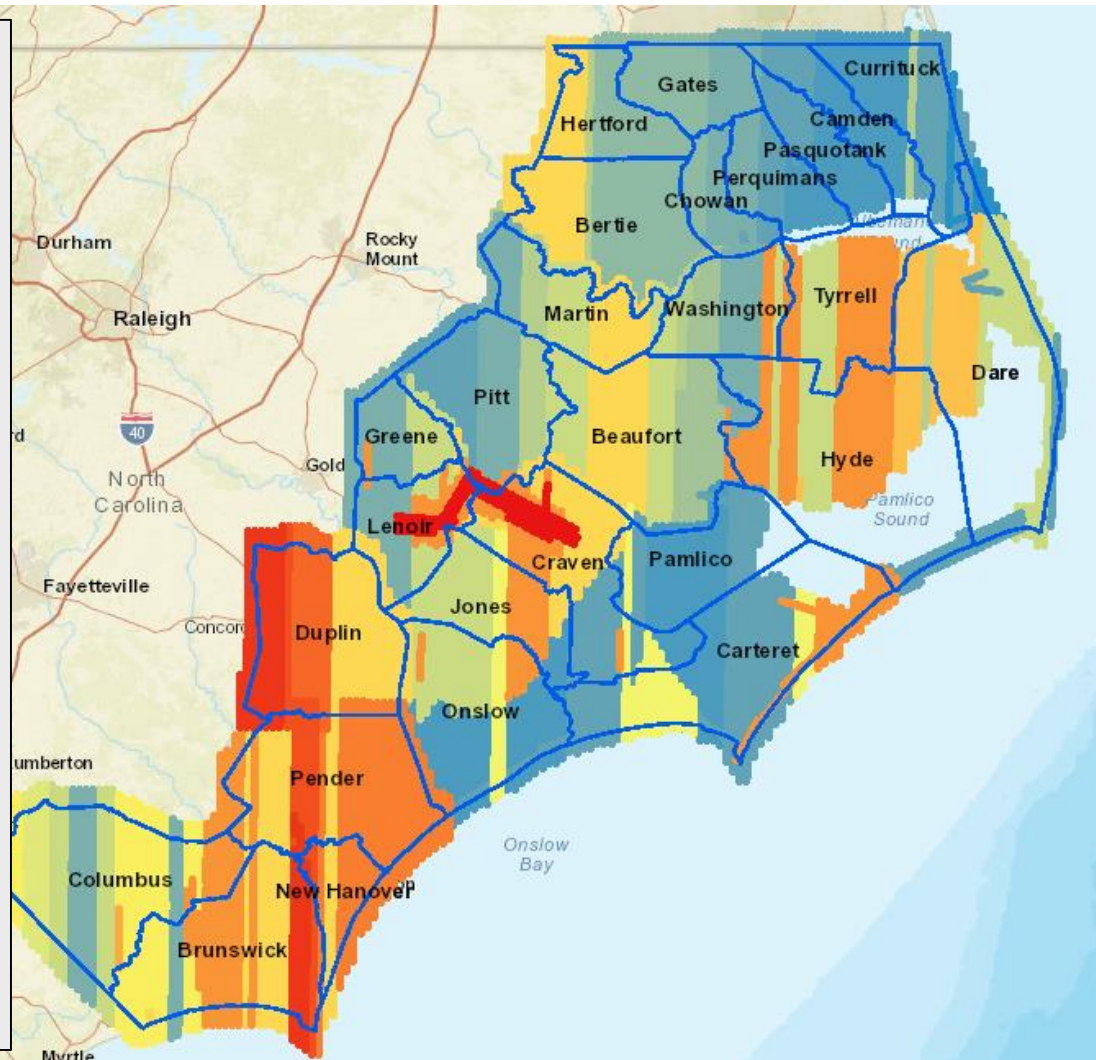


Coastal 2016 Status

Acquisition Date	Percent	Percent by Month
29-Jan-16	0.12%	
30-Jan-16	2.32%	
31-Jan-16	3.06%	5.51%
01-Feb-16	7.45%	
02-Feb-16	1.41%	
08-Feb-16	0.63%	
10-Feb-16	0.65%	
11-Feb-16	7.54%	
13-Feb-16	2.47%	
14-Feb-16	0.59%	
18-Feb-16	12.10%	
19-Feb-16	21.41%	
21-Feb-16	0.62%	
26-Feb-16	0.23%	
27-Feb-16	10.32%	
28-Feb-16	12.44%	
29-Feb-16	4.57%	82.43%
03-Mar-16	4.63%	
07-Mar-16	7.22%	
16-Mar-16	0.21%	12.06%

Acquisition Date

- 1/29/2016
- 1/30/2016
- 1/31/2016
- 2/1/2016
- 2/2/2016
- 2/8/2016
- 2/10/2016
- 2/11/2016
- 2/13/2016
- 2/14/2016
- 2/18/2016
- 2/19/2016
- 2/21/2016
- 2/26/2016
- 2/27/2016
- 2/28/2016
- 2/29/2016
- 3/3/2016
- 3/7/2016
- 3/16/2016



Coastal 2016 Next Steps

Item	Description	Schedule
QC Outreach	Setup QC Awareness and Training Schedule	June 2016
QC Training	Two-day hands on webinar	July 2016
QC Schedule	Visual QC for 26 Counties	August 2016 - October 2016