

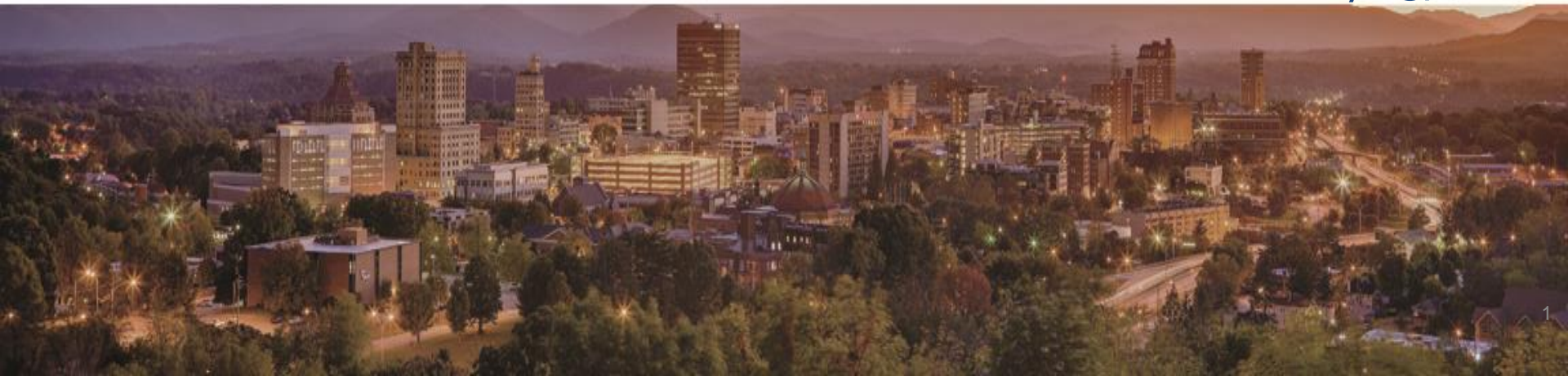


## *Statewide Orthoimagery Program*

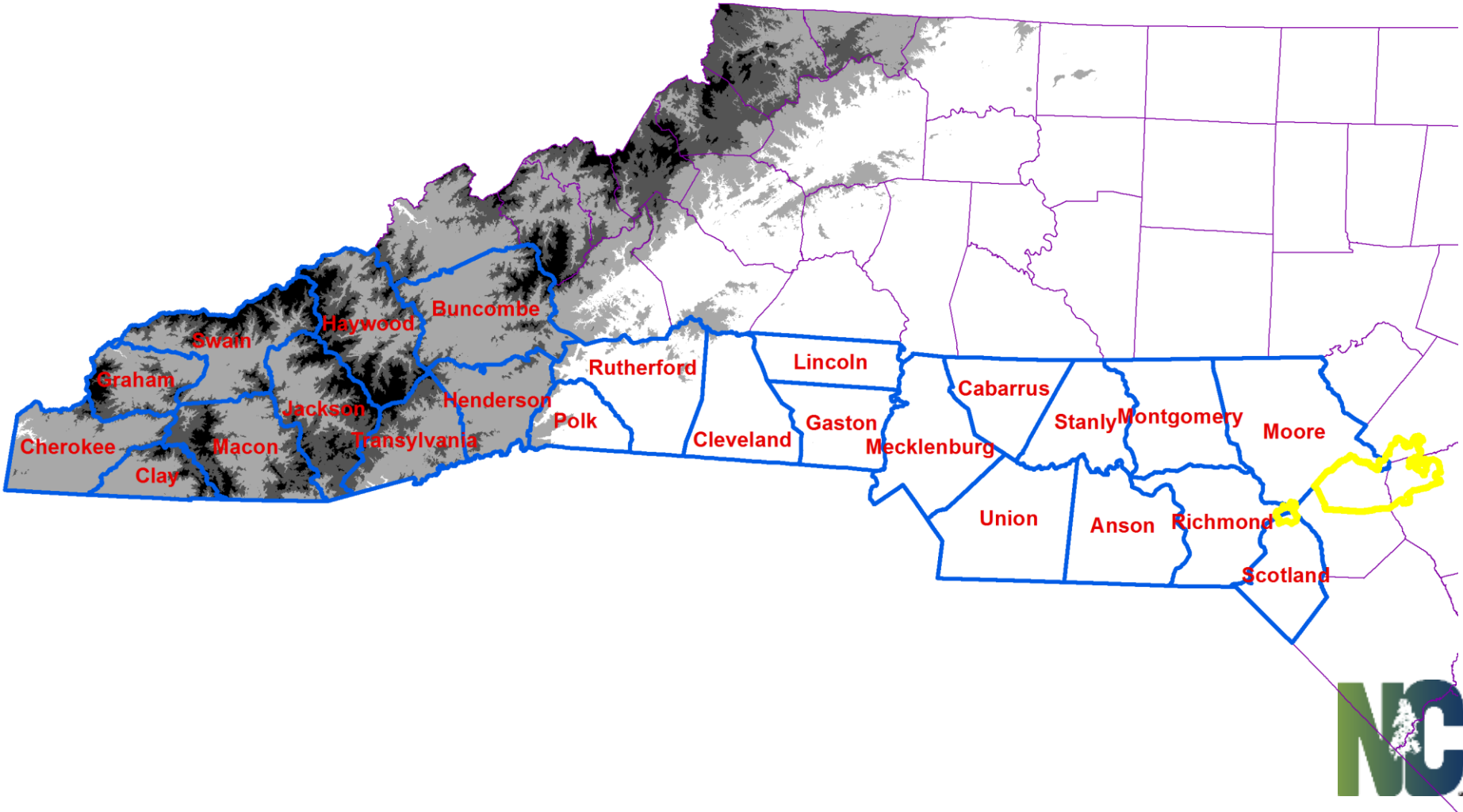
*Southern Piedmont and Mountains 2015  
Coastal 2016*

Statewide Mapping Advisory Committee

January 13, 2016

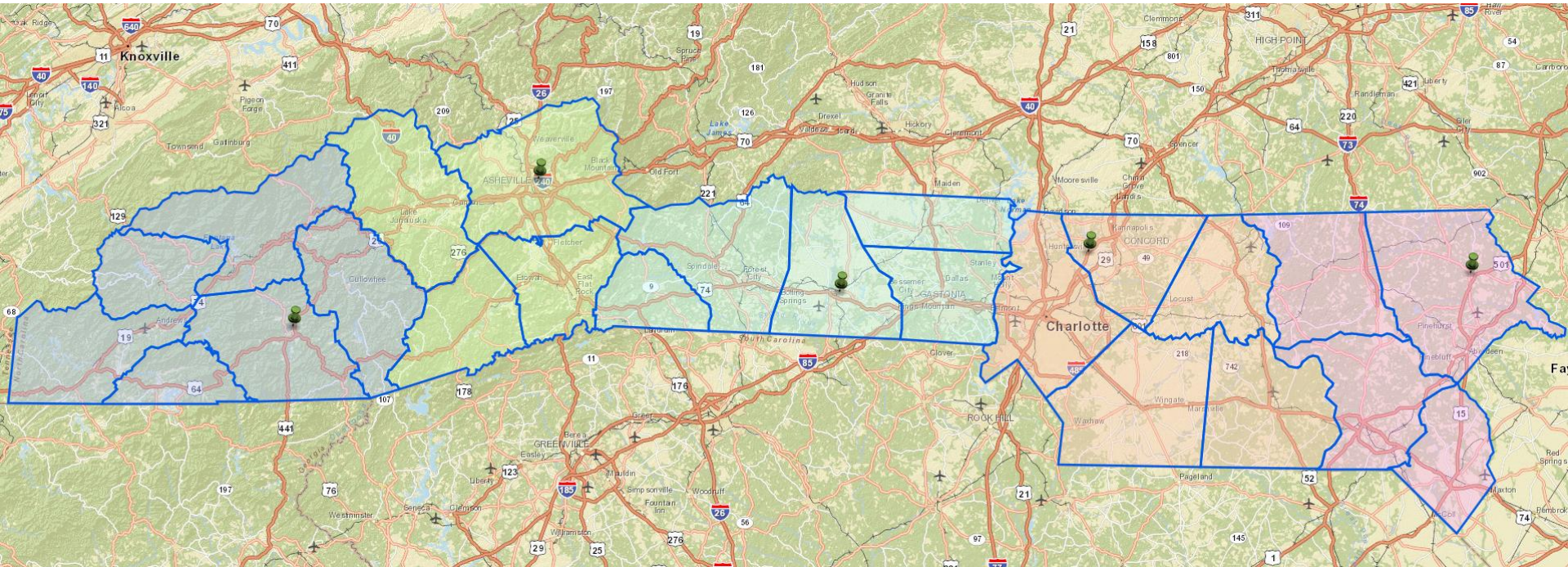




# Southern Piedmont & Mountains 2015





# Distribution Schedule

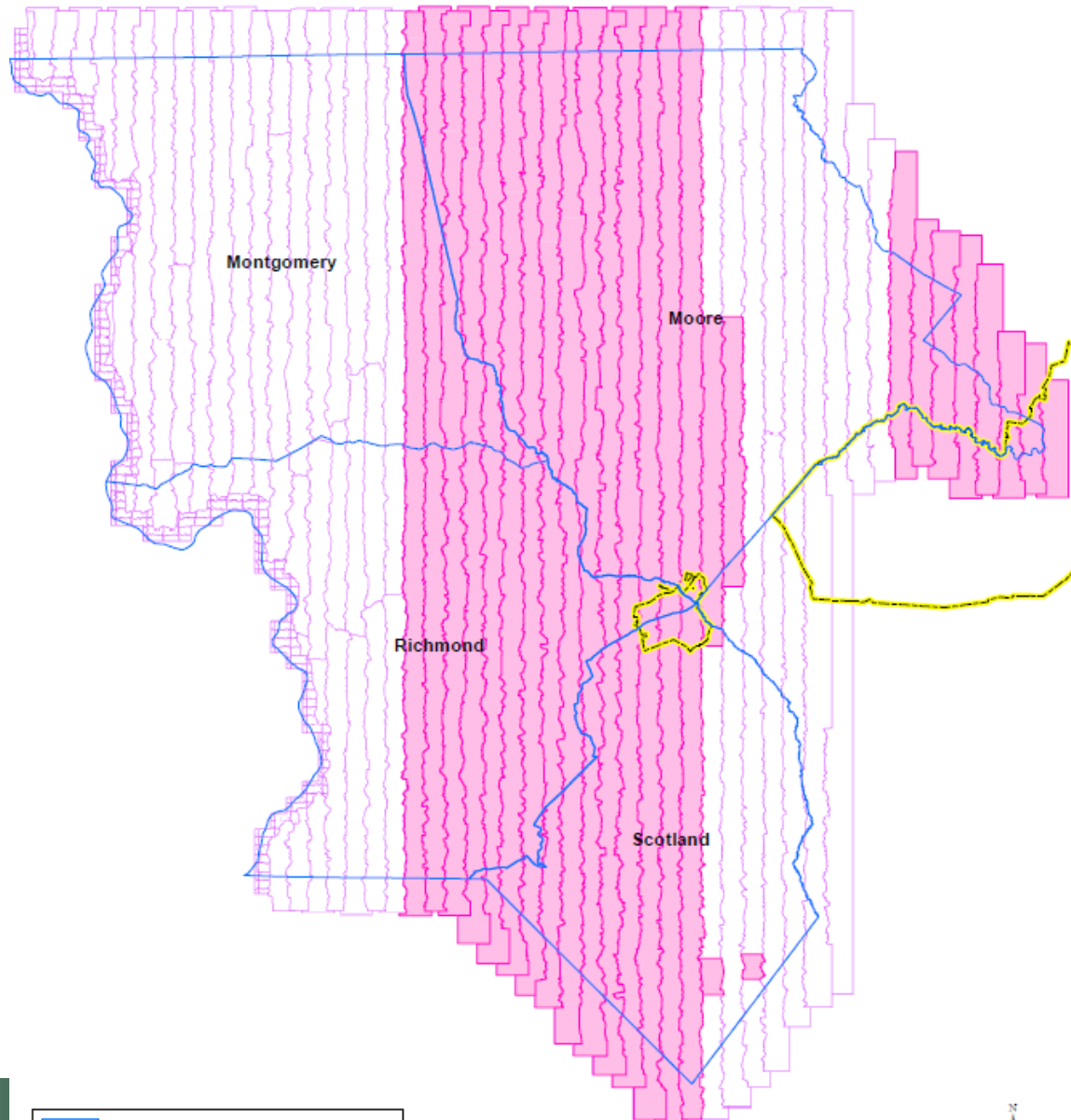


-  Asheville - January 19
-  Franklin - January 20
-  Shelby - January 21
-  Carthage - January 27
-  Concord - January 28

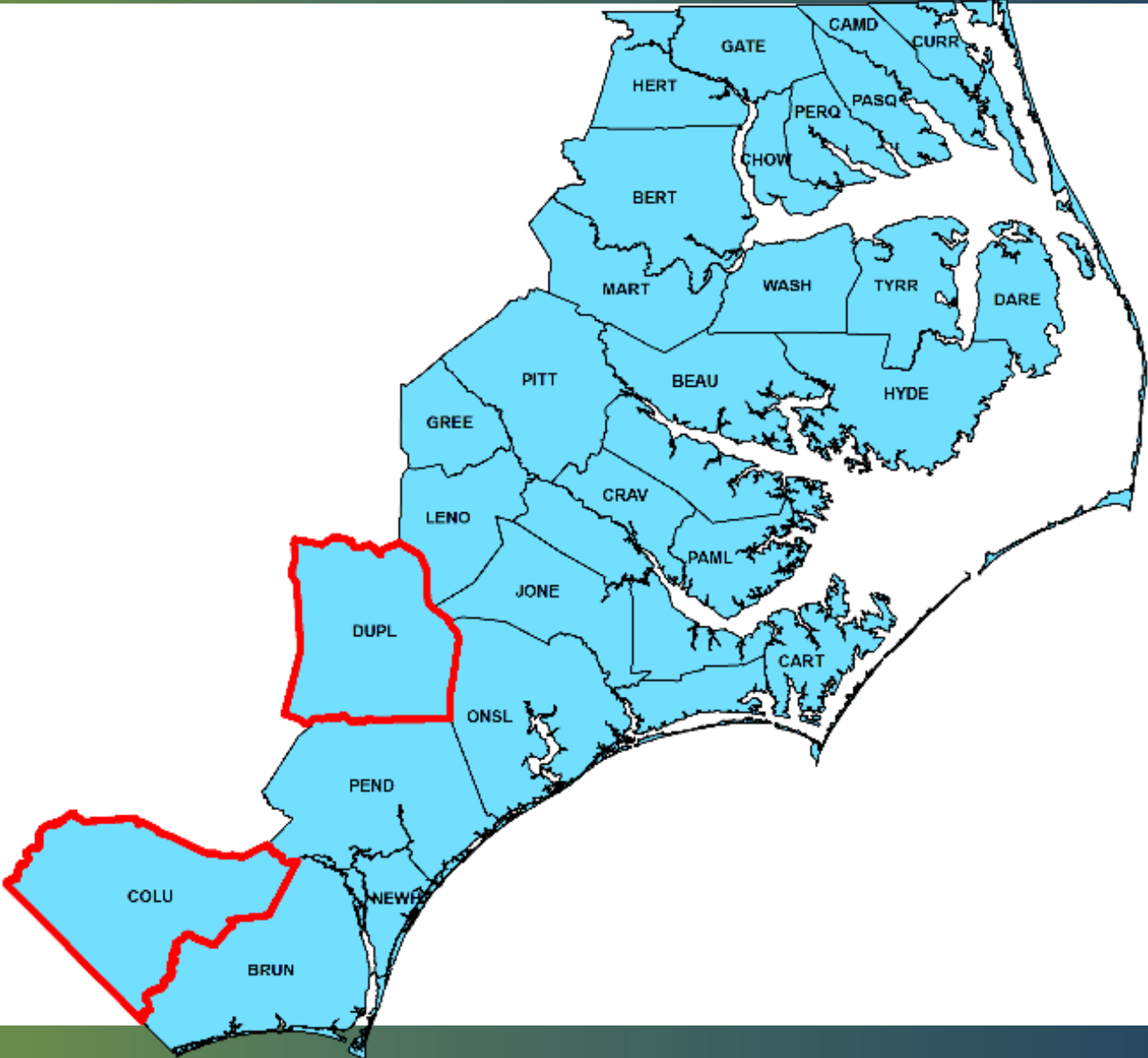


# Reflight Amendment

- 1,300 Tiles marked for reflight
- Did not meet specifications for blur
- Target end of June for final delivery

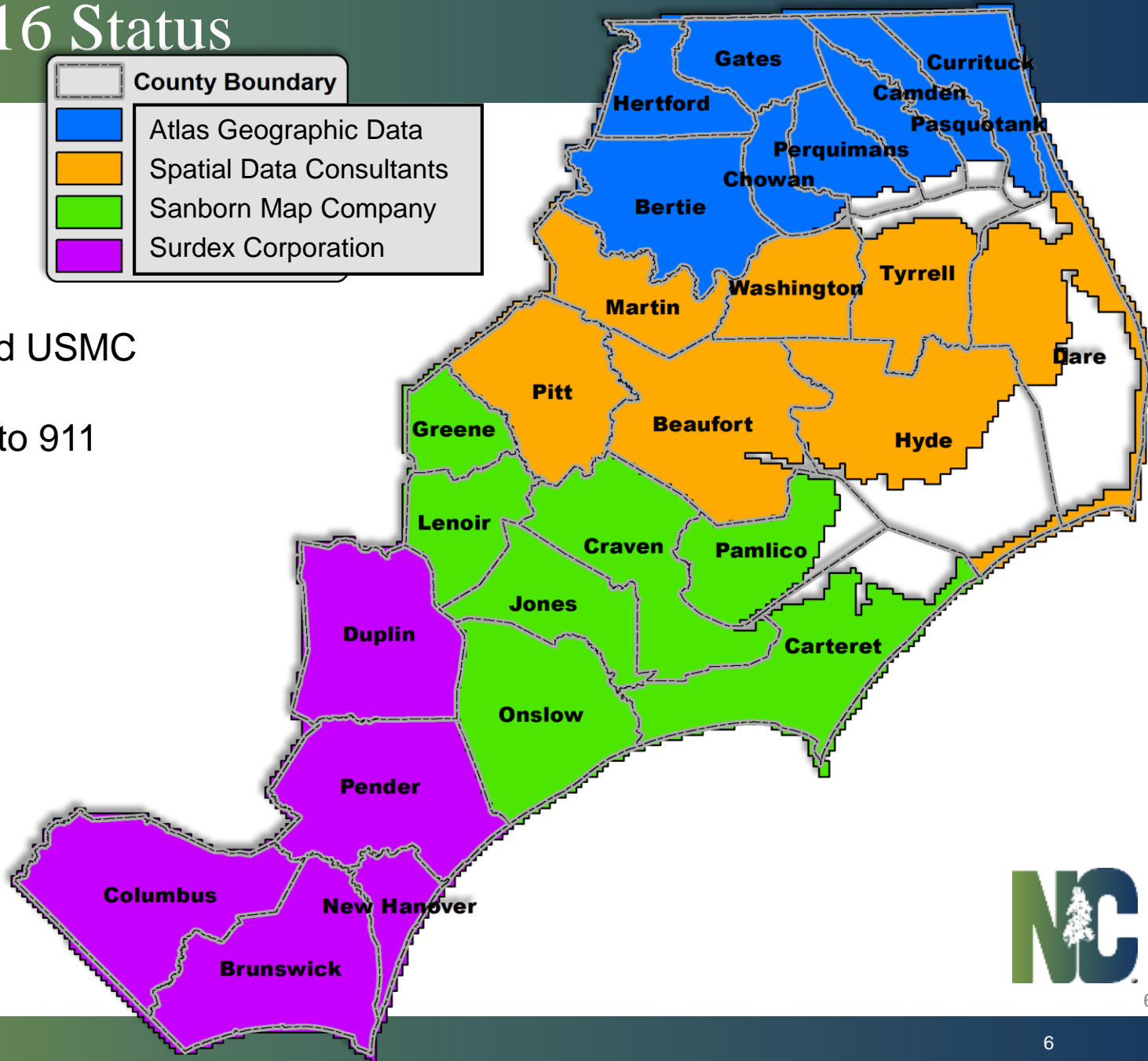
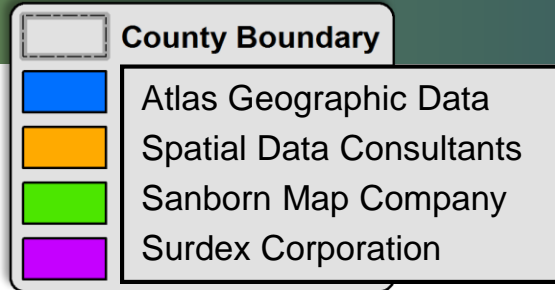


# Coastal 2016





# Coastal 2016 Status



- Harvey Point and USMC
- Internal release to 911