

Statewide Orthoimagery Program

Current Status and New Products

Ben Shelton
Program Manager

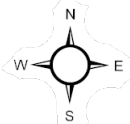
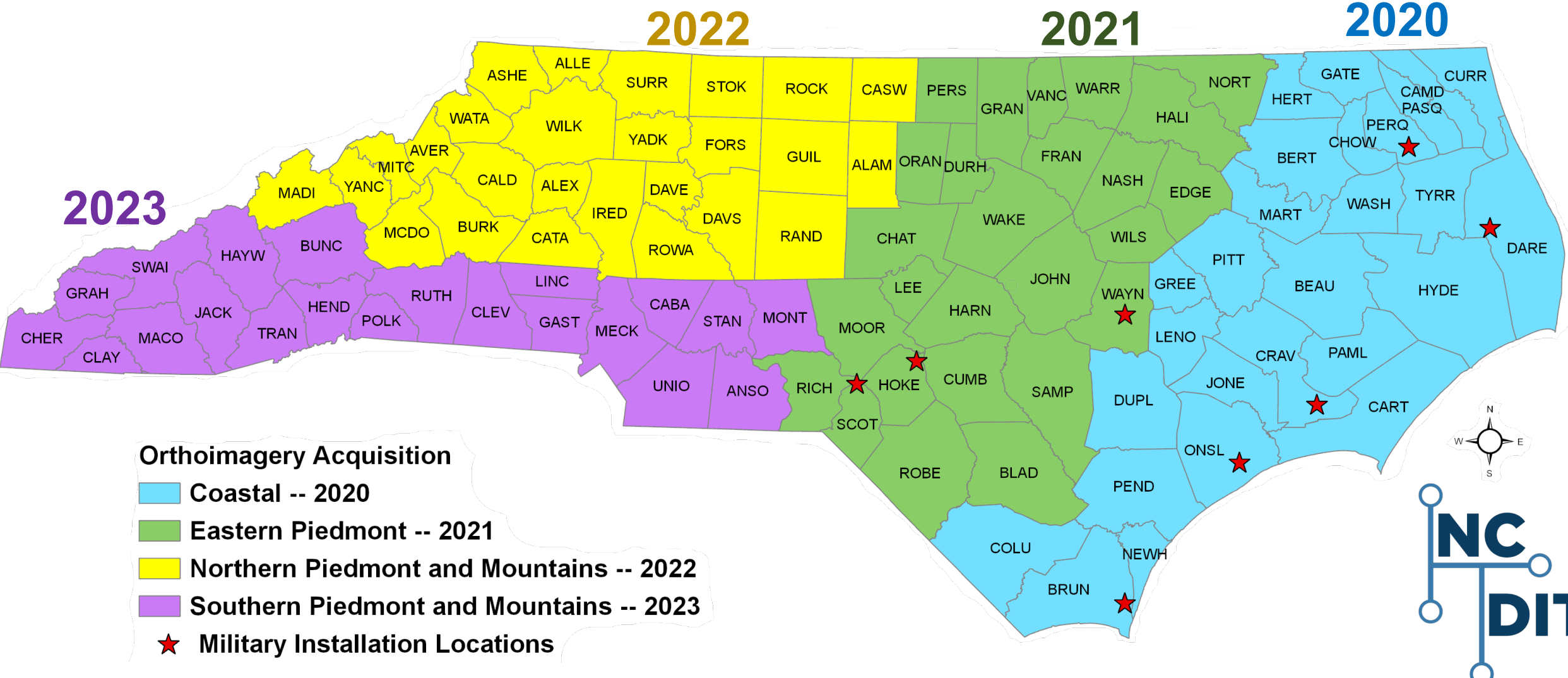
November 18, 2020



Approved Orthoimagery Program Cycle



4-Year Cycle



CO20 Project Area

- 27 counties
- 15,678 square miles
- 17,483 tiles (5,000' by 5,000')

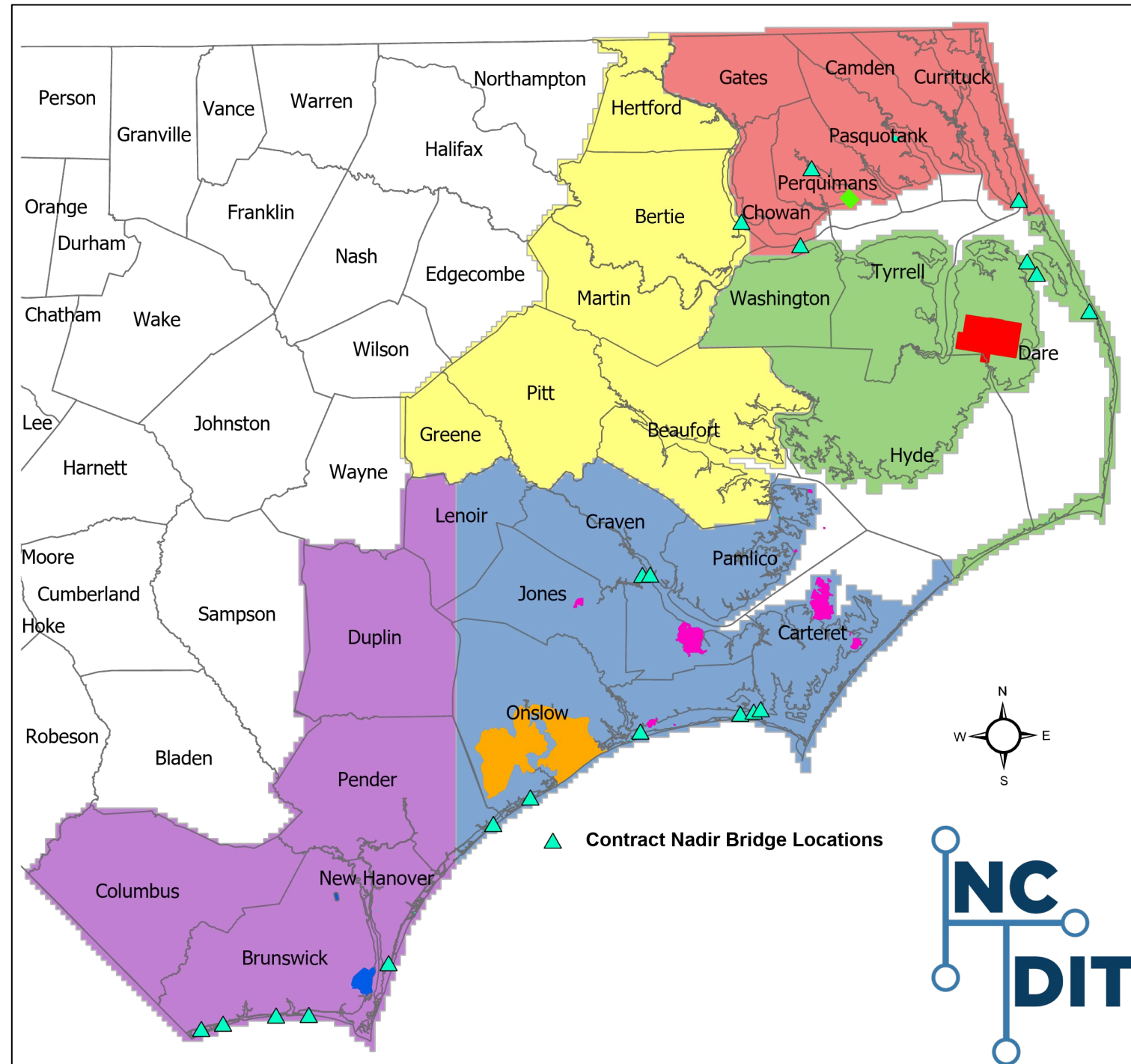
- Nadir Orthoimagery AOI:
 - Wilmington
 - Greenville
 - 18 major bridges

- Coordination with Military Operations:
Military Boundaries

- Harvey Point
- US Coast Guard Base Elizabeth City
- USAF Dare Bombing Range
- USMCB Camp Lejeune
- USMCAS Cherry Point
- US Army Military Ocean Terminal Sunny Point

Study Area

- SA1 - Quantum Spatial
- SA2 - Surdex Corporation
- SA3 - Sanborn Map Company
- SA4 - Atlas Geographic Data
- SA5 - Spatial Data Consultants



CO20 Project Timeline



*Note: Change in delivery from mid-November to week of December 7



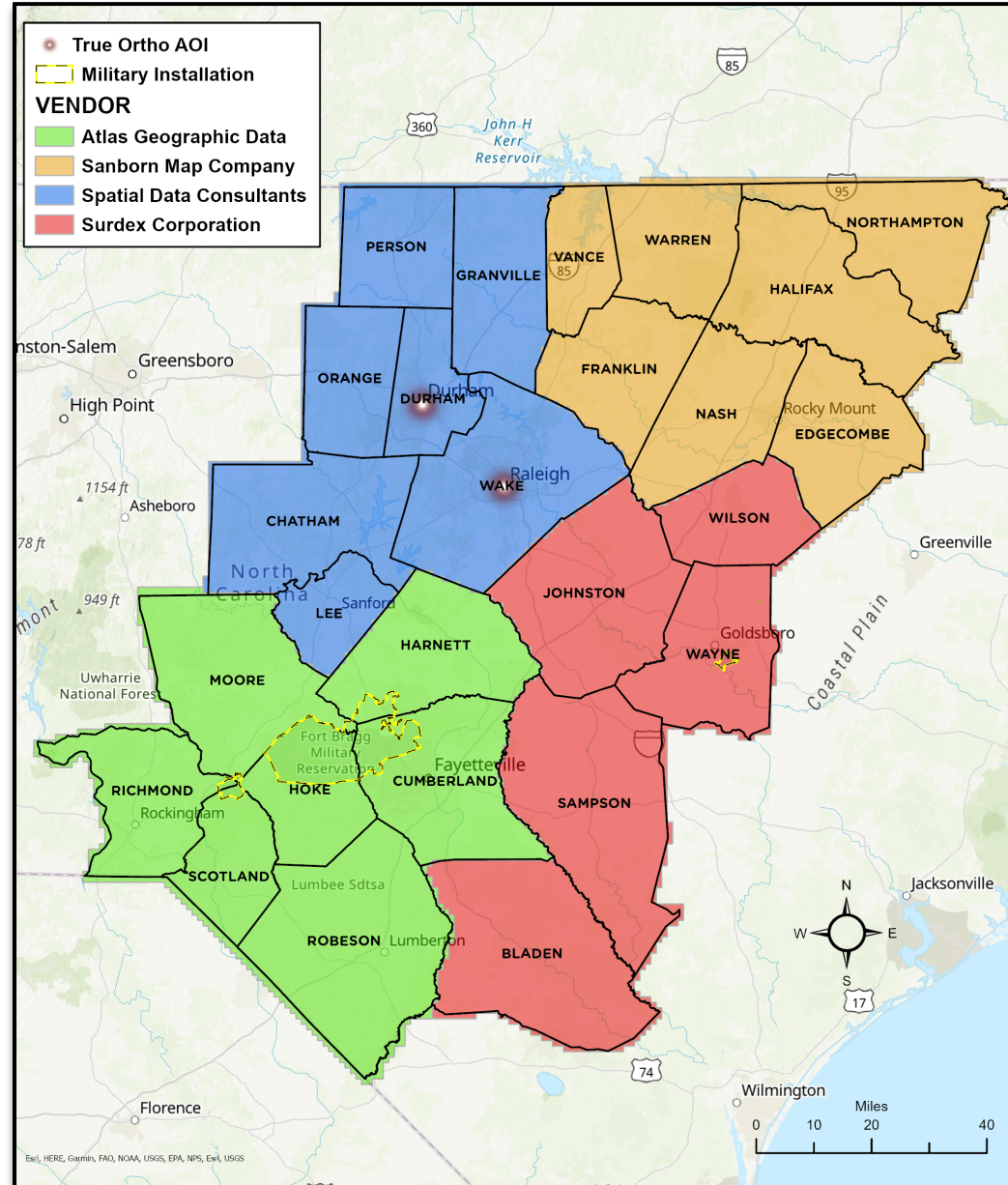
2021 Eastern Piedmont

- 26 counties
- 15,141 square miles
- 16,885 tiles (5,000' by 5,000')

- True Orthoimagery AOI:
 - Durham
 - Raleigh

- Coordination with Military Operations:
 - Fort Bragg
 - Camp Mackall
 - Seymour Johnson AFB

- Private Contractors pending contracting



EP21 Project Timeline

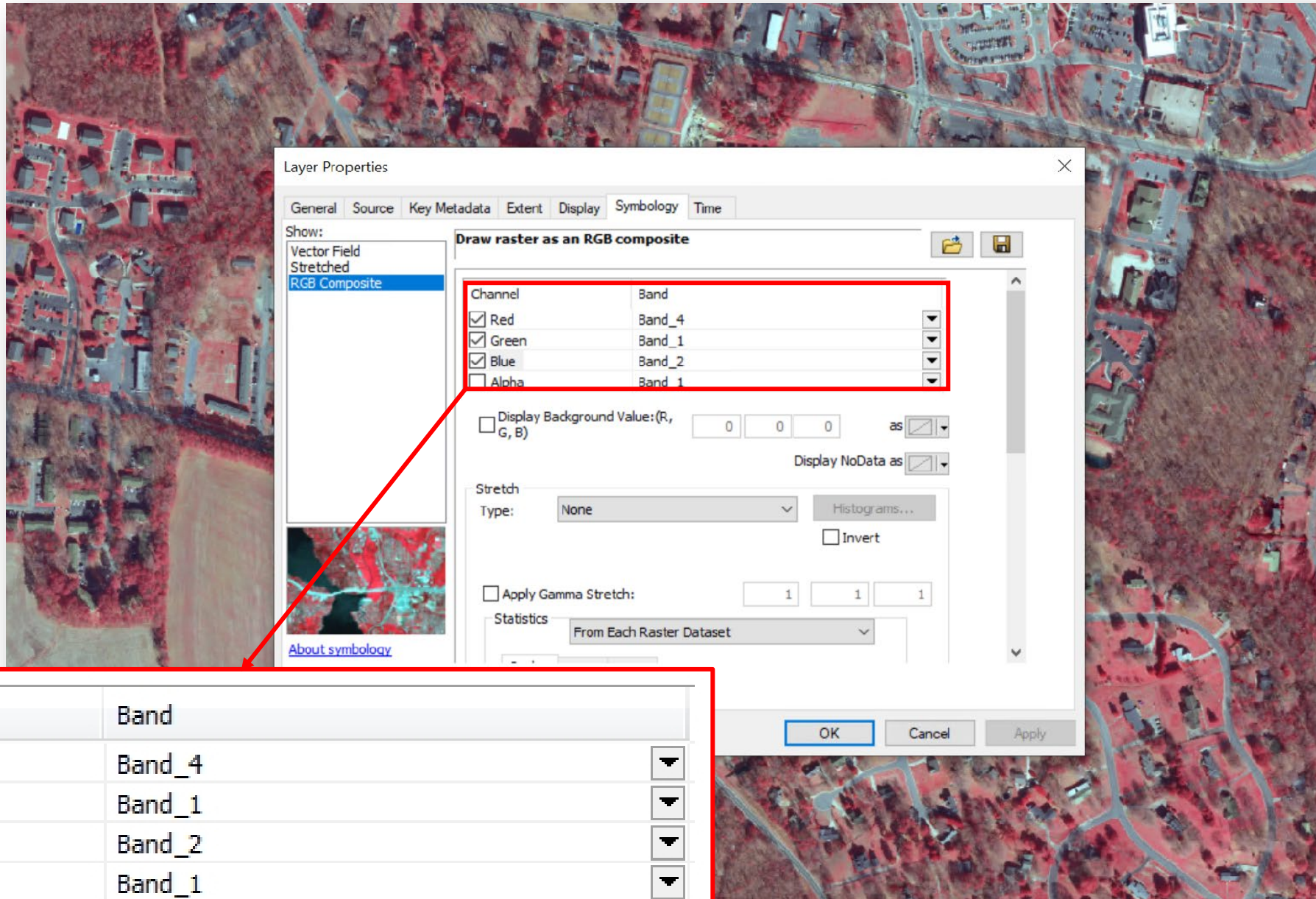


Orthoimagery Deliverables – 2020 and beyond

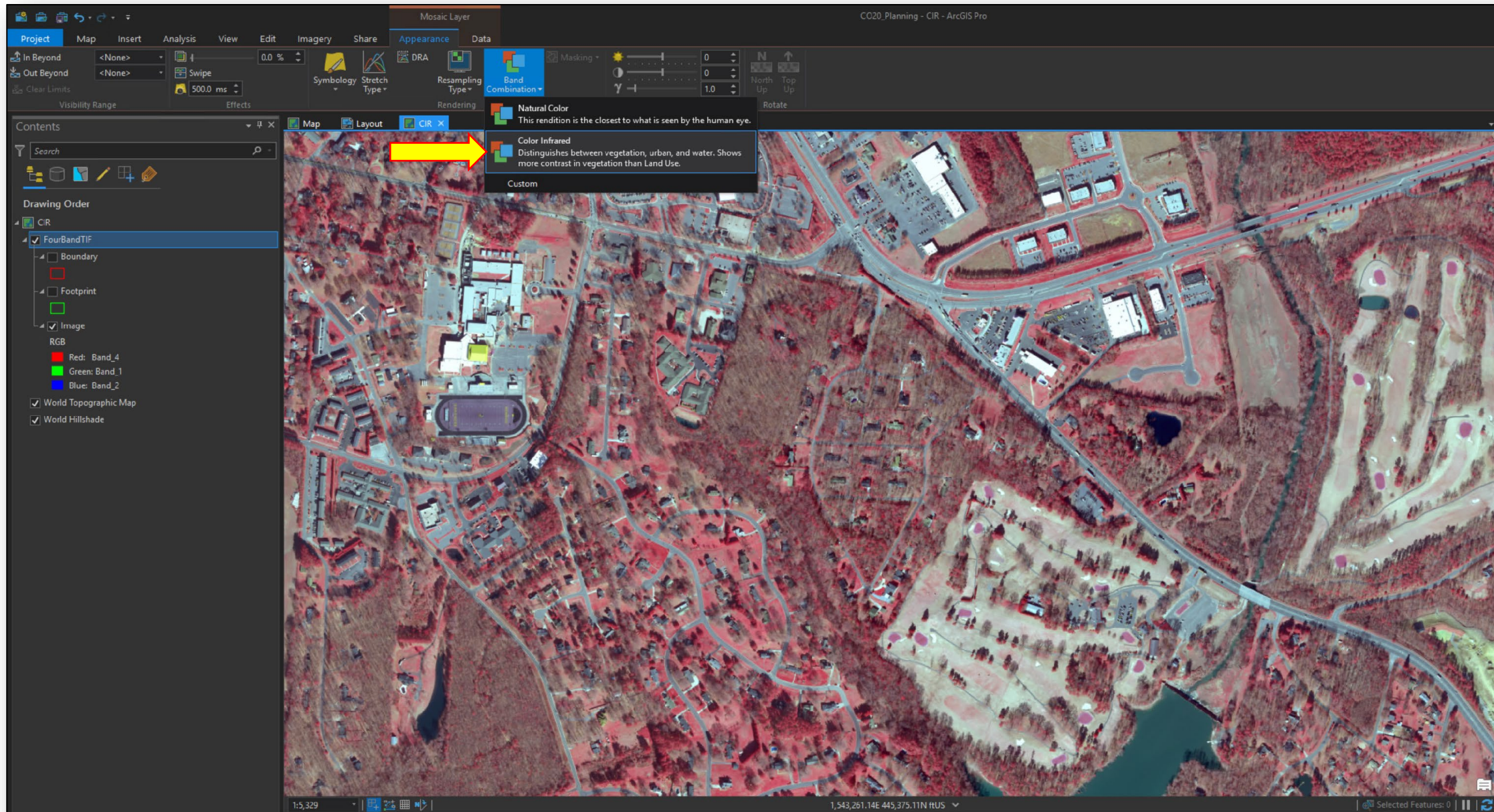
- Full Resolution TIFF Tiles (5000' by 5000') –
 - 400mb per tile
 - **4-Band (RGBIR)**
- 20:1 Compressed MrSID Tiles (5000' by 5000') –
 - Generation 4 MrSID
 - **4-Band RGBIR (2020 Project Area Only) AND**
 - **3-Band RGB (includes previous project images)**
- 50:1 Compressed MrSID Mosaic Single File (County 7-mile Rectangle)
 - **3-Band True-Color RGB AND**
 - **3-Band False-color IR**
- NC OneMap Image Services
 - Single year service – **4-Band RGBIR**
 - Orthoimagery_latest – 3-Band
 - Orthoimagery_all – TBD



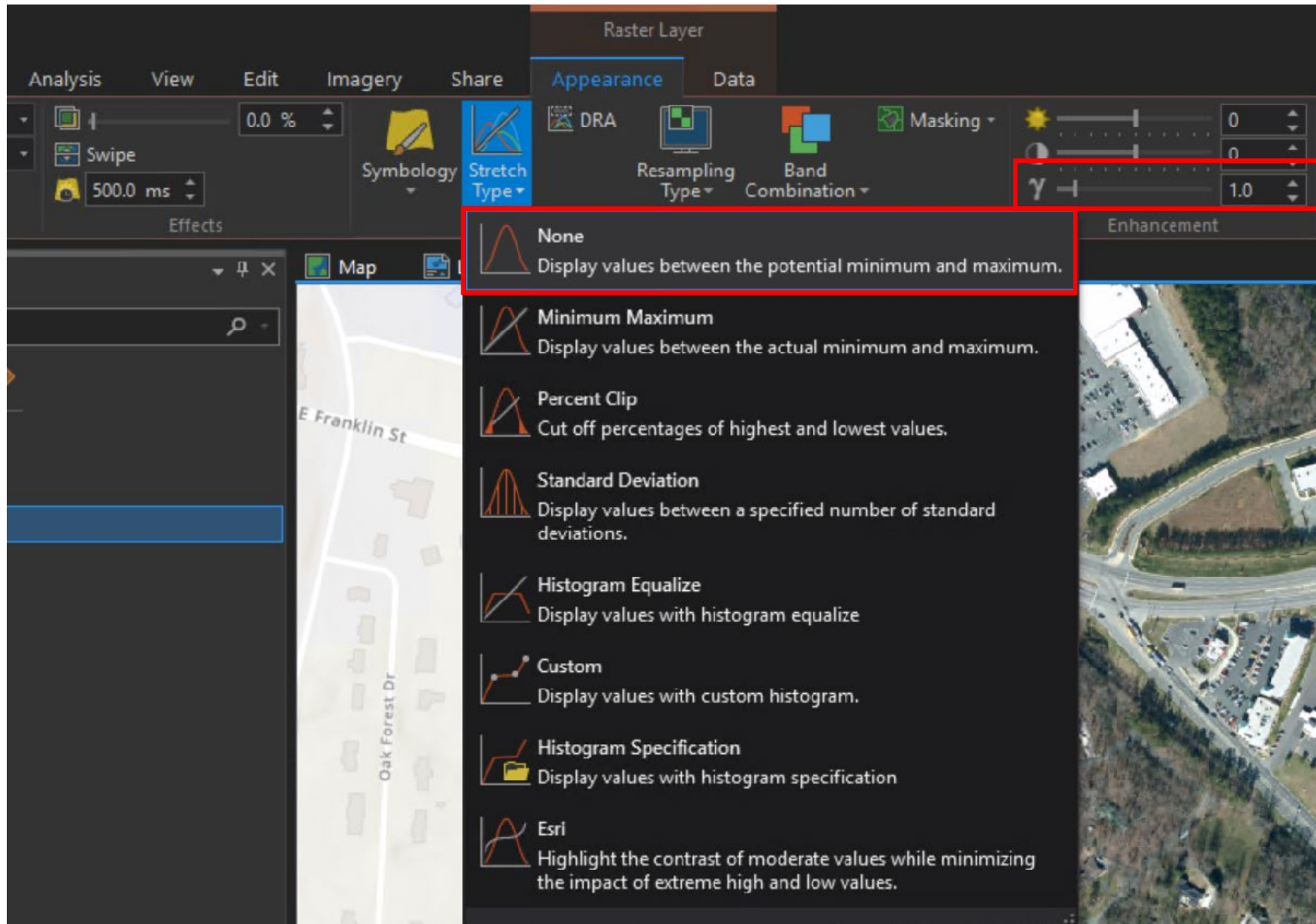
Using the 4th Band - ArcMap



Using the 4th Band – ArcGIS Pro



Using any bands – ArcGIS Pro



Using the 4th Band

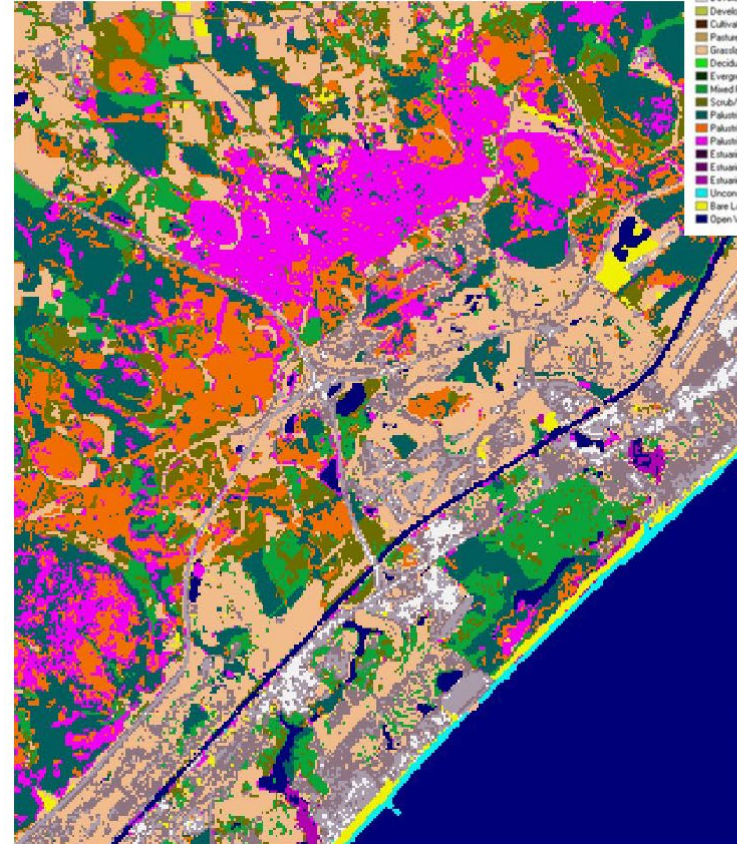
- Typical Color Infrared Imagery Uses:
 - **Impervious Surface Extraction**
 - Land Cover Classification
 - Vegetation Analysis
 - Tree Canopy Mapping
 - Soil Mapping



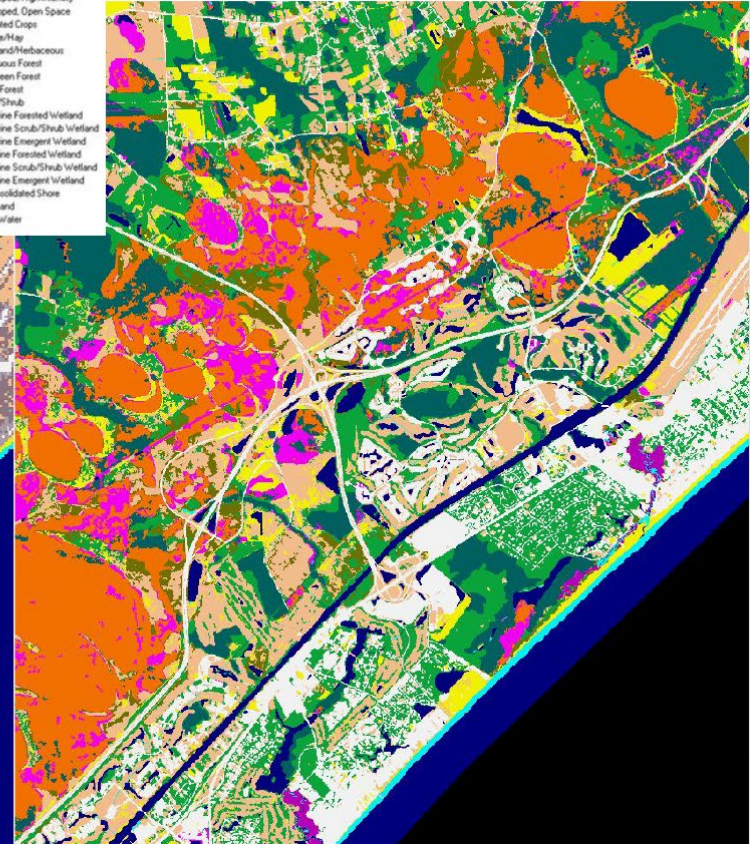
Using the 4th Band

- Typical Color Infrared Imagery Uses:
 - Impervious Surface Extraction
 - **Land Cover Classification**
 - Vegetation Analysis
 - Tree Canopy Mapping
 - Soil Mapping

30-meter



10-meter



Source: NOAA

Using the 4th Band

- Typical Color Infrared Imagery Uses:
 - Impervious Surface Extraction
 - Land Cover Classification
 - **Vegetation Analysis - NDVI**
 - Tree Canopy Mapping
 - Soil Mapping



Using the 4th Band

- Typical Color Infrared Imagery Uses:
 - Impervious Surface Extraction
 - Land Cover Classification
 - Vegetation Analysis
 - **Tree Canopy Mapping**
 - Soil Mapping

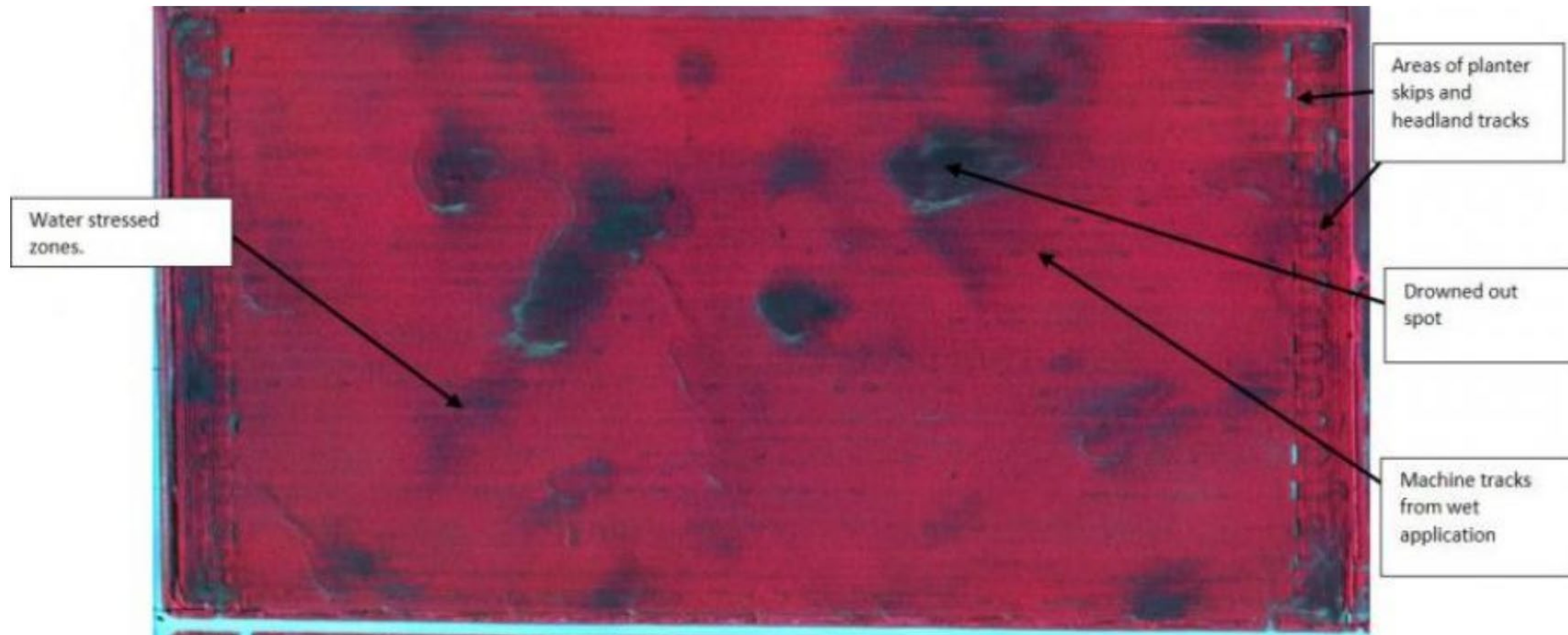


Source: ESRI

Using the 4th Band

- Typical Color Infrared Imagery Uses:
 - Impervious Surface Extraction
 - Land Cover Classification
 - Vegetation Analysis
 - Tree Canopy Mapping
 - **Soil Mapping**

Source: Iowa State University



Using the 4th Band

- Typical Color Infrared Imagery Uses:
 - Impervious Surface Extraction
 - Land Cover Classification
 - Vegetation Analysis
 - Tree Canopy Mapping
 - **Soil Mapping - NDVI**

Source: Iowa State University

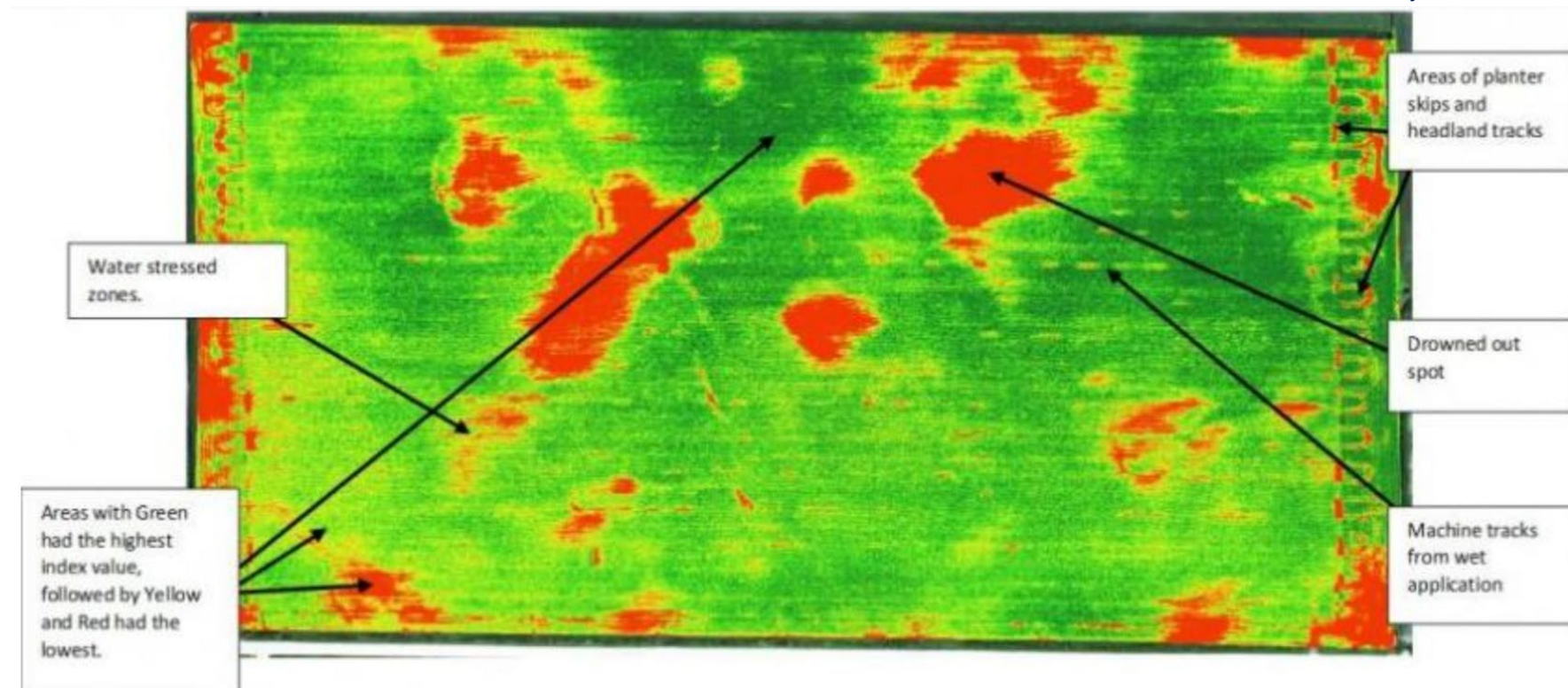


Image Classification and Object Detection

- Image Classification:
 - Supervised vs. Unsupervised
- Deep Learning
 - Can be used for Image Classification or Object Detection
- Most operations require Spatial Analyst or Image Analyst extension
- ESRI Training Courses
 - <https://www.esri.com/training/catalog/5ce42f4388c6106da2d53044/image-classification-using-arcgis/>



Questions?

Ben Shelton

919.754.6377

Ben.Shelton@nc.gov

www.nconemap.gov/

