



# NC OneMap Update

GICC

11.13.03





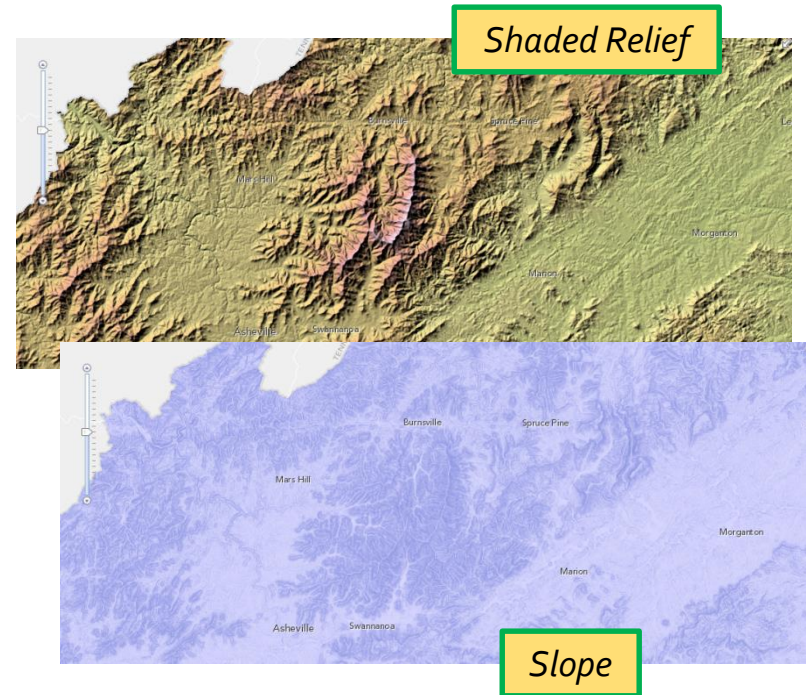
# New and Updated Data

Data Set	Custodian
Non-Public Schools	NC DOA/Non-Public Education
USGS Stream Gauges	US Geological Survey
ZIP Code Tabulation Areas	US Census Bureau
Biodiversity/Wildlife Habitat Assessment	NC DENR/Natural Heritage Program
WRC Gamelands	NC DENR/Wildlife Resources Commission
Elevation	NC Floodplain Mapping



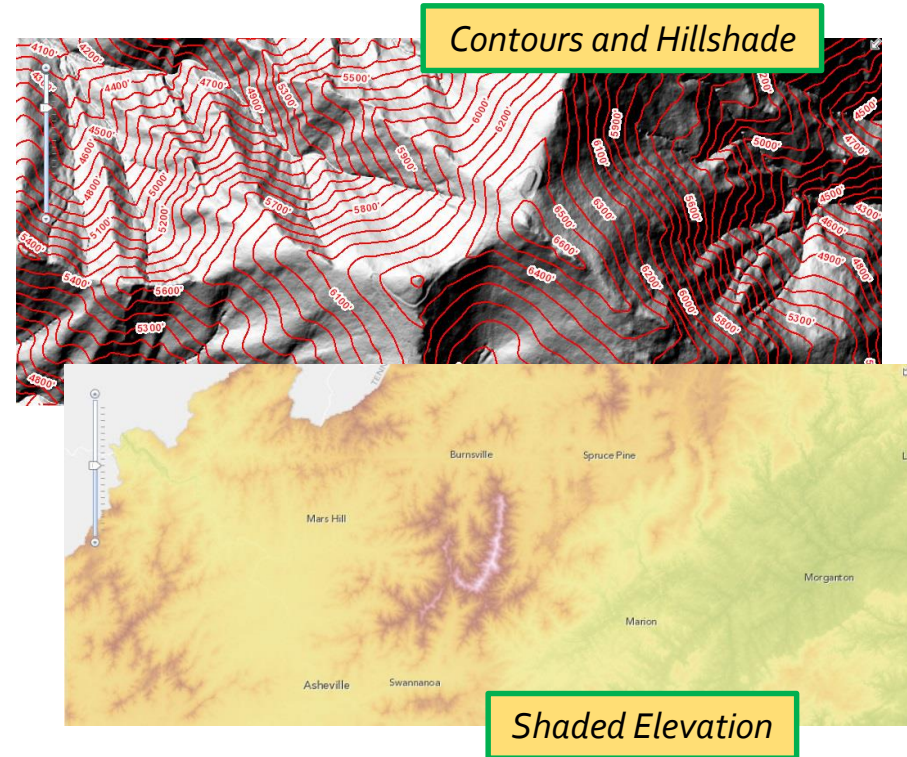
# Elevation Data and Services

- New resources
  - Elevation web services: slope, aspect, shaded relief, shaded elevation, hillshade, contours
- CGIA assuming on-line distribution responsibility from DOT-GIS Unit
  - Contour lines
  - DEMs (digital elevation models)



# Elevation Data and Services

- Uses
  - Road engineering
  - Watershed analysis
  - Viewshed analysis (line-of-sight)
  - Cut and fill
- Source
  - Statewide LiDAR data processed by NCDOT-GIS





# Questions?

Brett Spivey

NC OneMap Applications Programmer

[brett.spivey@nc.gov](mailto:brett.spivey@nc.gov)

David Giordano

NC OneMap Database Administrator

[david.giordano@nc.gov](mailto:david.giordano@nc.gov)

