

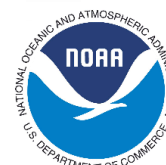
The North Carolina Coastal Atlas

Tom Allen and Rob Howard

Department of Geography, Planning & Environment
East Carolina University

NC GICC

May 11, 2016



Why a coastal web atlas for North Carolina?

- ❖ ICAN has a long definition that says what a coastal web atlas should provide:
 - “...collections of digital **maps** and **datasets** with supplementary tables, illustrations, and **information** that systematically **illustrate** the **coast**, oftentimes with cartographic and **decision support** tools, all of which are accessible via the **Internet**.”
- ❖ We describe our Atlas this way:
 - “The North Carolina Coastal Atlas is an online **mapping** and **investigation** system that provides both static and interactive **maps** and related **data** and **information** for **exploration, analysis** and **learning** about coastal issues and resources for **students, managers, scientists, teachers, and the interested public**.”

What are we doing?

A detailed nautical chart of a coastal region, likely the Falmouth area in Cornwall, UK. The map shows various islands and bays, including Money Island, Westmouth Bay, Eastmouth Bay, and the Falmouth Harbour. The text 'THE STRAITS' and 'FALMOUTH' is visible on the map. The map is overlaid with a semi-transparent white box containing text.

From these rather long descriptions we can state that coastal web atlases:

- ① Provide maps, data and information;
- ② Attempt to explain the coastal environment;
- ③ Help with decision-making and discovery;
- ④ Improve access via the Internet.

But, we should also say that a coastal web atlas is not the same thing to everybody!

“Personas” developed from a UX study of the NC Coastal Atlas



Data

Information

Decisions

Data Providers



FEMA

esri
ArcGIS Online



nc
ONE
map
Geospatial Portal

and others

Scholarly Databases

MENDELEY

Citizen Science and Observation

East Carolina UNIVERSITY
Joyner Library

The North Carolina Coastal Atlas

ArcGIS Server
geoprocessing tools, WMS, KML/KMZ, data download.

Web Services
geo-located bibliography, data catalog, social media integration, APIs.

Real-Time Information

Desktop GIS
Managers, researchers, and GIS professionals

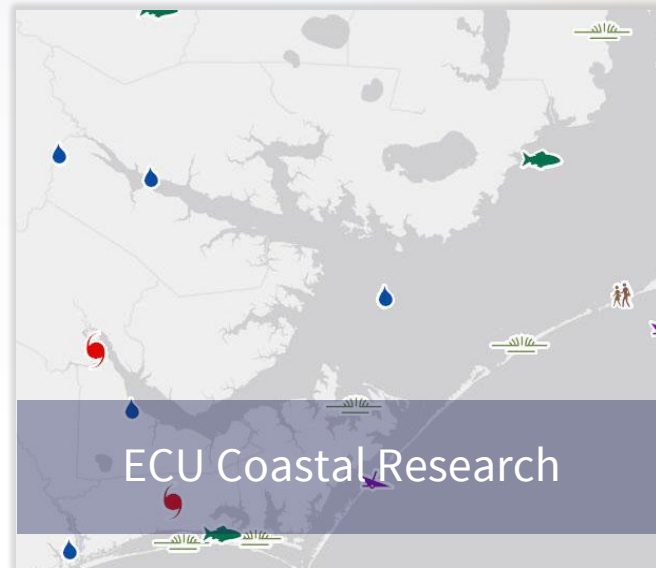
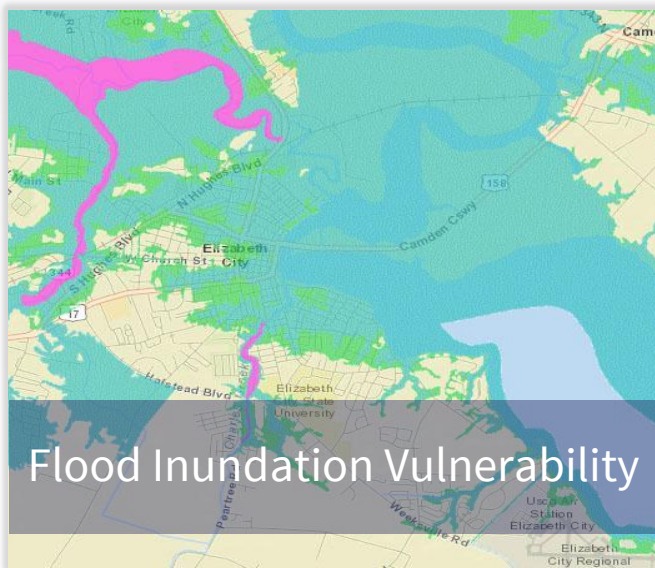
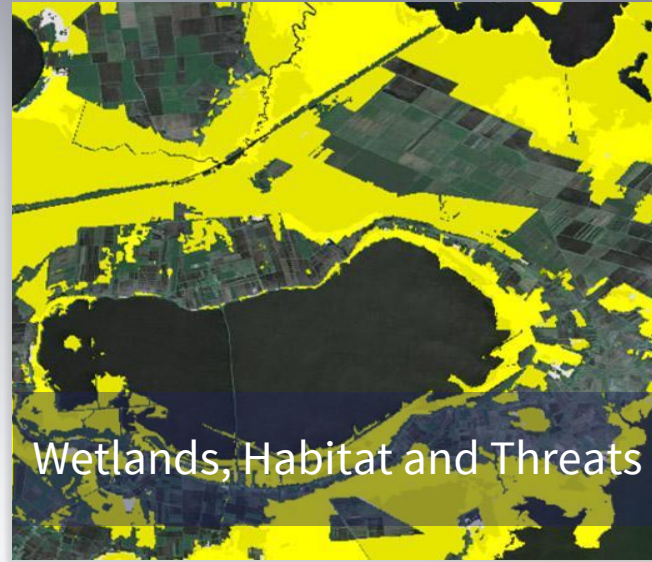
Mobile
on-the-go information access and submission

Visualizers
property owners, educators and the interested public

Thematic Maps

The background is a map of the Beaufort area, including the Beaufort River, the Beaufort Islands, and the Beaufort Strait. A prominent orange-shaded area follows the coastline and extends inland, representing a thematic layer such as flood inundation vulnerability or wetlands. The map includes labels for 'BEAUFORT', 'THE STRAITS', 'ALASKA ISLAND', and 'ALASKA BAY'.

- ❖ Collection of GIS layers (data) that follow a certain theme or topic.
- ❖ Many existing thematic maps already on the Atlas.
 - Estuarine and Ocean Shorelines
 - Wetlands, Habitat and Threats
 - Flood Inundation Vulnerability
 - Dasymetric Population Mapping
 - others
- ❖ Story maps can convey information by stepping the user through a sequential narrative.



Data Catalog

Add Data to Map

Filter by Type: **All** Basemap Non-Basemap

Sort by: **Relevance** Alphabetical



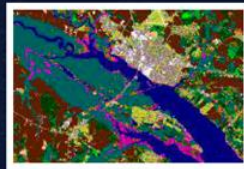
Airports, Bridges and Hurricane Evacuation Routes



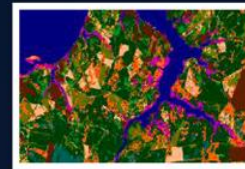
Animal Operation Permits



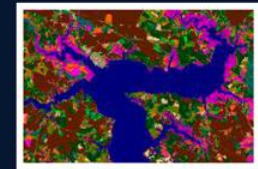
Beach and Coastal Waterfront Access



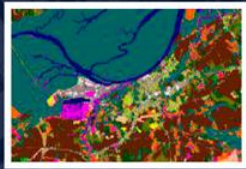
Coastal Change Analysis Program (C-CAP) Land Cover (1996)



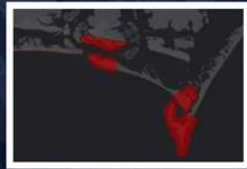
Coastal Change Analysis Program (C-CAP) Land Cover (2001)



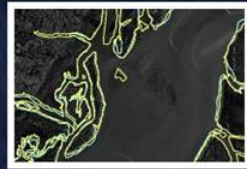
Coastal Change Analysis Program (C-CAP) Land Cover (2006)



Coastal Change Analysis Program (C-CAP) Land Cover (2010)



Critical Habitat for Threatened & Endangered Species



Dare County Historic Estuarine Shoreline (1949;1970)



Dark Gray Canvas



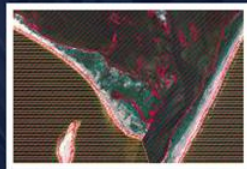
Dasymetric Population Estimates



ECU Coastal Research Projects



Environmental Sensitivity Index (ESI)



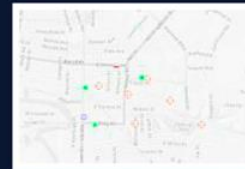
Environmental Sensitivity Index (ESI) Threatened and Endangered Species



Estuarine Shoreline and Structures (2009)



Federal and State Land Ownership



Fire and Law Enforcement Locations

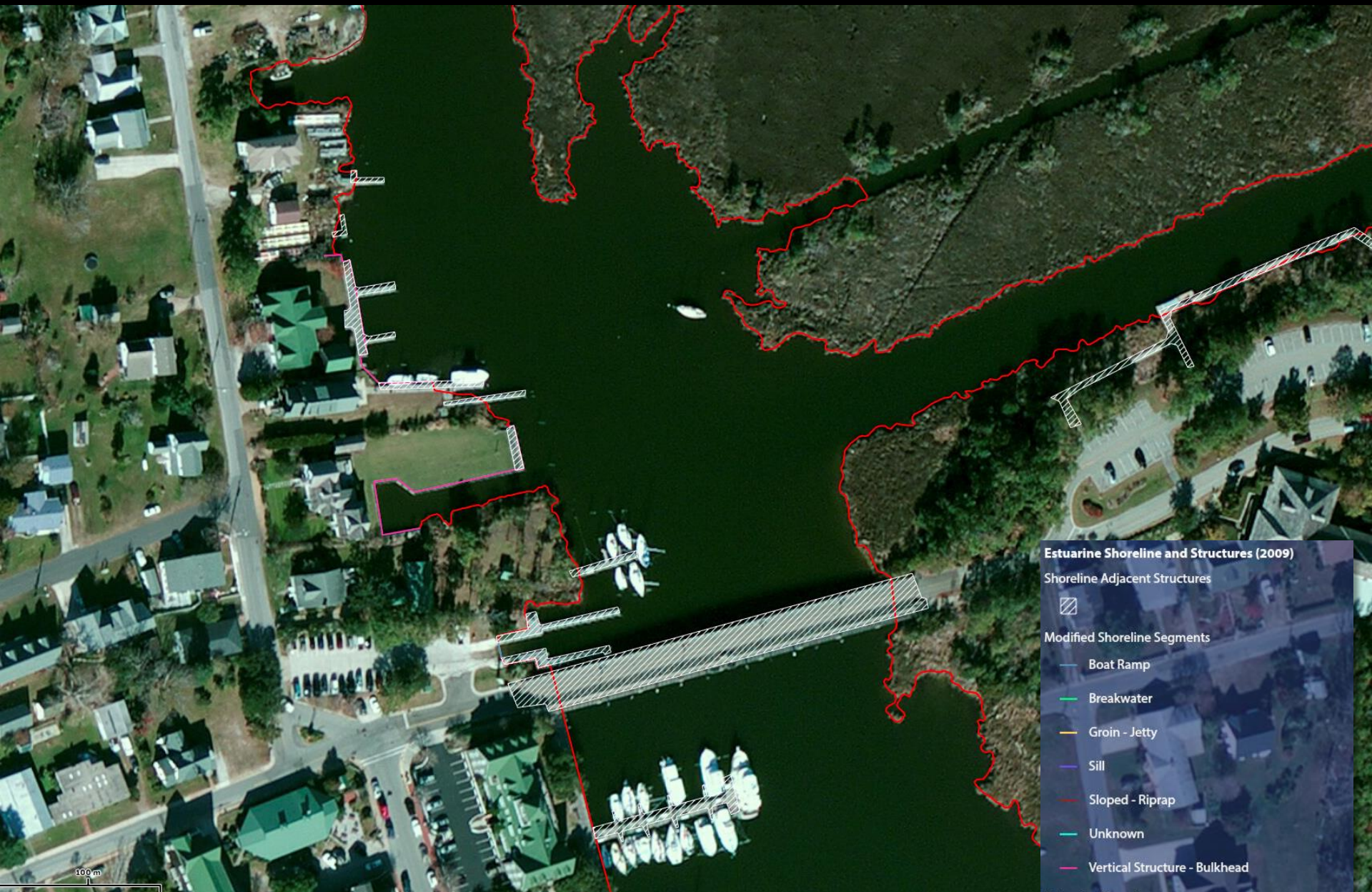


Flood Zones (FRIS)

Done


NC Division of Coastal Management Estuarine Shoreline



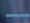
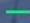

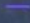

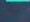


Estuarine Shoreline and Structures (2009)


Shoreline Adjacent Structures

-  Shoreline Adjacent Structures

Modified Shoreline Segments

-  Boat Ramp
-  Breakwater
-  Groin - Jetty
-  Sill
-  Sloped - Riprap
-  Unknown
-  Vertical Structure - Bulkhead

Estuarine Shoreline

-  Estuarine Shoreline

100m

Estuarine Shoreline and Structures (2009)

Shoreline Adjacent Structures



Modified Shoreline Segments

Boat Ramp

Breakwater

Groin - Jetty

Sill

Sloped - Riprap

Unknown

Vertical Structure - Bulkhead

Estuarine Shoreline

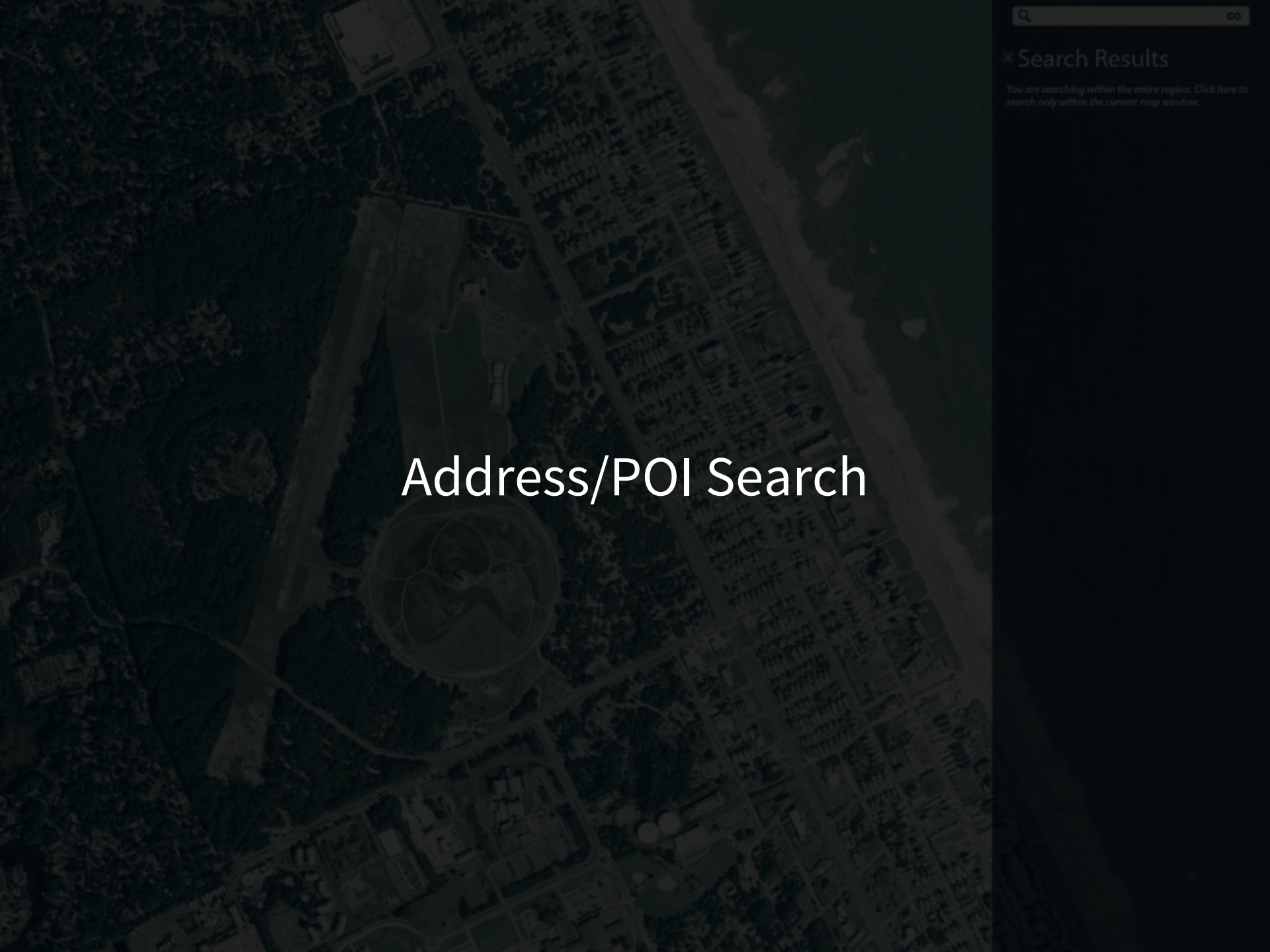


100 m

* Search Results

You are searching within the entire region. Click here to search only within the current map window.

Address/POI Search



An aerial satellite image of a coastline, likely a bay or inlet. A vertical red line runs through the center of the image, representing a 'Swipe Tool' path. The land on the left is textured and brownish, while the water on the right is dark. The red line starts at the top and ends at the bottom, passing through the narrowest part of the inlet.

Swipe Tool

2010



2012

Spotlight Tool

2012

2010



Legend

Map Contents

- World Imagery
- Statewide Orthoimagery (2010)
- Statewide Orthoimagery (2012)
- Estuarine Shoreline and Structures (2009)
- Bibliography
- Drawings and Annotations
- Symbol Markers



Distance Measurement

Flexible Map Output

- ❖ Export map contents to common file formats.
 - PDF
 - JPEG, PNG
- ❖ Settings for page size and orientation.
- ❖ Customize map title.
- ❖ Customize output resolution.



Export Printable Copy

Map Title:

Enter the title of this map as it should be printed.

Page Size and Orientation:

Select the page size and orientation from the list of options.

Output Format:

Select the output format from the list of options.

Output Resolution:

Select the output resolution from the list of options.

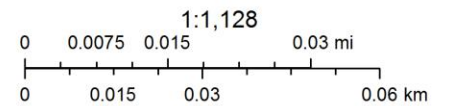
[Export](#) [Cancel](#)

Shoreline Erosion from 2010 to 2012



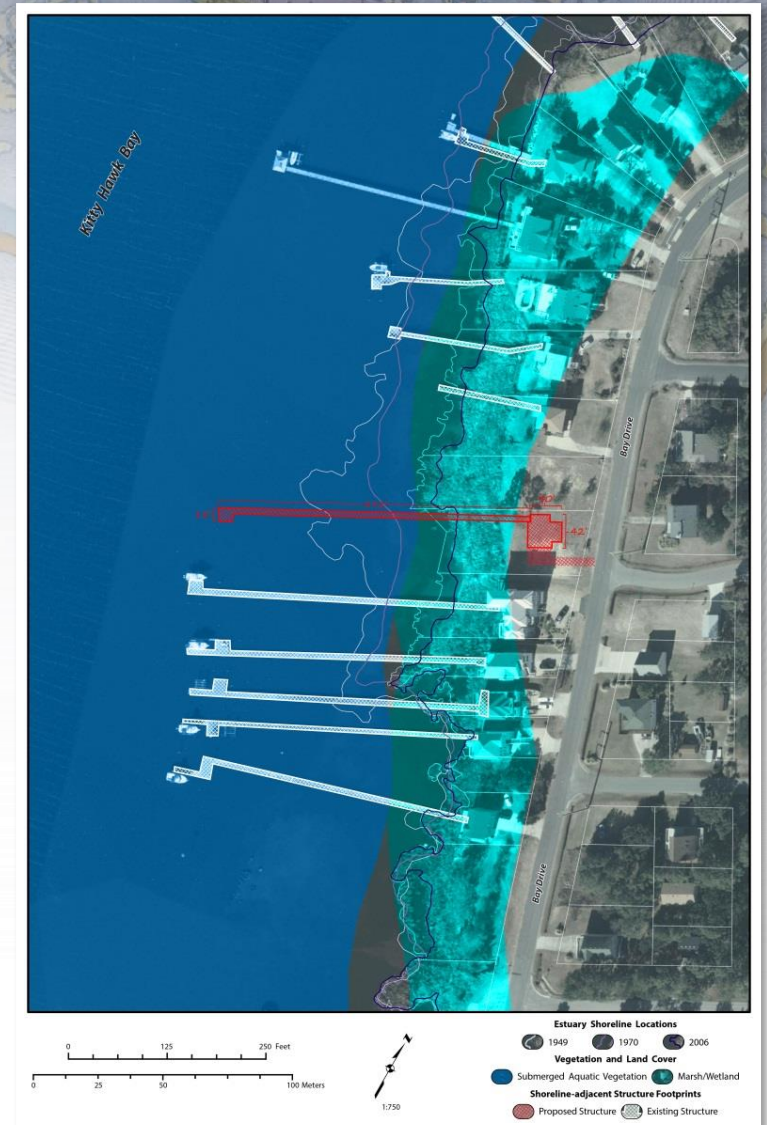
April 16, 2015

- | | | |
|------------------------------------|---------------|-------------------------------|
| Shoreline Adjacent Structures | Breakwater | Sloped - Riprap |
| Modified Shoreline Segments | Groin - Jetty | Unknown |
| Boat Ramp | Sill | Vertical Structure - Bulkhead |



Tools

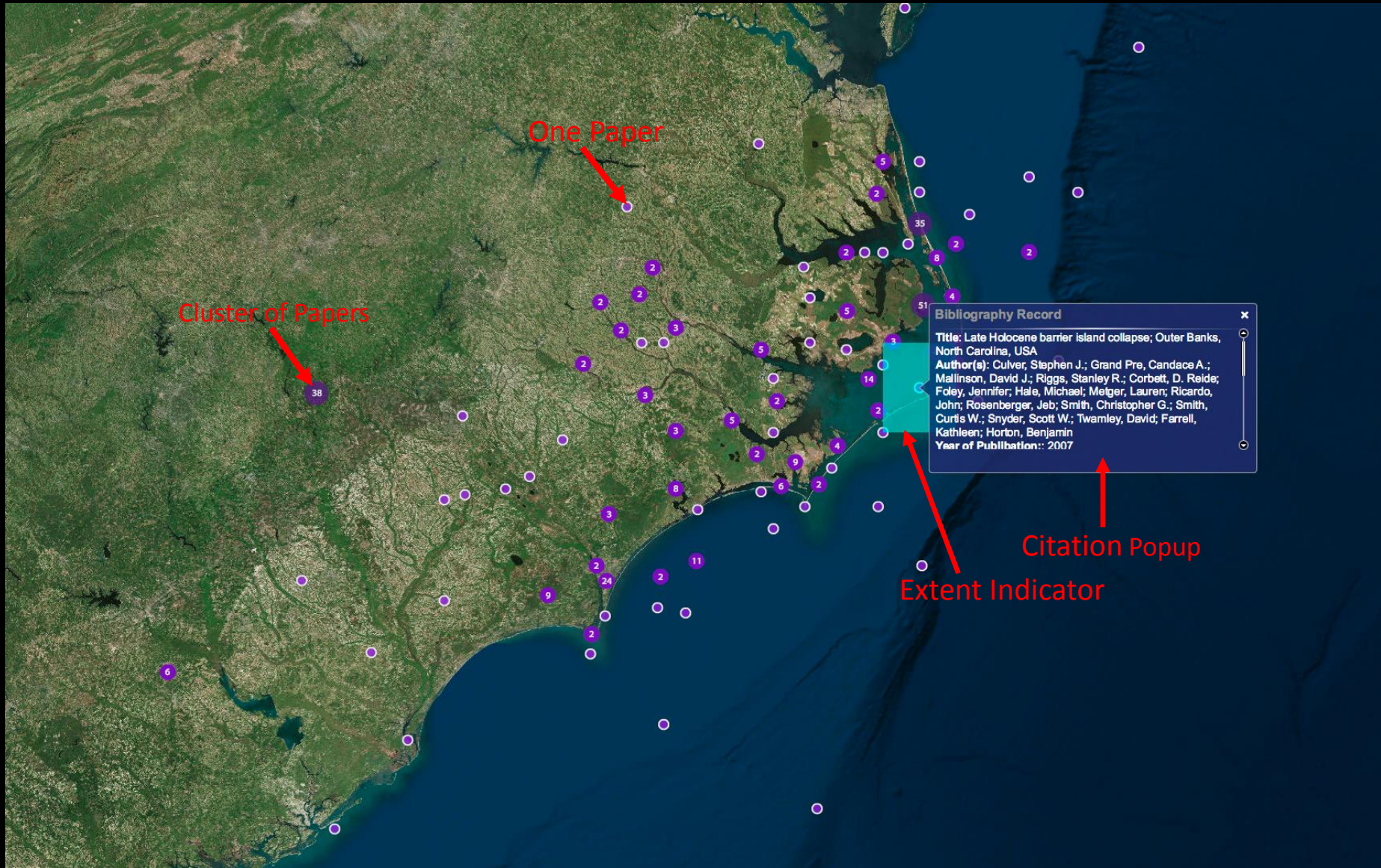
- ❖ Coastal planning and permitting.
 - *Do you see what I see?*
- ❖ Markup and review: sketch and annotation tools.
- ❖ Map sharing for accurate and efficient decisions.
 - Coming this year!
 - Share via social media or email.
 - Per-map comments.



Geotagged Bibliography



- ❖ Provides a curated list of documents
 - journal articles
 - technical reports
 - books
 - theses and dissertations
 - and other works
- ❖ Allows these documents to be discovered using both geospatial and topical search.
- ❖ Link to full document text, if available.



Socially Connected?

Social media and local liaisons are key to attracting and maintaining contact between people, information, places.

❖ Atlas web visitors (since July 2014)

- 4,200+ users (>900 returning)
- 14,000 individual page views.
- More than 500 users per month (average)

❖ Twitter, Facebook (launched 10-15-2013)

 Like us at facebook.com/NCCoastalAtlas
~250 likes (*as of May, 2016*)

 Follow us @nccoastalatl
~360 followers (*as of May, 2016*)

What's Next?

Atlas 2.0 (estimated for fall of this year)

- ① Guided tour better ease of use.
- ② Support tablets and smartphones
- ③ Editing and sharing maps and collaborating with friends and colleagues.
- ④ Share maps by sending a link via email or social media.
- ⑤ Integration with ArcGIS Online to allow adding map layers from organizational accounts.
- ⑥ Coastal Permitting App Tool

Redesign for Contextual User Interface

- ❖ Guided tour based on user type.
- ❖ Walkthrough video/interactive help.
- ❖ Prioritization of UI elements based on most commonly used features.



The screenshot shows a web interface for the Coastal Atlas. At the top, it says "Help us customize your experience!" and "Coastal Atlas Are you...". Below this are four icons representing different user types: a woman (Researcher), a man in a suit (Planner), a woman with a graduation cap (Educator), and a person with a magnifying glass (Expert). Each icon has a label below it: "A Coastal Researcher", "A Coastal Planner", "A Coastal Educator", and "A GIS Expert". Below the icons, there is a navigation bar with "Home", "Maps", "Bib", "t Us", and "Help". At the bottom, there is a text input field for a newsletter sign-up, with a left arrow and a right arrow next to it. The background of the page is a map of a coastal area.

Help us customize your experience!
Coastal Atlas Are you...

Home Maps Bib t Us Help

(click one)

Join our newsletter: _____

(click here to make this go away)

Charles Kuralt Trail



Charles Kuralt Trail

[View in Map](#) [Map Services](#)

The Charles Kuralt Trail is in a region of the mid-Atlantic coastal plains of Virginia and North Carolina. This region is more commonly known as the Roanoke, Tar, Neuse, Cape Fear Ecosystem, all of which are rivers that flow into the Albemarle, Currituck, and Pamlico Sounds. There is no set route that one should take to enjoy the Kuralt Trail. However, there is a 940 mile network of North Carolinian and Virginian highways and interstates that will take you through the eastern coastal portion of the state to the 12 locations that make up the interest sites of the Kuralt Trail.

There is 12 National Wildlife Refuges and one National Fish Hatchery that makes up the Kuralt. Each location provides a chance for one to experience the unique wildlife of the National Wildlife Refuge. Each location provides recreational activities for a visitor to partake in. Many of the Refuges provide areas for camping, hunting, hiking, and fishing, but each location varies on the activities in which they offer to the

Creator Name(s)

N.C. Coastal Atlas

Provider Name(s)

N.C. Coastal Atlas

Categories

Recreation and Tourism

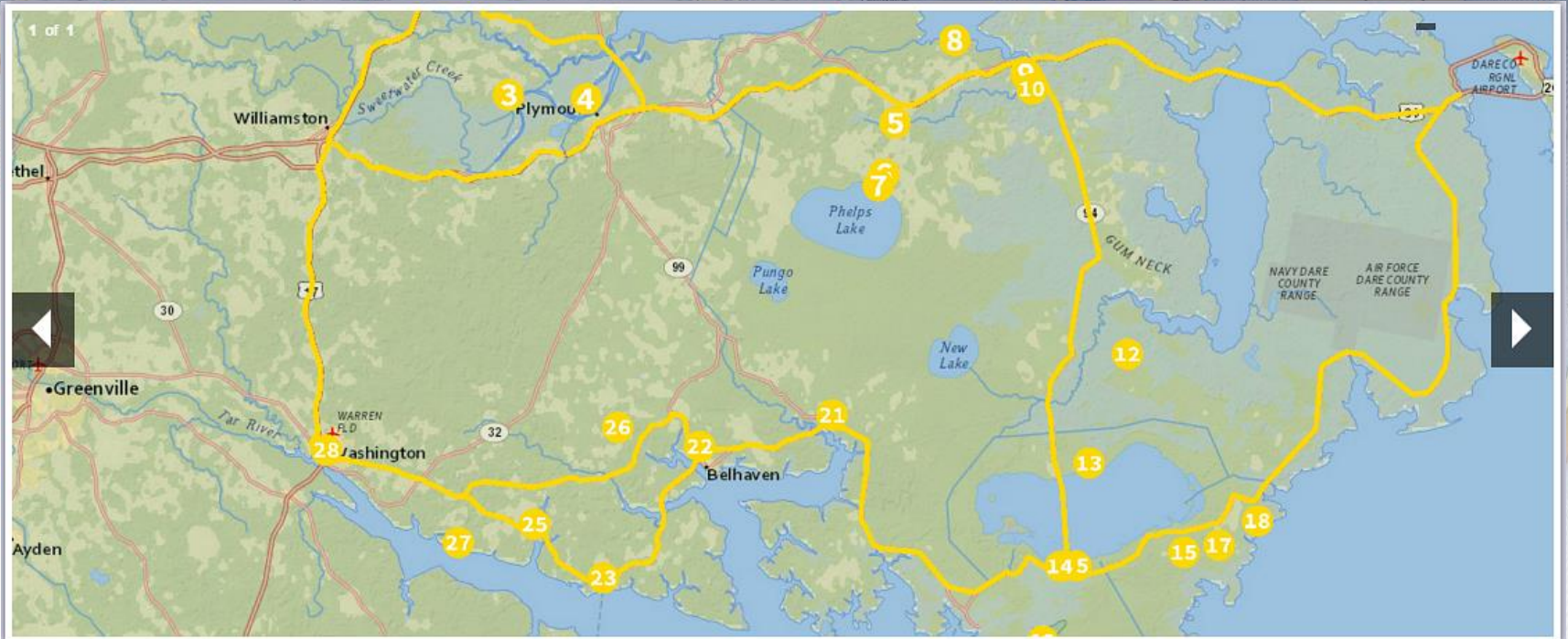
Charles Kuralt Trail POIs

- 1 Back Bay National Wildlife Refuge
- 2 Mackay Island National Wildlife Refuge
- 3 Great Dismal Swamp National Wildlife Refuge
- 4 Currituck National Wildlife Refuge
- 5 Edenton National Fish Hatchery
- 6 Roanoke River National Wildlife Refuge
- 7 Pocosin Lakes National Wildlife Refuge
- 8 Alligator River National Wildlife Refuge
- 9 Pea Island National Wildlife Refuge
- 10 Mattamuskeet National Wildlife Refuge
- 11 Swanquater National Wildlife Refuge
- 12 Cedar Island National Wildlife Refuge

Charles Kuralt Trail



Sounds Discovery Trail



The Sounds Discovery Trail

[View in Map](#)

[Map Services](#)

The Sounds Discovery Trail will take you on a tour to 28 different locations throughout Hyde, Tyrrell, Washington, Beaufort, and Bertie counties in eastern North Carolina. It is not required to visit each location in numerical order however, it is designed to where one can travel from site to site with ease in a loop fashion on 320 miles of North Carolina highways.

While on the trail, one will have a chance to stop at several houses that are protected and considered nationally registered historic locations, visit unique wildlife in several National Wildlife Refuges, and several small historic towns.

Creator Name(s)

N.C. Coastal Atlas

Provider Name(s)

N.C. Coastal Atlas

Categories

Recreation and Tourism

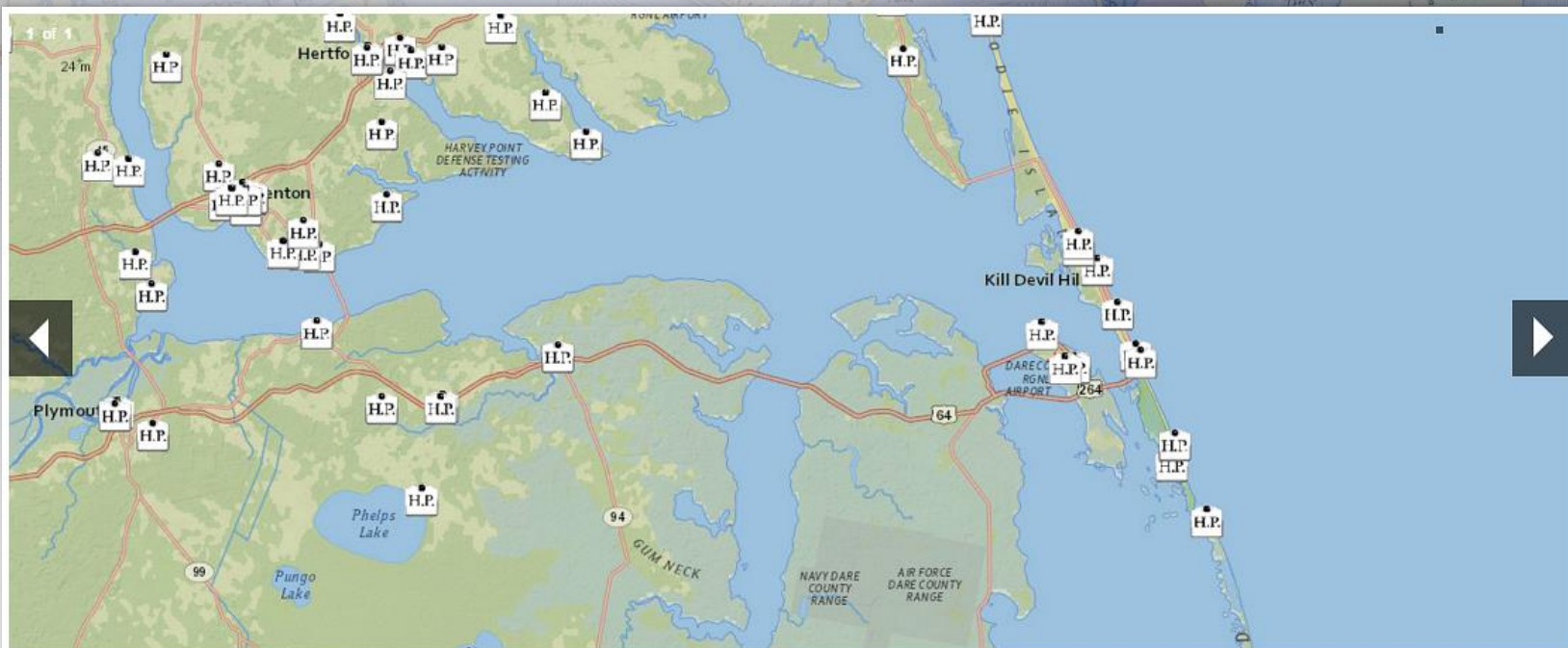
The Sounds Discovery Trail

Sounds Discovery POIs

- 1 Hope Plantation
- 2 Windsor
- 3 Sans Succi Ferry
- 4 Plymouth
- 5 Davenport House
- 6 Somerset Place
- 7 Pettigrew State Park
- 8 The Eastern 4-H Environmental Education Cor
- 9 Columbia
- 10 Pocosin Lakes National Wildlife Refuge
- 11 Palmetto-Peartree Preserve
- 12 Intercoastal Waterway
- 13 Fairfield
- 14 Mattamuskeet National Wildlife Refuge
- 15 Mattamuskeet Lodge
- 15 Octagon House
- 17 Lake Landing Historic District
- 18 Villagae of Engelhard
- 19 Village of Swan Quarter
- 20 Ocracoke
- 21 Ponzer Area
- 22 Belhaven Area
- 23 Bayview Aurira Ferry
- 24 Aurora Fossil Museum
- 25 Historic Bath
- 26 Terra Ceia Area



National Register of Historic Places



National Register of Historic Places

[View in Map](#) [Map Services](#)

The National Register of Historic Places is the official list of the Nation's historic places worthy of preservation. Authorized by the National Historic Preservation Act of 1966, the National Park Service's National Register of Historic Places is part of a national program to coordinate and support public and private efforts to identify, evaluate, and protect America's historic and archeological resources.

This map layer contains point markers for all NRHP sites in counties within the Coastal Plain physiographic province of North Carolina. This is a total of 649 places that have been deemed worthy of preservation by the National Register.

Creator Name(s)

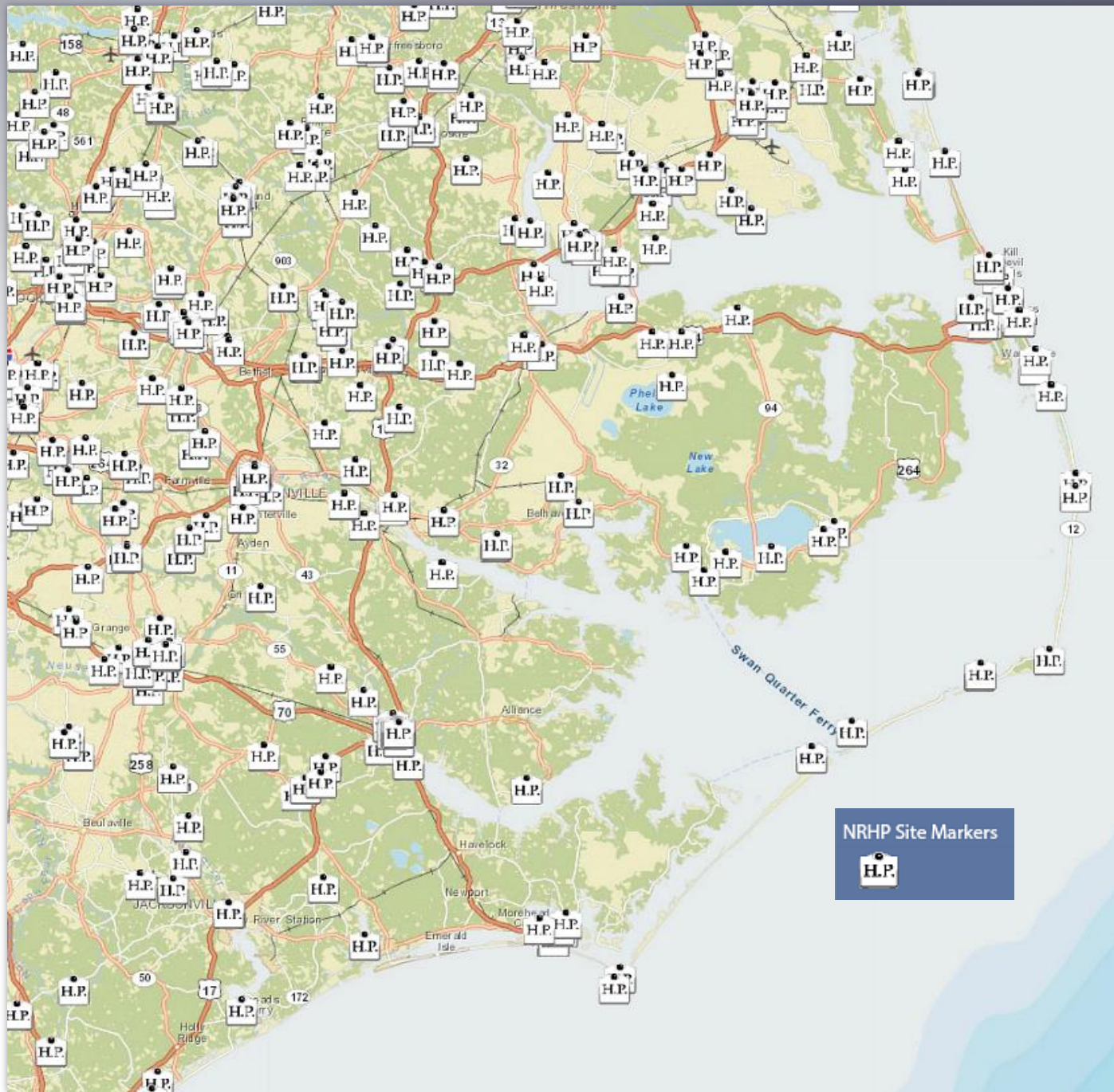
National Register of Historic Places

Provider Name(s)

N.C. Coastal Atlas

Categories

Historical



Paddle Trails and Access

North Carolina
Coastal Atlas

Home Maps Data Catalog Bibliography About Us Contact Us Blog

Data Catalog



Paddle Trails and Access

[View in Map](#) [Map Services](#)

Kayak and Canoe Paddle Trails and Access

This map layer features an assimilation of kayak and canoe paddle trails and access locations for launch/take-out. Trails and sites have been compiled primarily for the Albemarle-Pamlico region using NC Paddle Trails Association maps, NC OneMap Recreation layers, and maps from the Mid-East RC&D, Pamlico County Rural Development Panel, and Pam Malec's (2001) *Guide to Sea Kayaking North Carolina*. (Globe Pequot Press, Guilford, CT), 179pp.

Creator Name(s)

N.C. Coastal Atlas
N.C. Paddle Trails Association
Mid-East RC&D
N.C. Center for Geographic Information and Analysis

Provider Name(s)

N.C. Coastal Atlas
NC OneMap

❖ NC Paddle Trails Association maps.

❖ NC OneMap Recreation layers.

❖ Mid-East RC&D.

❖ Pamlico Co. Rural Development Panel.

❖ Pam Malec's (2001) *Guide to Sea Kayaking North Carolina*.



New Scuppernong and Columbia Trails and Access



Fishing and Boating



Coastal, Joint, and Inland Waters

[View in Map](#) [Map Services](#)

Boundaries of Coastal, Joint and Inland Waters

Boundaries between coastal-joint and inland waters are provided in a tiled map service and GIS layers maintained by the NC Division of Marine Fisheries.

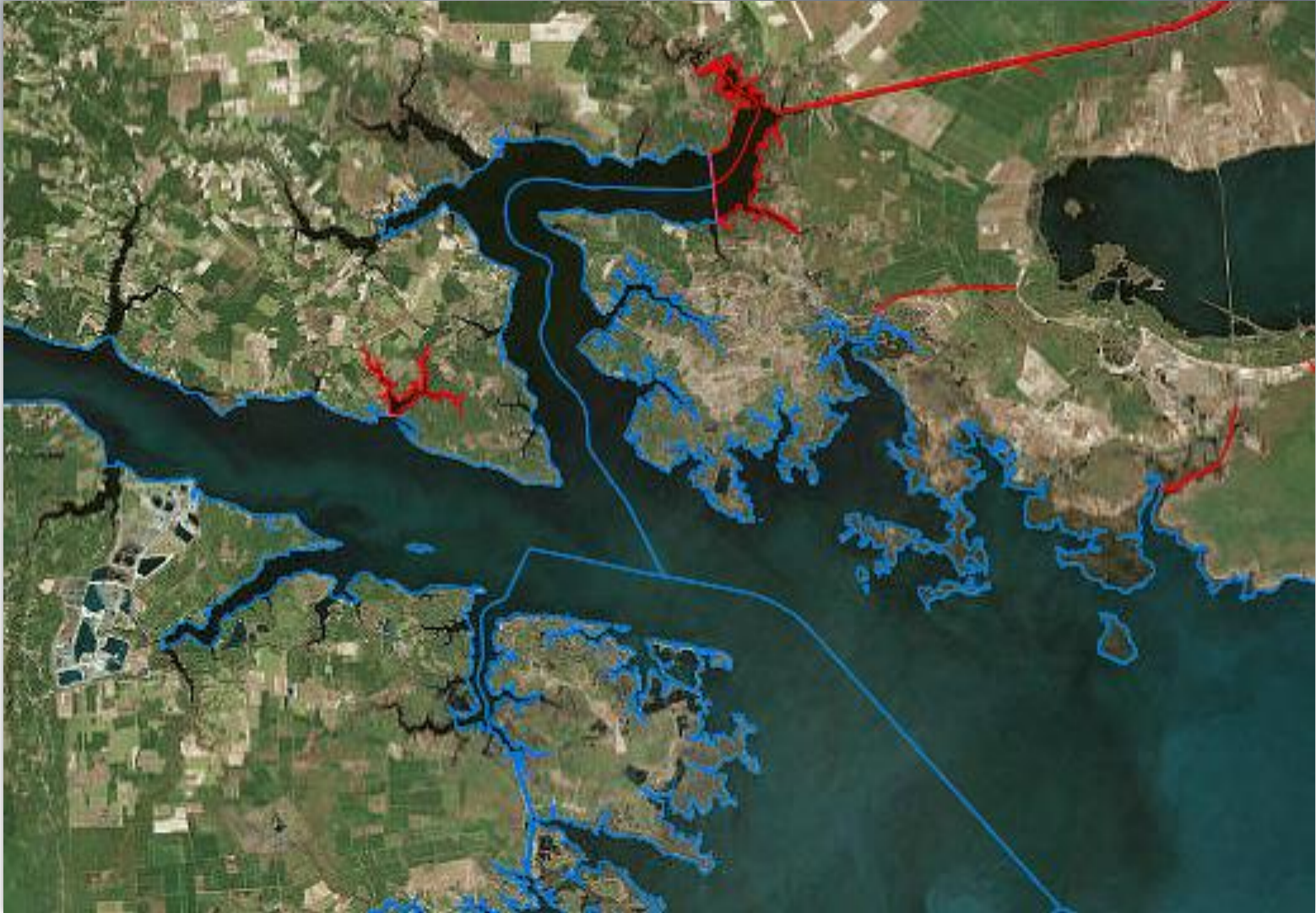
For the purposes of recreational fishing with hook and line, these boundaries define the pertinent required fishing license.

Creator Name(s)

N.C. Division of Marine Fisheries

Provider Name(s)

Esri



Boat Accesses and Marinas



NC Boating Access Areas

A compilation of WRC owned/maintained access areas as well as other public and free ramps developed or maintained in partnership with the agency. Further details on the source of this layer (also served by NC OneMap) can be found [here](#).

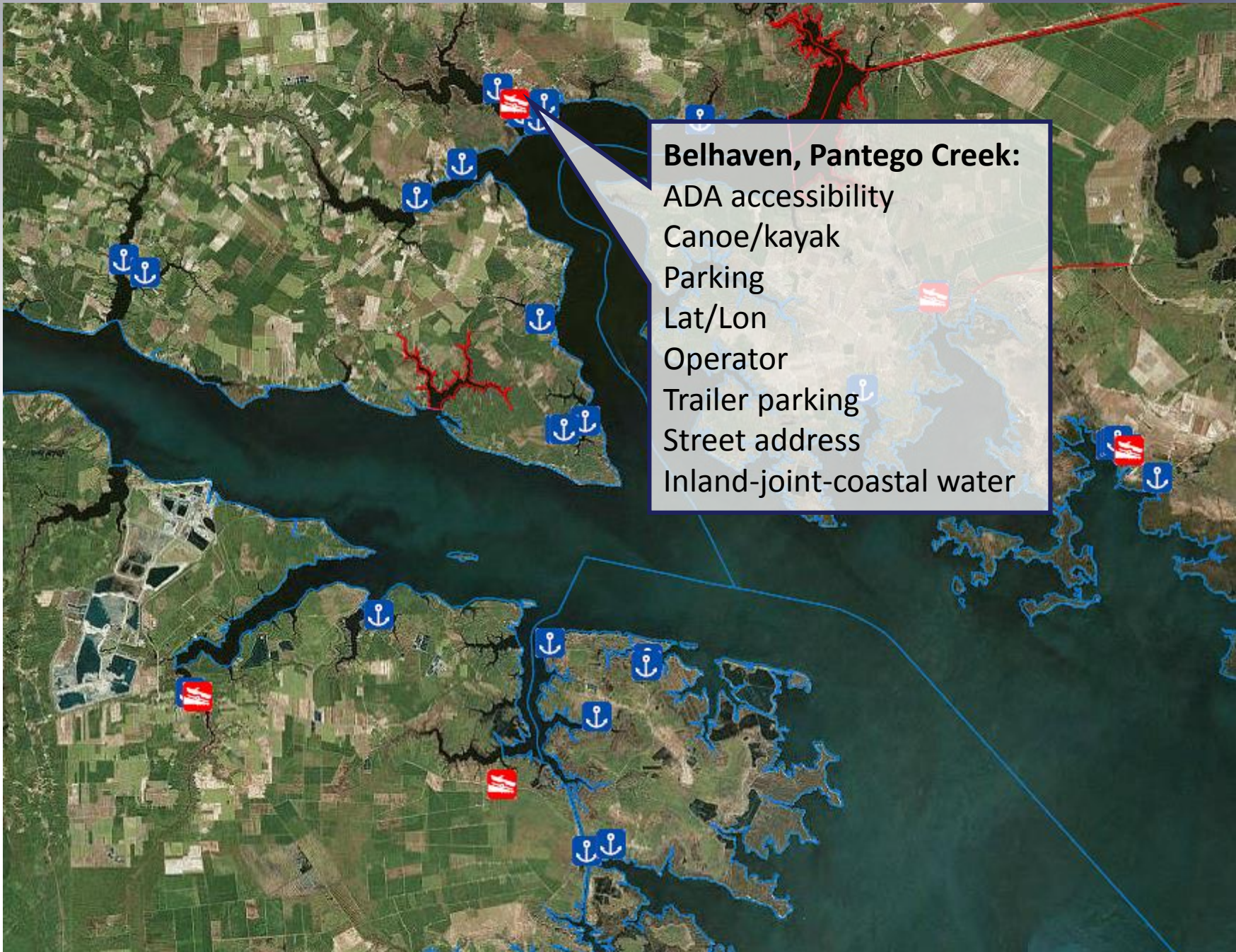
- 130+ locations



Marinas

This layer was built upon an inventory by the NOAA Environmental Sensitivity Index (ESI) mapping program for [human-use resource](#) inventory.

- 380 locations?



Belhaven, Pantego Creek:
ADA accessibility
Canoe/kayak
Parking
Lat/Lon
Operator
Trailer parking
Street address
Inland-joint-coastal water

Data Catalog



Surf Spots

[View in Map](#) [Map Services](#)

Surfing Spots of North Carolina

Surfing spots are inherently dynamic along North Carolina's sandy, trailing-edge coastline. Our coast features beach break sand bars that oscillate between seasonal winter and summer profiles in response to major coastal storms and prolonged flat spells. In addition, coastal inlets, beach replenishment projects, sand bags and hard structure stabilization can interact to affect many surf quality

Creator Name(s)

N.C. Coastal Atlas

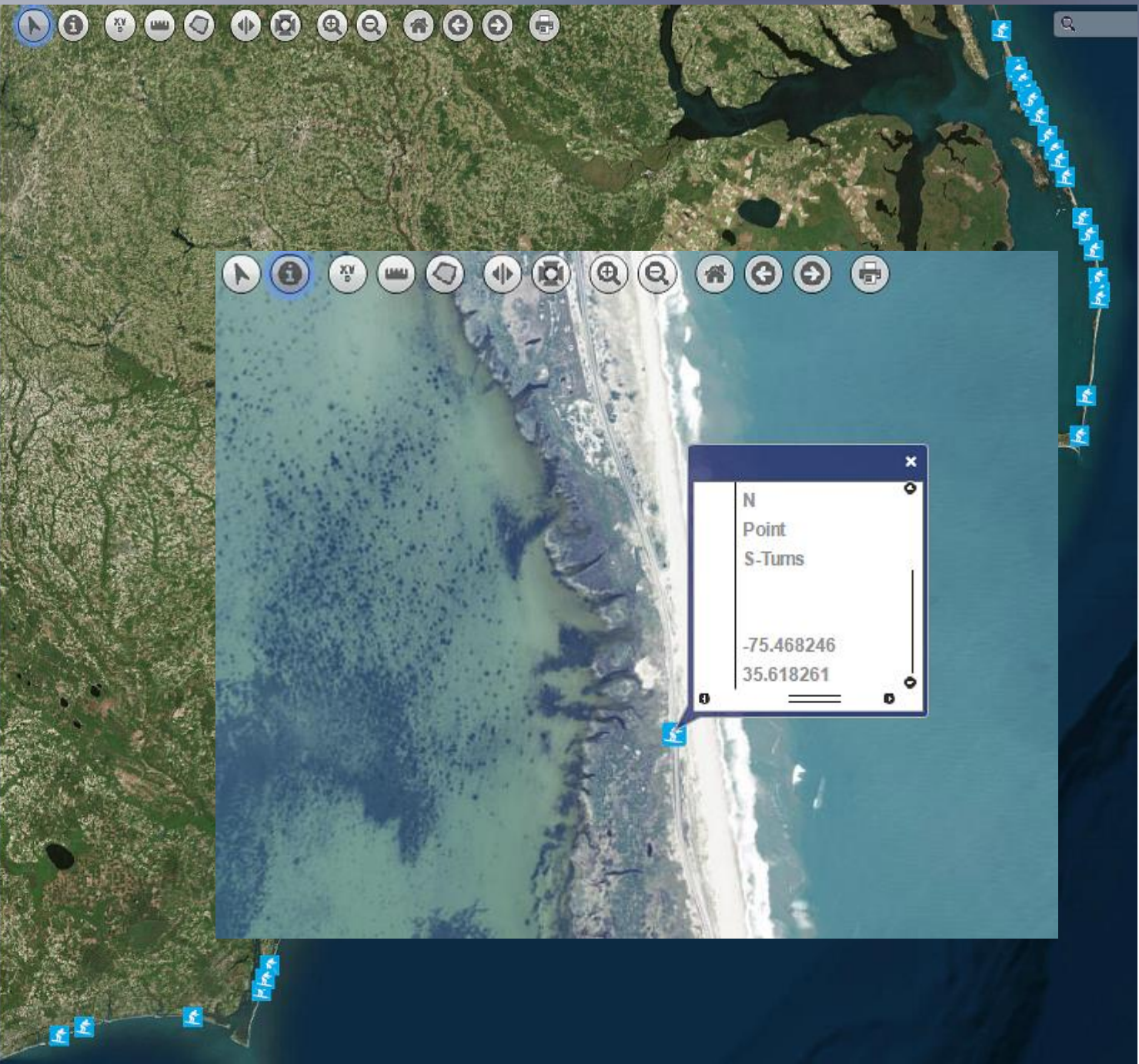
Categories

Recreation and Tourism

Legend

Surf Spots

Surf Spots



Popup window content:

- N
- Point
- S-Turns
- 75.468246
- 35.618261

90 km

Map Contents

Legend

Surf Spots

Surf Spots



Virginia - Outer Banks : Northern Outer Banks : **Jennette's Pier South HD Cam & Surf Report** [★ Favorite](#)

Cams & Reports Regional Forecast Spot Forecasts Buoys Charts Map Units: Feet

Want an unlimited view of this spot? [TRY PREMIUM FREE NOW](#)



Live broadcast Camera Rewind Embed ?

Premium members can save favorites
[Try Premium Free Now](#)

12:00:08 PM [Share](#) [Tweet](#)

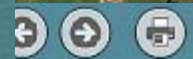


This report updated **Sunday, March 13 at 7:15AM**

1-2 ft - ankle to knee high

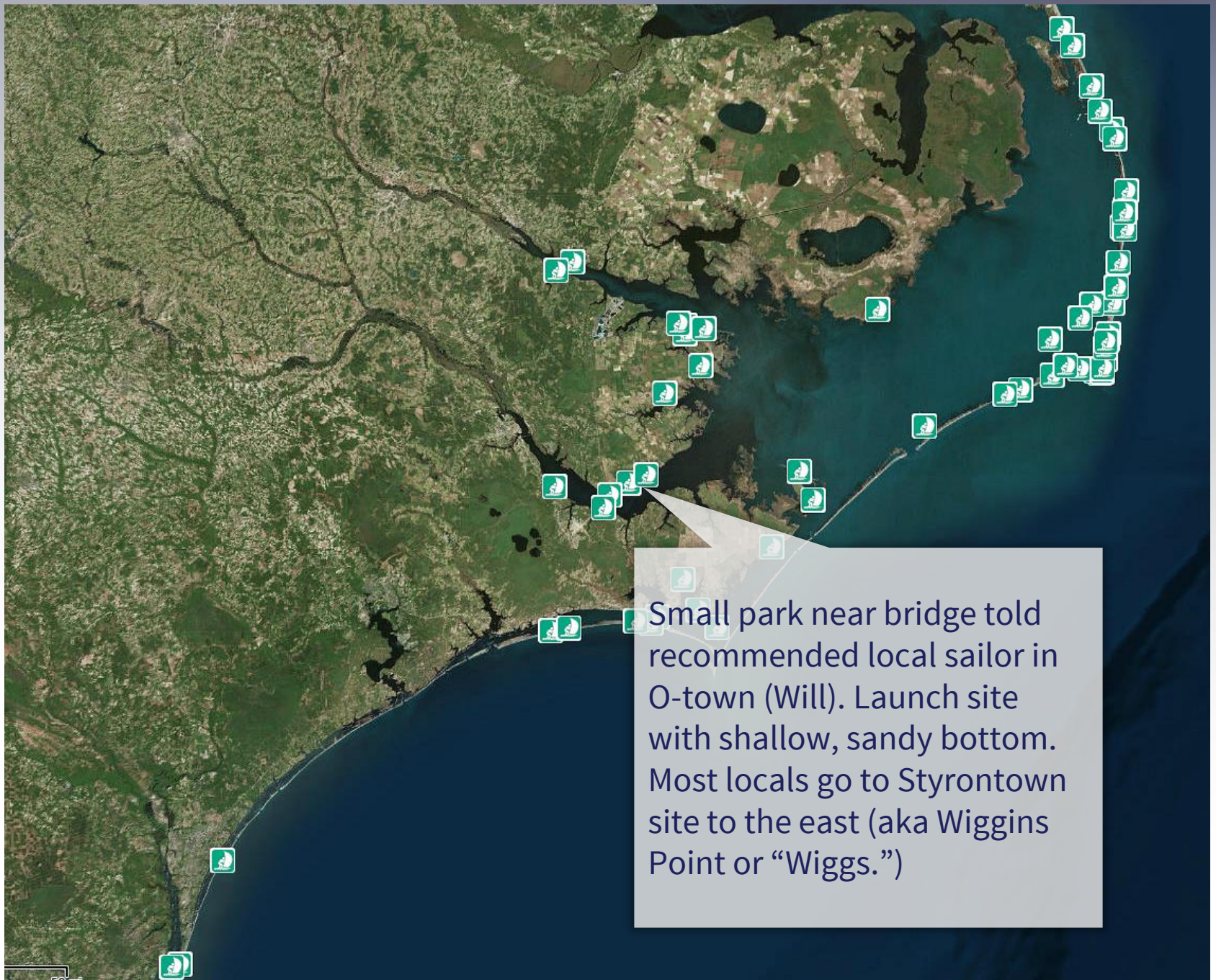
Download

Nearby Cams	Nearby Spots	Recent	Favorites
■ Kitty Hawk Pier	7:15 AM	-	
■ Eckner Street	7:15 AM	-	
■ Old Station (Laundromats)	7:15 AM	-	
■ Avalon Pier	7:15 AM	-	
■ Kill Devil Hills	7:15 AM	-	
■ Abalone St.	7:15 AM	1-2ft	
■ Nags Head	7:15 AM	1-2ft	
■ Jennette's Pier North	7:15 AM	-	
■ Jennette's Pier Fish Cam	7:15 AM	-	
■ Jennette's Pier South	7:15 AM	1-2ft	



point
-Tums

5.468246
6.618261



Small park near bridge told recommended local sailor in O-town (Will). Launch site with shallow, sandy bottom. Most locals go to Styrontown site to the east (aka Wiggins Point or “Wiggs.”)

Coastal Wind Atlas...

Volunteered by ECU Jacob Twarog and Nick Lucchetti

<http://arcg.is/1Nm3Lt8>

North Carolina Coastal Wind Atlas

A North Carolina coastal wind climatology spanning the years 2009 -2012 is presented. 17 stations from the North Carolina Climate Retrieval and Observations Network of The Southeast Database (NCCRONOS) were used to calculate monthly average wind statistics, generate station specific wind roses, and create directional interpolation maps.

2009-2012 Composite

April

May

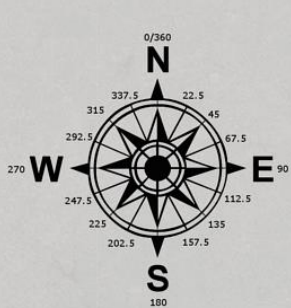
June

July

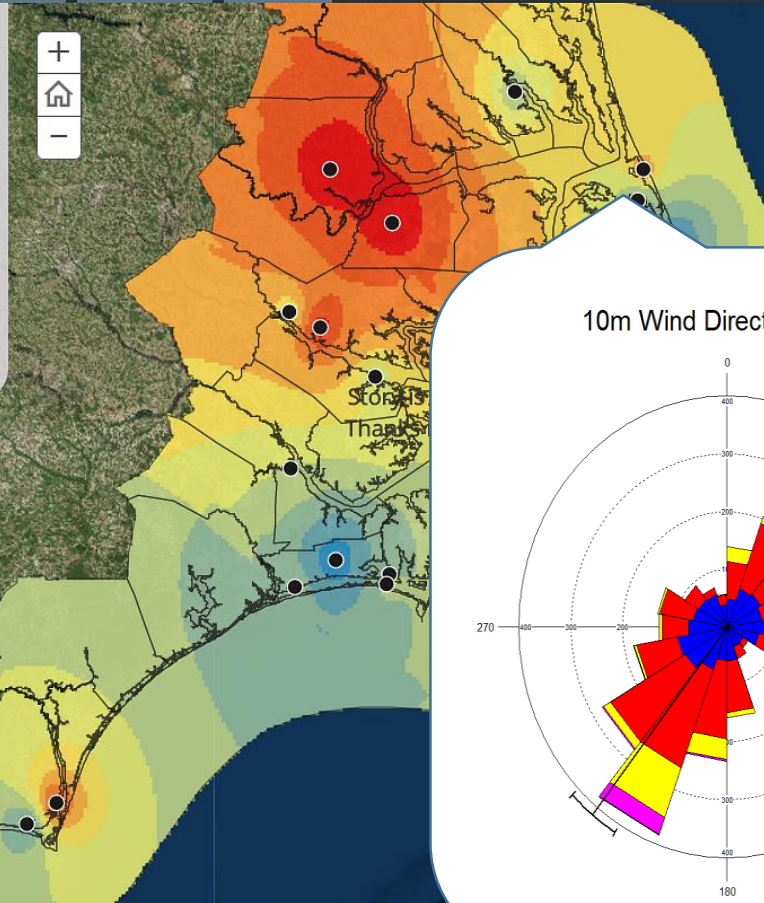
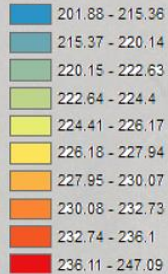
August

September

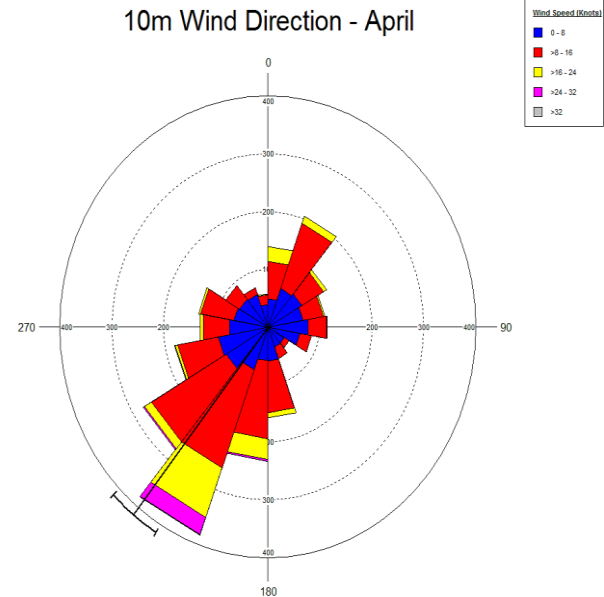
October



Composite Wind Direction Degrees



10m Wind Direction - April



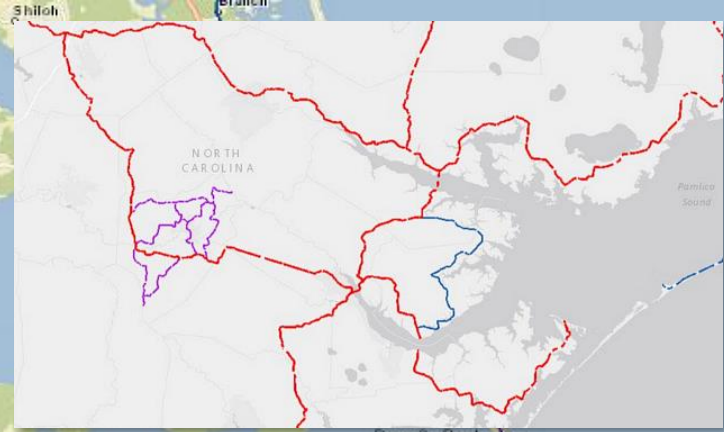
Bicycle Routes

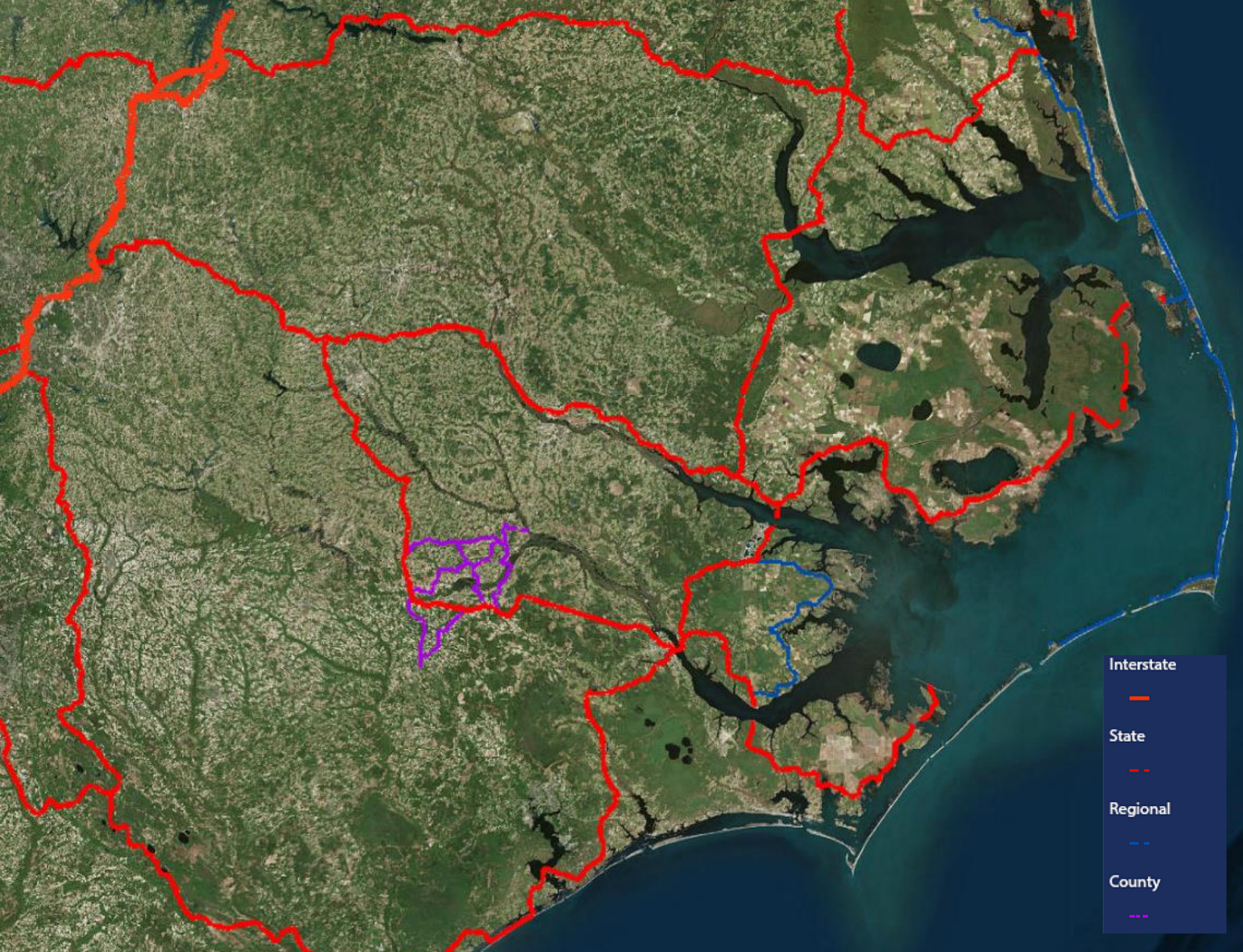
- A map showing biking routes for the state of North Carolina as defined by the Division of Bicycle and Pedestrian Transportation. The data were created in collaboration with NCDOT GIS and derived from DOT roads data.

- **Additional Information and Resources**

- [Walk Bike NC](#)

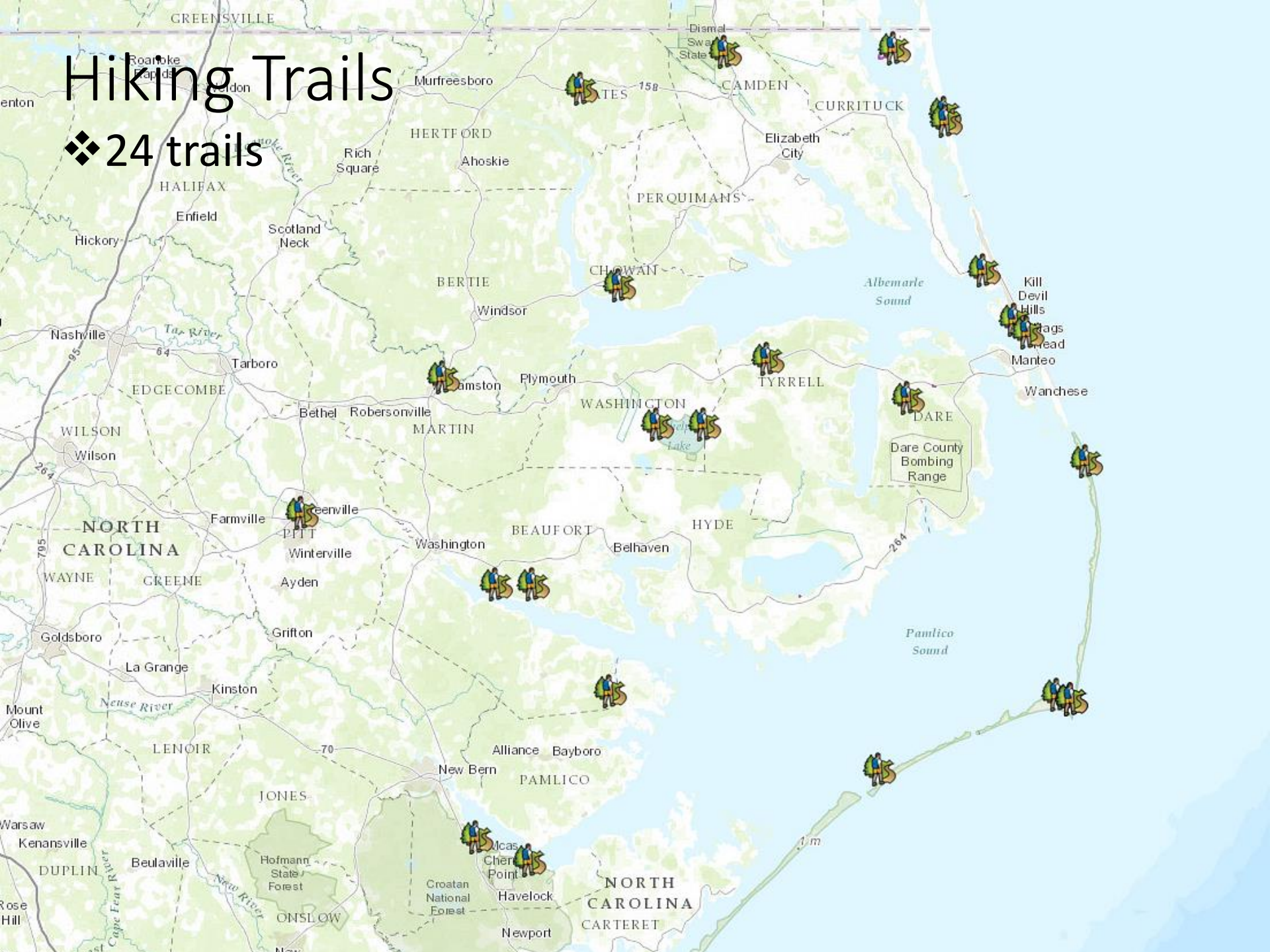
- [NCDOT GIS](#)





Hiking Trails

❖ 24 trails



Crowdsourcing with AGOL

The screenshot displays the ArcGIS Online Editor interface for a map titled "Hiking Points". The browser address bar shows the URL: <https://ecu.maps.arcgis.com/apps/Editor/index.html?appid=ece90f32ec144ef18fabfce437577745>. The browser's bookmark bar includes "Apps", "NOAA Charts", "WF WF Portal", "NWS JAX", "NWS CHS", "NWS MHX", "WPC", "f3.tiera.ru/1/genesis...", "Redirect Notice", "HRRR Model Fields ...", "Bookmarks", and "Other bookmarks".


The interface features a top navigation bar with a pencil icon and the title "Hiking Points". On the left, a sidebar shows a "trails" layer and a "HikingPts" feature set, both marked as "New Feature". The main map area shows a map of Chowan County, NC, with a scale bar indicating 0, 3, and 6 miles. A pop-up form titled "HikingPts" is open, displaying the following fields and controls:

- Name:** An empty text input field.
- Description:** A rich text editor with formatting options (bold, italic, underline, text color, background color, bulleted list, numbered list, link, unlink, insert image, and insert video).
- InfoURL:** An empty text input field.
- Edited by:** allenth_ecu seconds ago
- Delete:** A button to remove the feature.

The map includes a search bar, a home button, and a scale bar. The map data is attributed to Esri, HERE, DeLorme, USGS, NGA, and others.

Content for Story Mapping

NC Land of Water: The Scuppernon Story

A story map   

The Scuppernon Coastal System

Geology and Landforms

Ecosystems and Resources

History and Culture

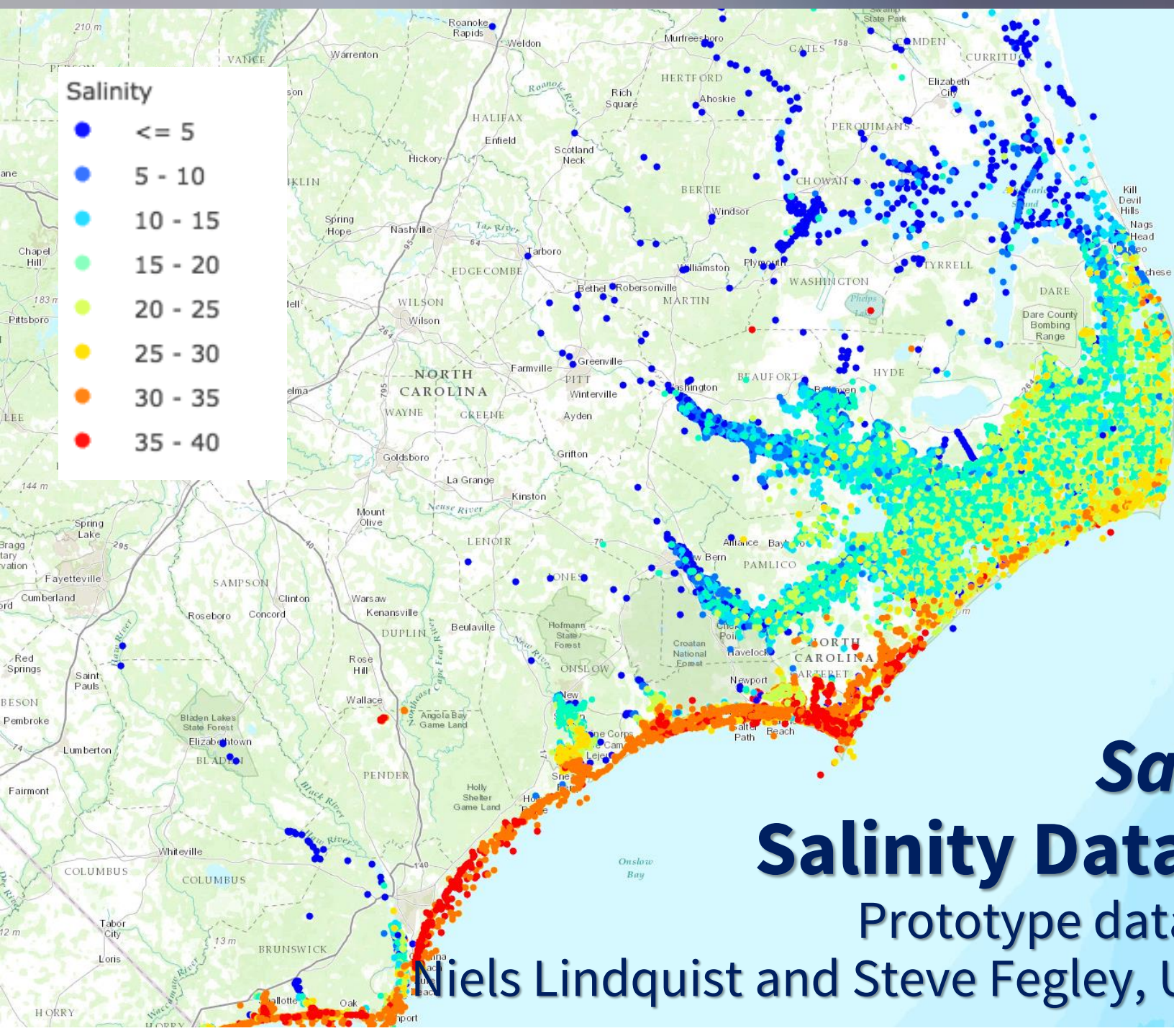


The North Carolina Land of Water (NC LOW) is a 501(c)(3) regional economic development initiative. Its mission is to undertake activities that will contribute to long-term sustainable economic development based on the natural resources and cultural history of the region, integrate the diverse areas of the Inner and Outer Banks for their mutual benefit, and enhance the quality of life of its residents. The program is dependent upon the successful integration of the region's human culture and history, natural resources and societal needs.

The Scuppernon region has abundant natural and cultural resources around which to develop a very special ecotourism experience.



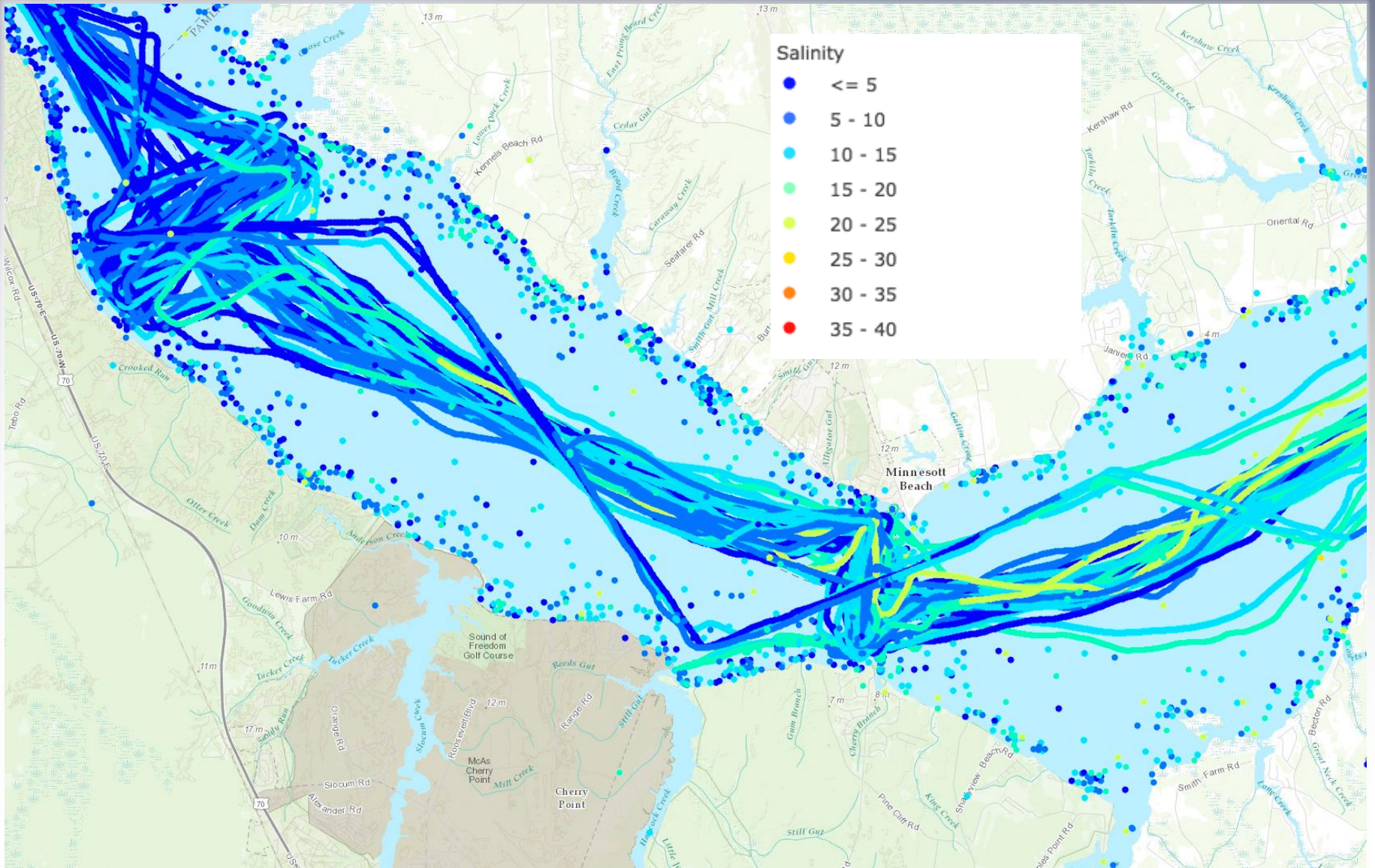
<http://arcg.is/1TFNT90>



SalWise Salinity Database

Prototype data model

Niels Lindquist and Steve Fegley, UNC IMS



Questions? Feedback?

Please take a moment to ask any questions or provide any feedback that you may have.

Visit <http://www.nccoastalatlases.org/contact-us> to submit any comments, issues or feature requests.

Thank you!

Rob Howard howardro@ecu.edu

Tom Allen allenth@ecu.edu