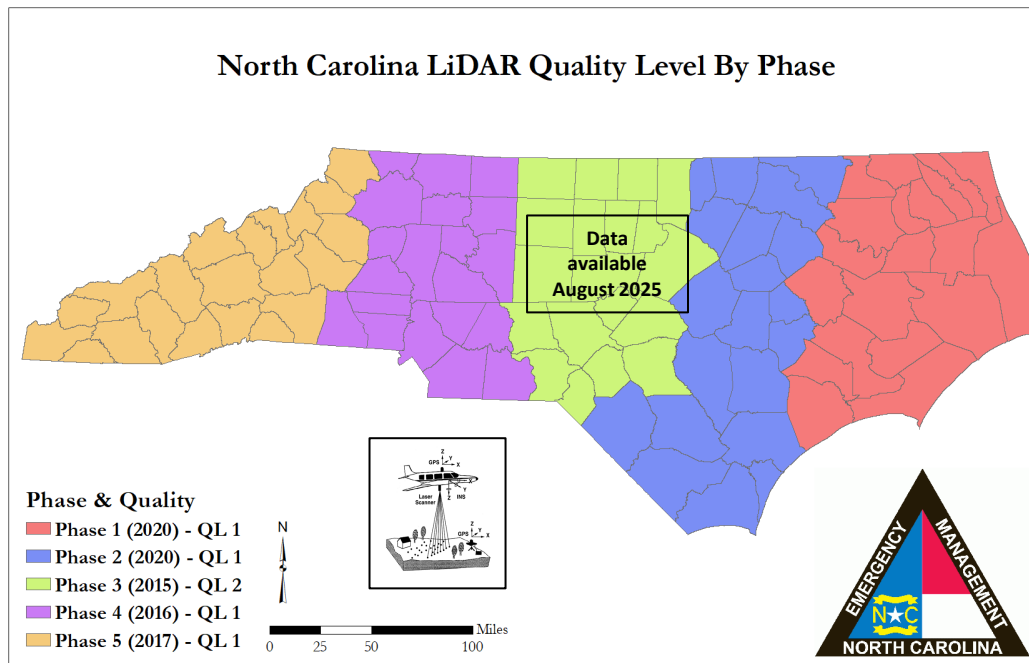




## NC Light Detection and Ranging (LiDAR) Elevation Data 2024 Data Collection

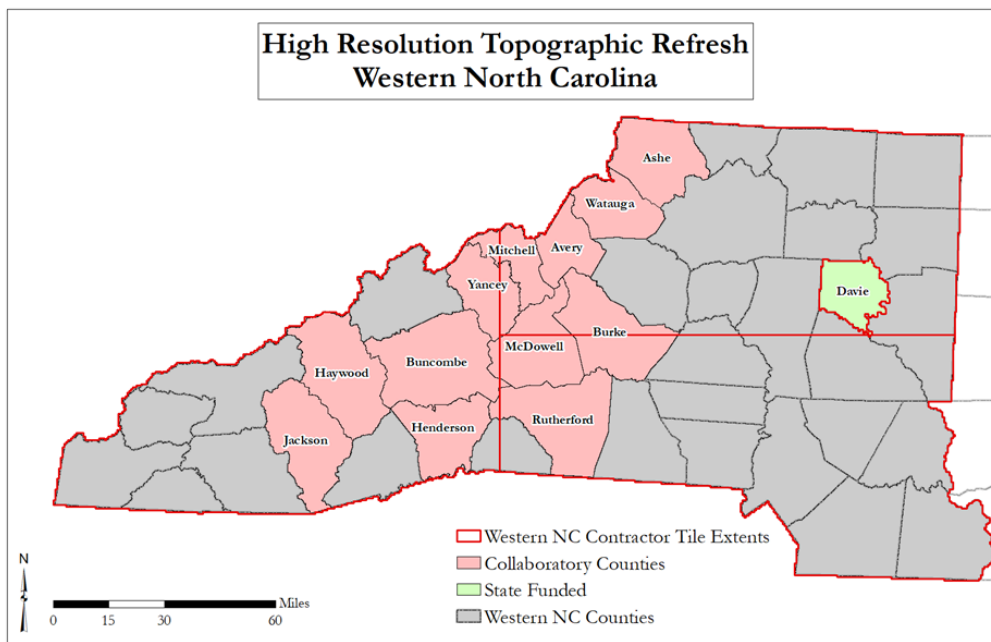


NAD83(2011), NAVD88, and US Survey Foot will be used to collect new LiDAR data in Phases 3, 4, 5

The new datums and the International Foot will be used when we start the 4<sup>th</sup> phase of statewide LiDAR data collection



## 2025 Data Collection Area



- Aerial imagery received from NC Collaboratory
  - Alexander County
  - Ashe County
  - Avery County
  - Burke County
  - Watauga County
  - McDowell County
  - Mitchell County
  - Rutherford County
- LiDAR (NC Collaboratory)
  - Delivery of Lidar data will begin in early July