

GO! NC

Overview and Demonstration

Presented by: NCDOT GIS Unit

Discover ◇ Build ◇ Connect

What is **GO! NC**?

- ❖ **GO! NC** = GIS Online at NCDOT
- ❖ It is NCDOT's implementation of ArcGIS Online for Organizations (AGOL).
- ❖ It is also, a larger system that supports the publishing of NCDOT user's geospatial data to the world.
- ❖ How you use **GO! NC** depends on if you are a NCDOT user with data to publish or a user of that published data.

How are people using **GO! NC**?

Use Cases:

1. Photogrammetry
2. Materials & Test
3. Strategic Transportation Investments (STI)

October 2012 – NC 12



Photogrammetry

Old Process Before GO! NC

- ❖ Request goes out for area to be flown
- ❖ Photogrammetry hand delivered a copy of imagery to IT Operations
- ❖ GIS Unit creates Request for Change (RFC) documents
- ❖ GIS Unit generates map services on Dev & Test servers (cached tiles at each stage)
- ❖ Operations creates map services on QC & Production – includes copying cached tiles
- ❖ From the time imagery is acquired until it is available to the public would take about 3 to 4 **days**

Now With GO! NC

- ❖ Photogrammetry has the ability to create a Web Mapping Service through AGOL as needed
- ❖ From the time imagery is acquired until it is available to the public now takes about 3 to 4 **hours**
- ❖ They maintain, update and upload it themselves for other to utilize and view

“Hurricane Sandy Hotspot” Swipe Tool Web App

<http://ncdot.maps.arcgis.com/apps/StorytellingSwipe/index.html?appid=91864f5f417844bc4f4775aa7f7f4f21&webmap=b92c5011ef8b4966b559d582558cd09b#>

Materials & Test

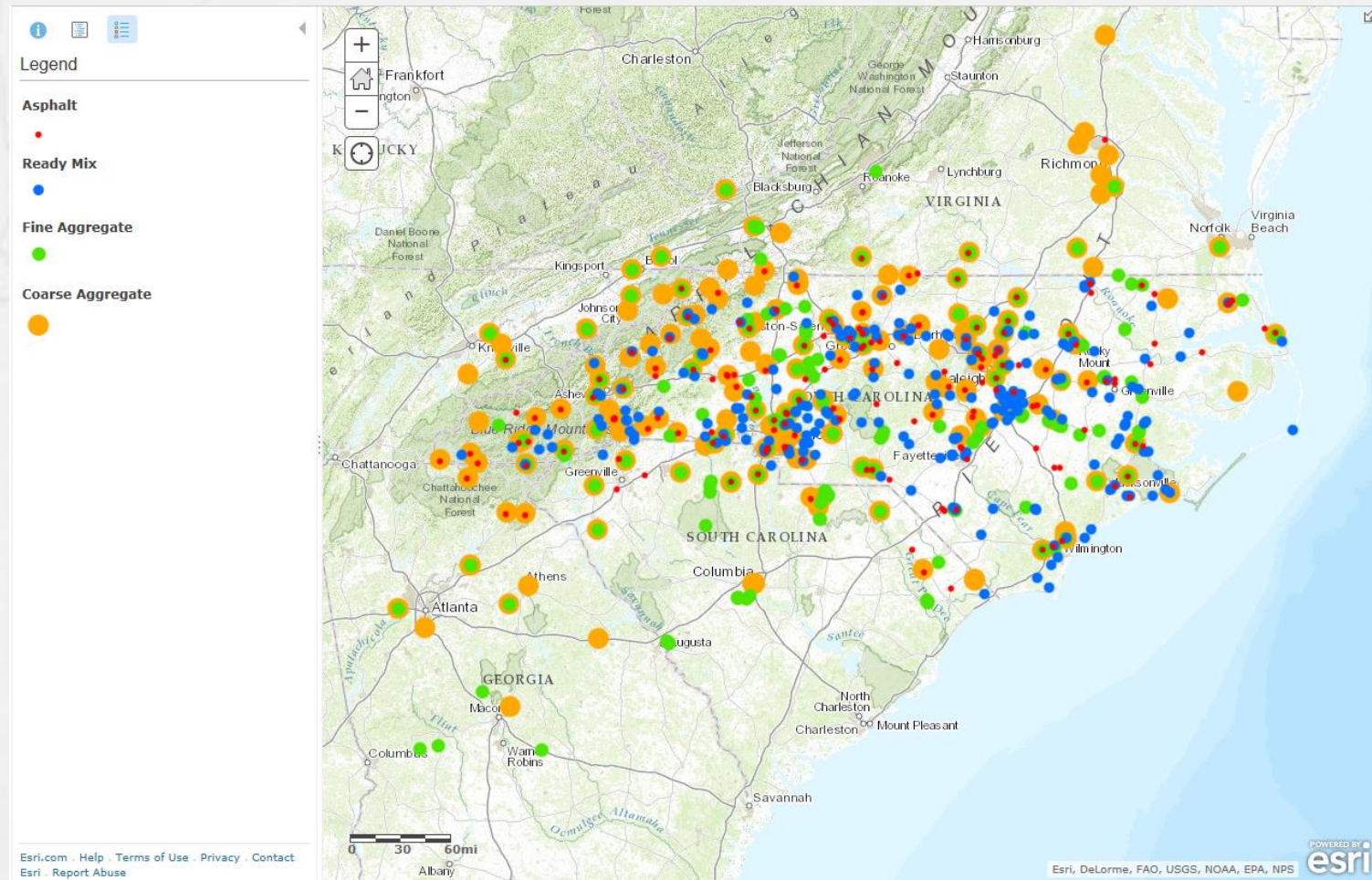
Before GO! NC

- ❖ Met their initial need for annual DOJ requirement
 - ❖ Traditional GIS tools and techniques (ArcView)
 - ❖ Produced static PDF maps
- ❖ No information was shared beyond the DOJ
- ❖ Only reviewed annually
- ❖ Required intervention by the GIS Unit

After GO! NC

- ❖ Use GO! NC to edit and maintain database of vendors more efficiently
- ❖ Information share among all stakeholder and other interested parties
 - ❖ Ex. County maintenance engineers can search via location
- ❖ Use published services for cost analysis and distance calculations
- ❖ Reviews occur on a frequent basis to ensure proper business practice
- ❖ Minimal intervention needed by the GIS Unit

Materials & Test Web Map

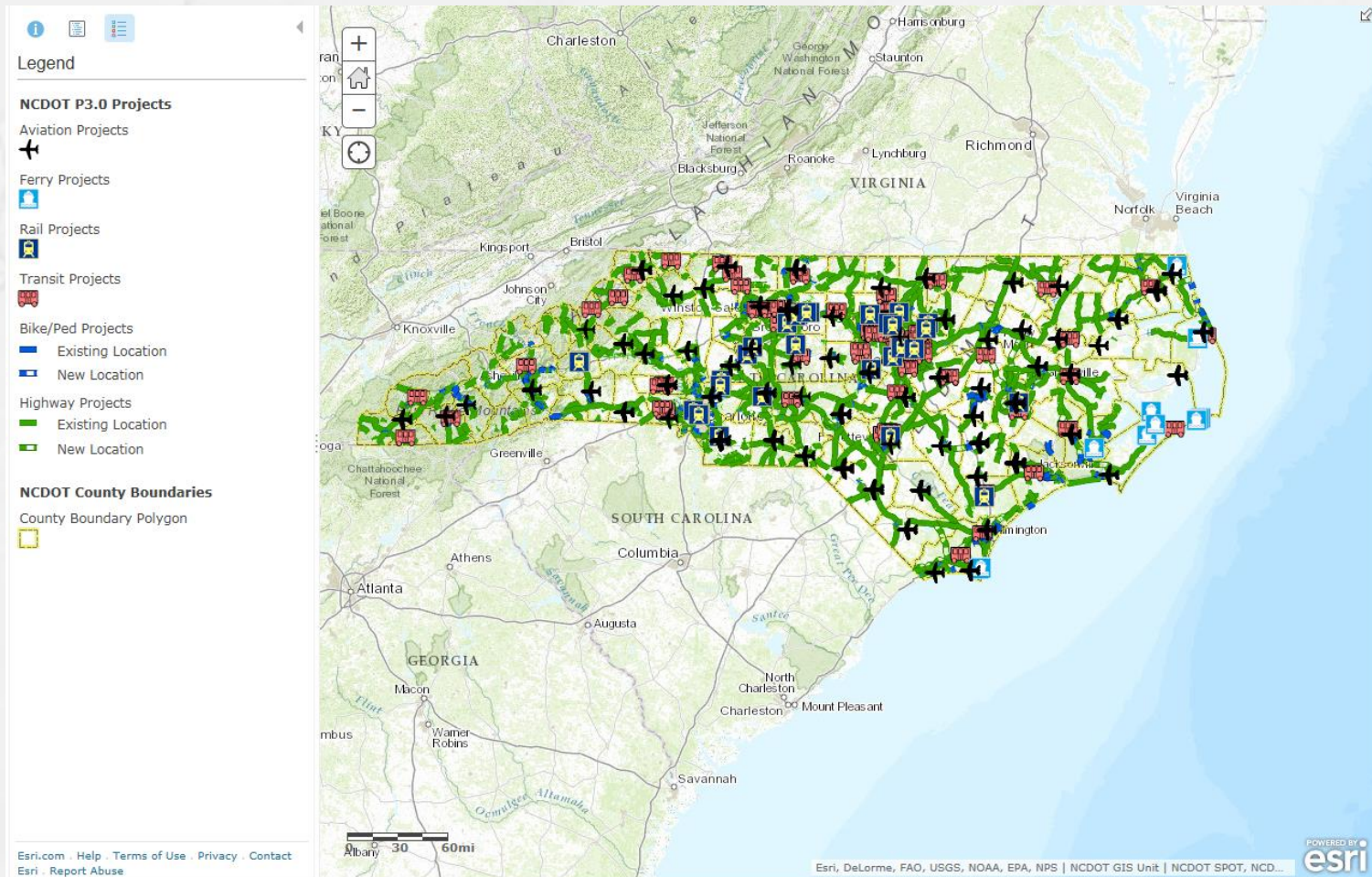


STI Public Viewer

Using GO! NC

- ❖ The data is published through an online map viewer to interested citizens
- ❖ The data is also available to users who contributed to the submittal and scoring process for comment
- ❖ As the data is refined, updating the online map is nearly instantaneous
- ❖ With GO! NC we are able to combine the prioritization data with other published NCDOT data to tell a more meaningful story
- ❖ Map was made publicly available on June 3rd, 2014

STI Results Web Map



STI Web Map on the Web

- ❖ Data on **GO! NC** can be embedded in a web page
- ❖ This means that **GO! NC** is not the only way to view/share/display your data
- ❖ [Example](#)

Where Does the Data Come From?

- ❖ NCDOT users *publish* their spatial data through **GO! NC** when they want.
- ❖ NCDOT users own and manage their published spatial data.
 - Transportation Planning Branch
 - Functional Class
 - Natural Environmental Unit
 - Wetland Mitigation Sites
- ❖ Other Services Across the Web
 - NCONEMAP***
 - NOAA
 - Census

User Capabilities

Data Services – Data provided through web services that can be consumed by tools users use every day – ArcMap, Web Maps, SDV Online, Mobile devices.

Online Web Maps and Apps – Ready-to-use maps and application templates users can access with any browser. And anyone can create their own for their use.

Discovery Tools – Tools to help users find your data and maps.

Exploring the **GO! NC** Portal

All you really need:

- Internet access

DEMO

Recap & Highlights

EMPOWERING THE PUBLISHER!

As The Publisher YOU Can:

- ✓ Publish data whenever you like
- ✓ Maintain your own data

YOU are the owner of YOUR content

EMPOWERING THE USER!

As The User YOU Can:

- ♦ **DISCOVER** resources to help you make effective business decisions
- ♦ **BUILD** geo-enabled solutions that work for you and your users
- ♦ **CONNECT** with others through shared data

Where We Are Today

As of today there are 17 Business Units publishing or soon to be publishing on **GO! NC**:

- ✓ GIS Unit
- ✓ DENR Mitigation Group
- ✓ Geotech
- ✓ Traffic Safety
- ✓ Transportation Planning
- ✓ Traffic Survey
- ✓ Rail Division
- ✓ Hydraulics
- ✓ P3
- ✓ Materials and Test
- ✓ MSAU
- ✓ Facilities Management
- ✓ BikePed
- ✓ STOC
- ✓ Program Development
- ✓ Photogrammetry
- ✓ Aviation

Milestones

- ❖ Participant in ESRI's AGOL Beta Program
- ❖ Went live with ESRI ArcGIS online subscription back in October of 2013 with 2 publishers
- ❖ **GO! NC** was formerly announced in the NCDOT Employee News in February 2014
- ❖ 10 new active publishers since Jan 2014
- ❖ Presented to governor at the opening of the Innovation Center on October 10, 2013

*“Active growth of the **GO! NC** environment created a new form of dialog with the NCDOT partners and public. The most recent development of the STI Results Map made all transportation projects and data associated with them available for everybody's viewing. Visual representation of the data solved a lot of open questions, helped find better solutions, and shortened discussion time.”*

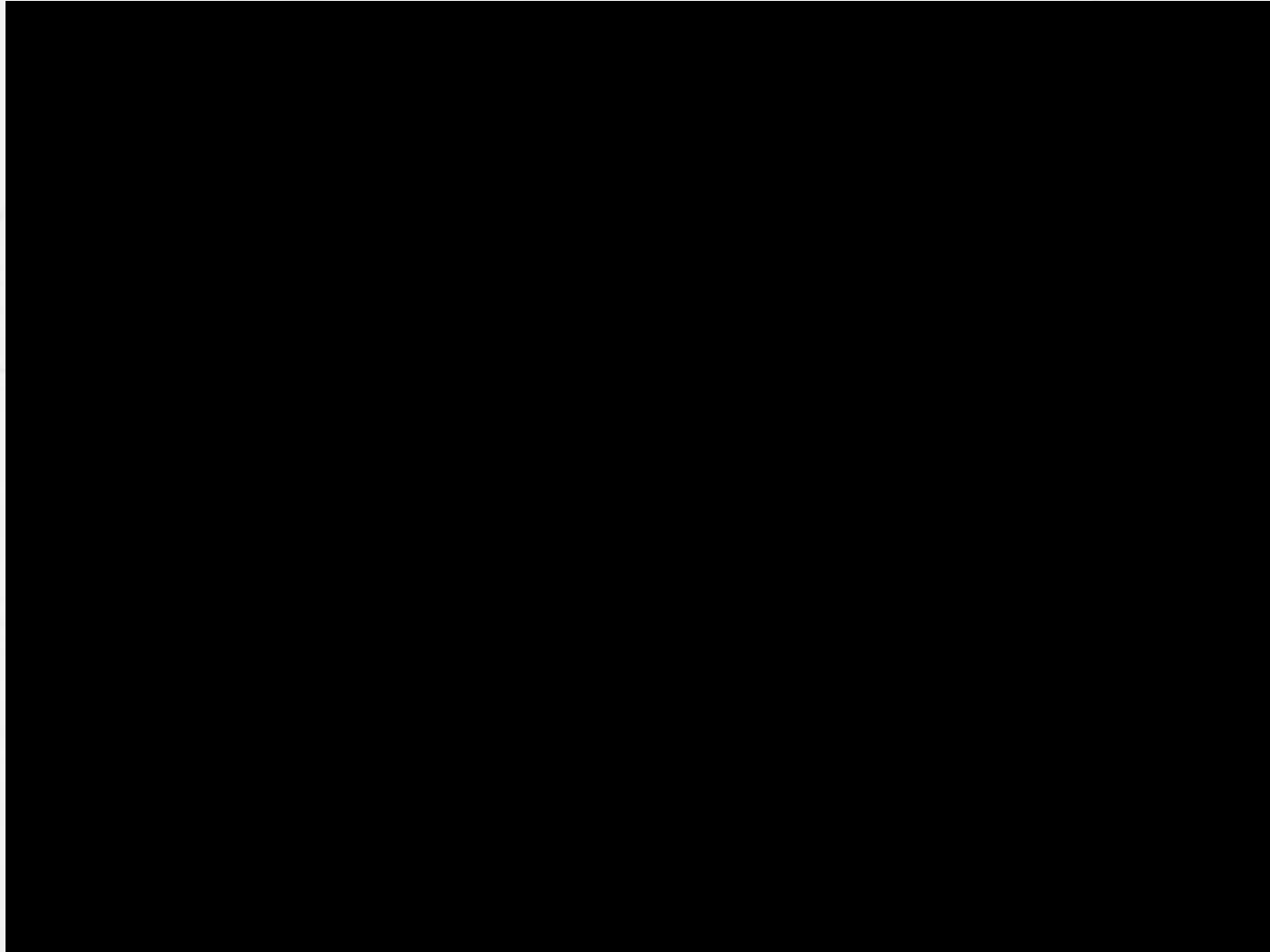
-Elena Talanker, Transportation Planning, July 2014

Outreach & Support

- ❖ Videos
- ❖ Marketing table
- ❖ Brochures
- ❖ Creation of Sharepoint support site
- ❖ Presentations
- ❖ Discussion board
- ❖ Word of mouth
- ❖ Surveys (planned)
- ❖ Workplan with Communications Office
- ❖ Twitter
- ❖ Training



Video Outreach



The Future of **GO! NC**

- ❖ More targeted outreach
- ❖ More training & support
- ❖ Focus on Governance – Standards & Practices
- ❖ Integration with SharePoint
- ❖ Mobile
- ❖ Online Editing
- ❖ Open Data

GO! NC From a National Perspective...

AASHTO's Technology Innovation Group (TIG) 2

- <Renamed AASHTO Innovation Initiative (AAI) also referred to as UPlan 2>
- TIG 2 is evangelizing a powerful yet easy to use web-based decision support tool that maps information for planning and project development.
 - It allows data sharing (open or selective) among various units within the transportation agency.
 - It also allows data sharing between agencies, with other transportation agencies nationwide and with the public.
- North Carolina, Pennsylvania, & Minnesota
- Working with 5-10 adjacent states on their plans
- **GO! NC** is one of four systems chosen as a best practice and used as an example nationally for State DOTs.
 - Better integration with surrounding States
 - User group

IPLAN
ITD PLANNING NETWORK

A collaborative information site brought to you by ITD

Administrative Boundaries - Application
Bridges - Application
City-Urban Boundaries - Application
Designated Routes up to 129,000 Pounds - Application

IPLAN is Idaho Department of Transportation's (ITD) portal through which ITD staff, business partners, and others can access and publish geospatial information pertaining to transportation in Idaho.

Watch our videos to get started:

- o [IPLAN Training Videos and Manual](#)

For assistance in using **IPLAN**:

- o [ITD Website](#)
- o Other Users: ****Coming soon****
- o Request User Account: Email [Maranda Obray](#)

The information contained in this website is provided as a public service to the citizens of Idaho and to the Internet community. The information available from this website is subject to change on a regular basis, without notice. While ITD makes every effort to provide useful and accurate information, ITD, its agents, and employees make no warranty as to the correctness or accuracy of the information whether express or implied, in fact or in law, including, without limitation, the implied warranties of merchantability and fitness for a particular use. Users are advised that their use of any ITD GIS data is at their own risk.

ITD has no control of or liability for information on other pages linked to this website.

GO! NC Portal

<http://ncdot.maps.arcgis.com>

Internal Support Site



All Other Support: gishelp@ncdot.gov

External Support Site: Coming Soon!

Inside NCDOT
Resources & News for NCDOT Employees

Search this site... SEARCH Advanced Search

Home Employees Transportation Services DMV Business & Administration Site Map

INSIDE NCDOT » BUSINESS & ADMINISTRATION » TECHNOLOGY » GO! NC

GO! NC Resources

Welcome to the **GO! NC Resources** Site. This site provides information about using **GO! NC**.

Read these documents to get started:

- o [What is GO! NC - For Business Units](#)
- o [What is GO! NC - For Users](#)

[More GO! NC Videos](#)

GO! NC Portal (AGOL)

GO! NC Videos

GO! NC Publisher Resources

Inside GIS

Mission & Goals

Glossary & Acronyms

Document Library

Employee Contact Directory

Your Feedback
Make This Site Better

What is GO! NC?

What is GO! NC ?

Reference FAQs

o [Topics : General \(3\)](#)

o [Topics : Using AGOL \(3\)](#)

[Add document](#)

Discover ♦ Build ♦ Connect

GO! NC
NCDOT GIS ONLINE

gishelp@ncdot.gov

GO! NC System Status

All systems operating normally

[View GIS System Status](#)

Announcements

- 2nd Quarter 2014 Data Update
- ArcGIS Online Updated March 4th
- ArcGIS Online Update Coming in March 2014
- Functional Class Service Symbology Updated
- 1st Quarter 2014 Data Update
- New Service: NCDOT Highway Exits

Links of Interest

- [Esri ArcGIS Online Help](#)
- [Esri Blog for ArcGIS Online](#)
- [NC OneMap Data Explorer](#)

Questions?