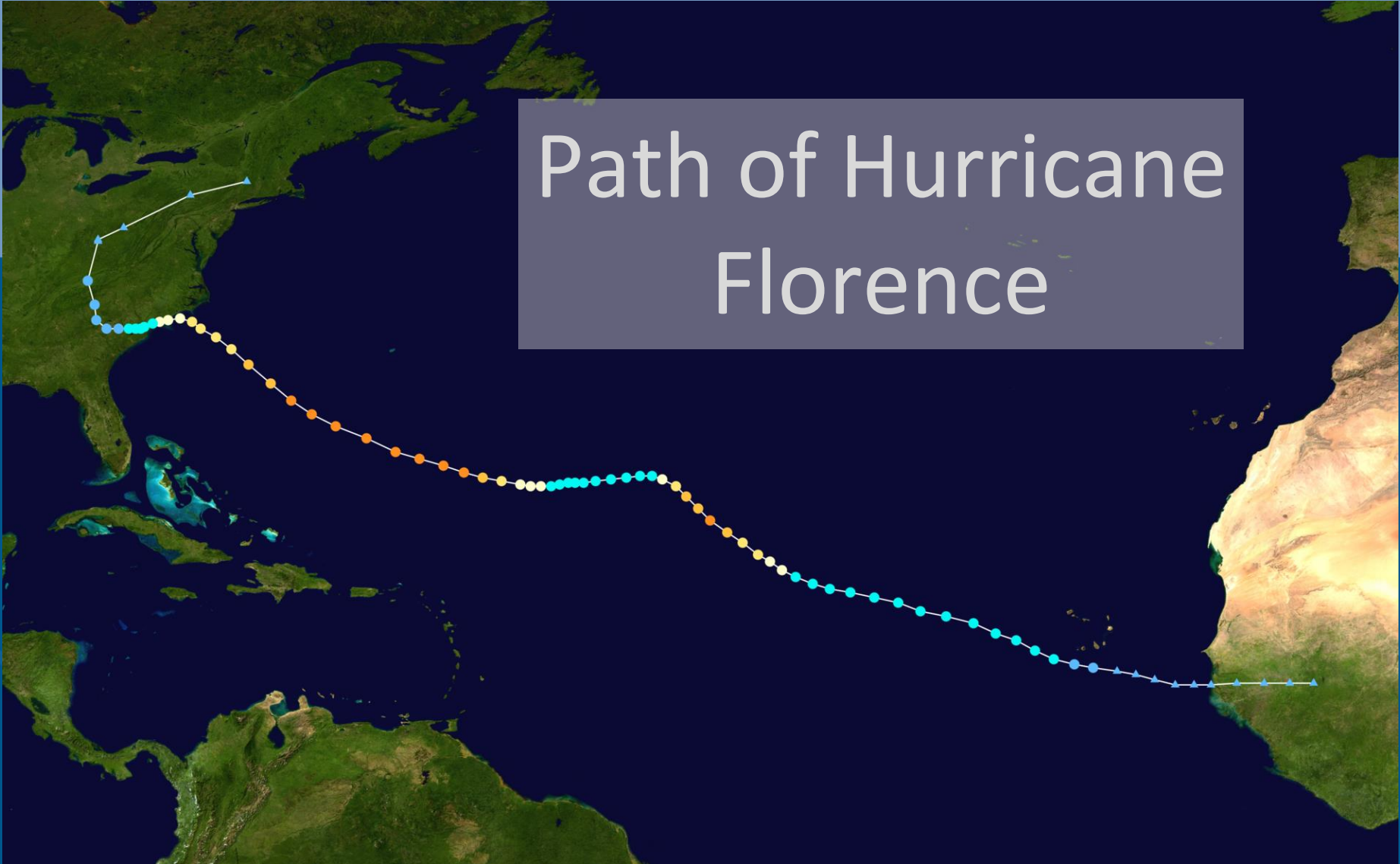
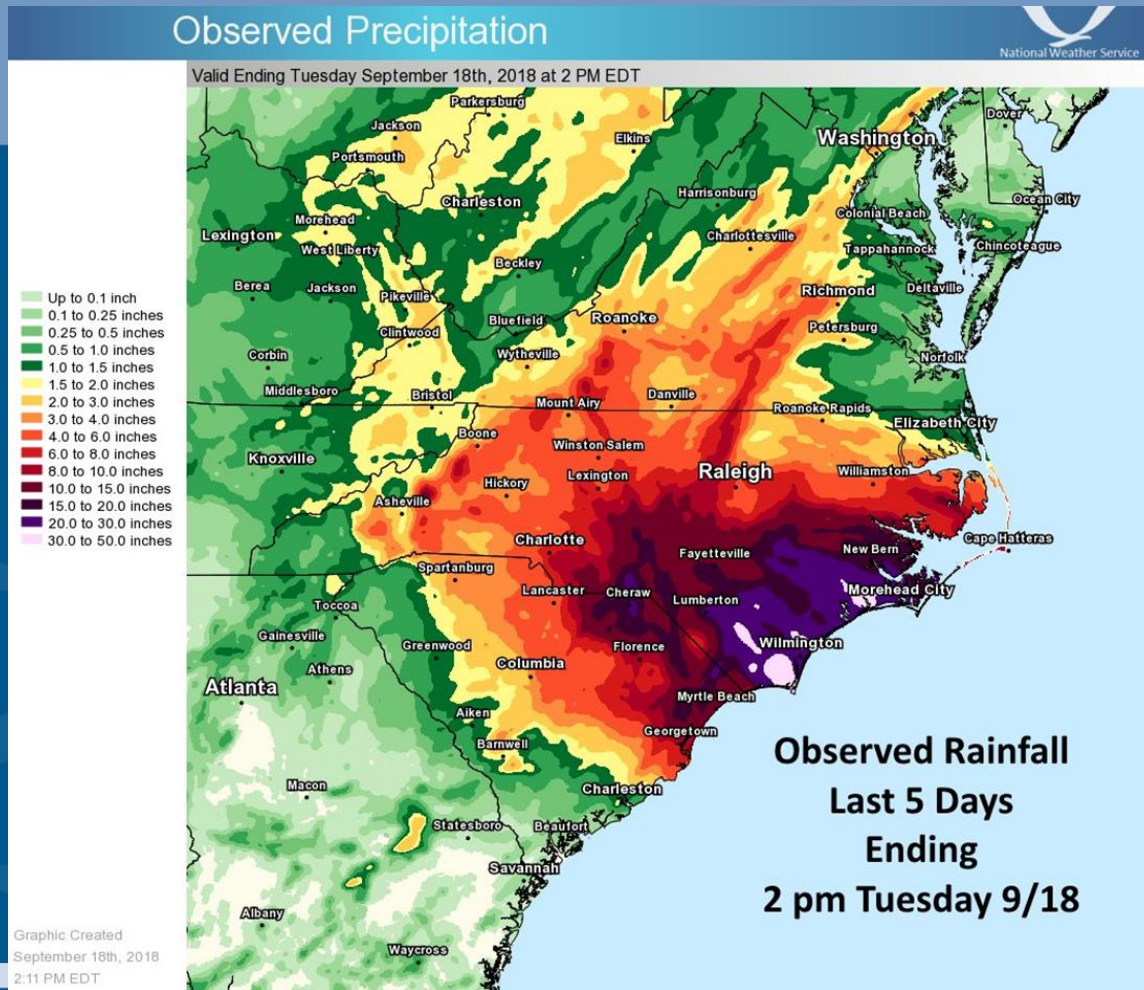


Hurricane Florence
City of Wilmington
GIS Response

Path of Hurricane Florence



Rain and Wind Event



Some Facts

- Landfall September 14 – near Wrightsville Beach at 7:00am
- Sustained Winds – 90mph – Category 1 Hurricane
- Storm Surge approx. 6ft
- State of Emergency – September 10
- City Operations closed September 11 -24
- Incident management Teams mobilized: September 12
- Post Storm activities started following passage of Tropical Storm Force Winds.

Before the Storm - GIS

- Coordination with GIS/IT between City and New Hanover County
- Staging of resources – personnel and equipment
- Inform the Citizens of shelters etc.
- Real time weather and traffic app.

Emergency Info

In Case of Emergency An Interactive Map of New Hanover County, NC

Search by Address

Legend

- Long Term Care Facilities**
 - Nursing Home
 - Adult Care Homes
 - Family Care Homes
- Local Layers**
 - Emergency Events
 - ACTIVE
 - INACTIVE
 - Emergency Shelters
 - Important Lines
 - Important Areas
 - Excavation Permit Labels
 - Evaluation Routes
- Active Hurricanes NOAA**
 - Atlantic, Central Pacific and Eastern Pacific Ocean Regions
 - Tropical Cyclone Track and Intensity Forecasts
 - Tropical Cyclone Watches and Warnings for Cores

Emergency Shelter: Johnson Pro-K Center
810.235.4133
1100 McIver St. WM NC, 28401
Lat: 34.25 Long: 77.54
For additional information about shelters and evacuation [CLICK HERE](#)

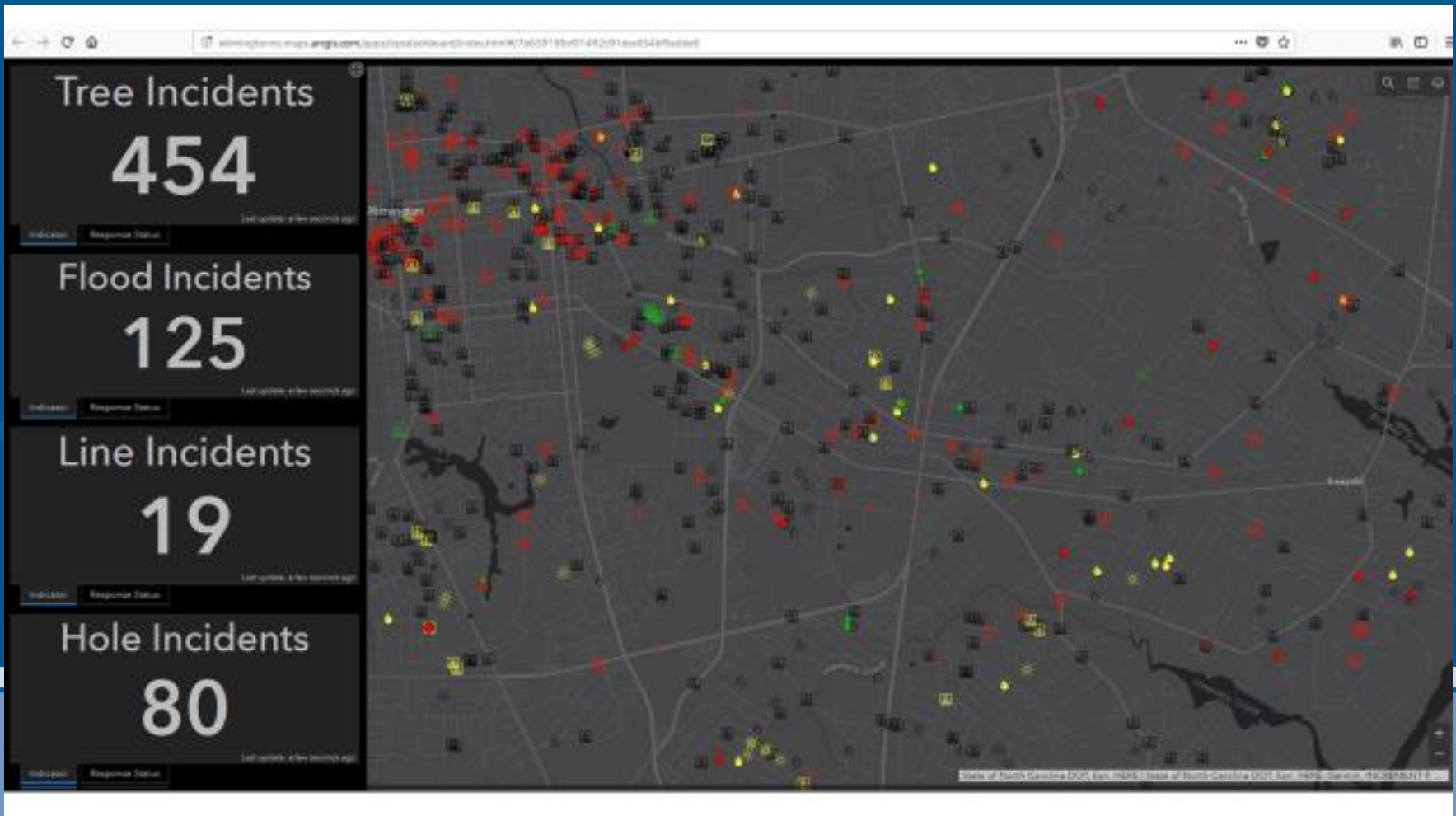
New Hanover County, State of North Carolina DOT, Ben. HARR, Raleigh, USGS, NOAA, EPA, USGS, MPO (Regional Office)

During the Storm

- WebEOC – ArcGIS integration

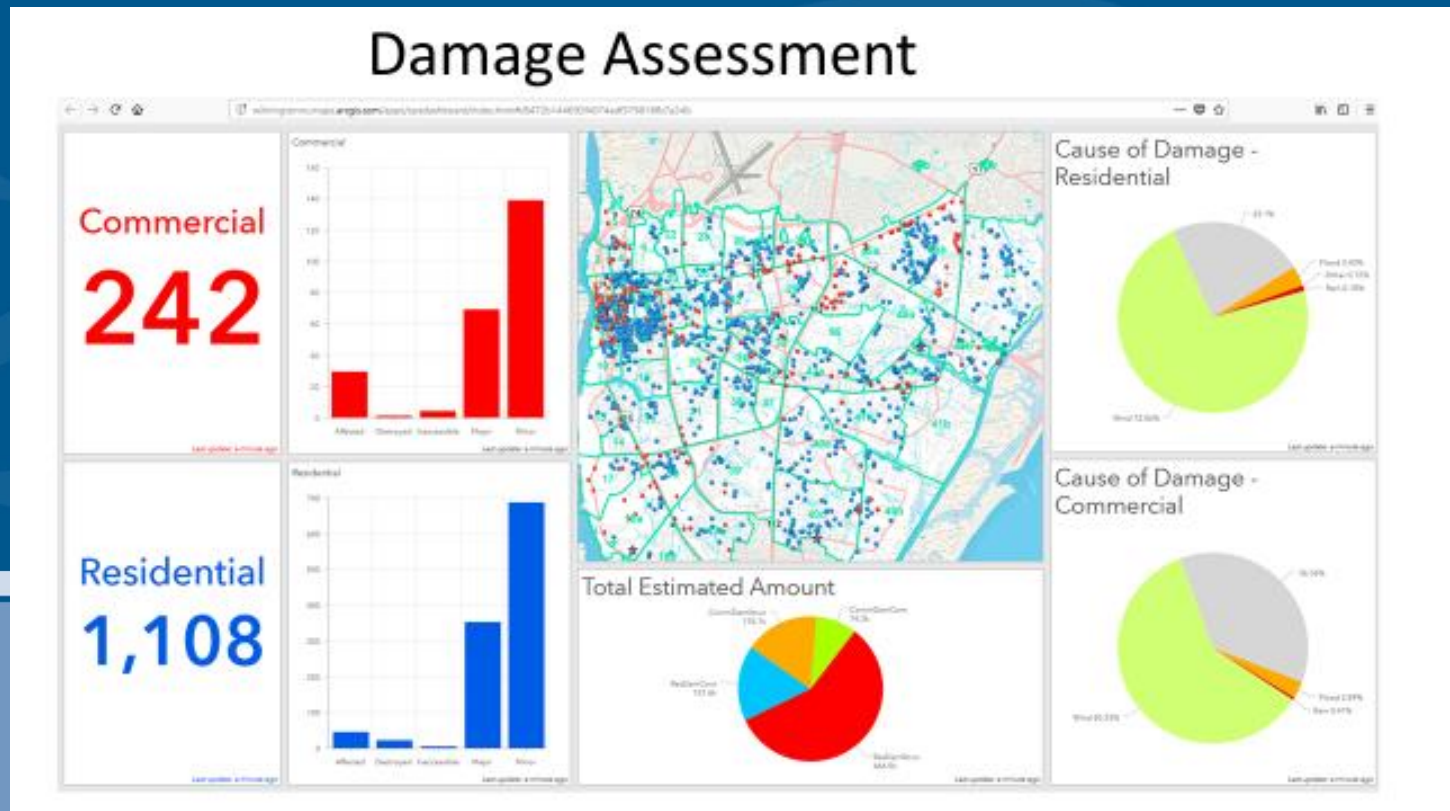


City EOC – Call center



After the Storm: Damage Assessment

- Field Data Collection: Collector for ArcGIS and Paper



Recovery – Debris pickup

- An estimated 1.3 million cubic yards of debris
- 20,000 to 25,000 cubic yards of debris a day
- Estimated cost of pickup - \$13-\$20 million
- Comparison:
- Hurricane Matthew \$1.1 million
- Hurricane Irene \$570,000



Recovery – Debris Pickup



An aerial night photograph of a city, likely New Orleans, featuring a prominent bridge over a river. The city lights are visible in the background, and the bridge's structure is illuminated. The text "#ILMSTRONG" is overlaid in the center.

#ILMSTRONG