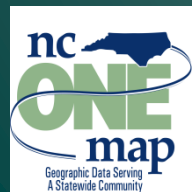


Statewide Orthoimagery Program

Northern Piedmont and Mountains 2014
Southern Piedmont and Mountains 2015

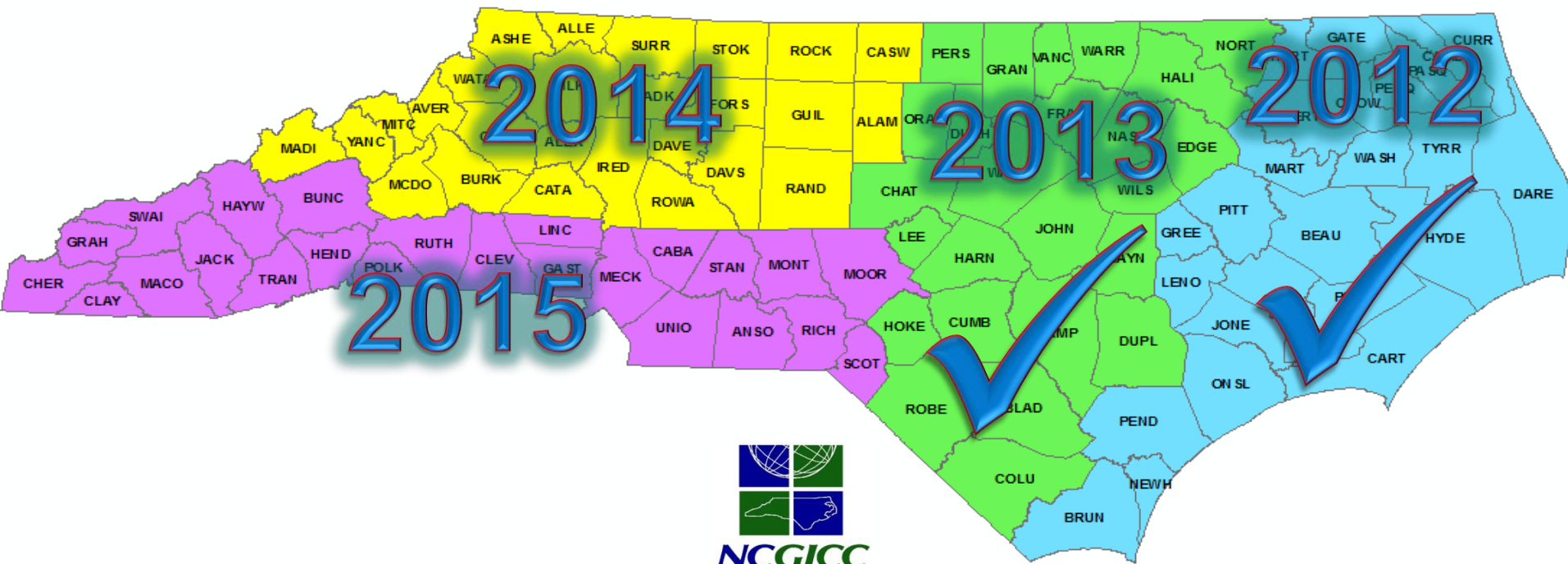
Geographic Information Coordinating Council
November 20, 2014



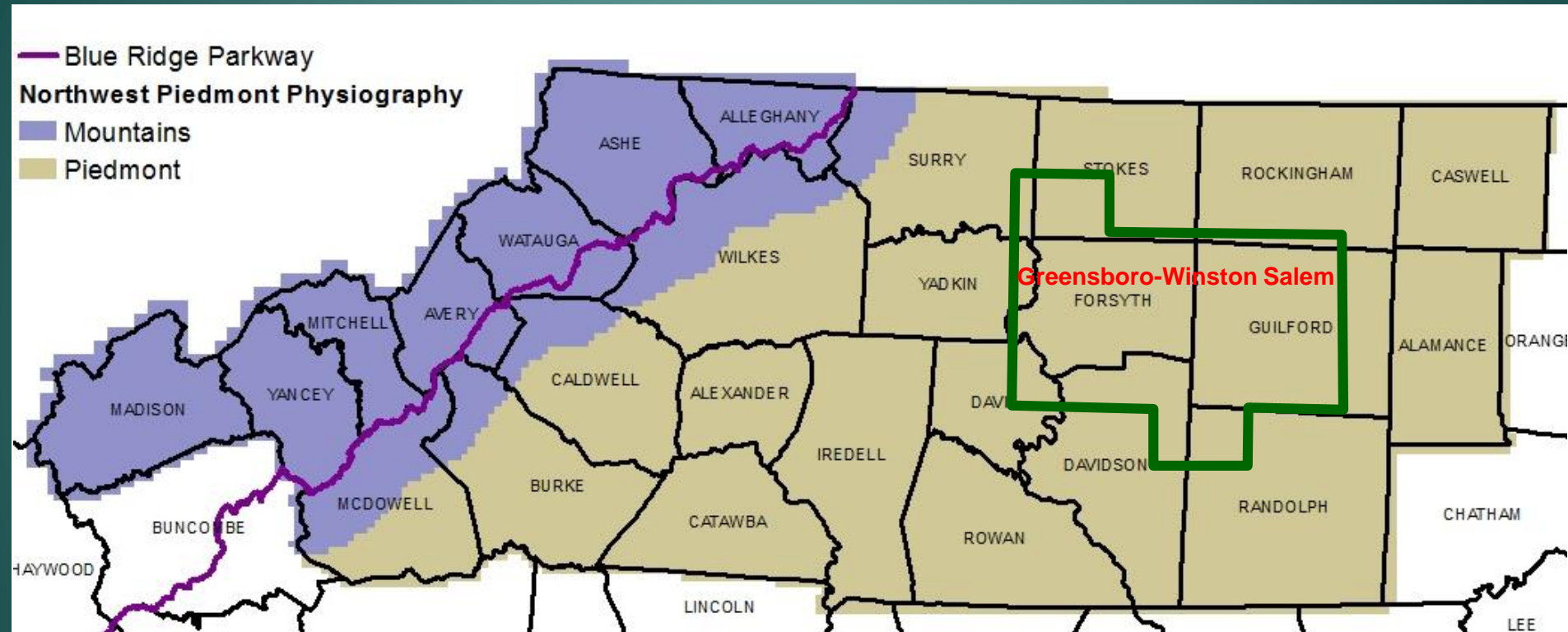
The Program



Statewide Orthoimagery Acquisition Cycle



Northern Piedmont and Mountains

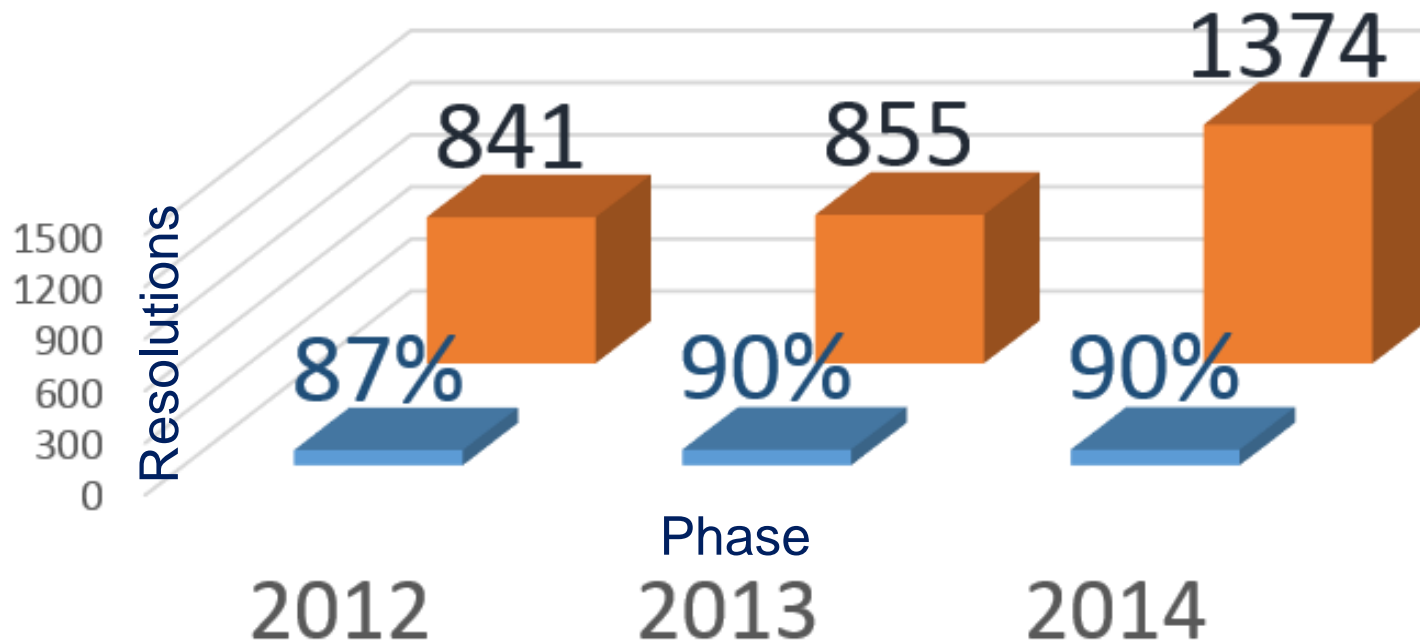


Northern Piedmont & Mtns 2014 Status

- Visual QC complete
- Final Delivery: 23 of 26 received
- Horizontal QC: 4 of 26 received
- NCDOT processed 12 of 26 MRSID (compressed) product

Quality Review Results

Number of Issues Tile Pass Rate



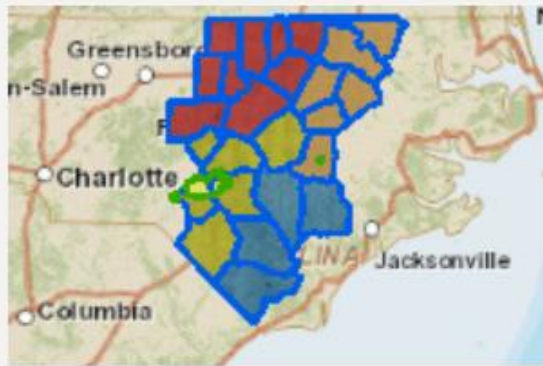
Path Forward

- NCDOT completes MRSID products
- NCGS completes horizontal QC
- Deliver to 911 PSAP late January
- Implement NC OneMap service by Feb 1

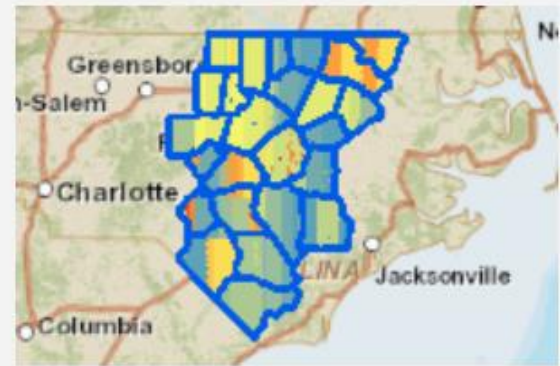
Lines of Communication



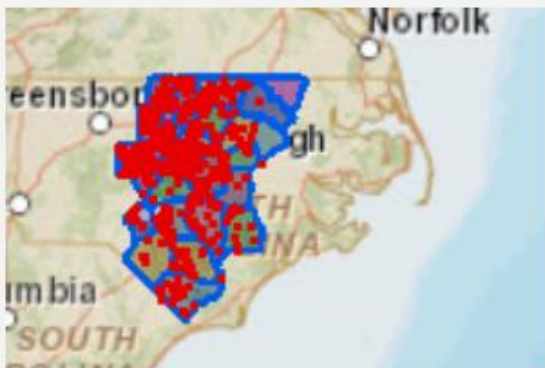
Map 1 - Statewide Acquisition Summary



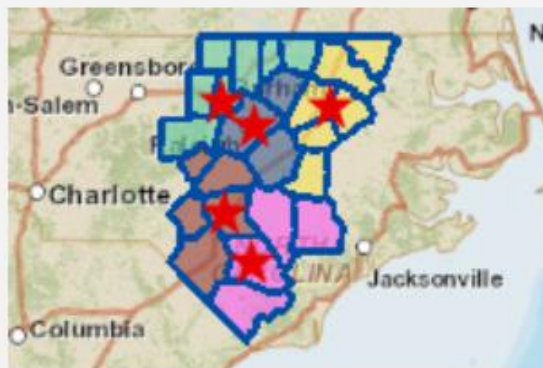
Map 2 - Basemap



Map 3 - Acquisition Summary



Map 4 - Quality Review Schedule

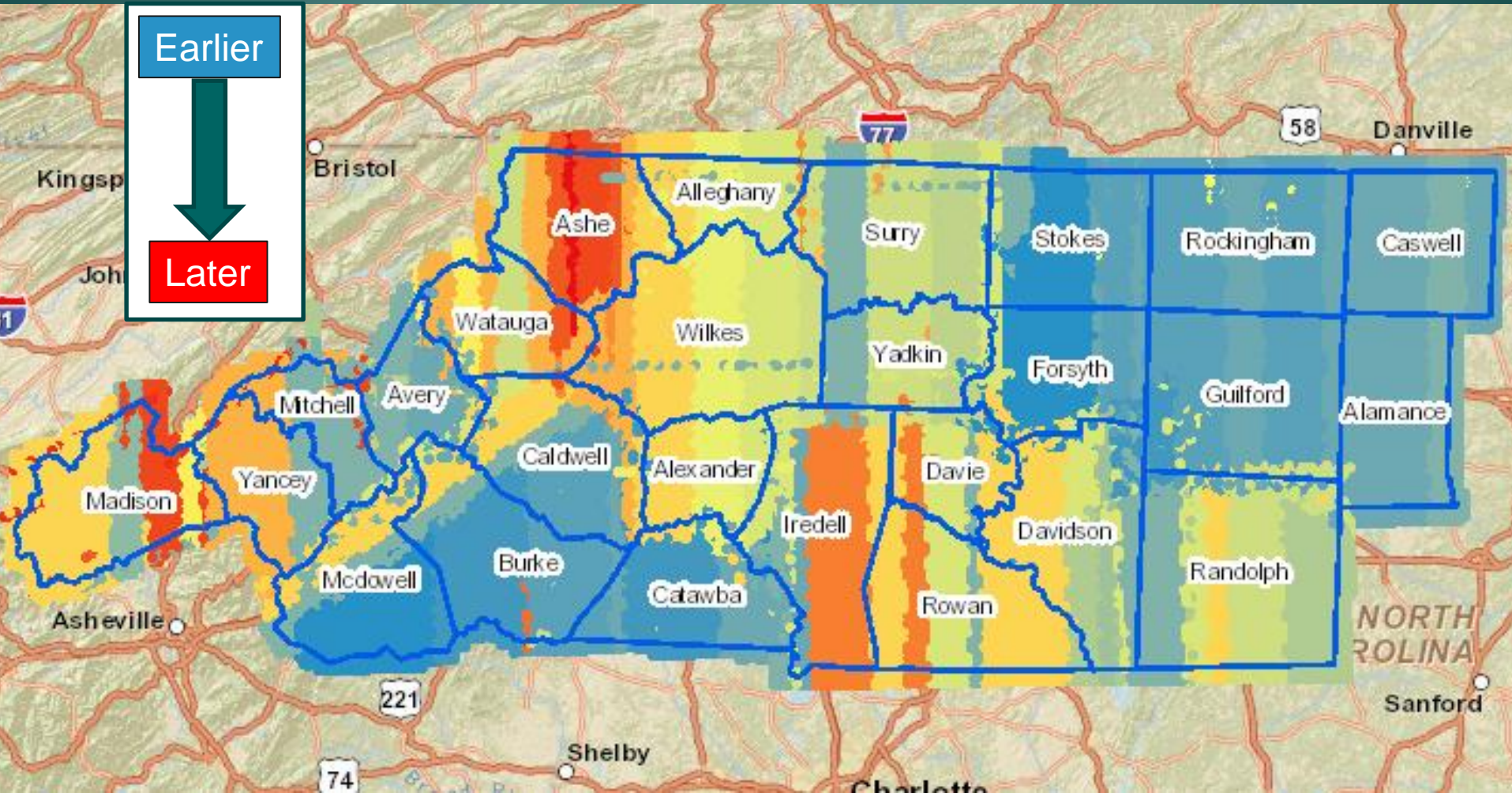


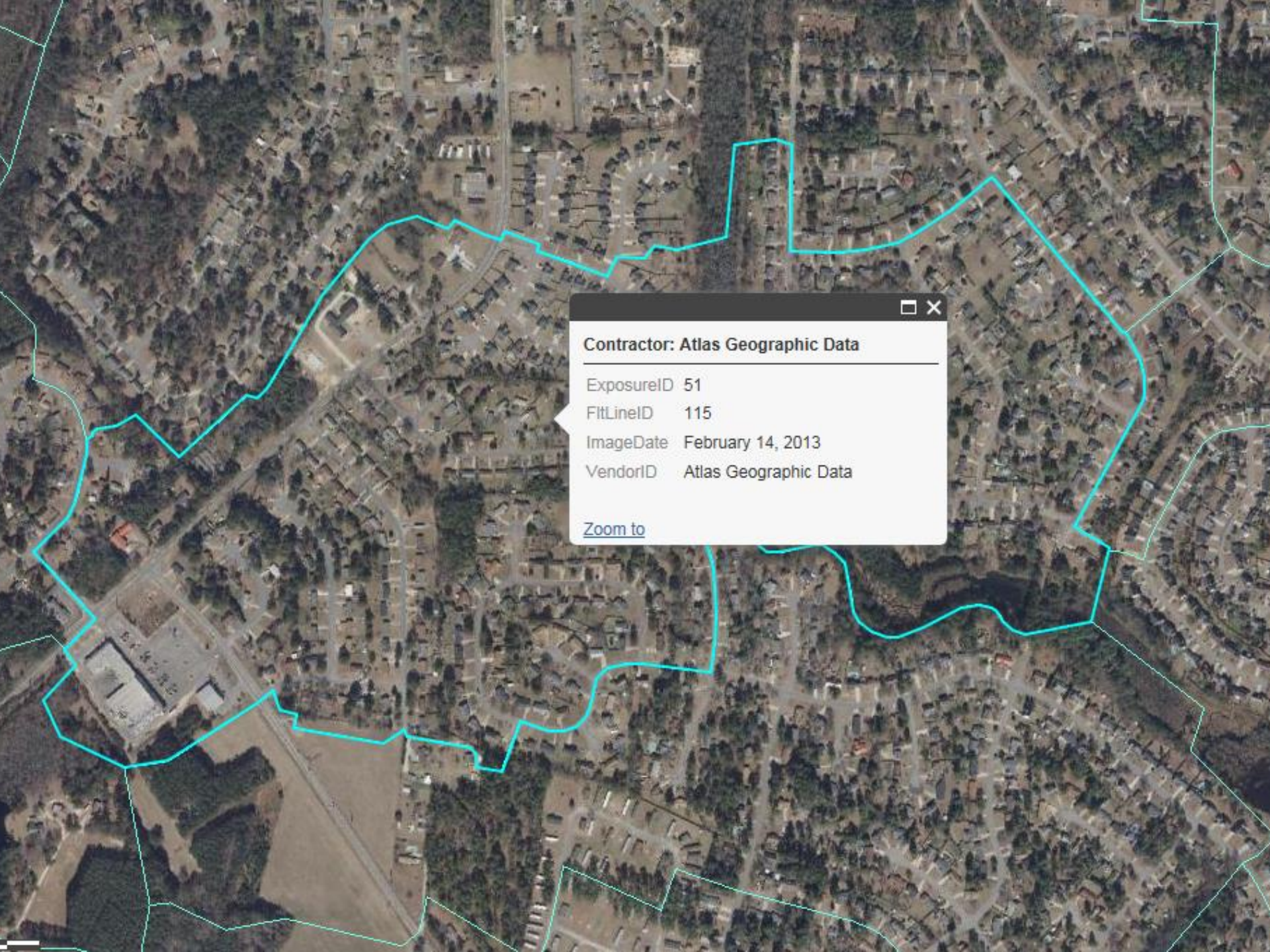
Map 5 - Final Delivery Sites

Documented Submitted Issues

The screenshot displays a web-based GIS application interface. At the top, there is a navigation bar with the following elements: 'Details', 'Legend', 'Print', 'Layers', 'Basemap', 'Measure', 'Share', and a search bar labeled 'Find address or place'. The map area shows a network of roads including Dalton Rd, King, E King St, Westview Dr, West St, Spruce St, Meadowbrook Dr, Kirby Rd, E School St, Beck Ln, Prostock Ln, and Walnut Hill Dr. A red square marker is placed on a road segment. A pop-up window is open over this marker, containing the following text: 'Sub Issue: Twisted or warped roads', 'Issue Description: Road is warped', 'Issue ID: 47', and 'Click Image for more detail:'. Below the text is a small aerial photograph with a green bounding box highlighting the road area. At the bottom left of the map, there is a scale bar showing 0, 300, and 600 feet. The bottom right corner features the text 'State of North Carolina DOT, Esri, HERE, DeLorme, Intermap, iPC, USGS, ME...' and the Esri logo.

Dates of Acquisition





Contractor: Atlas Geographic Data

ExposureID 51

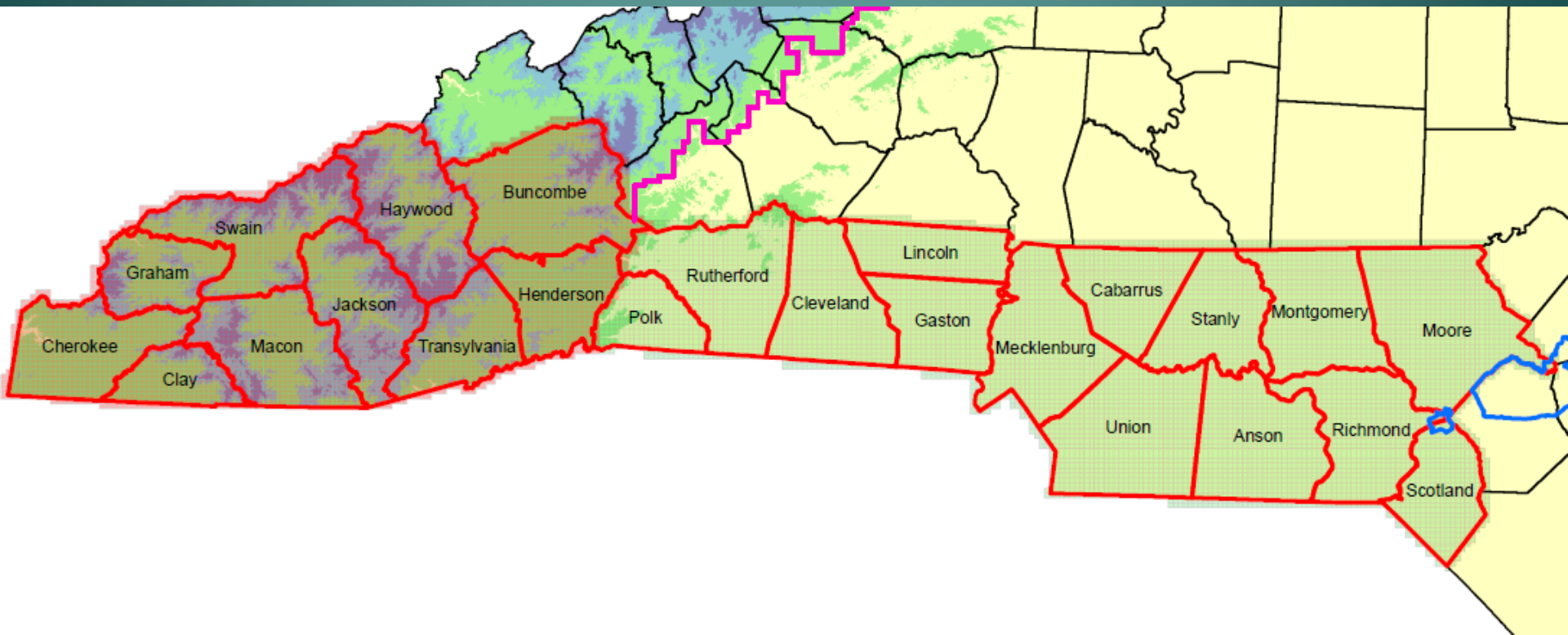
FitLineID 115

ImageDate February 14, 2013

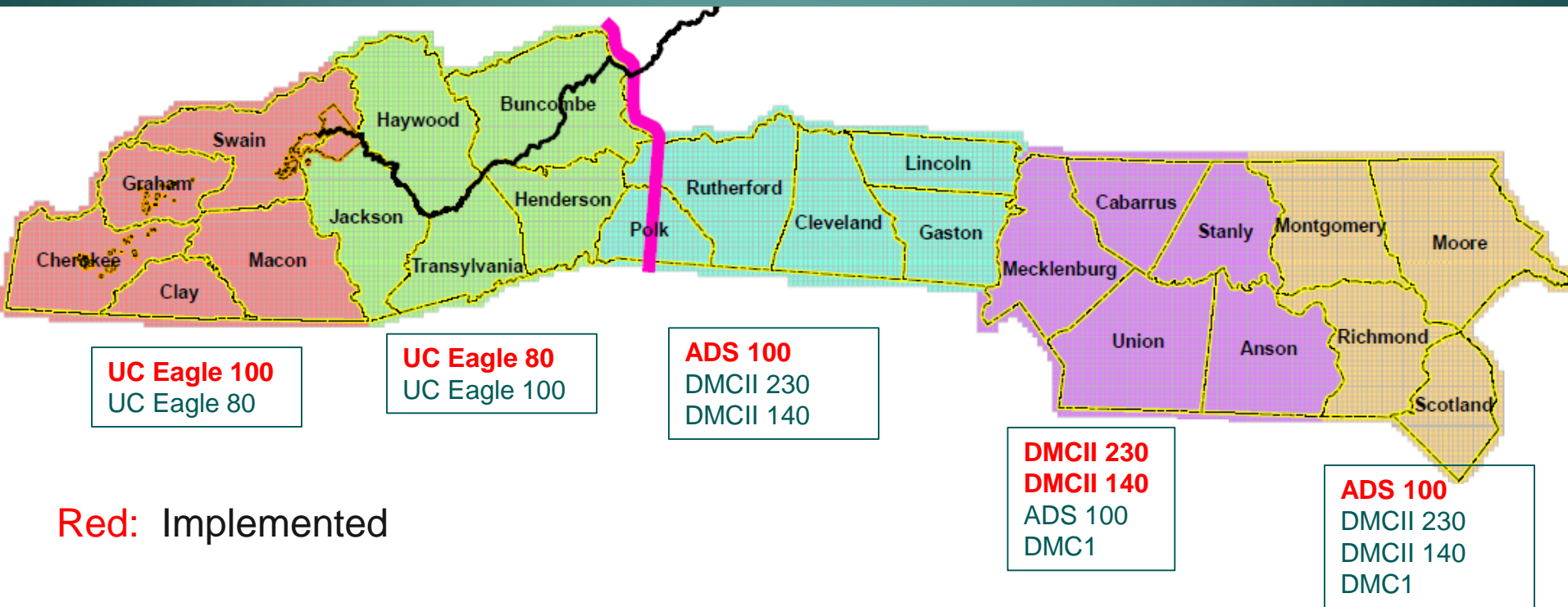
VendorID Atlas Geographic Data

[Zoom to](#)

Southern Piedmont & Mtns 2015 Status



Study Areas and Sensor Options



Questions?

Tim Johnson
CGIA Director
919.754.6588

tim.johnson@nc.gov

Darrin Smith
Technical Project Manager
919.754.6589

darrin.smith@nc.gov

www.ncgicc.org
www.nconemap.com

