

# Statewide Orthoimagery Program

Northern Piedmont & Mountains  
2022

Southern Piedmont & Mountains  
2023

Ben Shelton  
Program Manager

*October 11, 2022*

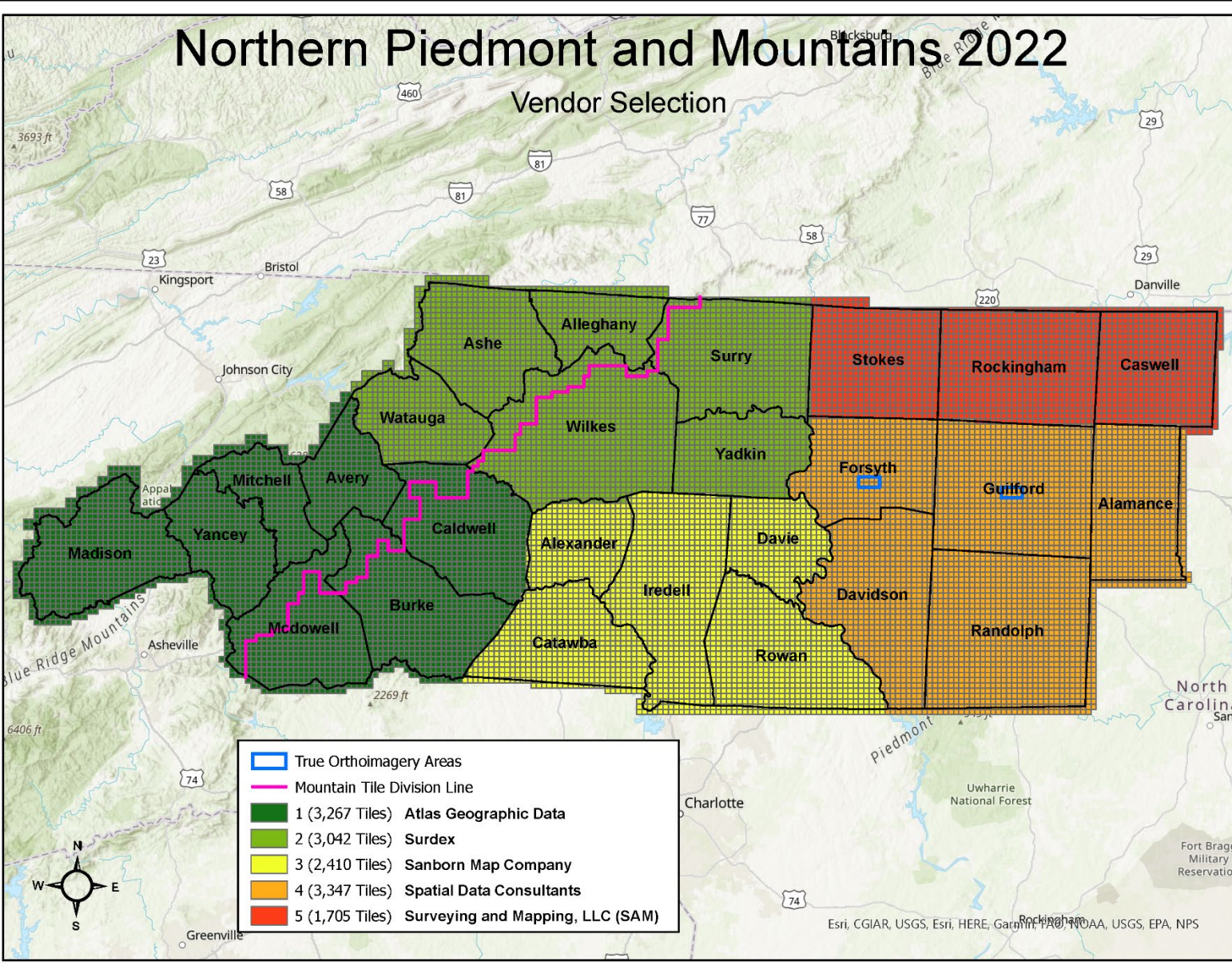




# 2022 Northern Piedmont & Mountains

## Northern Piedmont and Mountains 2022

Vendor Selection



	True Orthoimagery Areas
	Mountain Tile Division Line
	1 (3,267 Tiles) Atlas Geographic Data
	2 (3,042 Tiles) Surdex
	3 (2,410 Tiles) Sanborn Map Company
	4 (3,347 Tiles) Spatial Data Consultants
	5 (1,705 Tiles) Surveying and Mapping, LLC (SAM)

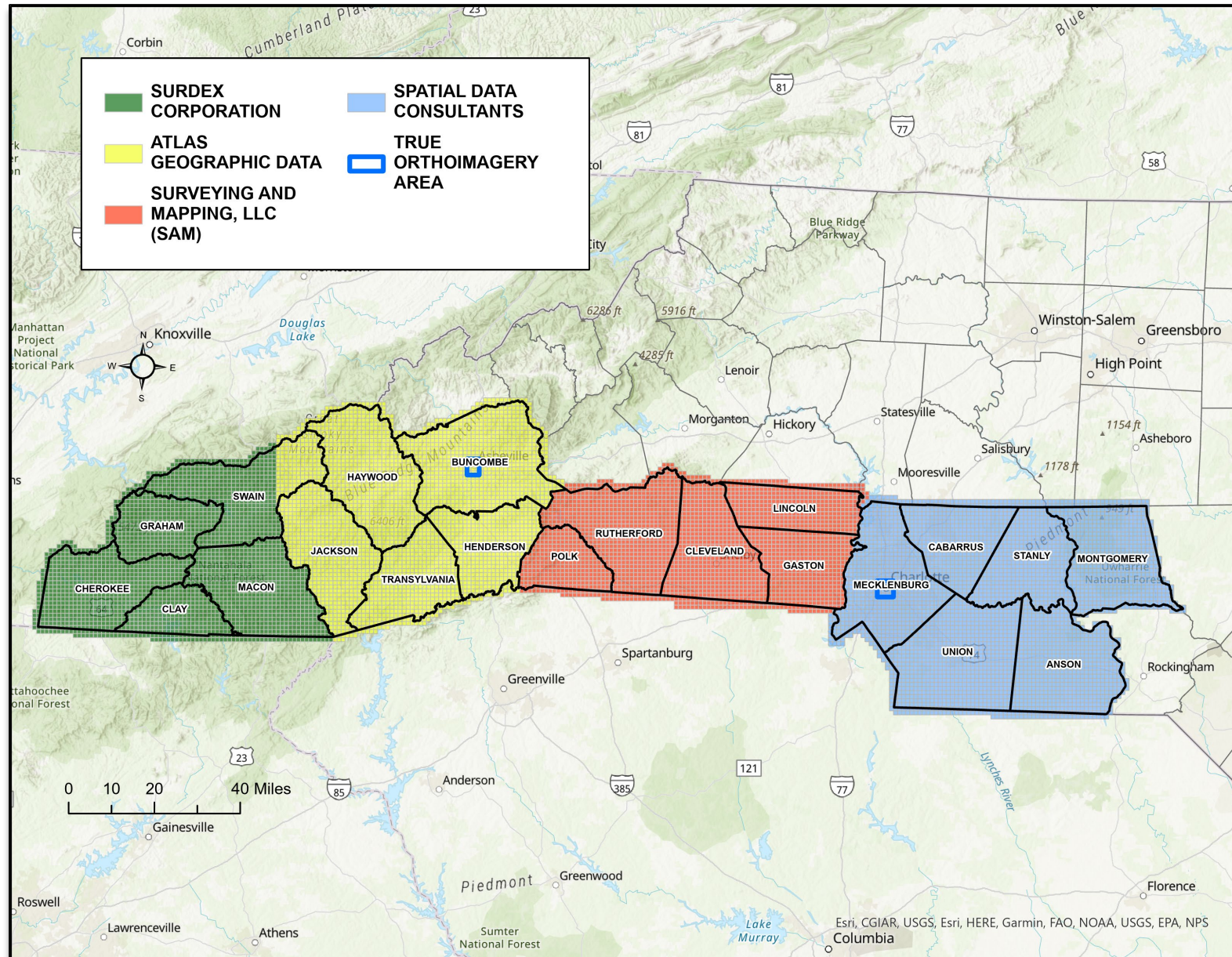
- 26 counties
- 12,349 Square Miles
- 25% of Project Area considered 'Mountain Acquisition'
- True Orthoimagery for Greensboro & Winston-Salem
- 4-Band Ortho Products continuing to be developed for this phase



# 2022 Project Timeline



# 2023 Southern Piedmont & Mountains



- 21 counties
- 10,397 square miles
- 50% of Project Area considered 'Mountain Acquisition'
- True Orthoimagery for Asheville & Charlotte
- 4-Band Ortho Products continuing to be developed for this phase to complete entire state of CIR



# 2023 Project Timeline



# NC OneMap & AWS

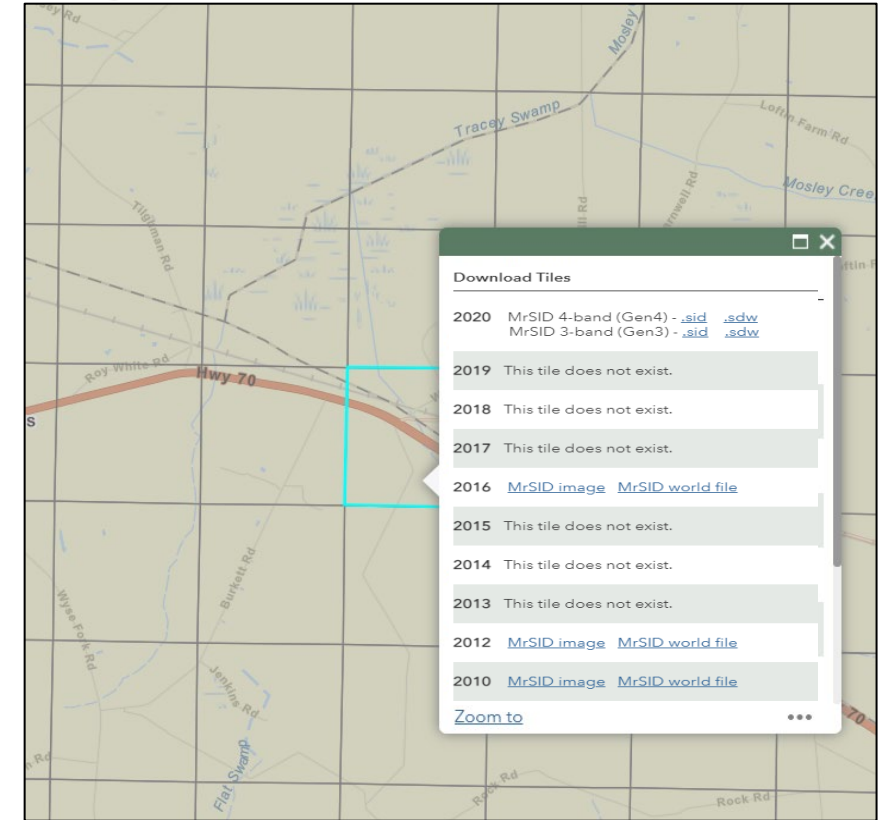
## NC OneMap Imagery Downloads

- <https://www.nconemap.gov/pages/imagery>
- **Single tile, 20:1 Compressed:**
  - 4-band Gen4 MrSID AND
  - 3-band Gen3 MrSID Tiles
- **Single file, 50:1 Compressed 4-band Gen4 MrSID**
- **Previous Years', Single File 50:1 County Mosaics**
- **Single tile, Cloud Optimized GeoTIFF (COG)**
  - Will be used to host Image Services for all years and Orthoimagery\_Latest

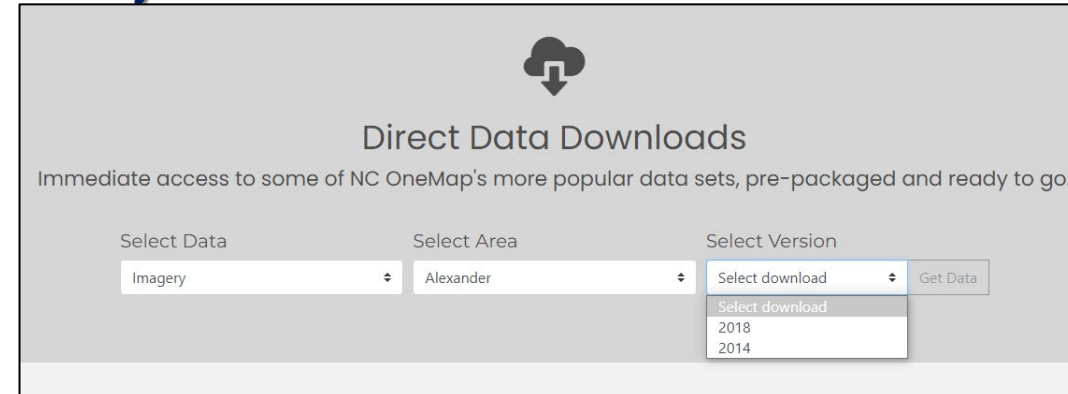
Presentation on COGs: <https://youtu.be/lx-4L2dRmRg>

- **New service coming to support analytics capabilities**
  - Orthoimagery\_latest service has JPG compression applied and not suitable for analytics

## Single Tile Download



## County-wide Mosaic Download



# Questions?

Ben Shelton

919.754.6377

[Ben.Shelton@nc.gov](mailto:Ben.Shelton@nc.gov)

<https://www.nconemap.gov/pages/imagery>

