

# Statewide Orthoimagery Program

Coastal 2020  
Eastern Piedmont 2021

Ben Shelton  
Program Manager

*January 20, 2021*



# CO20 Project Area

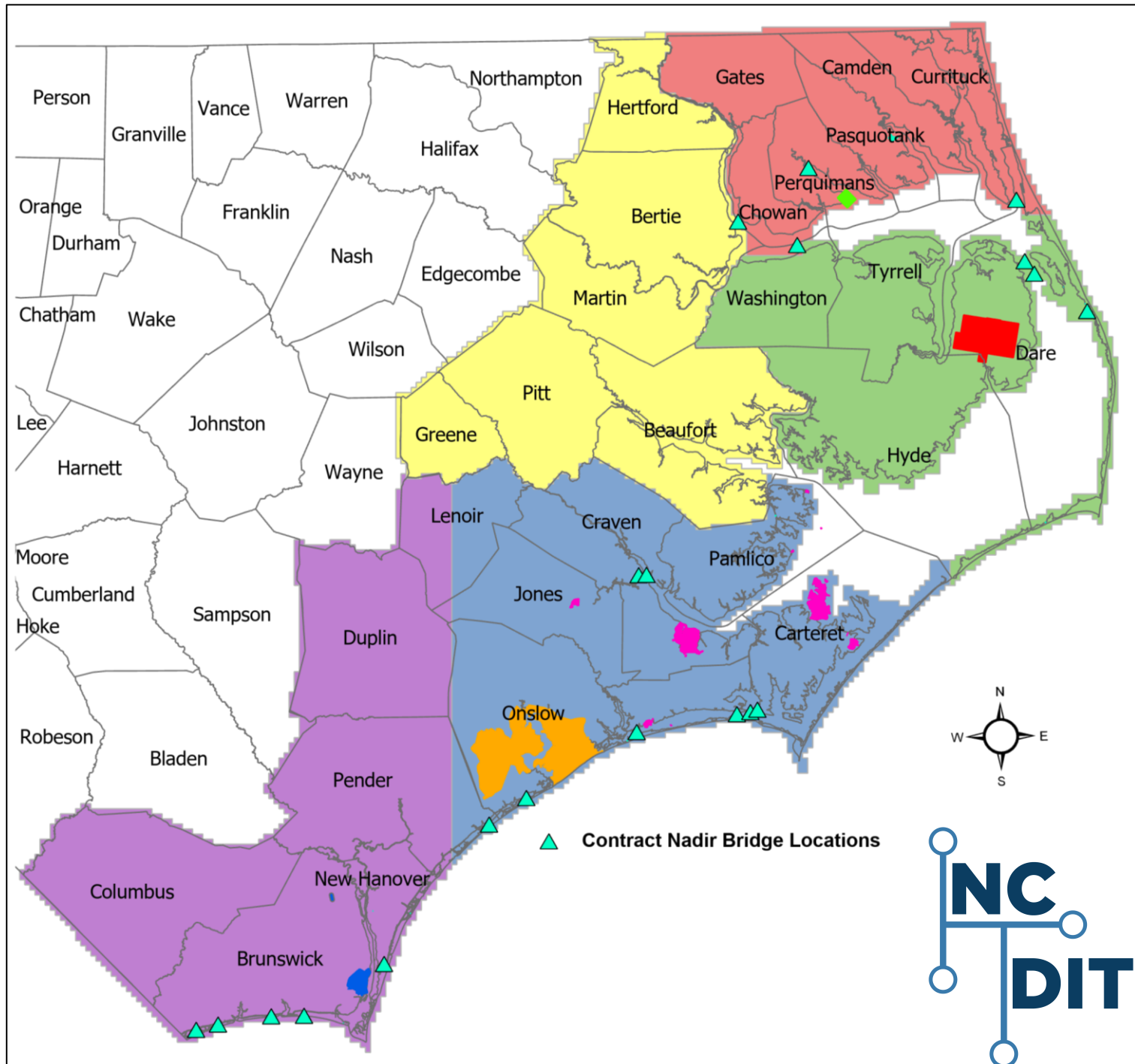
- 27 counties
- 15,678 square miles
- 17,483 tiles (5,000' by 5,000')
- Nadir Orthoimagery AOI:
  - Wilmington
  - Greenville
  - 18 major bridges

- Coordination with Military Operations:  
**Military Boundaries**

- Harvey Point
- US Coast Guard Base Elizabeth City
- USAF Dare Bombing Range
- USMCB Camp Lejeune
- USMCAS Cherry Point
- US Army Military Ocean Terminal Sunny Point

**Study Area**

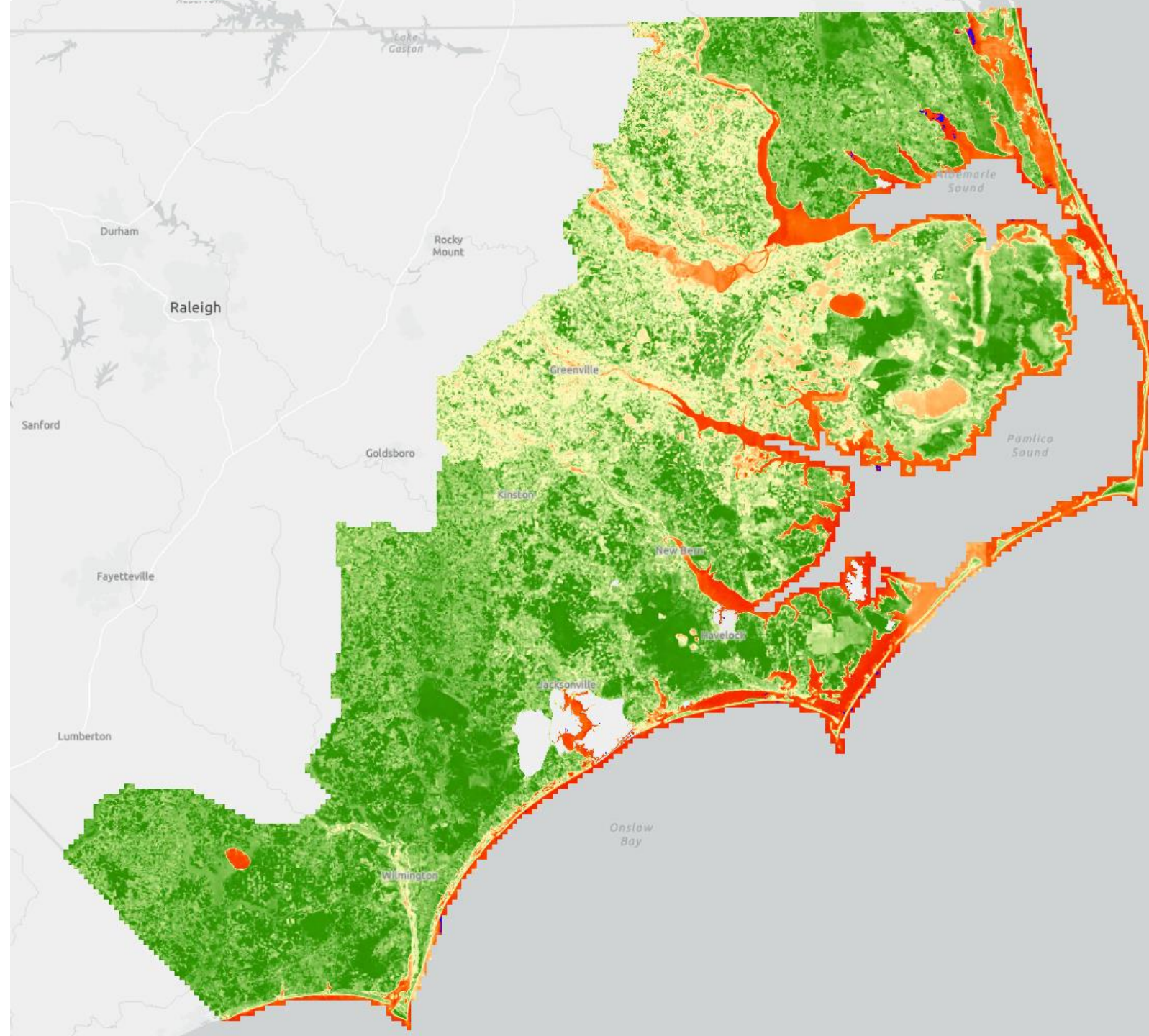
- SA1 - Quantum Spatial
- SA2 - Surdex Corporation
- SA3 - Sanborn Map Company
- SA4 - Atlas Geographic Data
- SA5 - Spatial Data Consultants



# Coastal 2020 Final Products

## NC OneMap Imagery Services

- <https://services.nconemap.gov/secure/rest/services>

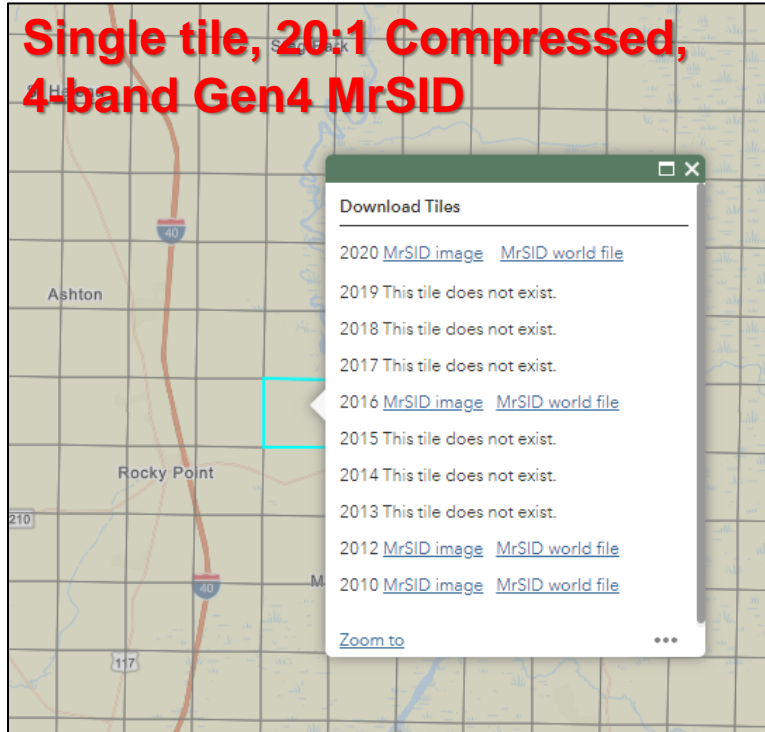


# Coastal 2020 Final Products

## NC OneMap Imagery Downloads

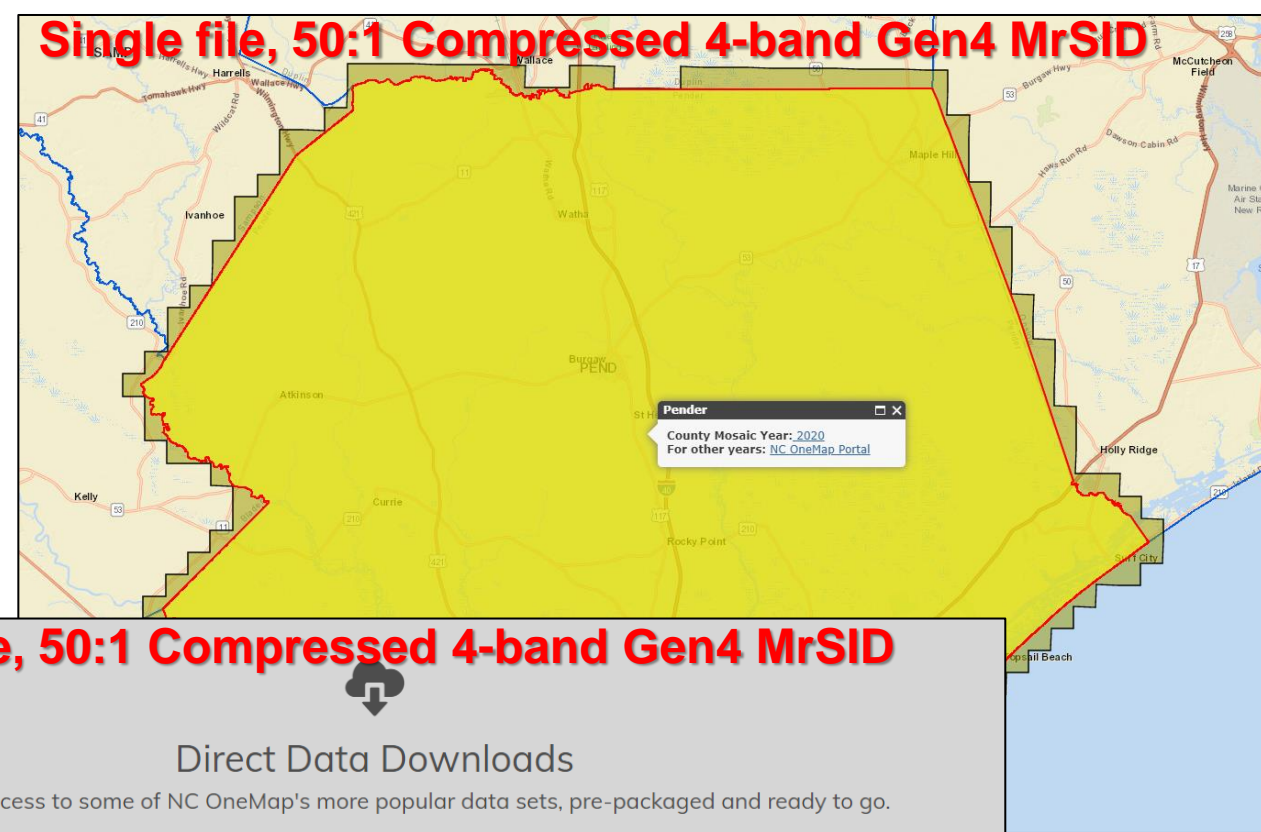
- <https://www.nconemap.gov/pages/imagery>

### Single tile, 20:1 Compressed, 4-band Gen4 MrSID

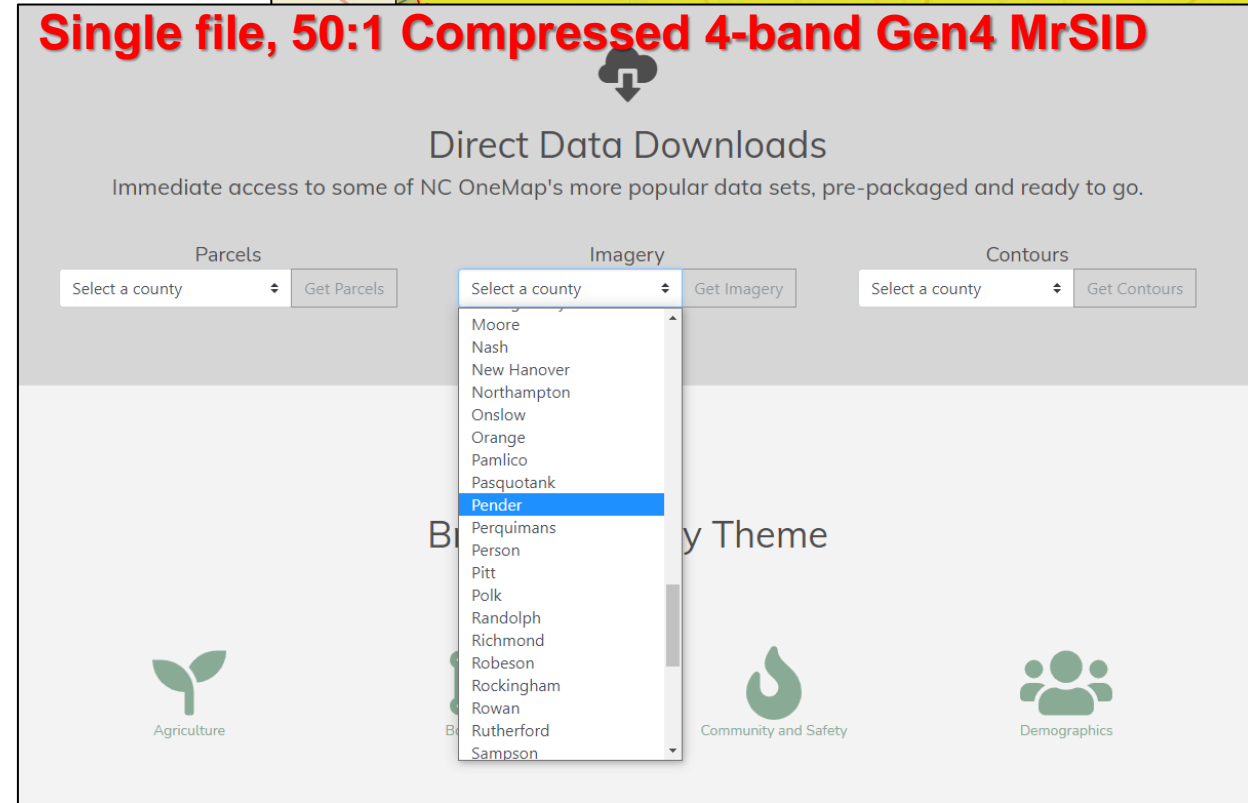


- Users can also download multiple SID tiles using Image Service in ArcGIS
  - Select tiles in map with Select tool – right-click layer and go to Data>Download Raster

### Single file, 50:1 Compressed 4-band Gen4 MrSID

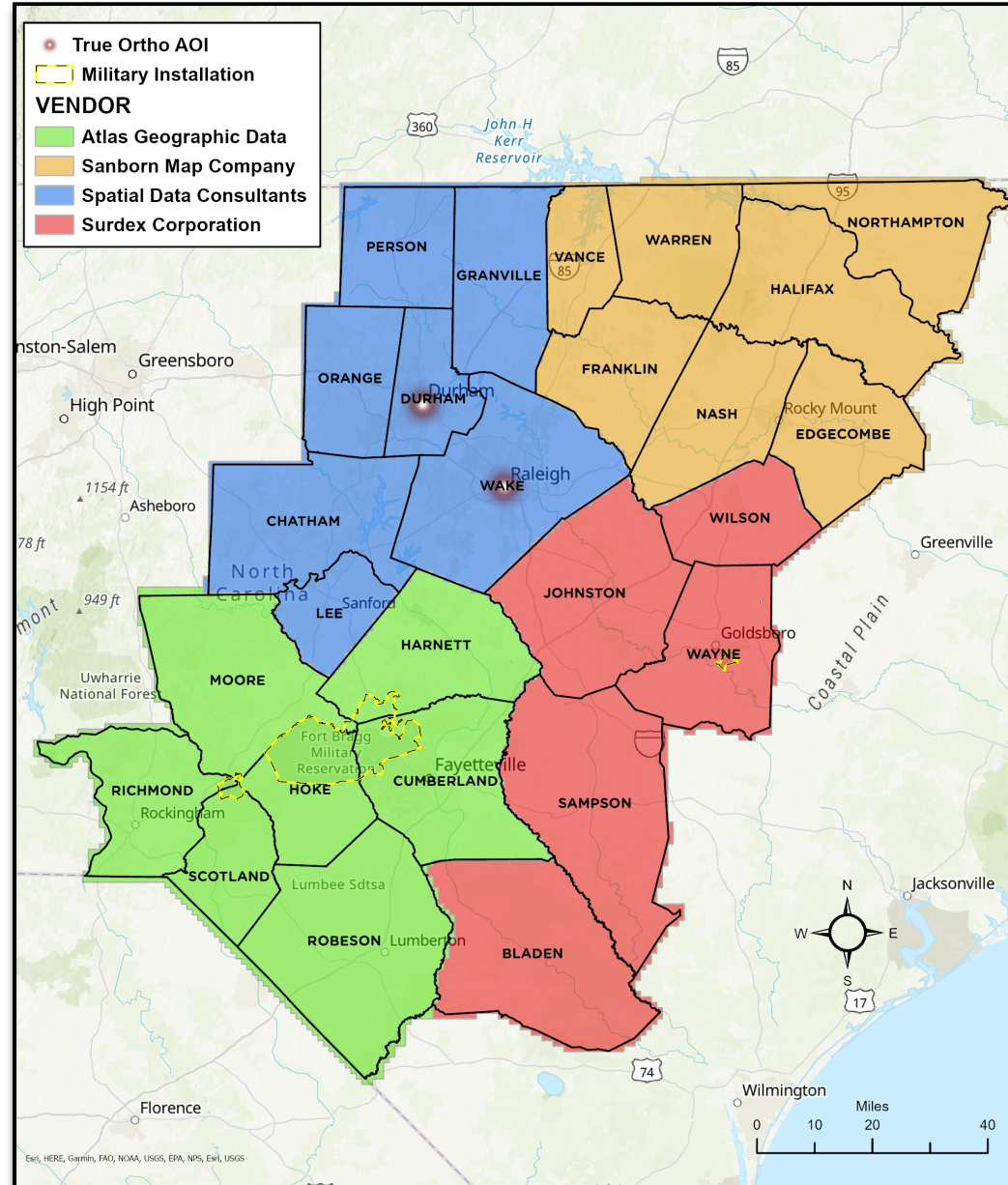


### Single file, 50:1 Compressed 4-band Gen4 MrSID



# 2021 Eastern Piedmont

- 26 counties
- 15,141 square miles
- 16,885 tiles (5,000' by 5,000')
  
- True Orthoimagery AOI:
  - Durham
  - Raleigh
  
- Coordination with Military Operations:
  - Fort Bragg
  - Camp Mackall
  - Seymour Johnson AFB



# CO20 Project Timeline



# Questions?

Ben Shelton

919.754.6377

[Ben.Shelton@nc.gov](mailto:Ben.Shelton@nc.gov)

<https://www.nconemap.gov/pages/imagery>

