

Statewide Orthoimagery Program

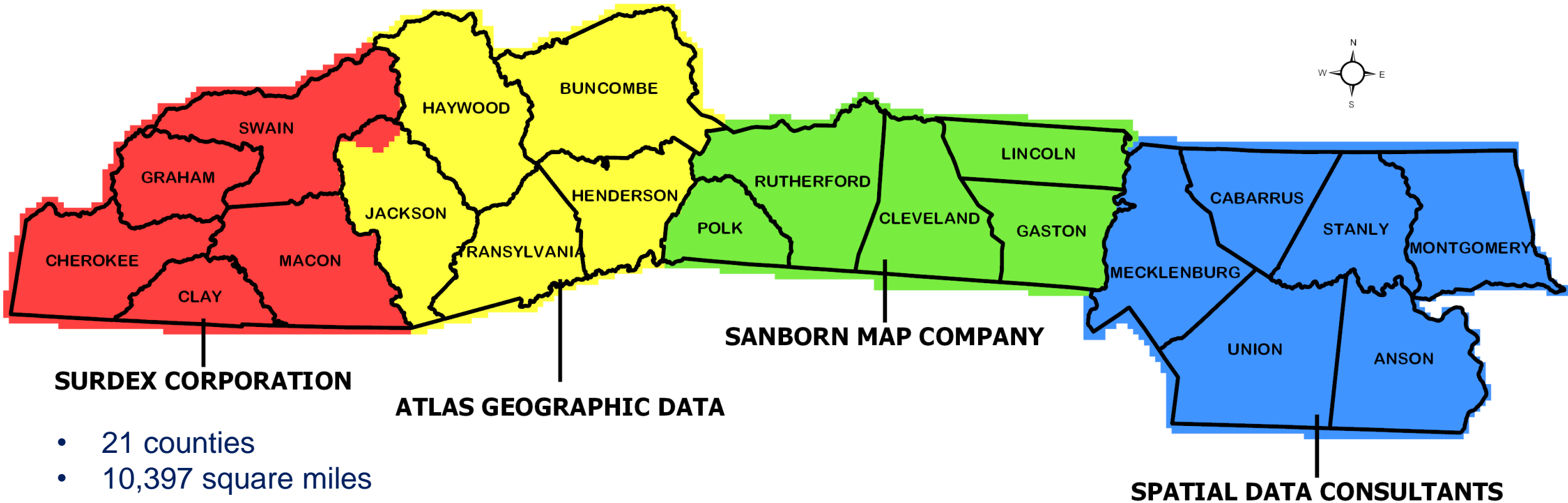
Southern Piedmont & Mountains
2019
Coastal 2020

Ben Shelton
Program Manager

September 20, 2019



Southern Piedmont and Mountains 2019

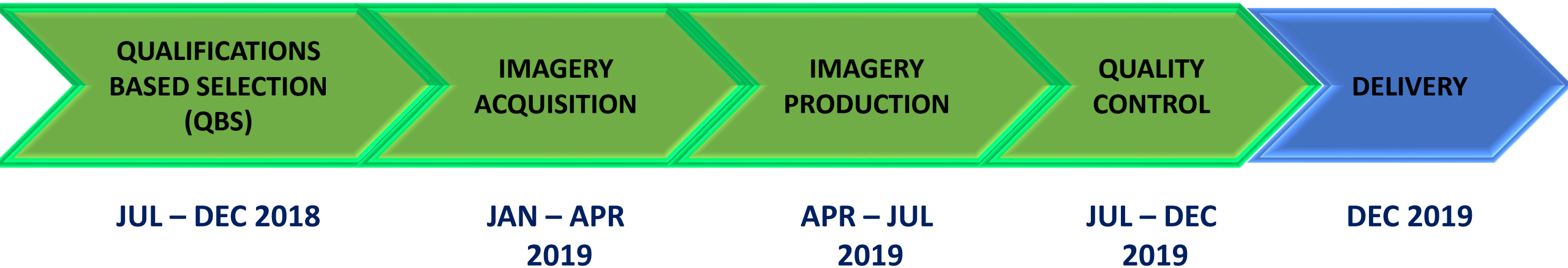


- 21 counties
- 10,397 square miles
- 50% of project are considered Mountain Tiles
- True Orthoimagery AOI:
 - Charlotte
 - Asheville

Southern Piedmont and Mountains 2019

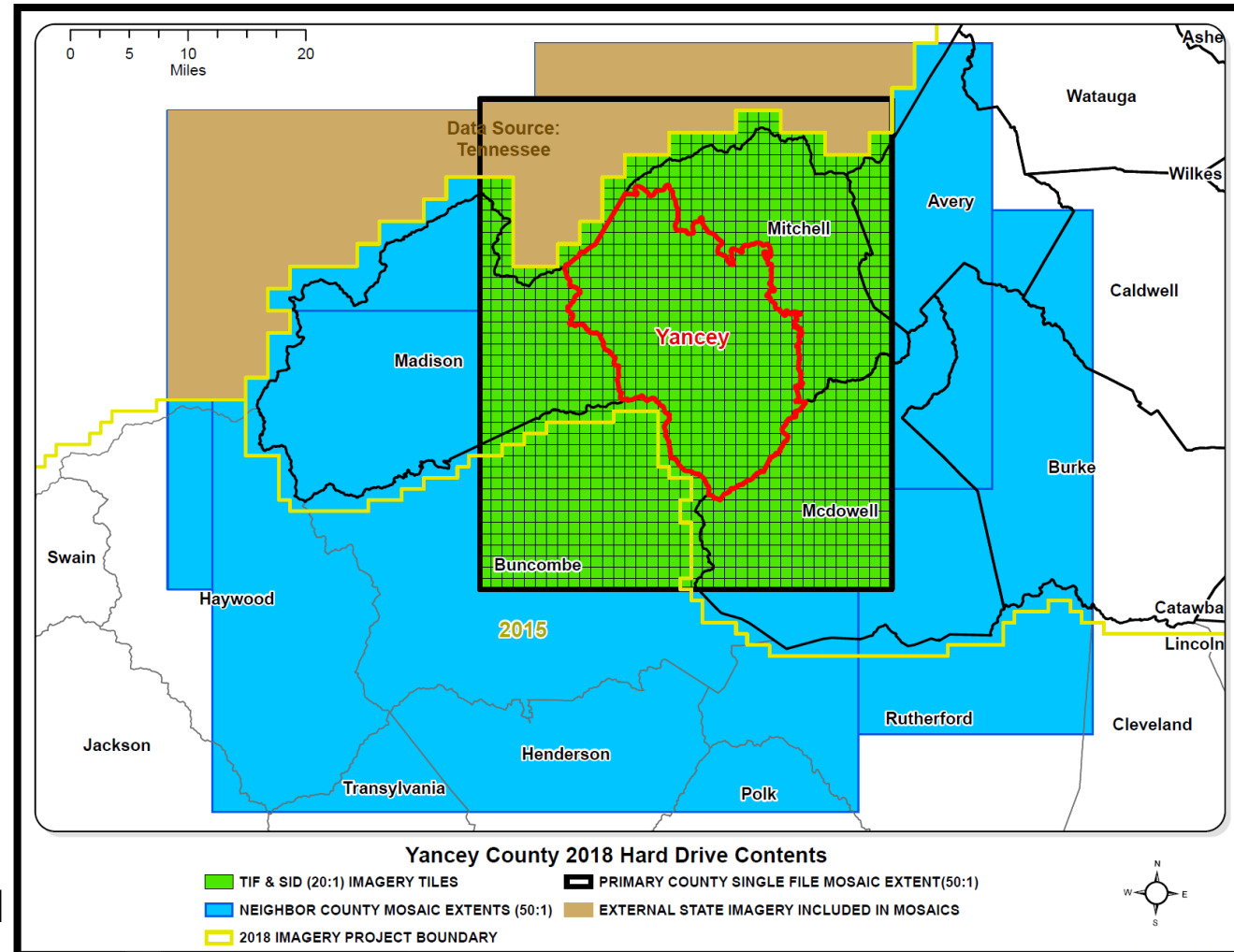


SPM19 Project Timeline



Orthoimagery Deliverables –

- Full Resolution TIFF Tiles (5000' by 5000') –
 - 300mb per tile
 - 3-Band (RGB)
- 20:1 Compressed MrSID Tiles (5000' by 5000') –
 - 15mb per tile
 - Generation 3 SID
 - Visually Lossless
- 50:1 Compressed MrSID Mosaic Single File (County 7-mile Rectangle)
 - 10-20gb depending on county
 - Generation 3 SID
 - Some visual degradation
- NC OneMap Image Services
 - Single year service
 - Orthoimagery_latest
 - Orthoimagery_all
 - <https://www.nconemap.gov/> - NEW REDESIGN

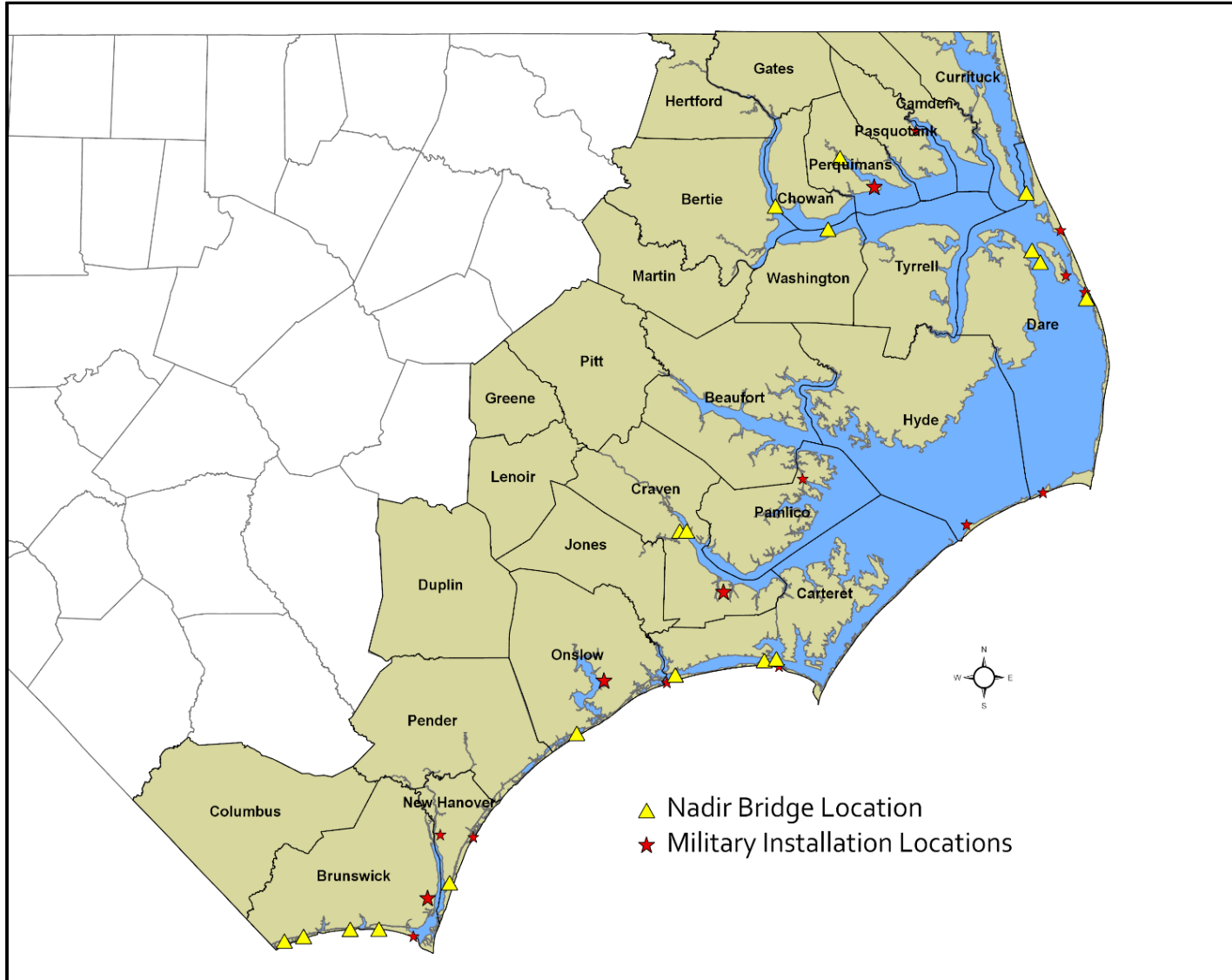


CO20 Project Timeline



CO20 Project Area

2020 Coastal Orthoimagery



Vendors (pending contract negotiations):

- Atlas Geographic Data
 - Quantum Spatial
 - Sanborn Map Company
 - Spatial Data Consultants
 - Surdex Corporation
-
- 27 counties
 - 15,678 square miles
 - 17,483 tiles (5,000' by 5,000')
-
- True Orthoimagery AOI:
 - Wilmington
-
- Nadir acquisition of 18 major bridges
-
- Coordination with Military Operations:
 - Air Force – Dare Bombing Range
 - Army - MOTSU
 - Coast Guard
 - Marine Corps –
 - MCB Camp Lejeune
 - MCAS Cherry Point
 - MCAS New River



Orthoimagery Deliverables – 2020 and beyond

- Full Resolution TIFF Tiles (5000' by 5000') –
 - 400mb per tile
 - **4-Band (RGBIR)**
- 20:1 Compressed MrSID Tiles (5000' by 5000') –
 - Generation 3 MrSID
 - **3-Band RGB**
- 20:1 Compressed MrSID Tiles (5000' by 5000') –
 - Generation 4 MrSID
 - **4-Band RGBIR**
- 50:1 Compressed MrSID Mosaic Single File (County 7-mile Rectangle)
 - **3-Band RGB**
 - **3-Band False-color IR**
- NC OneMap Image Services
 - Single year service – **4-Band RGBIR**
 - Orthoimagery_latest – TBD
 - Orthoimagery_all – TBD



Questions?

Ben Shelton

919.754.6377

Ben.Shelton@nc.gov

<https://www.nconemap.gov/pages/imagery>

