

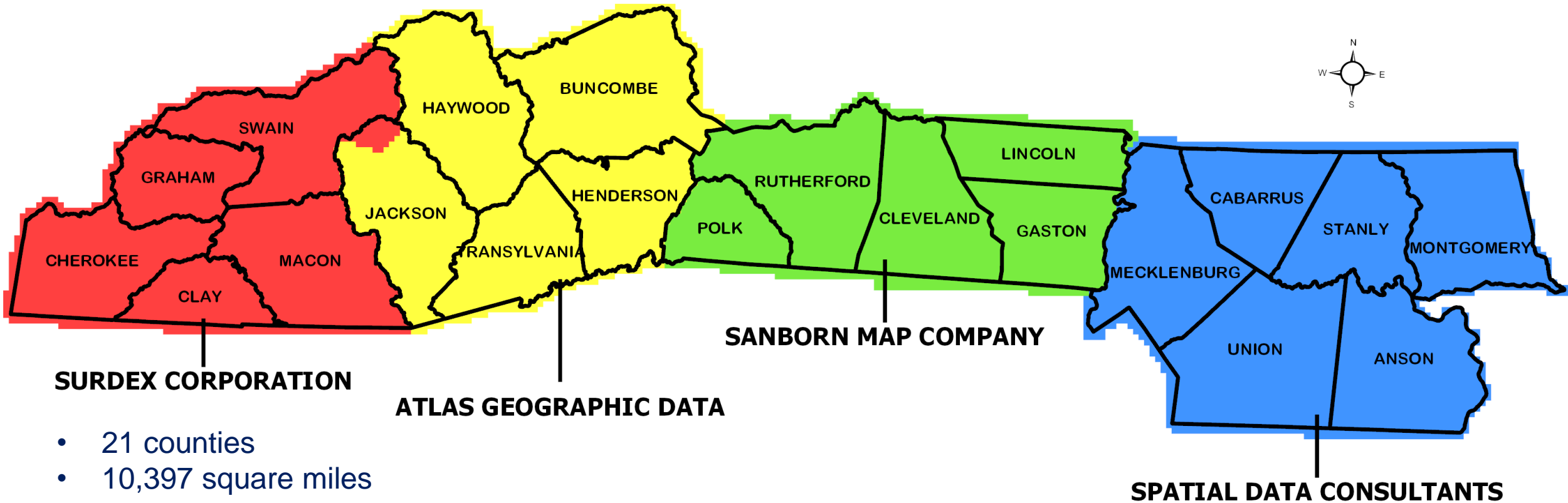
Statewide Orthoimagery Program

Southern Piedmont and Mountains
2019
Coastal
2020

July 15, 2019

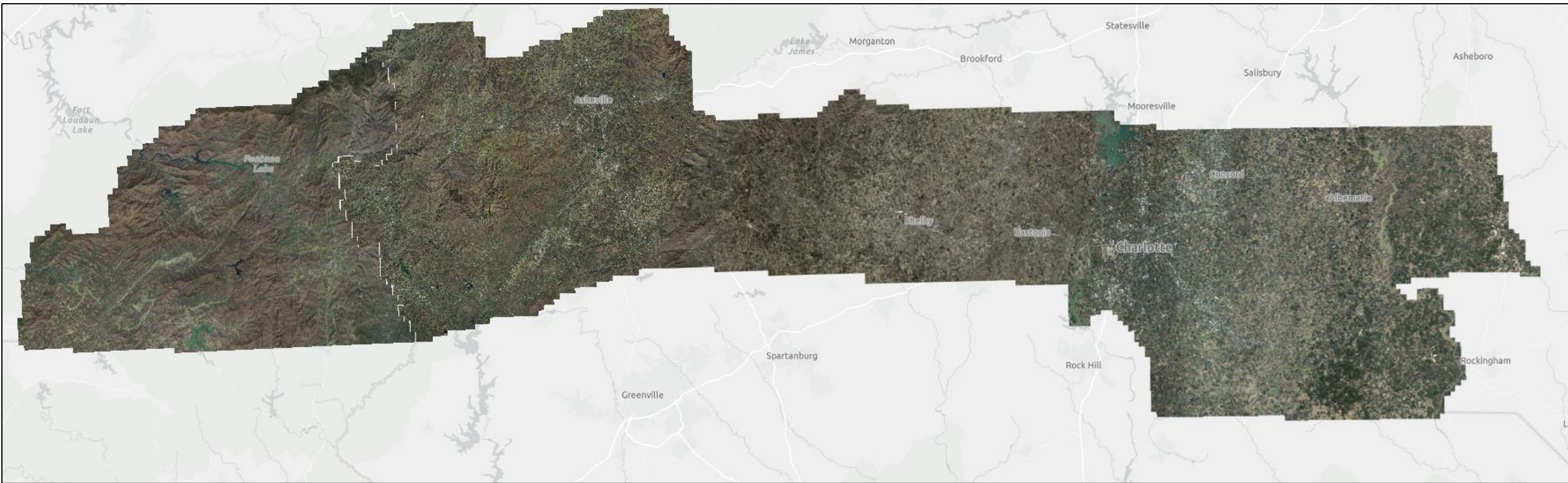


Southern Piedmont and Mountains 2019

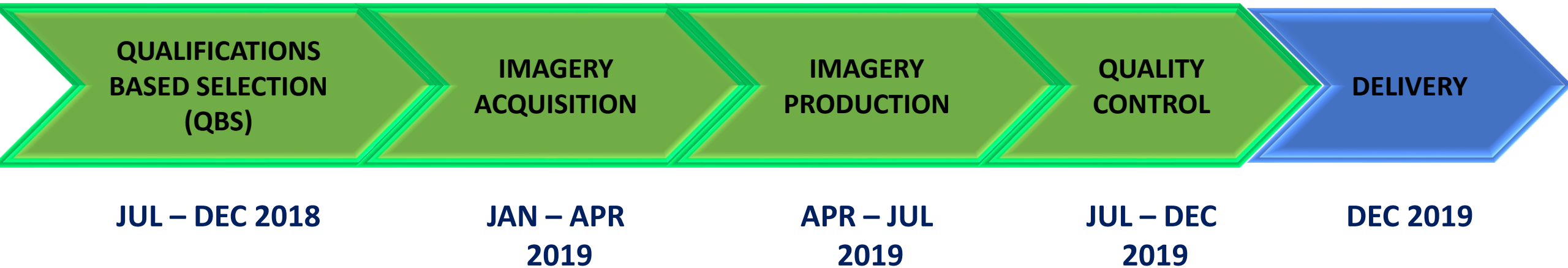


- 21 counties
- 10,397 square miles
- 50% of project are considered Mountain Tiles
- True Orthoimagery AOI:
 - Charlotte
 - Asheville

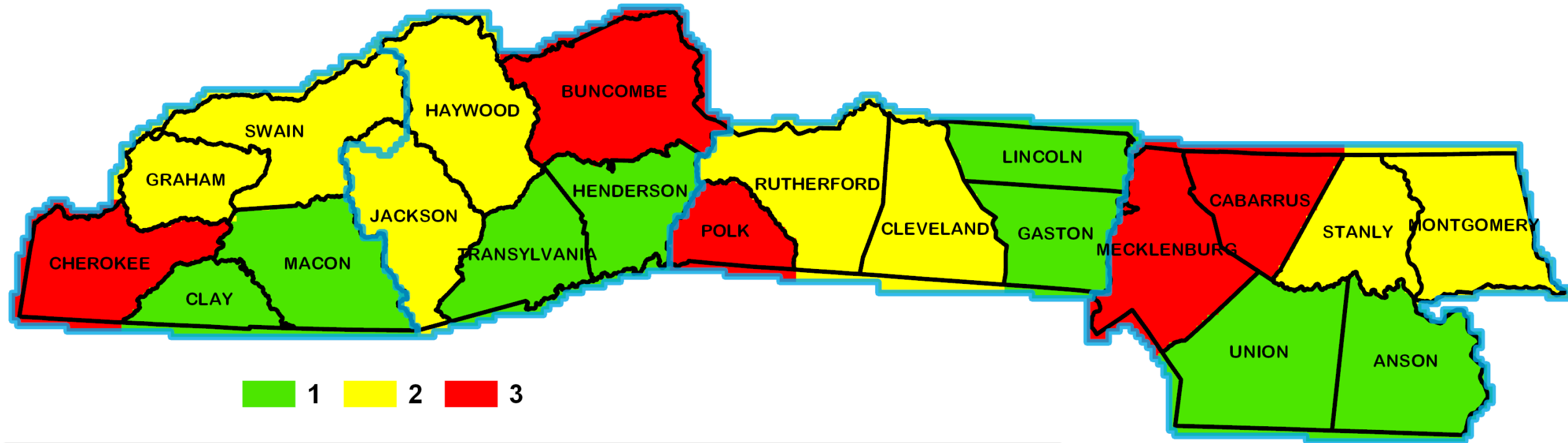
Southern Piedmont and Mountains 2019



SPM19 Project Timeline



Delivery Order



1 2 3

2019 Orthoimagery Review Schedule

County	County Data Review Start	County Data Review End	County	County Data Review Start	County Data Review End	County	County Data Review Start	County Data Review End
Henderson	29-Jul	23-Aug	Montgomery	12-Aug	6-Sep	Cherokee	26-Aug	20-Sep
Clay	29-Jul	23-Aug	Graham	12-Aug	6-Sep	Buncombe	26-Aug	20-Sep
Macon	29-Jul	23-Aug	Cleveland	12-Aug	6-Sep	Polk	26-Aug	20-Sep
Anson	29-Jul	23-Aug	Jackson	12-Aug	6-Sep	Cabarrus	26-Aug	20-Sep
Transylvania	29-Jul	23-Aug	Swain	12-Aug	6-Sep	Mecklenburg	26-Aug	20-Sep
Gaston	29-Jul	23-Aug	Stanly	12-Aug	6-Sep			
Lincoln	29-Jul	23-Aug	Rutherford	12-Aug	6-Sep			
Union	29-Jul	23-Aug	Haywood	12-Aug	6-Sep			



Approved Orthoimagery Program Cycle

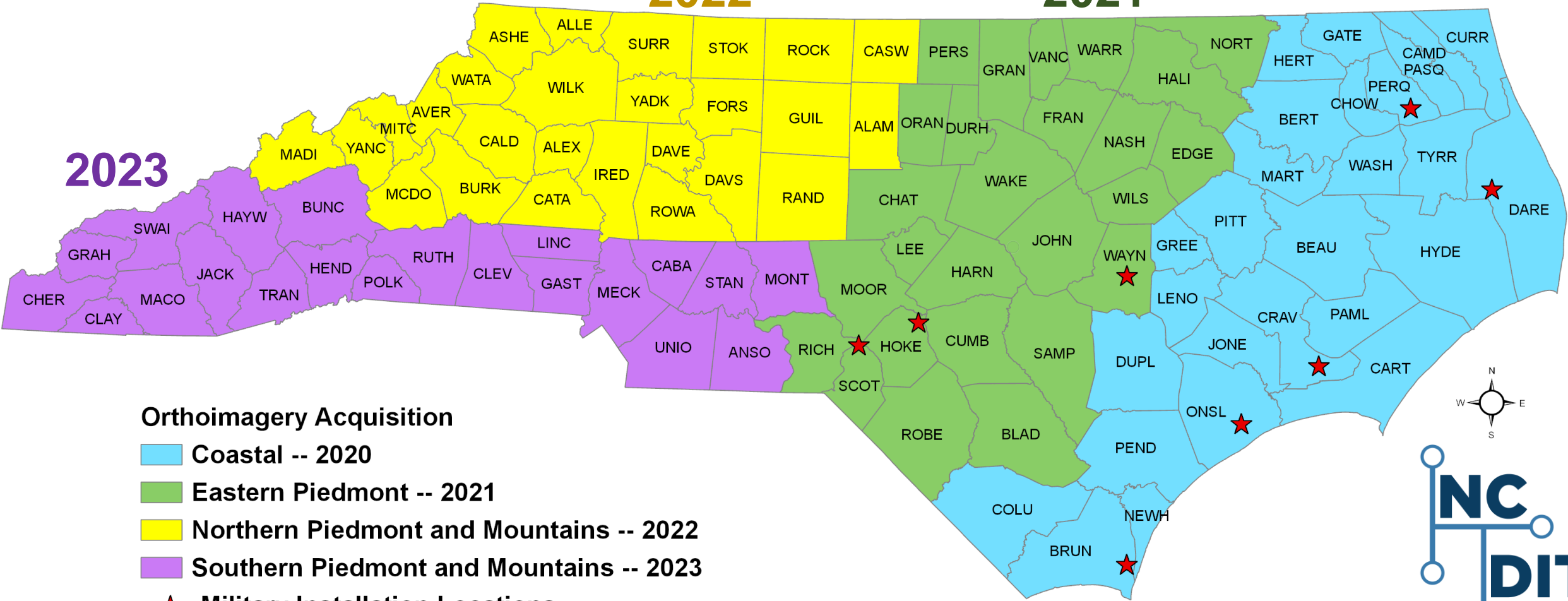
4-Year Cycle

2022

2021

2020

2023



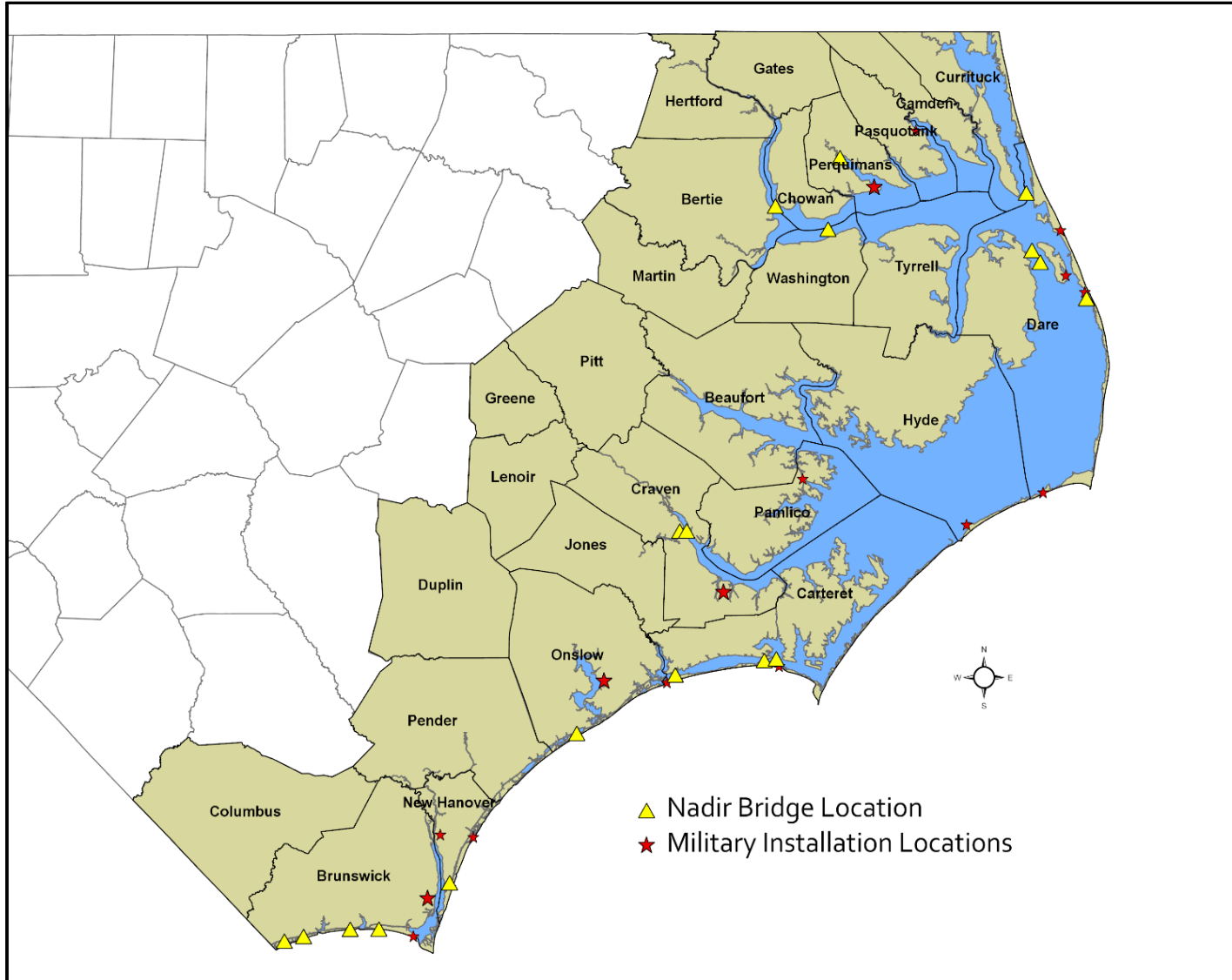
Orthoimagery Acquisition

- Coastal -- 2020
- Eastern Piedmont -- 2021
- Northern Piedmont and Mountains -- 2022
- Southern Piedmont and Mountains -- 2023
- ★ Military Installation Locations



Approved Orthoimagery Program Cycle

2020 Coastal Orthoimagery



- 27 counties
- 15,678 square miles
- 17,483 tiles (5,000' by 5,000')
- True Orthoimagery AOI:
 - Wilmington
- Nadir acquisition of 18 major bridges
- Coordination with Military Operations:
 - Air Force – Dare Bombing Range
 - Army - MOTSU
 - Coast Guard
 - Marine Corps –
 - MCB Camp Lejeune
 - MCAS Cherry Point
 - MCAS New River



Approved Option 4-band imagery with Color Infrared



SPM19 Project Timeline



Questions?

Ben Shelton

919.754.6377

Ben.Shelton@nc.gov

www.nconemap.gov/orthoimagery.aspx

