

# Statewide Orthoimagery Program

Northern Piedmont and Mountains  
2018

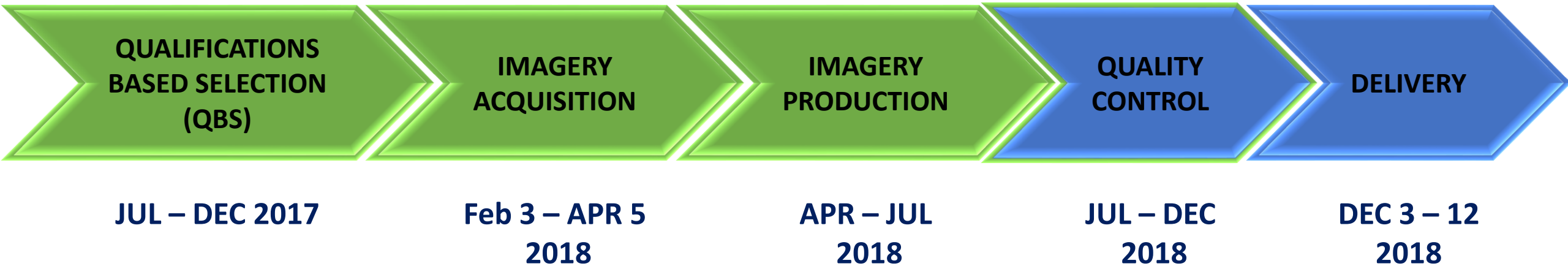
Southern Piedmont and Mountains  
2019

*October 10, 2018*



# Northern Piedmont and Mountains 2018

- 7/30 – 9/21: VOICE End-User Review
- 10/4 – 11/1: Drive delivery from contractors
- 10/4 – 12/3: SID Creation and drive assembly

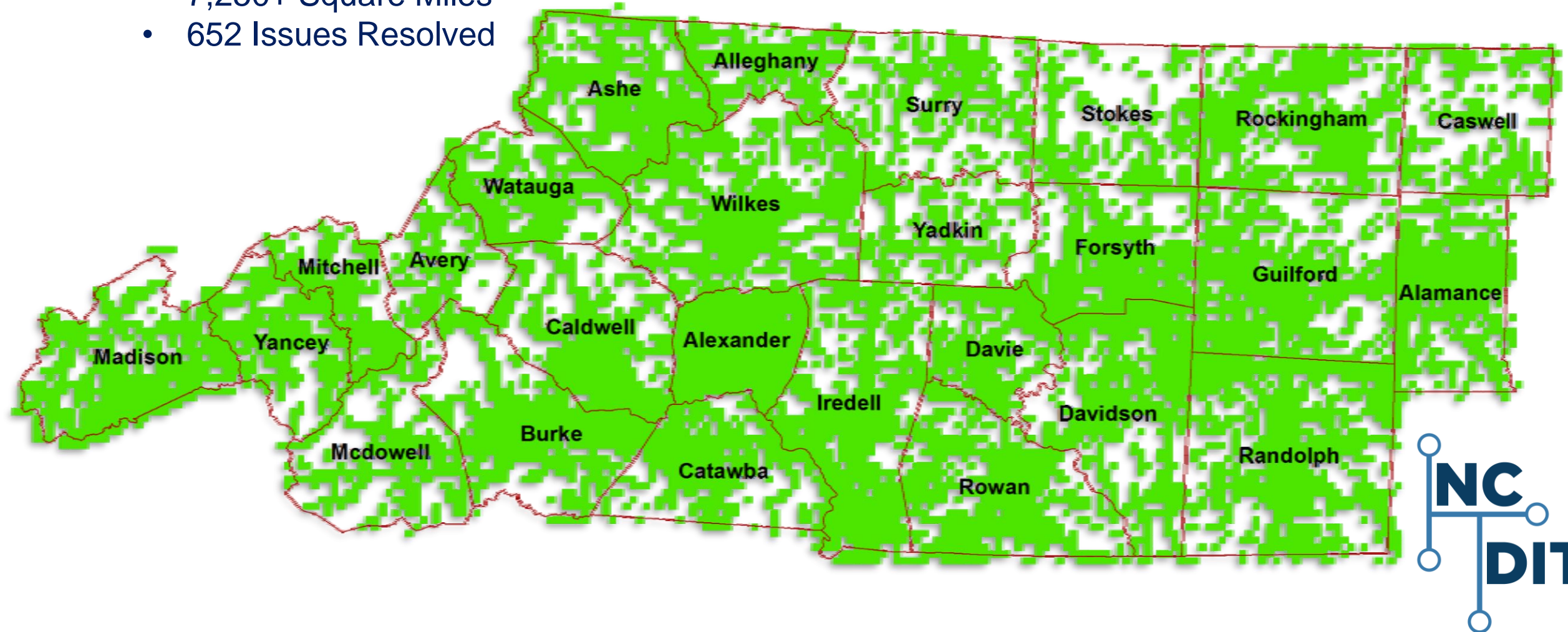


- 12/3 – 12/12: PSAP Deliveries
  - NC OneMap Image Service Created at time of deliveries



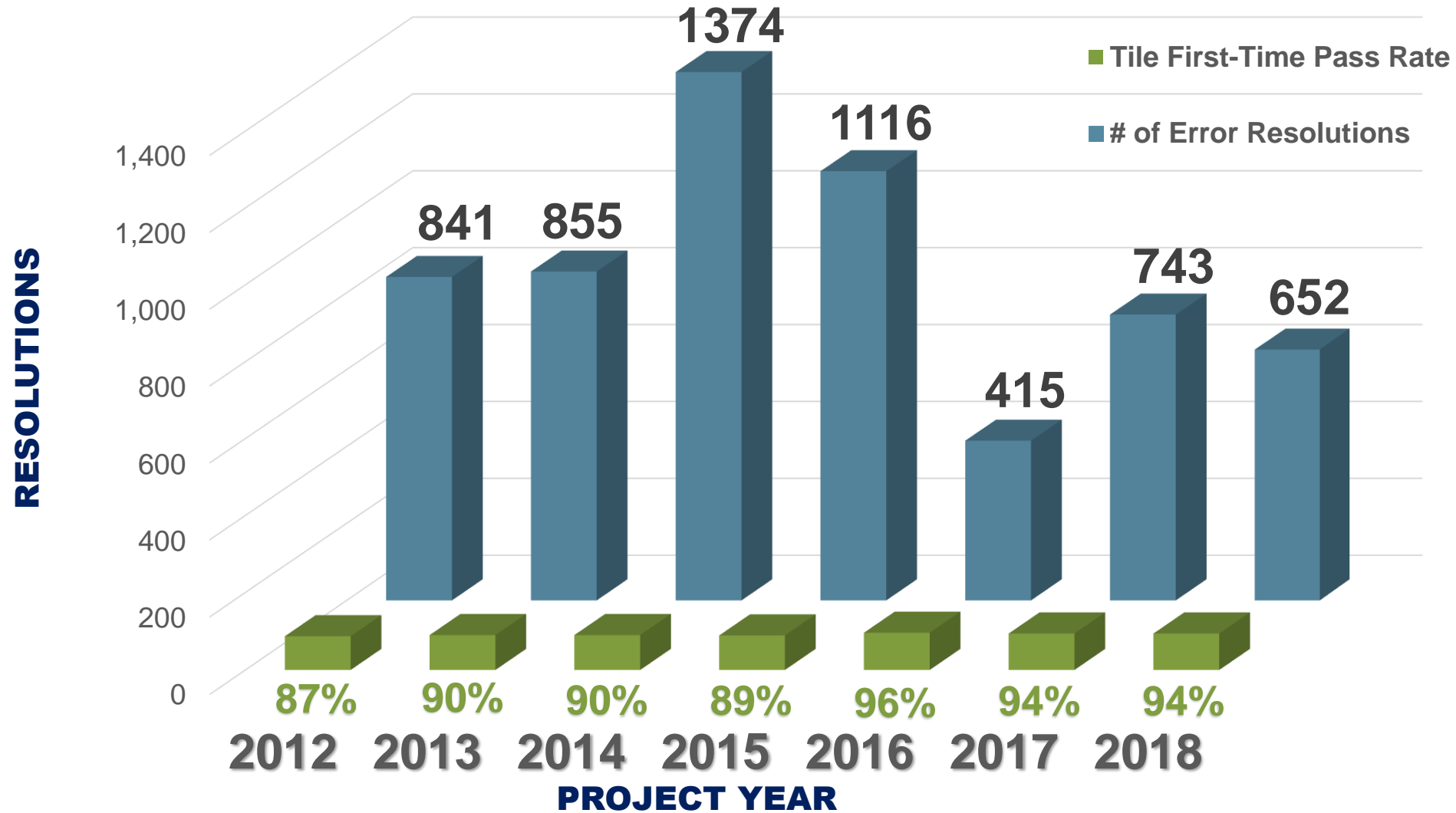
# Northern Piedmont and Mountains 2018

- VOICE End-User Review Complete
  - 59% Reviewed
  - 7,250+ Square Miles
  - 652 Issues Resolved



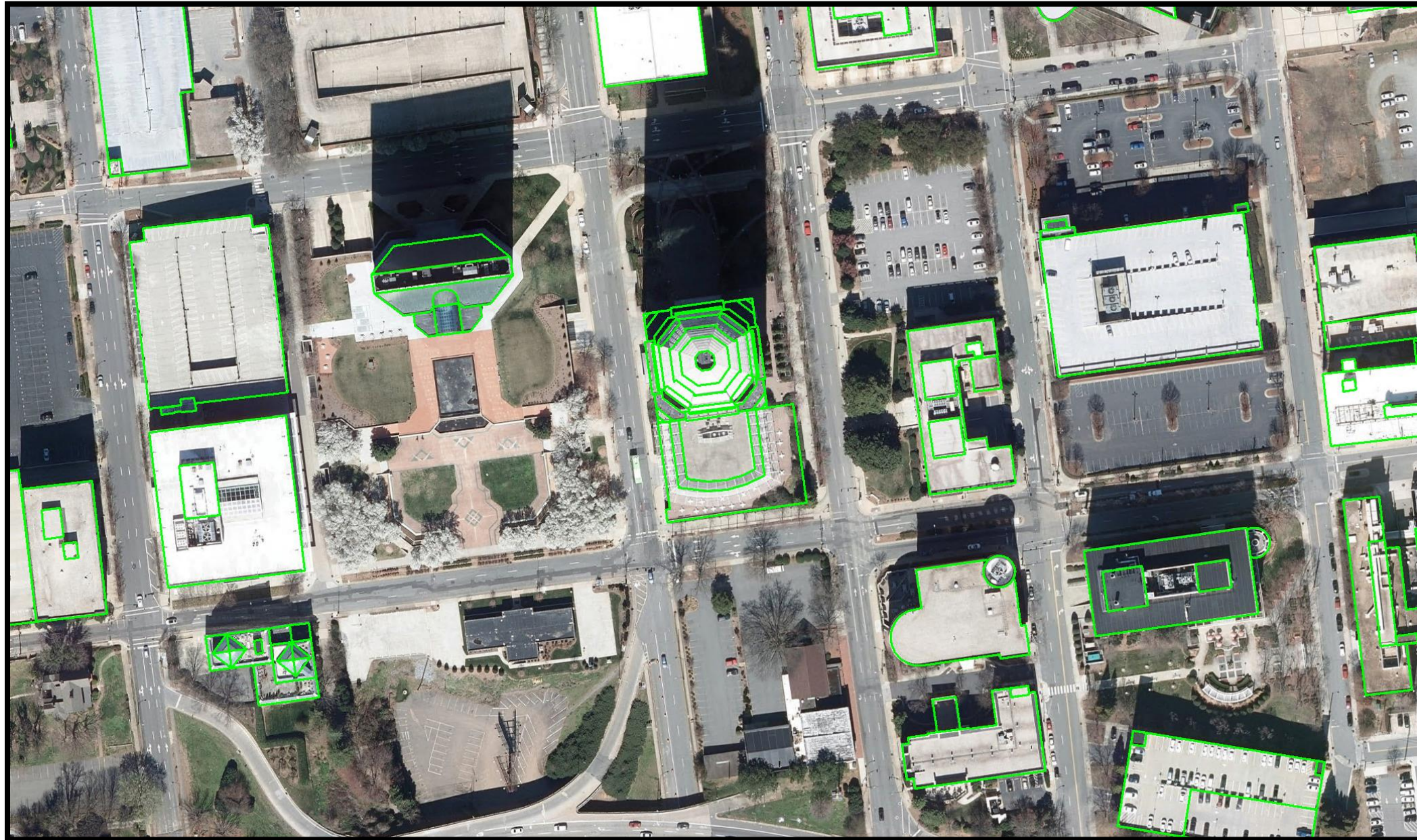
# Northern Piedmont and Mountains 2018

## VOICE Yearly Quality Control Statistics



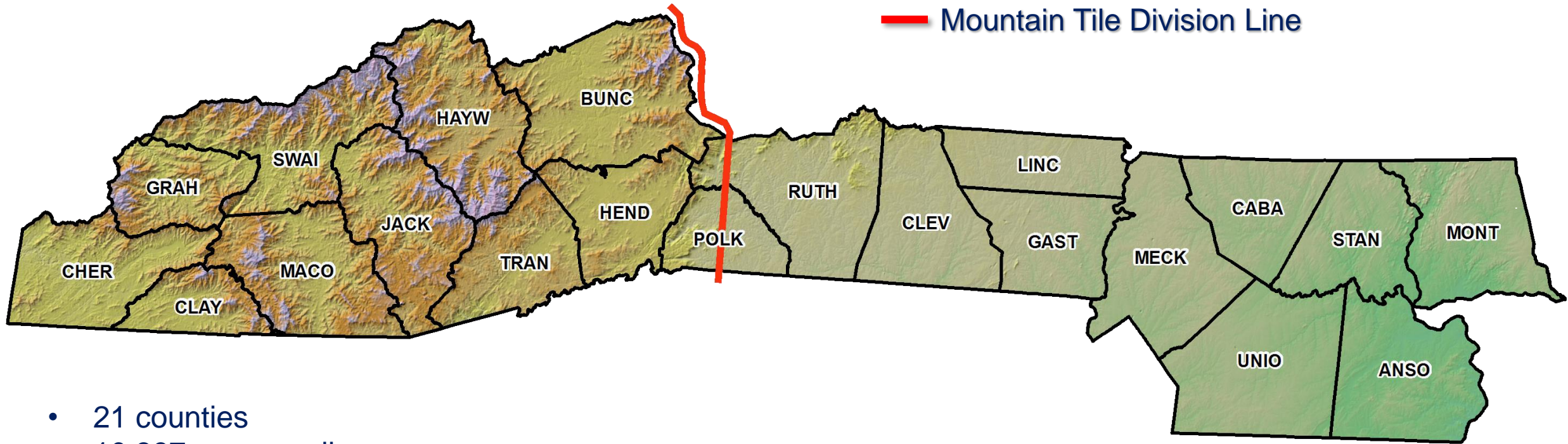


# NPM 2018 – True Ortho Deliverables



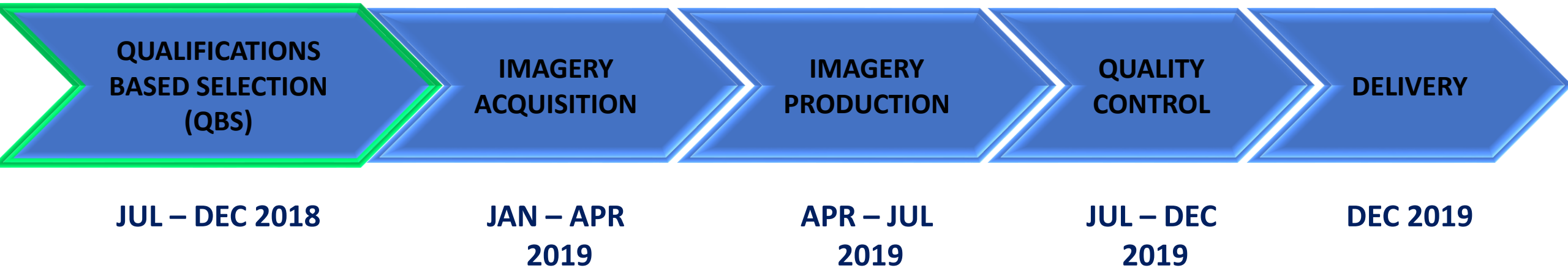


# Southern Piedmont and Mountains 2019



- 21 counties
- 10,397 square miles
- 50% of project are considered Mountain Tiles
- True Orthoimagery AOI:
  - Charlotte
  - Asheville

# Project Timeline



The selected firms are:

1. Atlas Geographic Data, Inc.
2. The Sanborn Map Company, Inc.
3. Spatial Data Consultants, Inc.
4. Surdex Corporation



# Ortho Program Website Updates

- <http://nconemap.gov/orthoimagery.aspx>

NC Orthoimagery Program

Overview 2012-2015 2016-2019 Imagery Discovery Cooperative Products NEWS

## Optional Cooperative Products

### Higher Resolution Imagery

Higher resolution orthoimagery allows for greater visible detail and increased capability for feature extraction. 3 inch imagery is a possible product that can be contracted by a local or county government and flown at the same time as the statewide acquisition season. Costs incurred would include costs associated with increased flight planning and image processing. However, total cost is substantially less than if the project was undertaken independently.

The example in the associated map displays a comparison between 3 inch imagery on the left to 6 inch imagery on the right. Use the swipe tool in the middle to compare the difference in resolution.

Use case examples for 3 inch orthoimagery:

- Utility Mapping
  - Manholes, poles, fire hydrants, and stormwater features
- Transportation Planning
  - Curb and edge of pavement delineation
  - Painted lines on pavement
  - Signage
- Urban Planning
  - Sidewalk delineation
  - Zoning
  - Site Planning
- 3D Modeling

Example 3 inch orthoimagery collected by local, county, or state government organizations as part of the statewide orthoimagery program:

- High Point
- Boone
- Jacksonville

### Planimetric Mapping


Planimetric data representing natural and man-made features can be derived from imagery collected during the NC 911 Board orthoimagery program using photogrammetry techniques for feature extraction. Depending on the resolution of the imagery, different features can be digitized in a 3D stereo environment:

6" Resolution Orthos:

- Building Footprints
- Roads
  - Street centerlines
  - Edge of Pavement
  - Curbs
  - Bridges

### Resolution Comparison

3 inch resolution on left. 6 inch resolution on right.



NC DIT

powered by esri

NCCGIA | State of North Carolina DOT, Esri, HERE, Garmin, INCREMENT P, USGS, EPA, USDA



# Questions?

Ben Shelton

919.754.6377

[Ben.Shelton@nc.gov](mailto:Ben.Shelton@nc.gov)

[www.nconemap.gov/orthoimagery.aspx](http://www.nconemap.gov/orthoimagery.aspx)

