

Statewide Orthoimagery Program

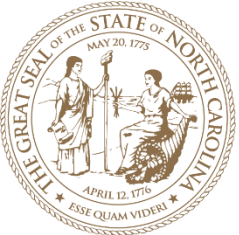
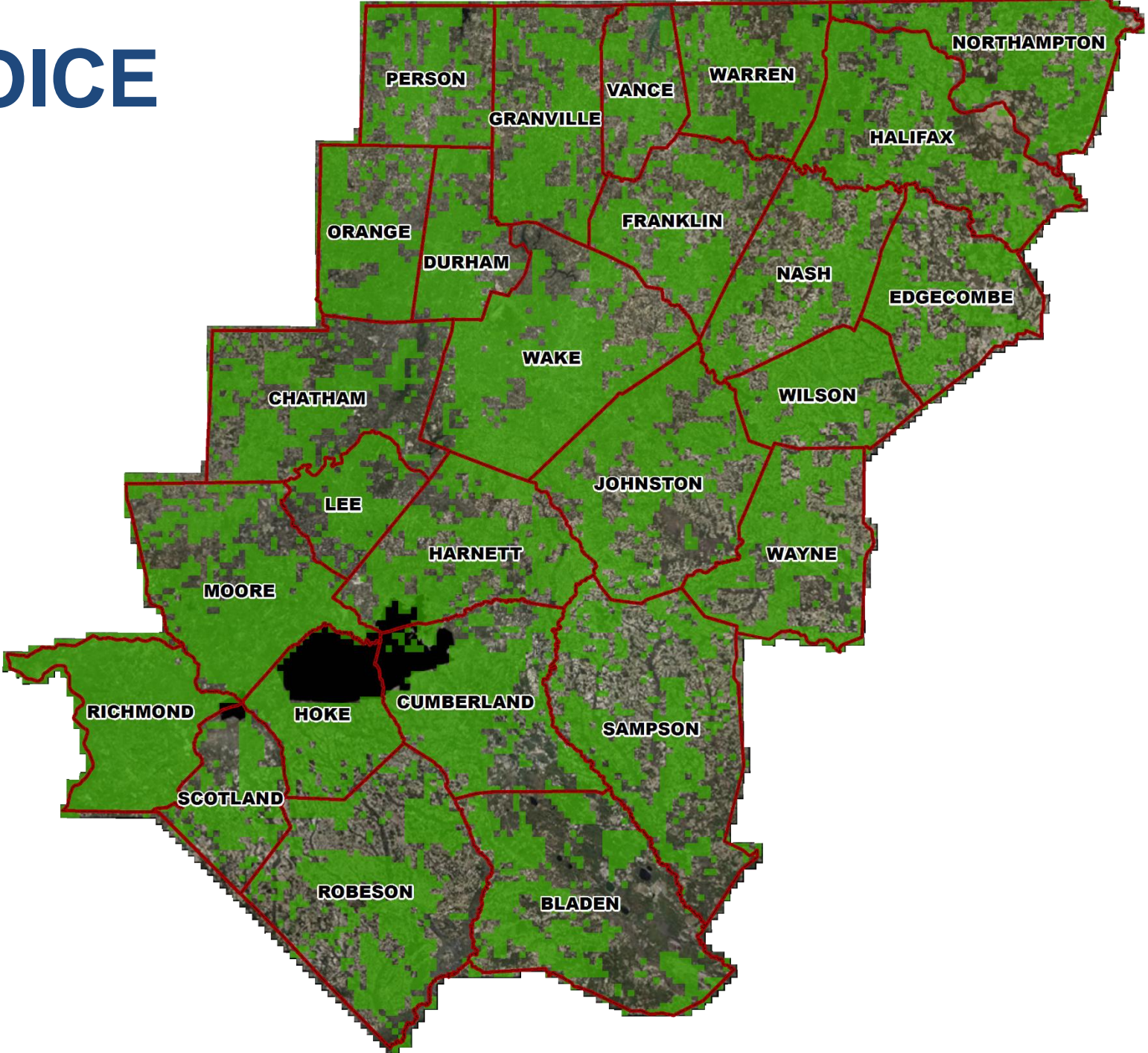
Eastern Piedmont 2017

Northern Piedmont and Mountains 2018

January 24, 2018



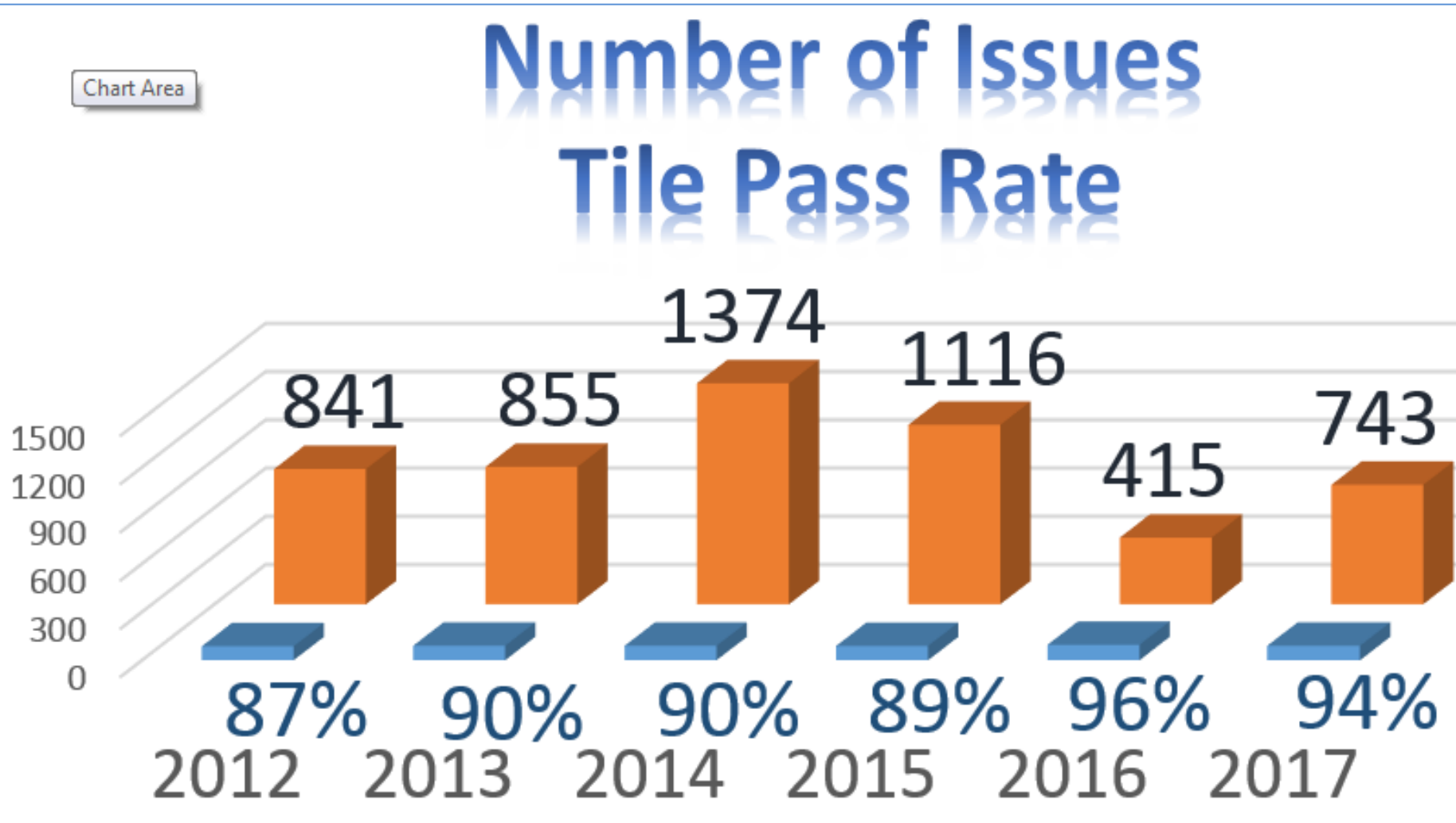
EP17 VOICE



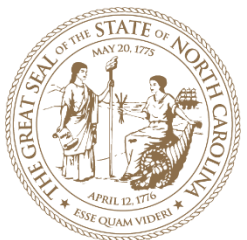
EP17 – Quality Review Statistics

Number of Issues Tile Pass Rate

Resolutions

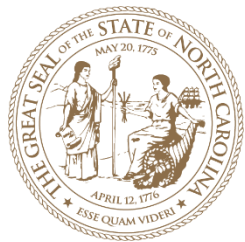
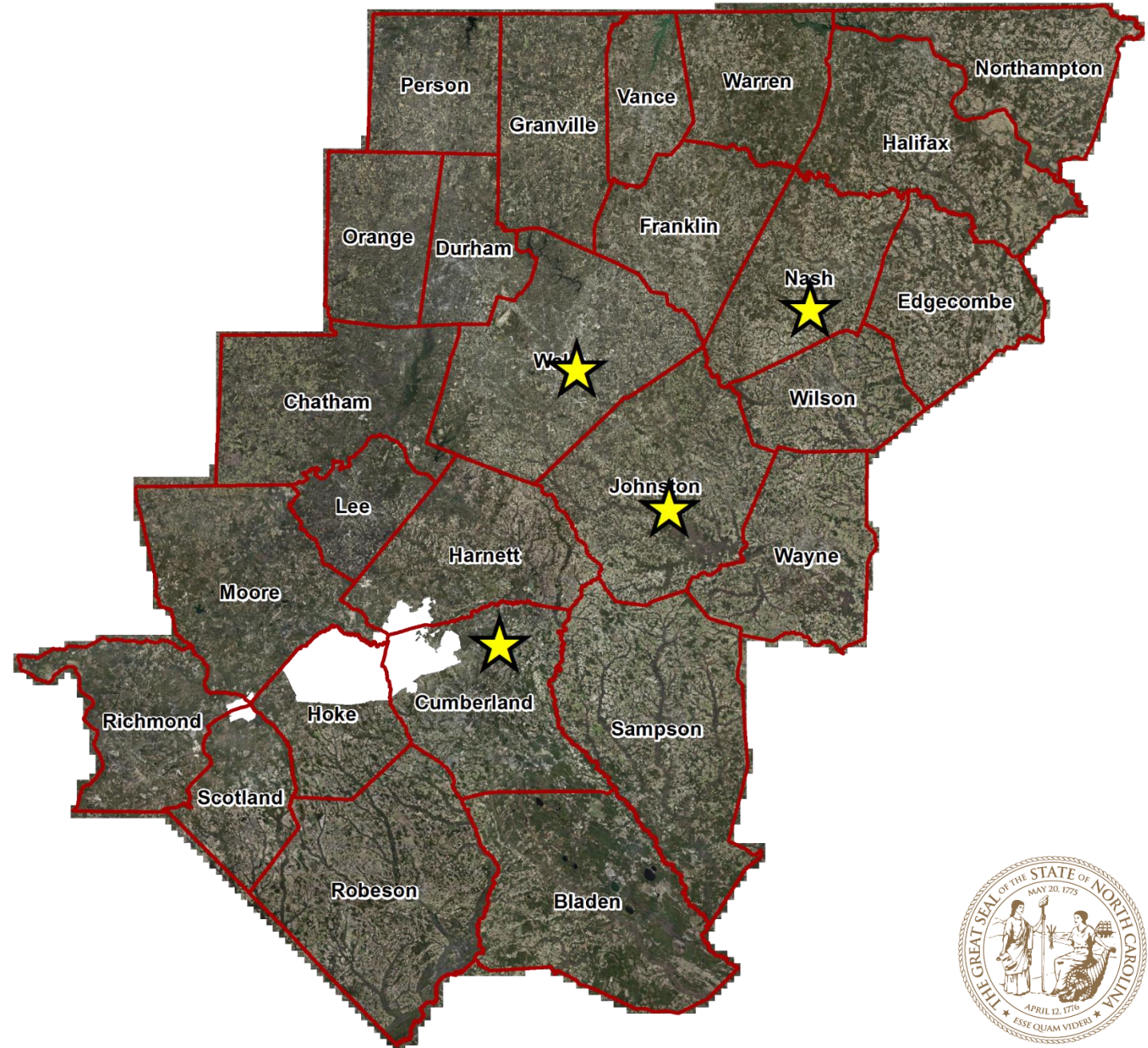


Phase

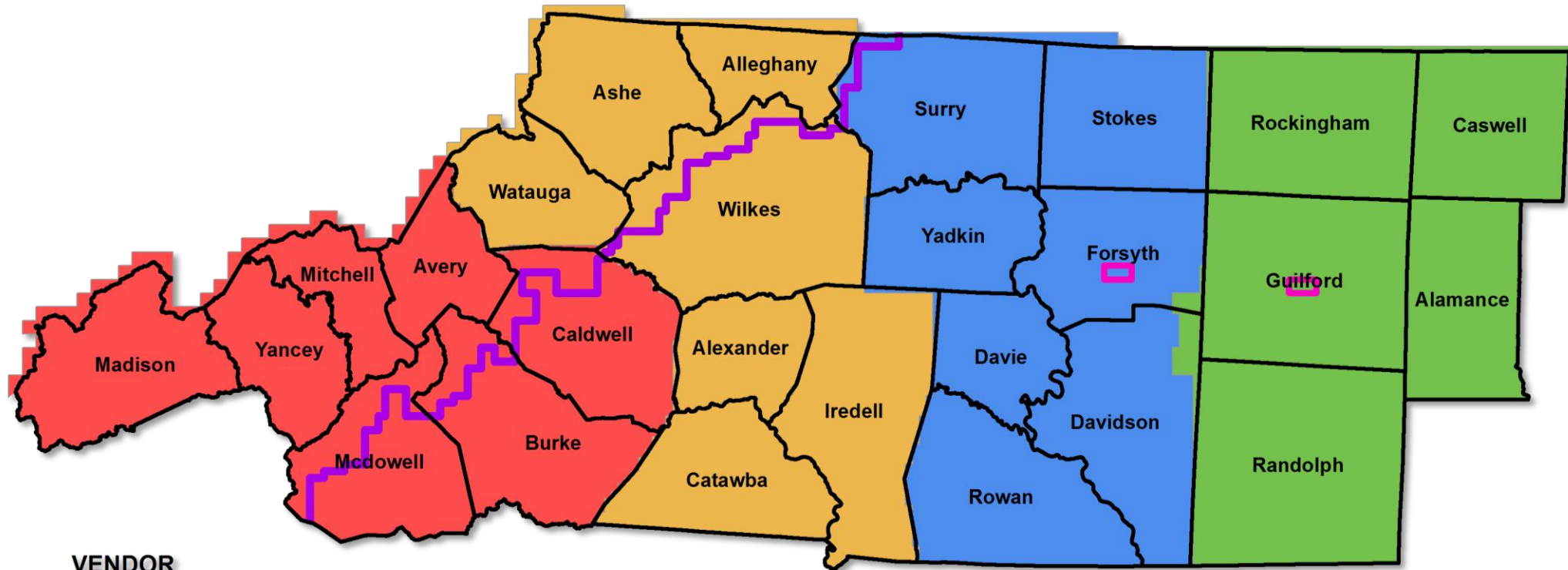


EP17 – Deliveries

- *Delivery meetings December 11 –13*
- *6 Weeks earlier than previous phases*
- *Delivered to 31 PSAPs and 26 Counties*

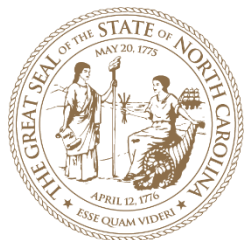


Northern Piedmont and Mountains 2018



VENDOR

-  Atlas Geospatial
-  Surdex Corporation
-  Sanborn Map Company
-  Spatial Data Consultants
-  True Orthoimagery Areas
-  Western Division Line - 38 Degree Sun Angle to West

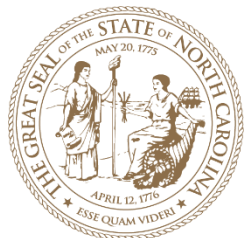
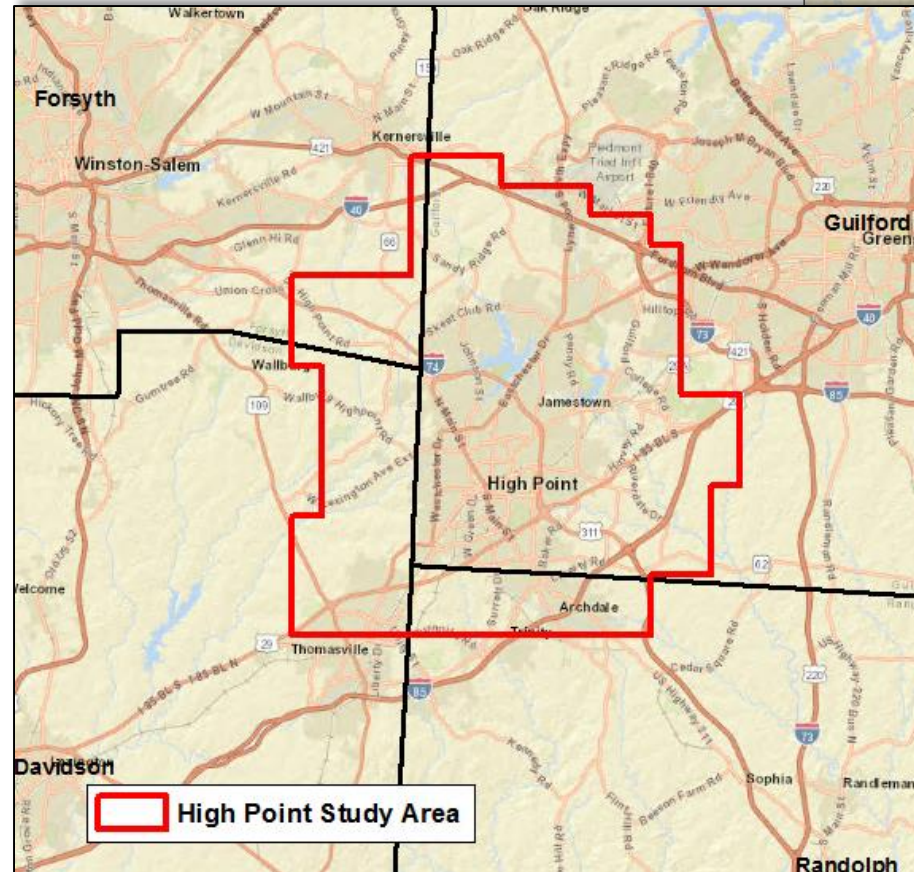
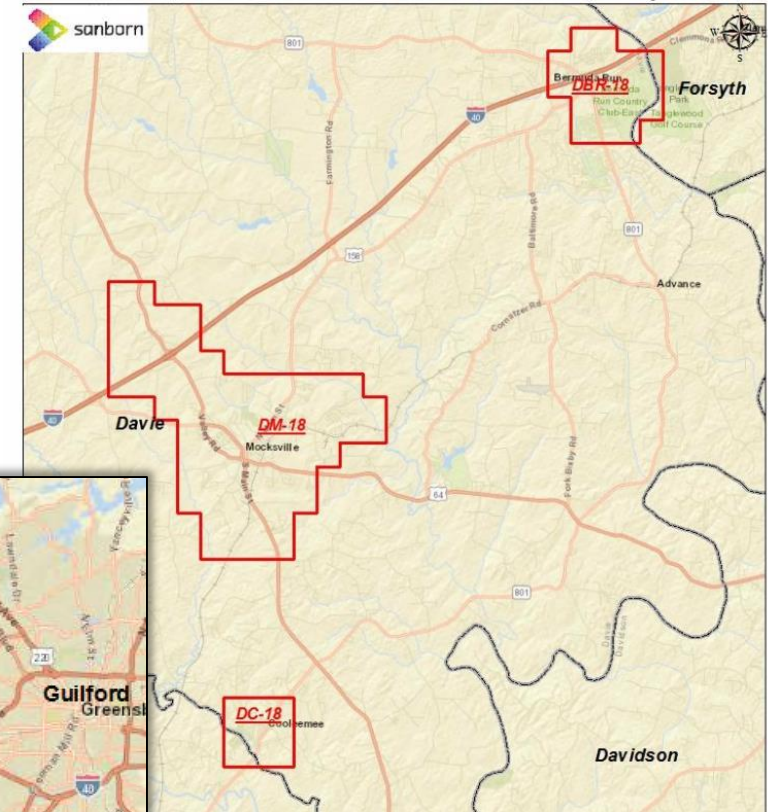


NPM 2018

Local Piggyback Projects:

- 3" Orthos:
 - High Point
 - Davie County – Mocksville, Cooleemee, and Bermuda Run
 - Boone (Potentially)
- Planimetrics/Building Footprints:
 - Forsyth County
 - Davie County
 - Davidson County
- CIR Interest: (No formal Agreement)
 - Davie County
 - Lexington

NPM18 - SA3 - 3-inch Areas
Mocksville, Cooleemee and Bermuda Run - Study Areas



Questions?

Ben Shelton

919.754.6377

Ben.Shelton@nc.gov

www.nconemap.gov/orthoimagery.aspx

