

Statewide Orthoimagery Program

Eastern Piedmont 2021
Northern Piedmont & Mountains
2022

Ben Shelton
Program Manager

January 12, 2022



Current Orthoimagery Program Cycle

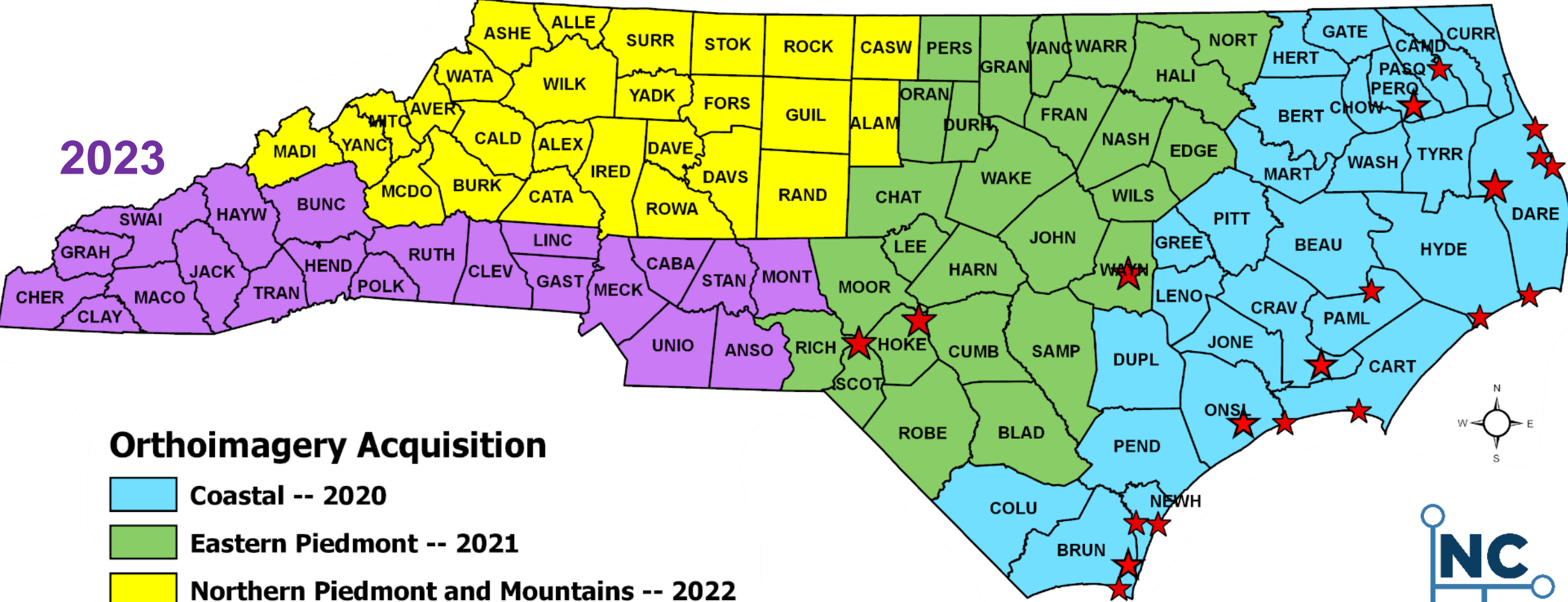
4-Year Cycle

2022

2021

2020

2023



Orthoimagery Acquisition

- Coastal -- 2020
- Eastern Piedmont -- 2021
- Northern Piedmont and Mountains -- 2022
- Southern Piedmont and Mountains -- 2023
- Military Installation Locations

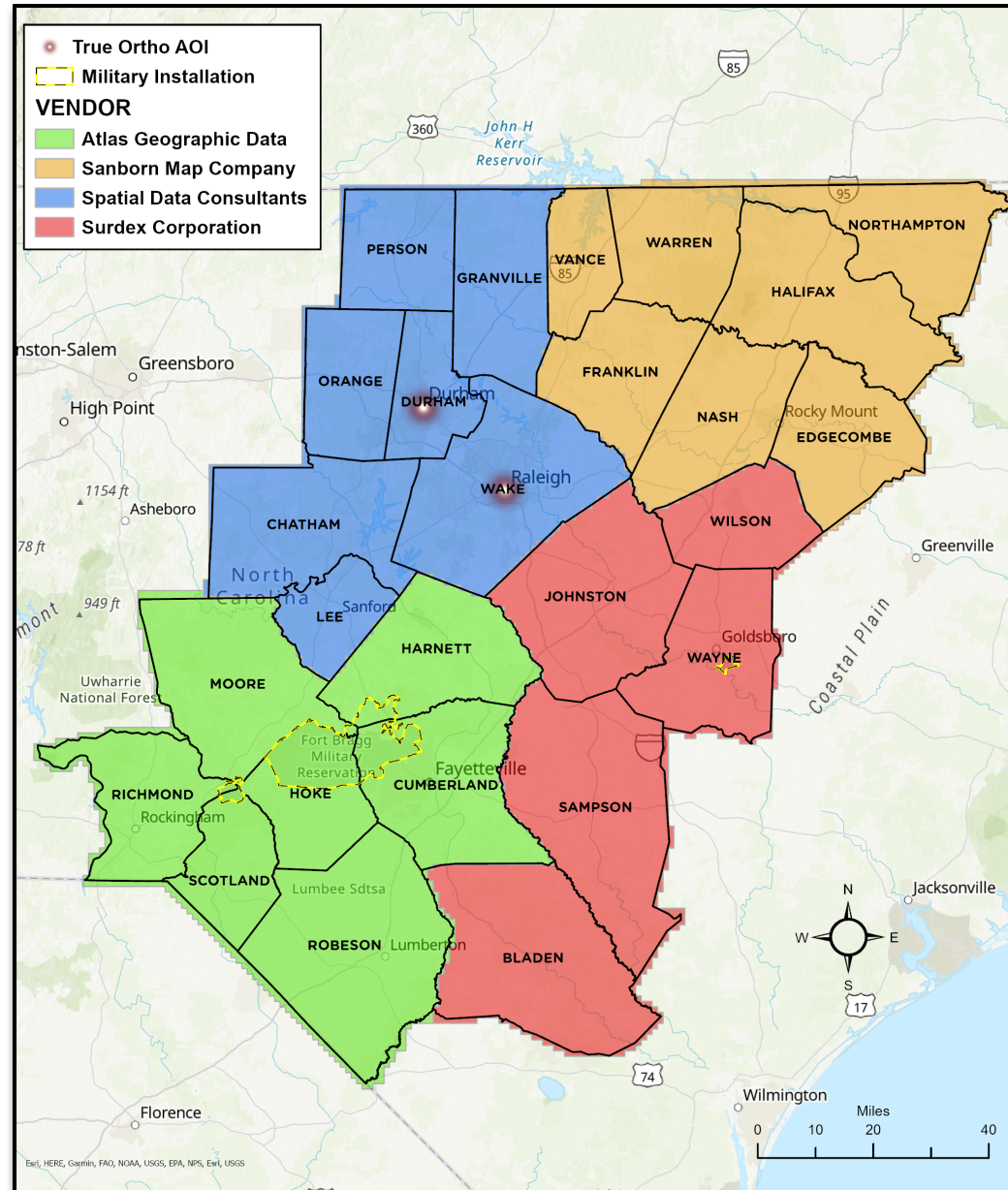


2021 Eastern Piedmont

- 26 counties
- 15,141 square miles
- 16,885 tiles (5,000' by 5,000')

- True Orthoimagery AOI:
 - Durham
 - Raleigh

- Coordination with Military Operations:
 - Fort Bragg
 - Camp Mackall
 - Seymour Johnson AFB



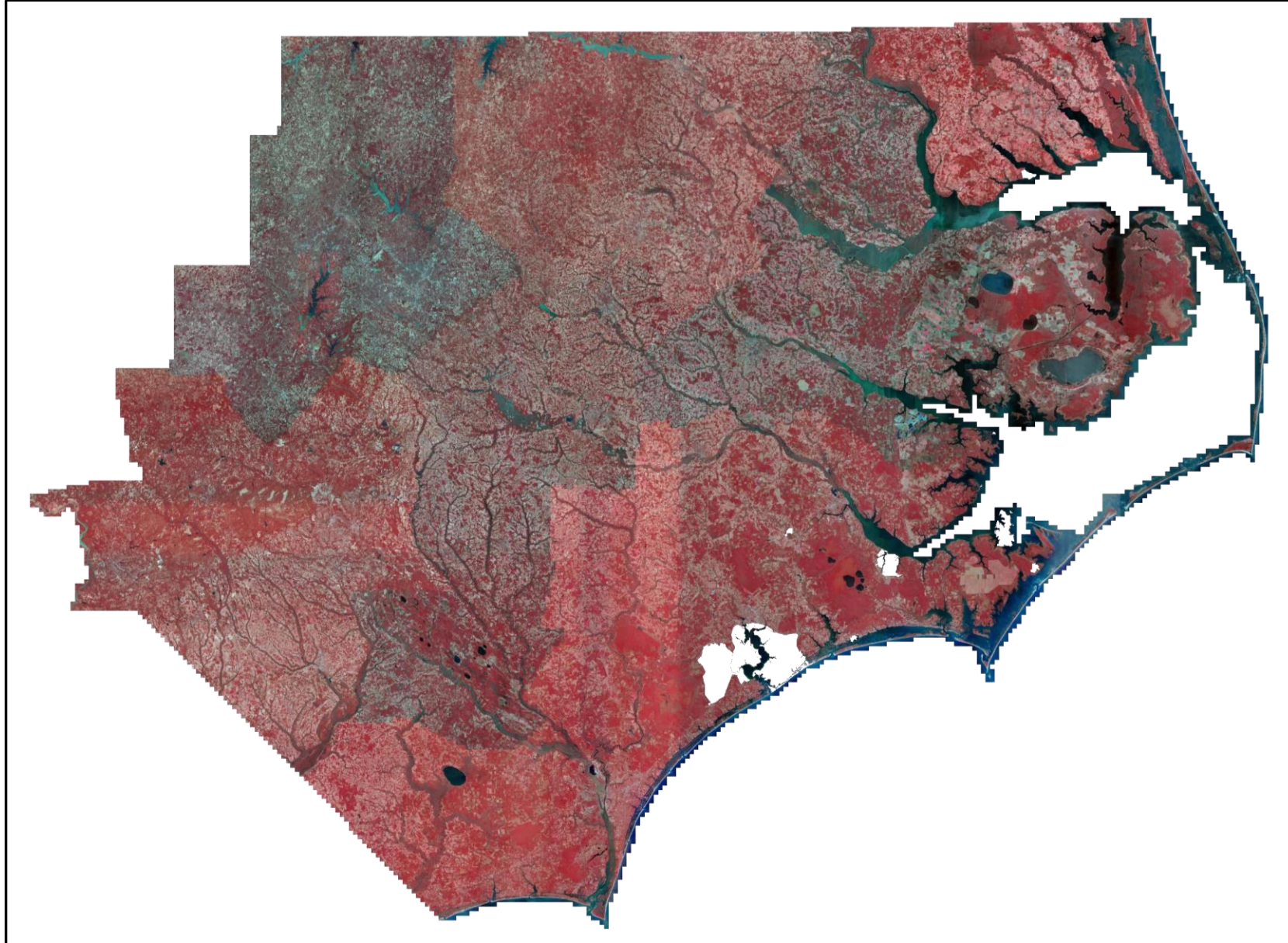
Project Approach

Military Partners



Project Approach

Color Infrared



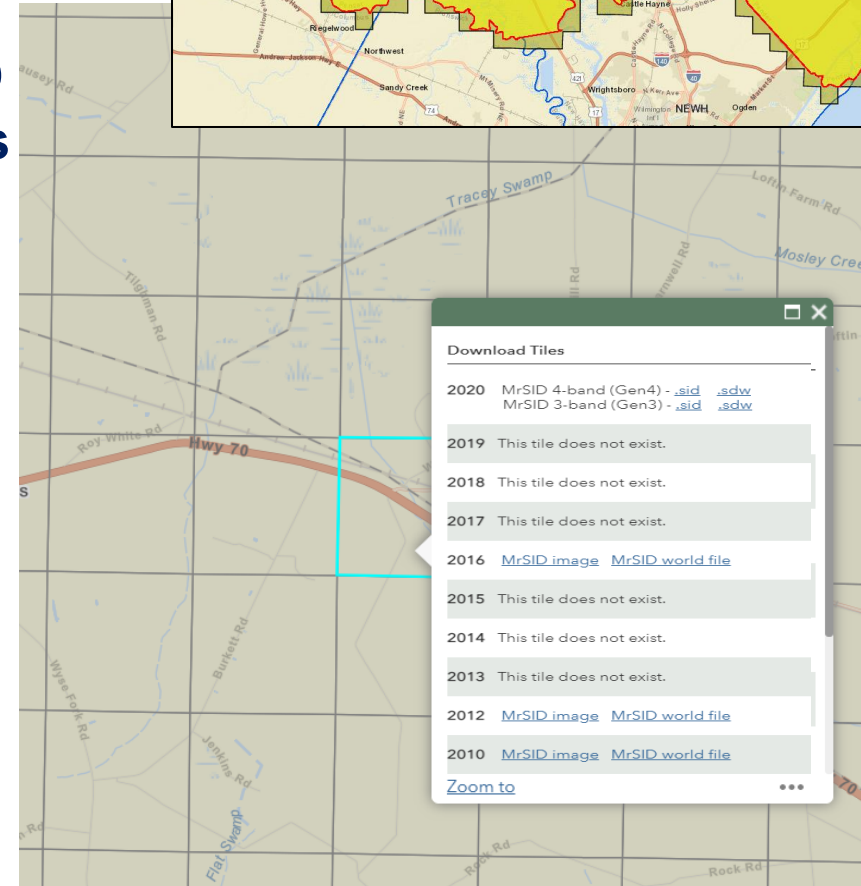
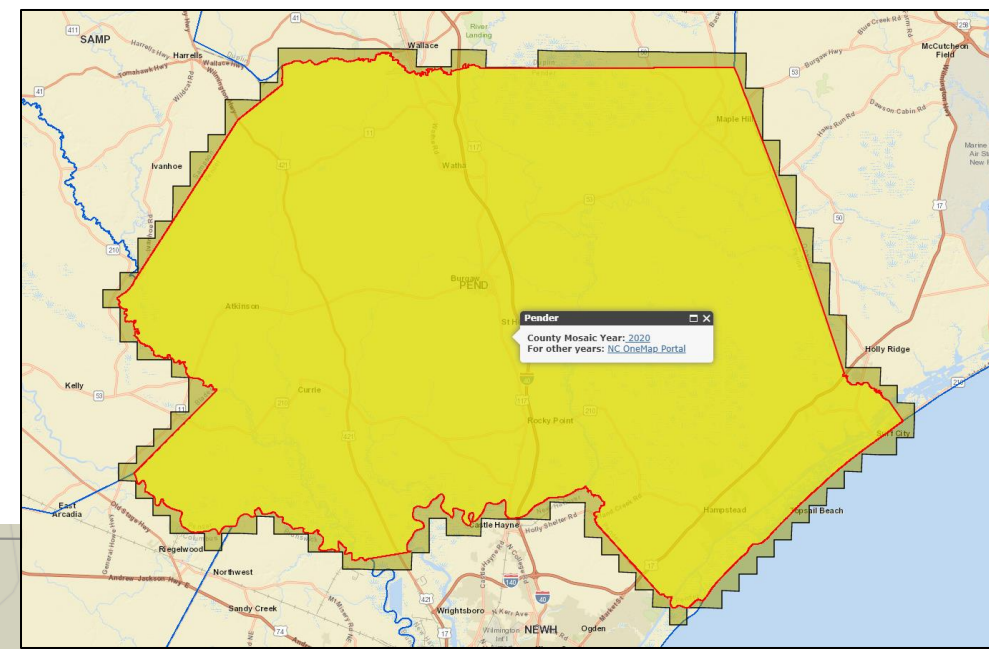
NC OneMap & AWS

NC OneMap Imagery Downloads

- <https://www.nconemap.gov/pages/imagery>
- **Single tile, 20:1 Compressed:**
 - 4-band Gen4 MrSID AND
 - 3-band Gen3 MrSID Tiles
- **Single file, 50:1 Compressed 4-band Gen4 MrSID**
- **Previous Years', Single File 50:1 County Mosaics**
- **Single tile, Cloud Optimized GeoTIFF (COG)**
 - Will be used to host Image Services for all years and ortho_latest

Presentation on COGs: <https://youtu.be/lx-4L2dRmRg>

- Users will be able to download multiple COG tiles using Image Service in ArcGIS
 - Select tiles in map with Select tool – right-click layer and go to Data>Download Raster



2022 Northern Piedmont & Mountains

Northern Piedmont and Mountains 2022

Vendor Selection

- 26 counties
- 12,349 Square Miles
- 25% of Project Area considered 'Mountain Acquisition'
- True Orthoimagery for Greensboro & Winston-Salem
- 4-Band Ortho Products continuing to be developed for this phase

	True Orthoimagery Areas
	Mountain Tile Division Line
	1 (3,267 Tiles) Atlas Geographic Data
	2 (3,042 Tiles) Surdex
	3 (2,410 Tiles) Sanborn Map Company
	4 (3,347 Tiles) Spatial Data Consultants
	5 (1,705 Tiles) Surveying and Mapping, LLC (SAM)



2022 Project Timeline



Questions?

Ben Shelton

919.754.6377

Ben.Shelton@nc.gov

<https://www.nconemap.gov/pages/imagery>

