

Statewide Orthoimagery Program

Southern Piedmont & Mountains
2019
Coastal 2020

Ben Shelton
Program Manager

January 27, 2020



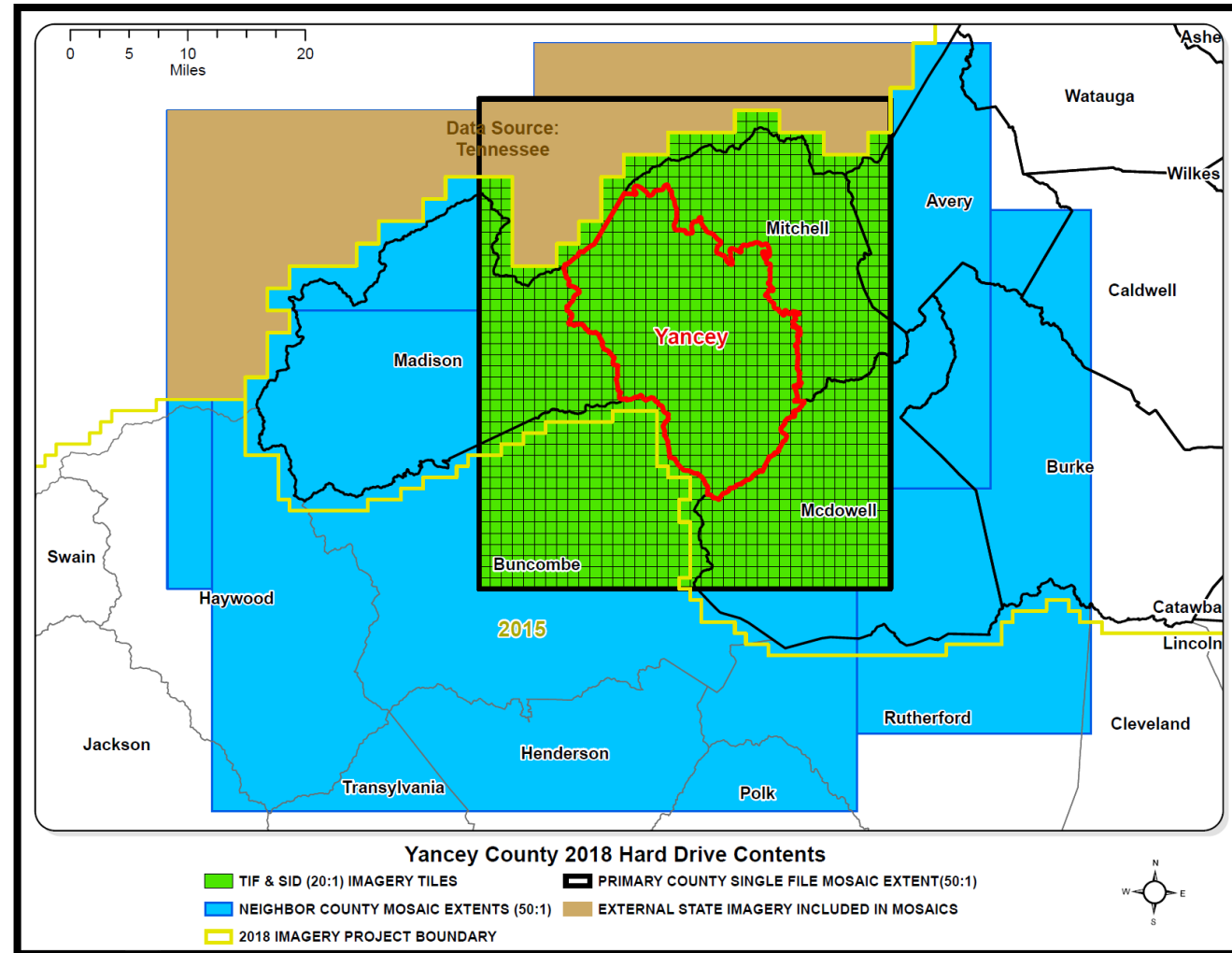
Southern Piedmont and Mountains 2019



- Regional Delivery Meetings held at 5 locations
 - December 2 through 4
- Imagery Live on NC OneMap through services and downloads (SID Tiles and County Mosaics)
- Working to add to ESRI World Imagery Base Map

Orthoimagery Deliverables –

- Full Resolution TIFF Tiles (5000' by 5000') –
 - 300mb per tile
 - 3-Band (RGB)
- 20:1 Compressed MrSID Tiles (5000' by 5000') –
 - 15mb per tile
 - Generation 3 SID
 - Visually Lossless
- 50:1 Compressed MrSID Mosaic Single File (County 7-mile Rectangle)
 - 10-20gb depending on county
 - Generation 3 SID
 - Some visual degradation
- NC OneMap Image Services
 - Single year service
 - Orthoimagery_latest
 - Orthoimagery_all
 - <https://www.nconemap.gov/>



CO20 Project Area

- 27 counties
- 15,678 square miles
- 17,483 tiles (5,000' by 5,000')

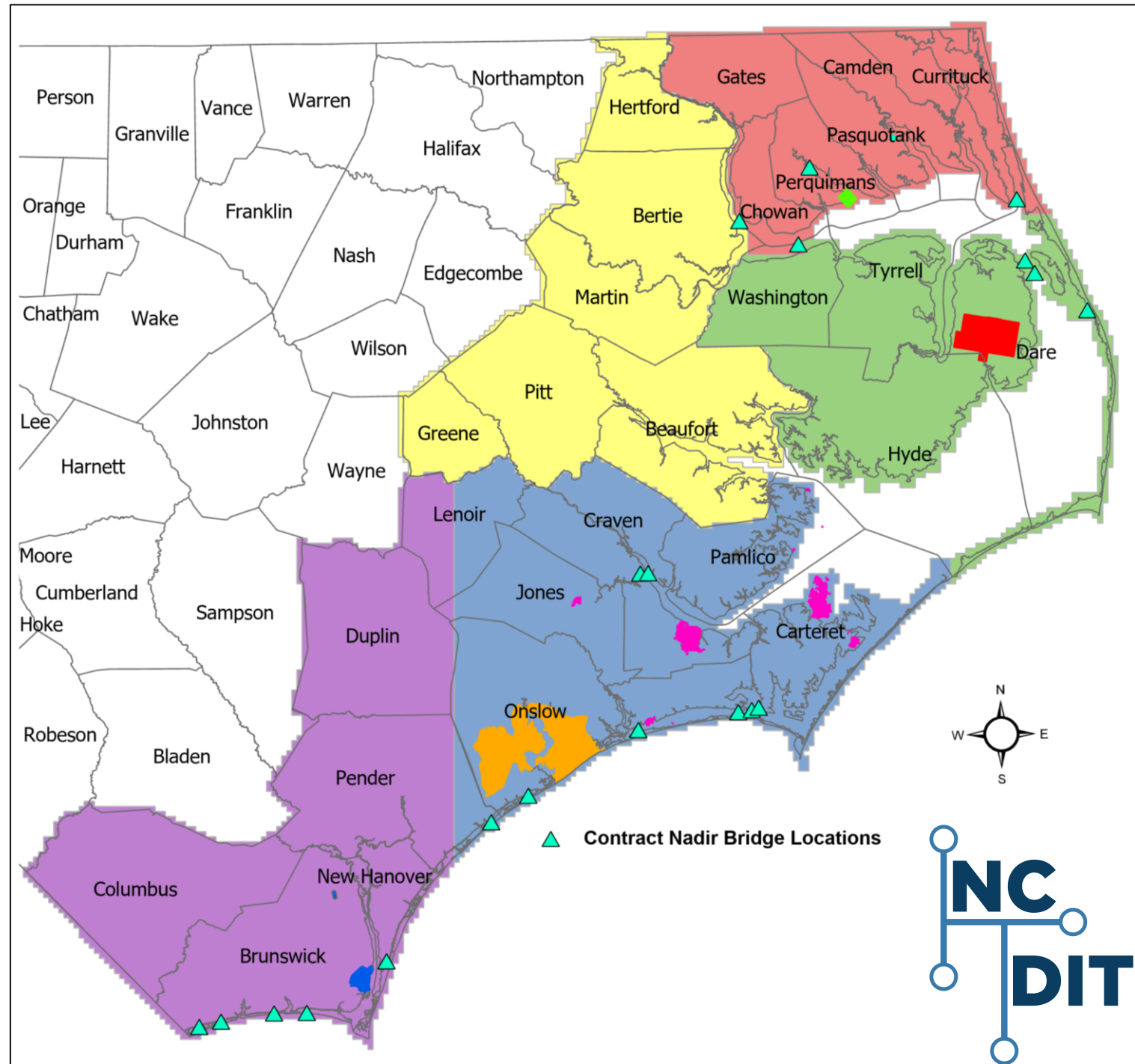
- Nadir Orthoimagery AOI:
 - Wilmington
 - Greenville
 - 18 major bridges

- Coordination with Military Operations:
Military Boundaries

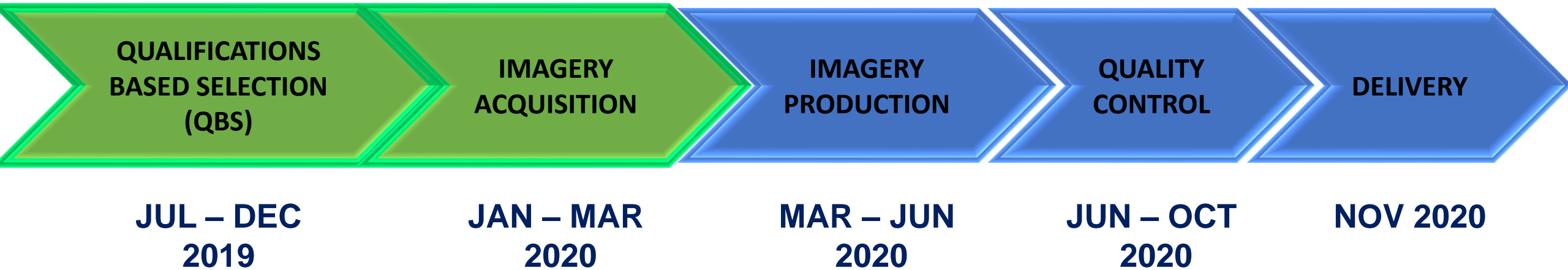
- Harvey Point
- US Coast Guard Base Elizabeth City
- USAF Dare Bombing Range
- USMCB Camp Lejeune
- USMCAS Cherry Point
- US Army Military Ocean Terminal Sunny Point

Study Area

- SA1 - Quantum Spatial
- SA2 - Surdex Corporation
- SA3 - Sanborn Map Company
- SA4 - Atlas Geographic Data
- SA5 - Spatial Data Consultants



CO20 Project Timeline



Questions?

Ben Shelton

919.754.6377

Ben.Shelton@nc.gov

<https://www.nconemap.gov/pages/imagery>

