

Statewide Orthoimagery Program

Northern Piedmont and Mountains
2018

Southern Piedmont and Mountains
2019

April 17, 2018



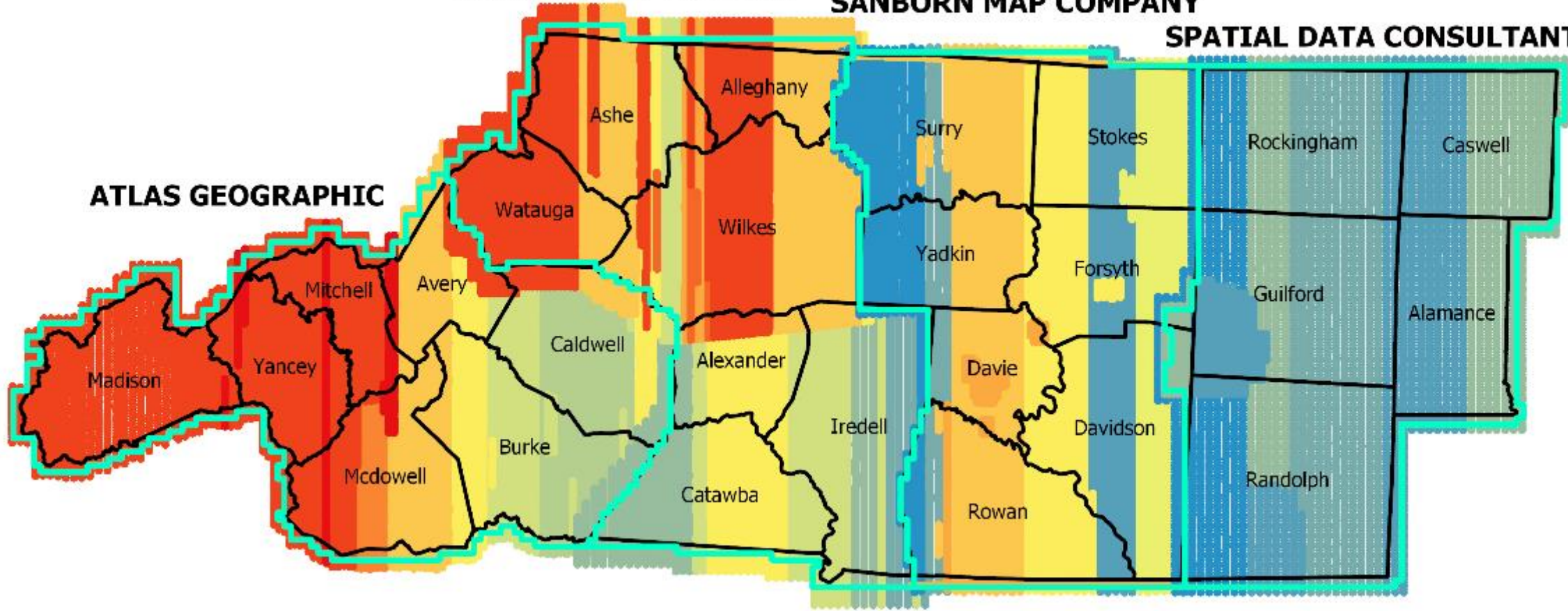
Northern Piedmont and Mountains 2018

SURDEX CORPORATION

SANBORN MAP COMPANY

SPATIAL DATA CONSULTANTS

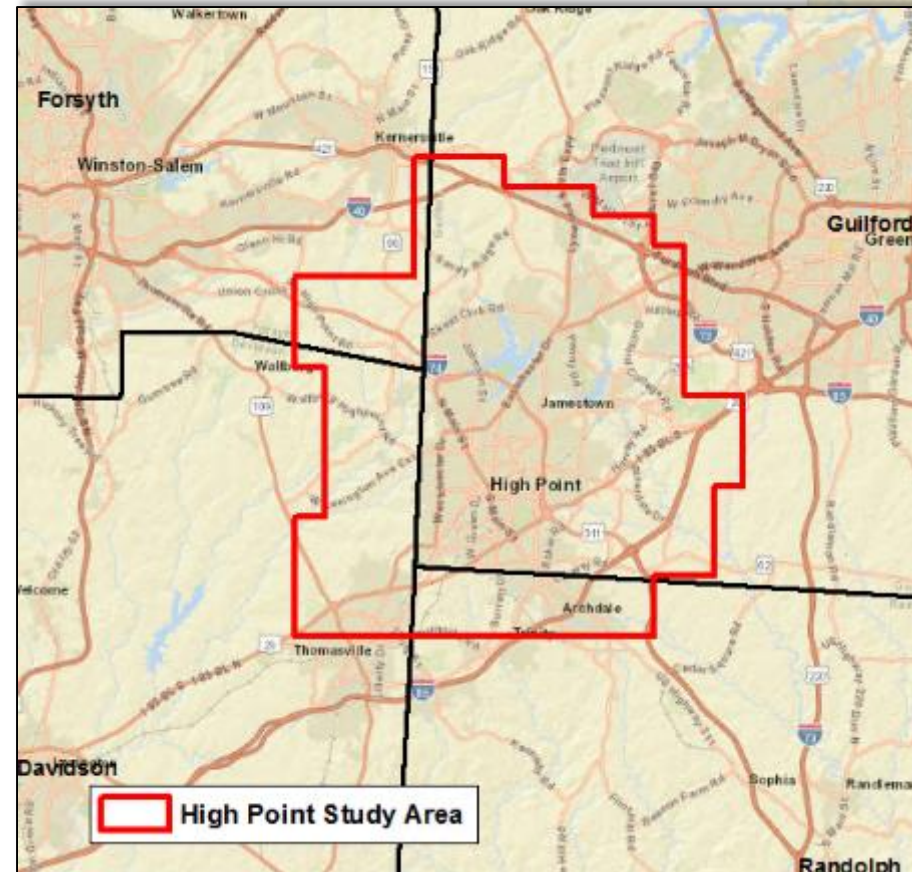
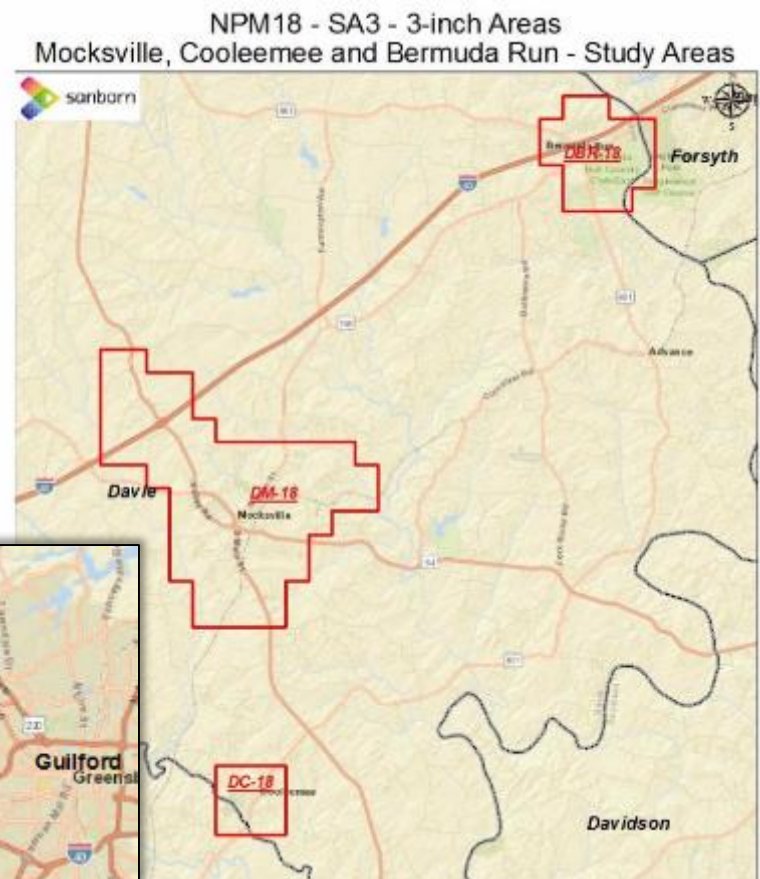
ATLAS GEOGRAPHIC



NPM 2018

Local Piggyback Projects:

- 3" Orthos:
 - High Point
 - Davie County – Mocksville, Cooleemee, and Bermuda Run
 - Boone
- Planimetrics/Building Footprints:
 - Forsyth County
 - Davie County
 - Davidson County
- CIR Interest: (No formal Agreement)
 - Davie County
 - Lexington

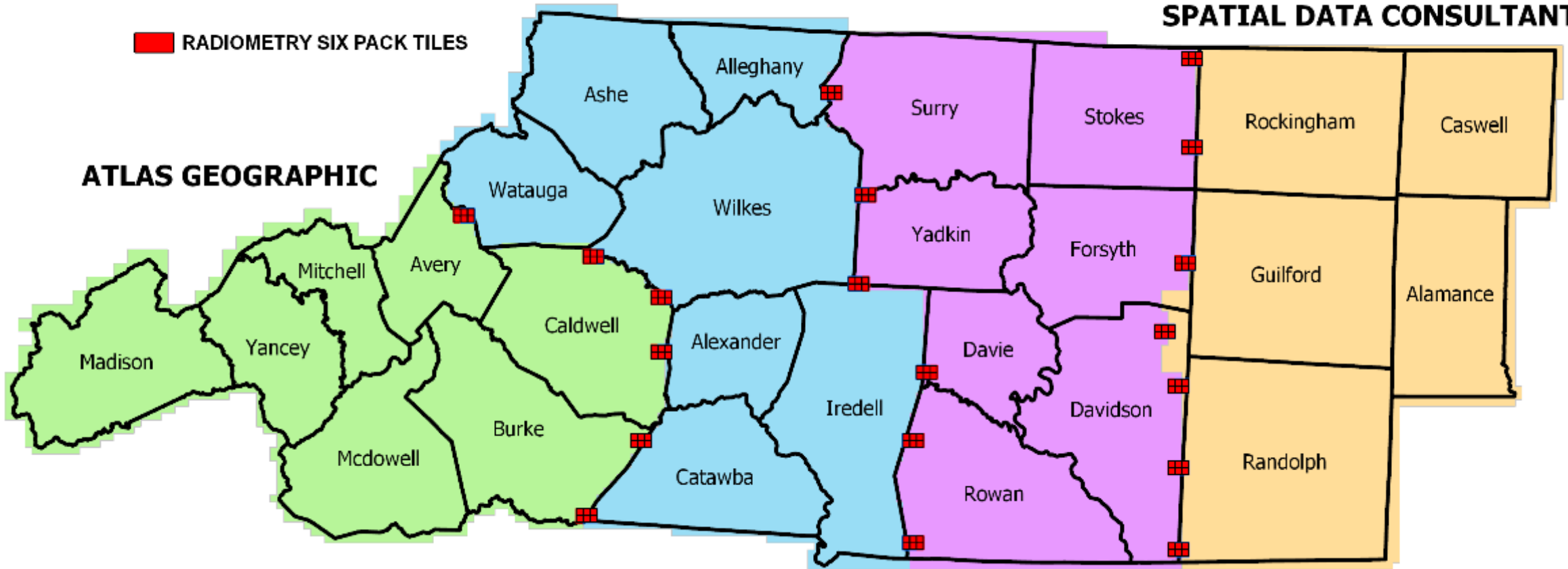


Northern Piedmont and Mountains 2018

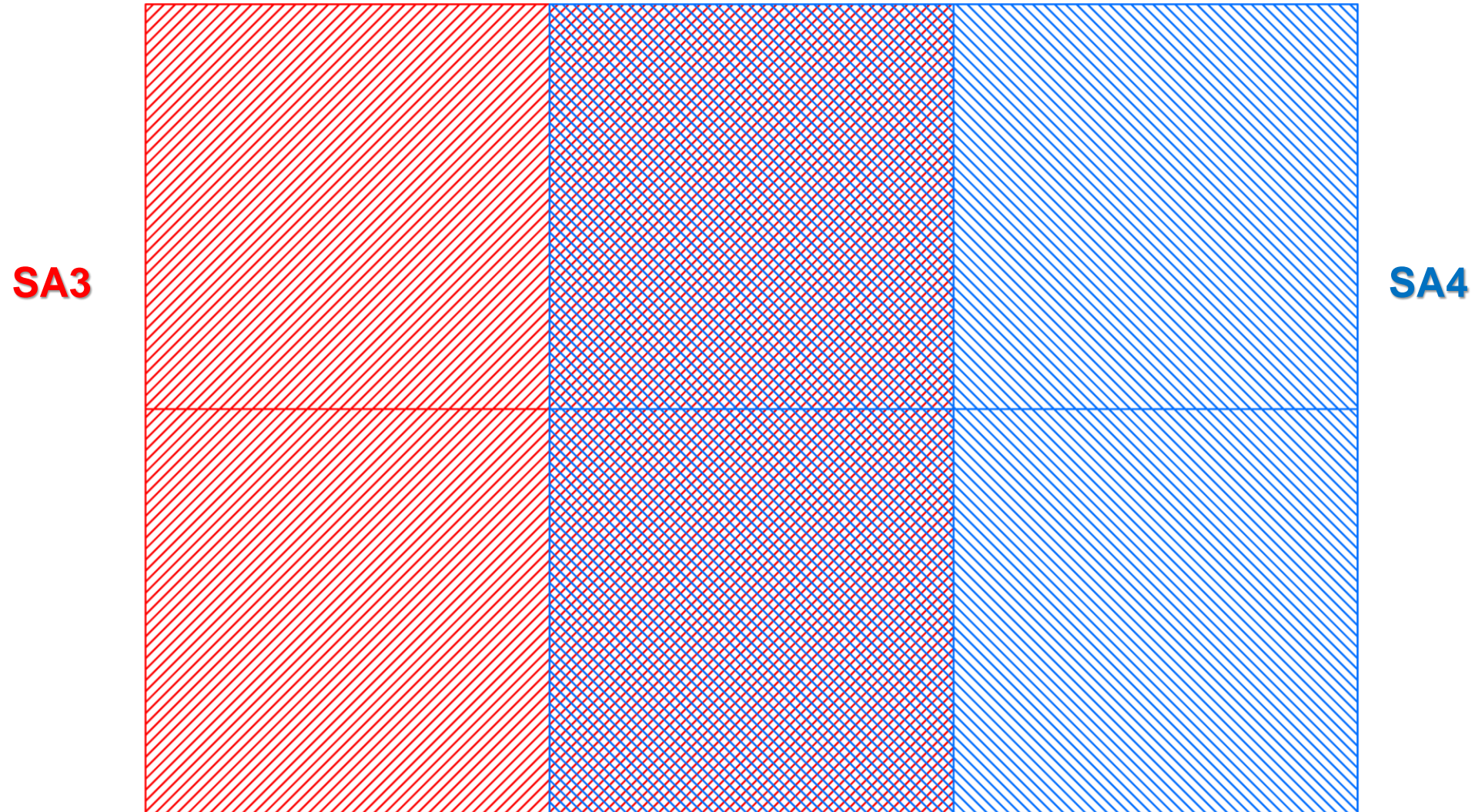
SURDEX CORPORATION

SANBORN MAP COMPANY

SPATIAL DATA CONSULTANTS



Northern Piedmont and Mountains 2018





SA3

SA4



SA3

SA4

NPM18 - Schedule

4/19

- Ortho Gen workshop with vendors

6/8

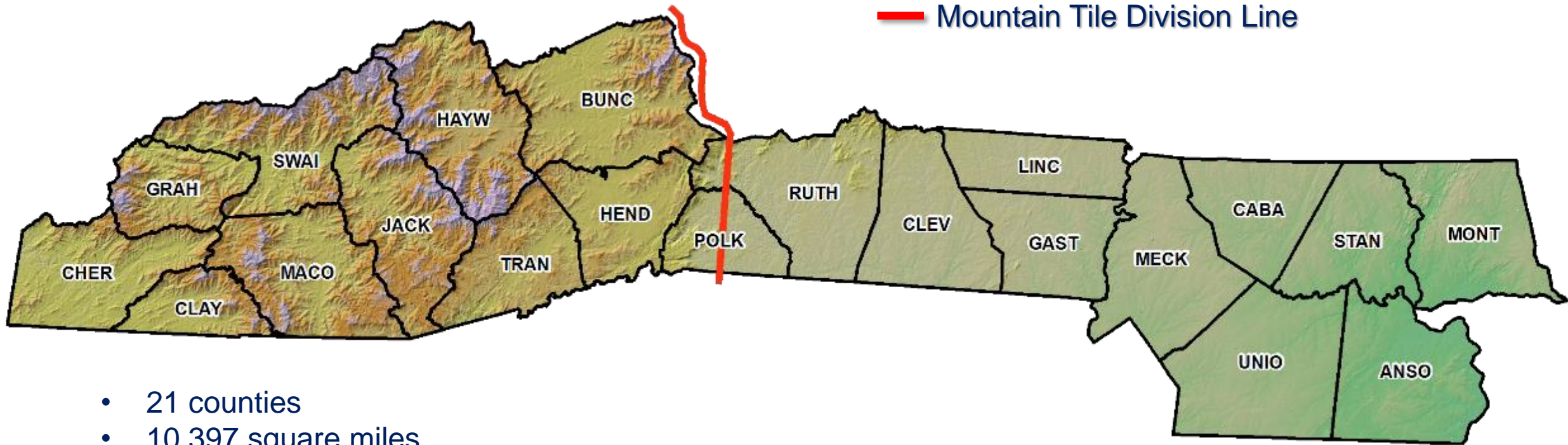
- Preliminary Web Map Service for each Study Area

7/30 – 9/21

- VOICE review



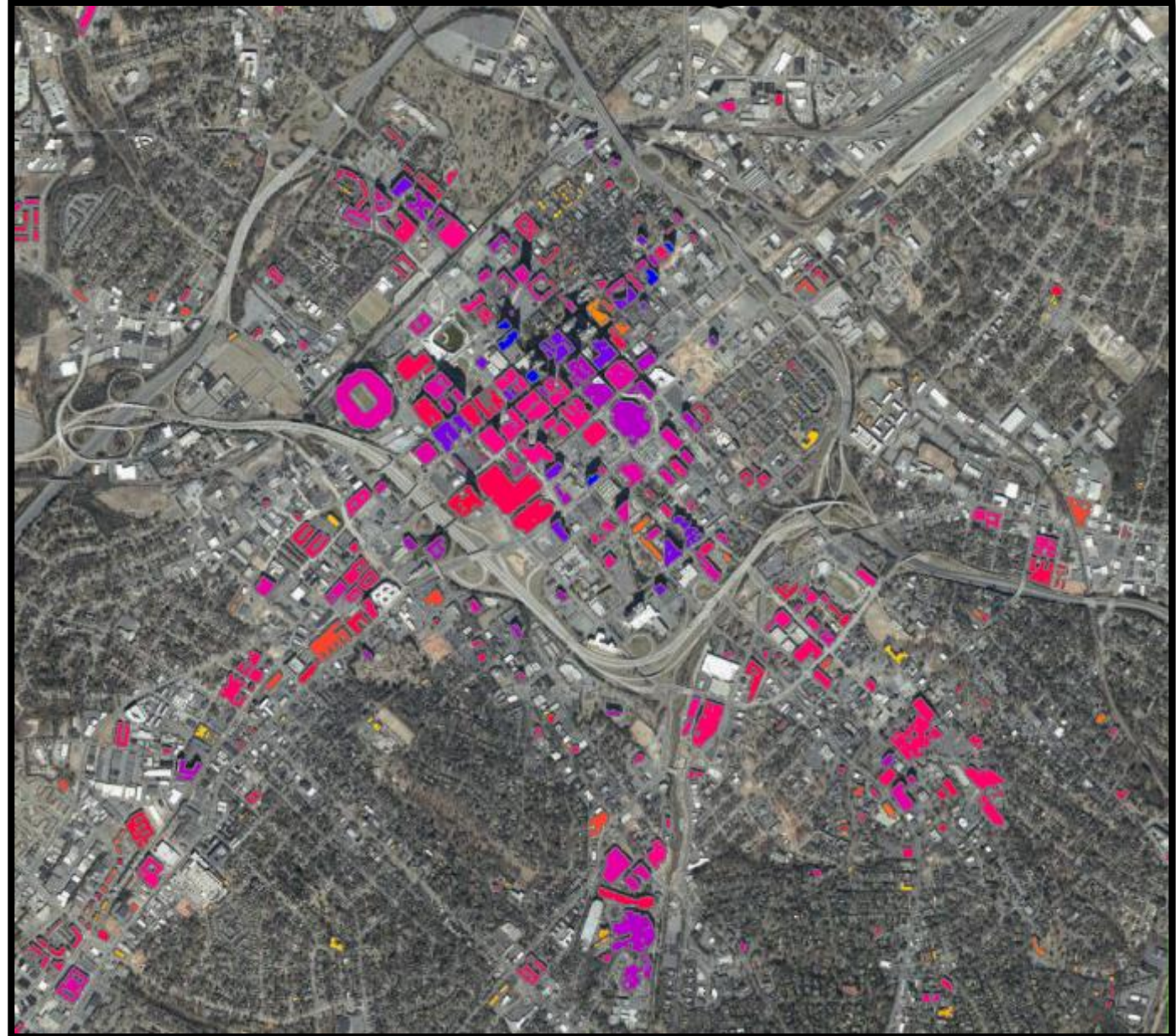
Southern Piedmont and Mountains 2019














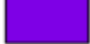
- 21 counties
- 10,397 square miles
- 50% of project are considered Mountain Tiles

SPM19 True Ortho Approach

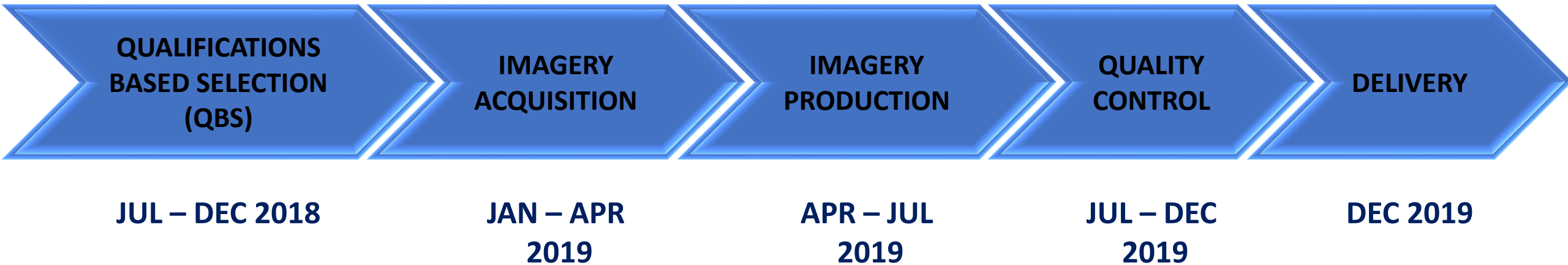
- Structures over 40 feet tall
- Increased flight lines
- Increased processing specifications:
 - 3-D Building Model
 - Increased seamlines



BUILDING HEIGHT

	40.00 – 41.25ft		46.30 – 50.14ft
	41.26 – 41.91ft		50.15 – 57.05ft
	41.92 – 42.28ft		57.06 – 69.45ft
	42.29 – 42.95ft		69.46 – 91.69ft
	42.96 – 44.14ft		91.70 – 131.61ft
	44.15 – 46.29ft		131.62 – 203.24ft
			203.25 – 331.76ft

Project Timeline



Questions?

Ben Shelton

919.754.6377

Ben.Shelton@nc.gov

www.nconemap.gov/orthoimagery.aspx

