



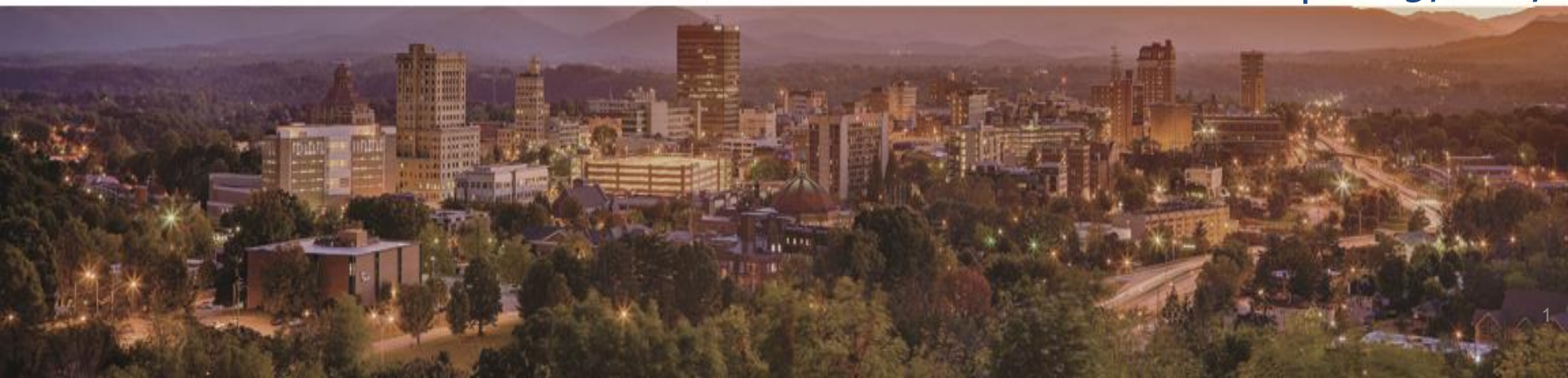
*Statewide Orthoimagery Program  
Coastal 2016*

*Eastern Piedmont 2017*

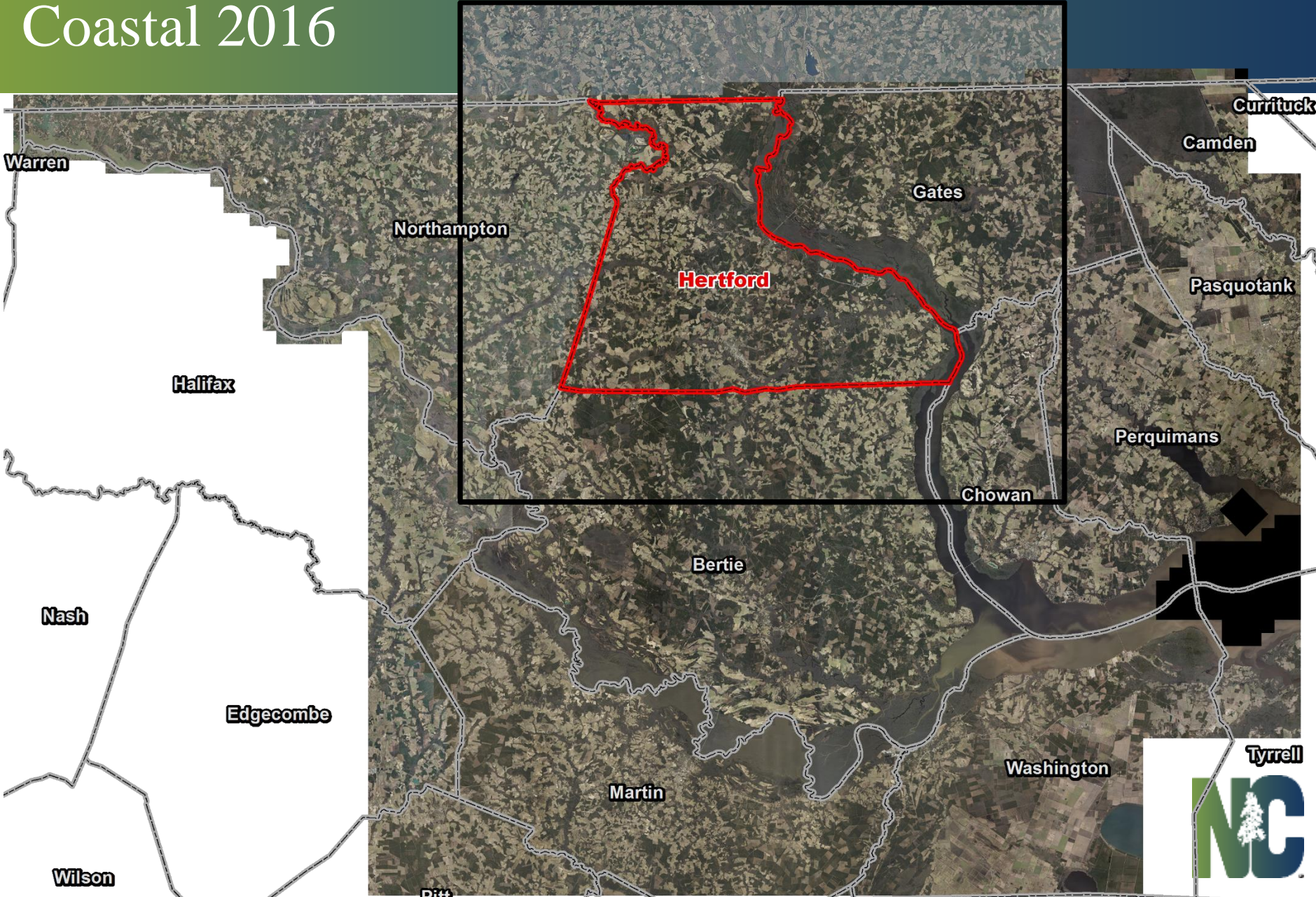
*Northern Piedmont & Mountains 2018*

Statewide Mapping Advisory Committee

April 19, 2017




# Coastal 2016



## NC Orthoimagery Program

Overview 2012-2015 2016-2019



### Statewide 2016 - 2019

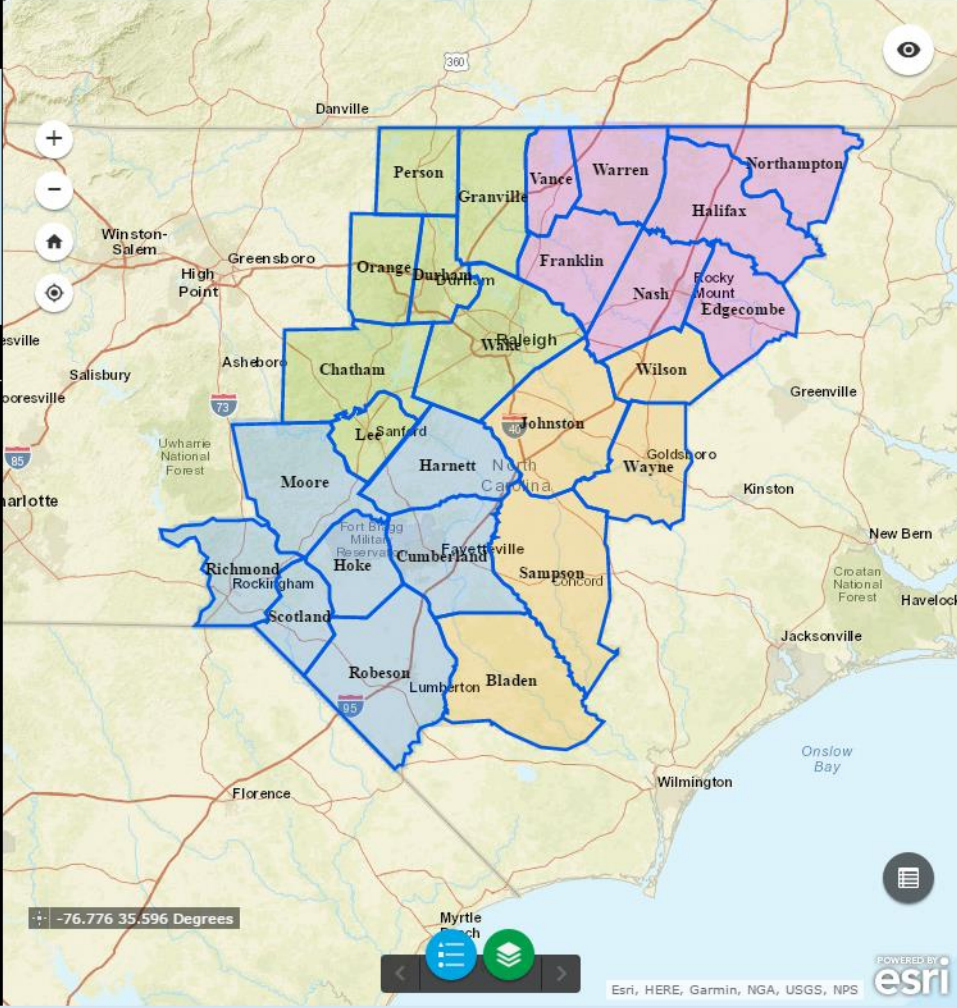
#### 2017 - Eastern Piedmont

- Tiles: 16,889
- Square Miles: 15,145
- Counties: 26
- PSAP: 31

The adjacent map displays the current acquisition status for the Eastern Piedmont Project. As flights take place, this map will be updated to reflect the current amount of images acquired. Web cam locations are also available to see current ground conditions.

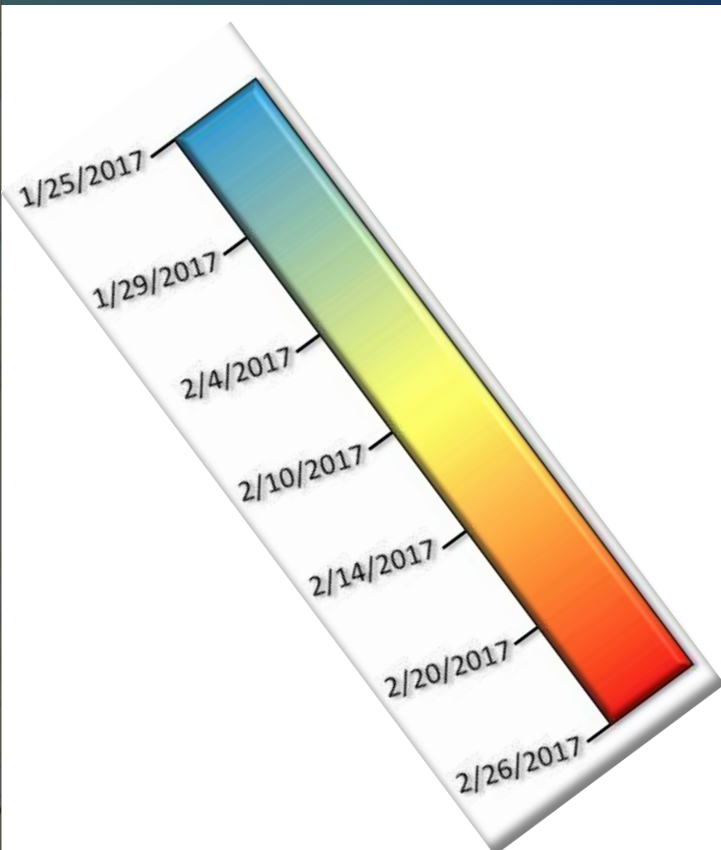
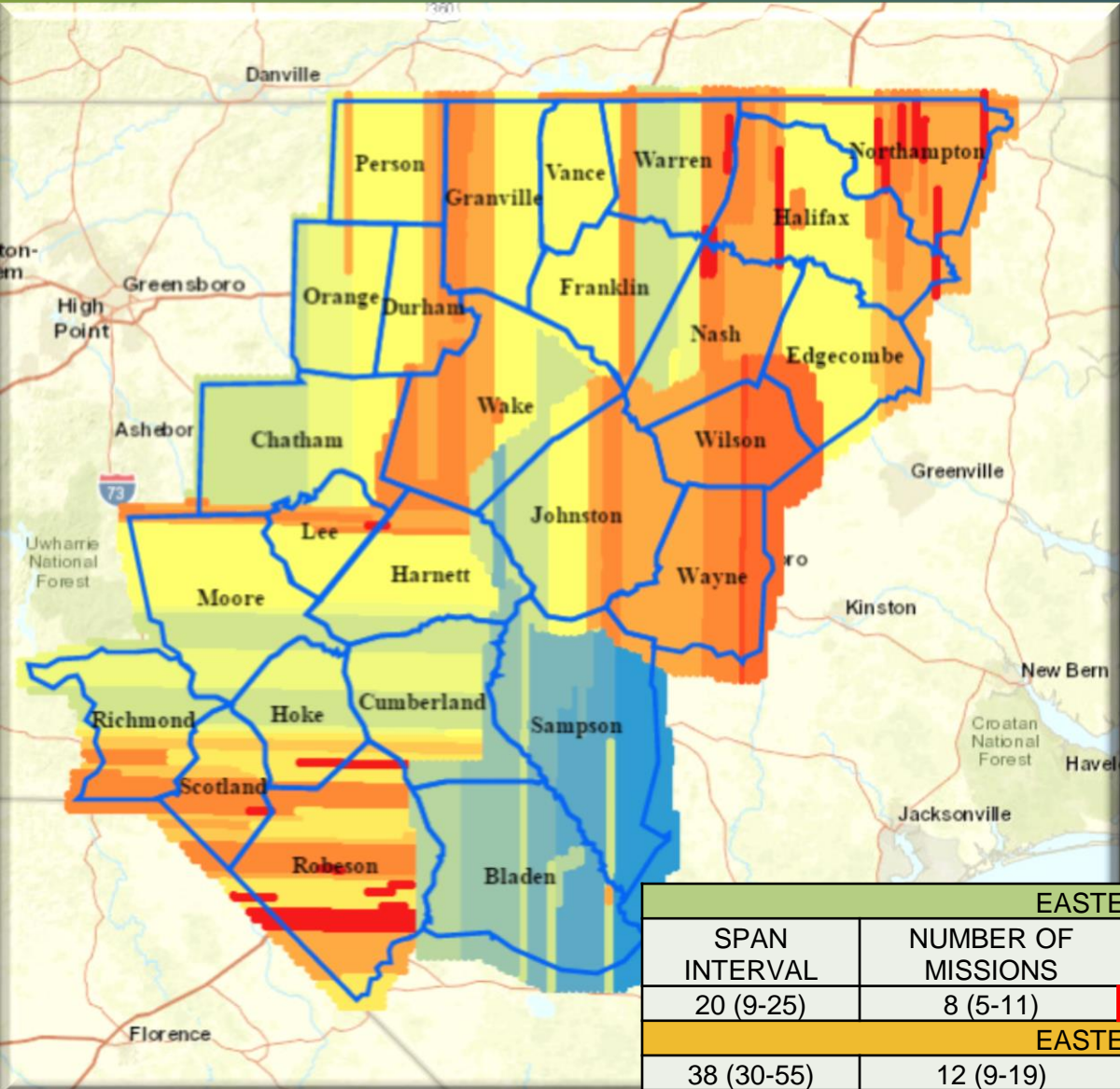
#### 2018 - Northern Piedmont and Mountains

COMING SOON!



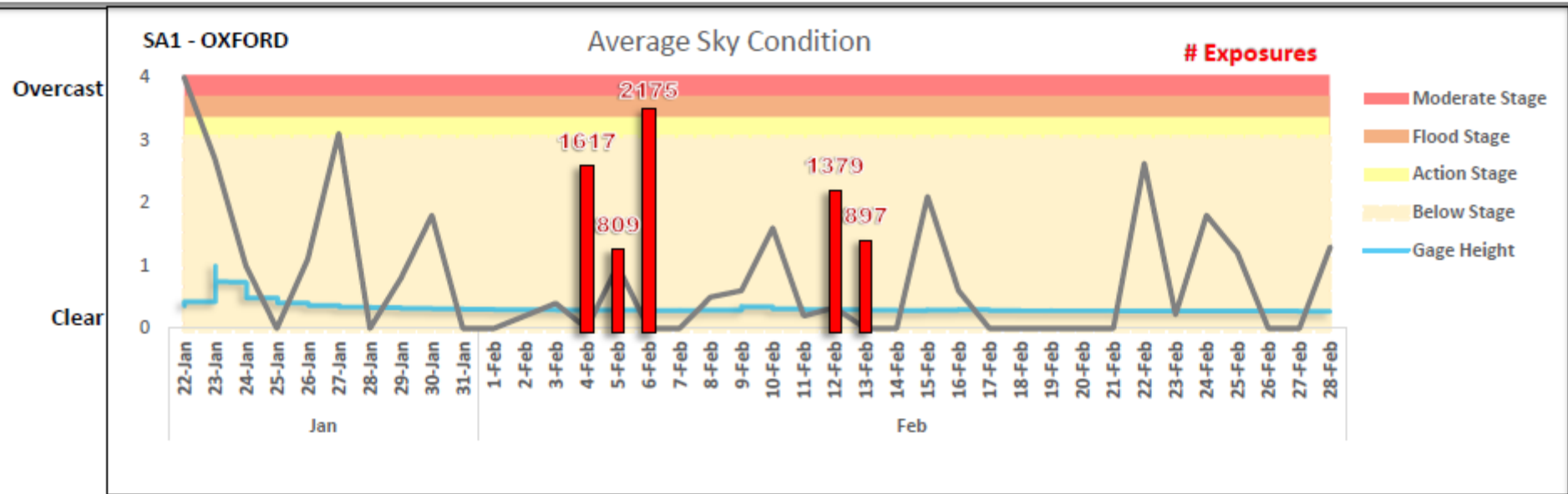
Map controls: +, -, Home, Location, Myrtle Beach, Esri logo, Powered by Esri, Esri, HERE, Garmin, NGA, USGS, NPS

# Eastern Piedmont 2017 Acquisition Status



EASTERN PIEDMONT 2017				
SPAN INTERVAL	NUMBER OF MISSIONS	PERCENT JANUARY	PERCENT FEBRUARY	PERCENT MARCH
20 (9-25)	8 (5-11)	15%	85%	
EASTERN PIEDMONT 2013				
38 (30-55)	12 (9-19)	0%	79%	21%

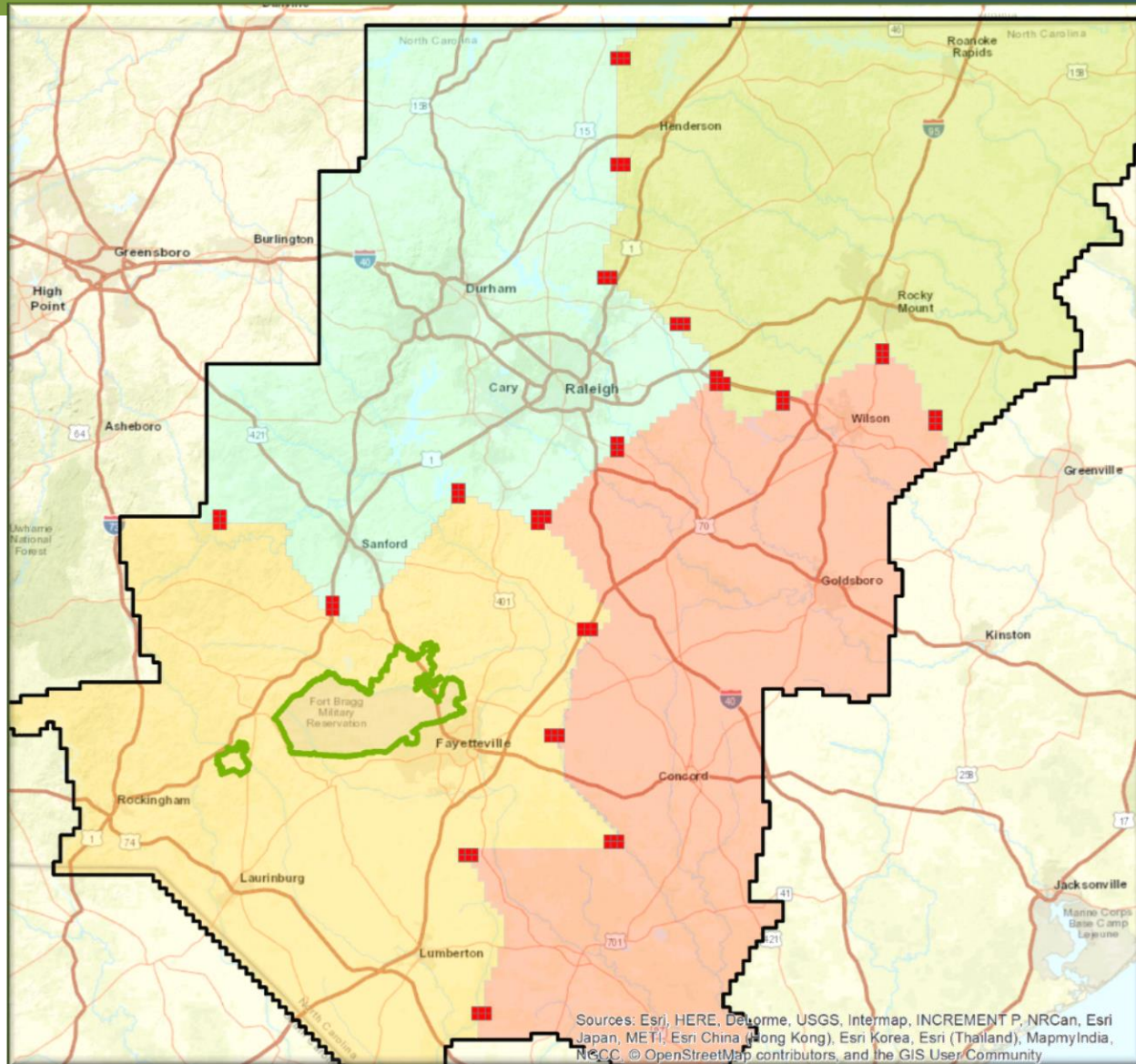
# Performance Assessment



1. Span
2. Density
3. Frequency
4. Start



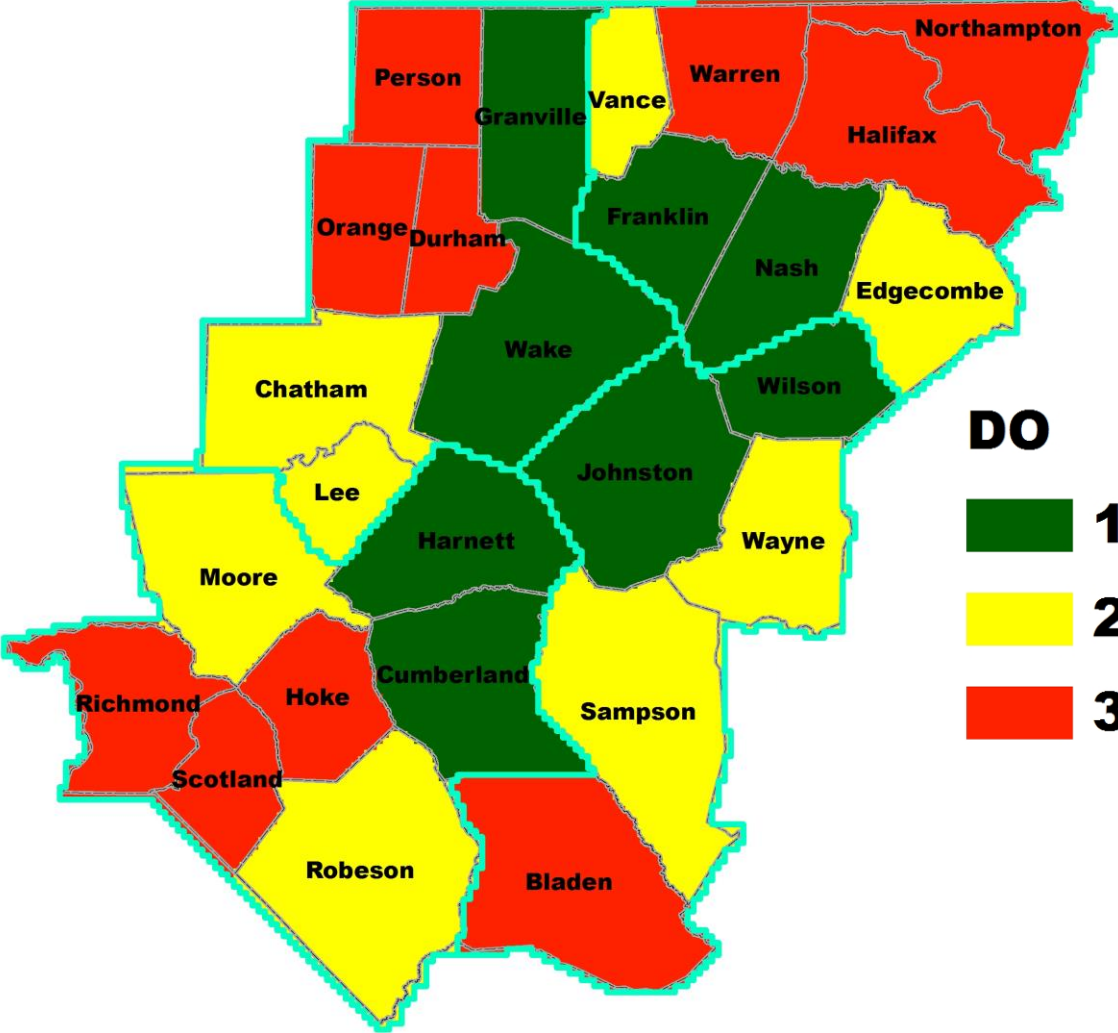
# Radiometry Evaluation



# *Radiometry Assessment*



# Delivery Order



### DO

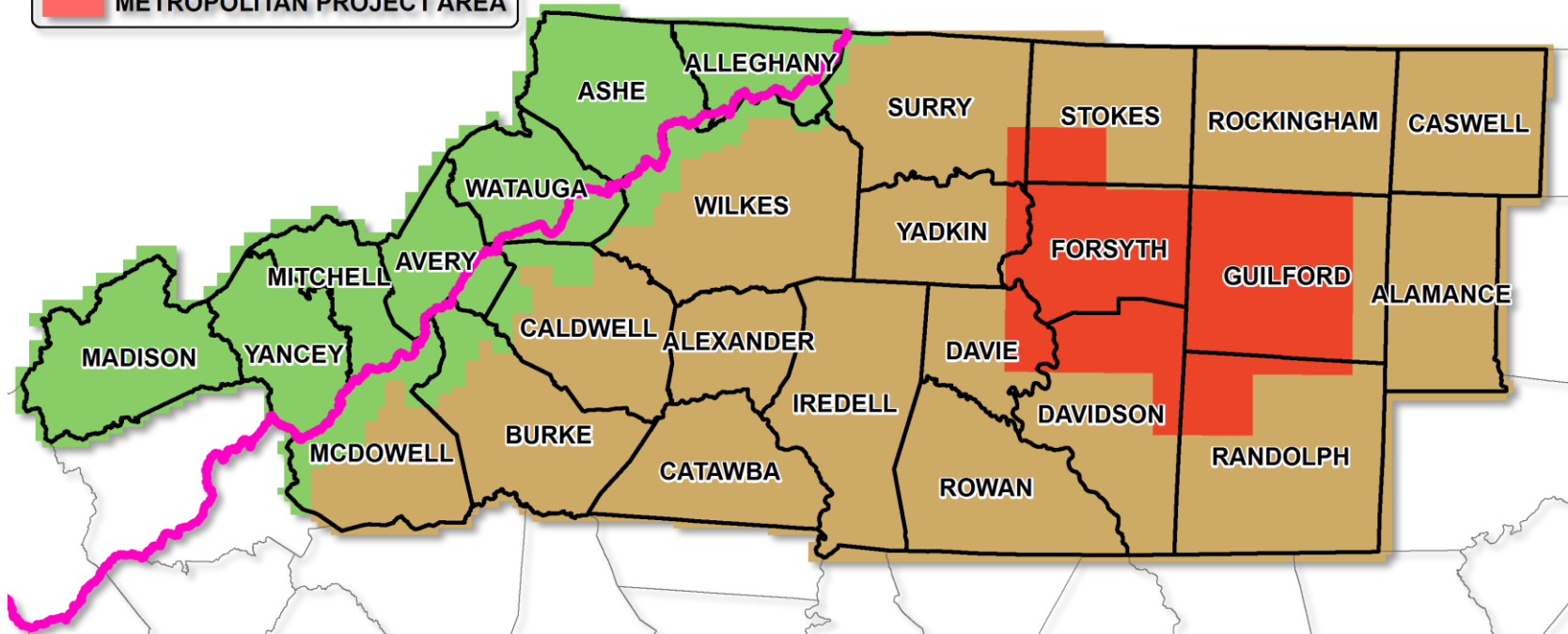
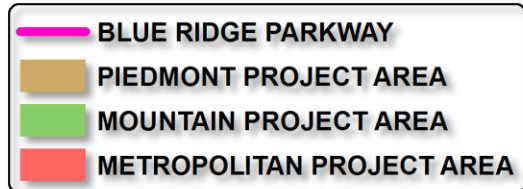
- 1** (Dark Green)
- 2** (Yellow)
- 3** (Red)

**July 31**  
**August 14**  
**August 28**





# Northern Piedmont and Mountains 2018



- Approved March 31
- Target Earlier RFQ and Contractor Procurement
- Local Government Opportunity

# *Questions?*

Darrin Smith  
Technical Project Manager  
919.754.6589  
[darrin.smith@nc.gov](mailto:darrin.smith@nc.gov)

Tim Johnson  
CGIA Director  
919.754.6588  
[tim.johnson@nc.gov](mailto:tim.johnson@nc.gov)