



*Statewide Orthoimagery Program
Eastern Piedmont 2017
Northern Piedmont & Mountains 2018*

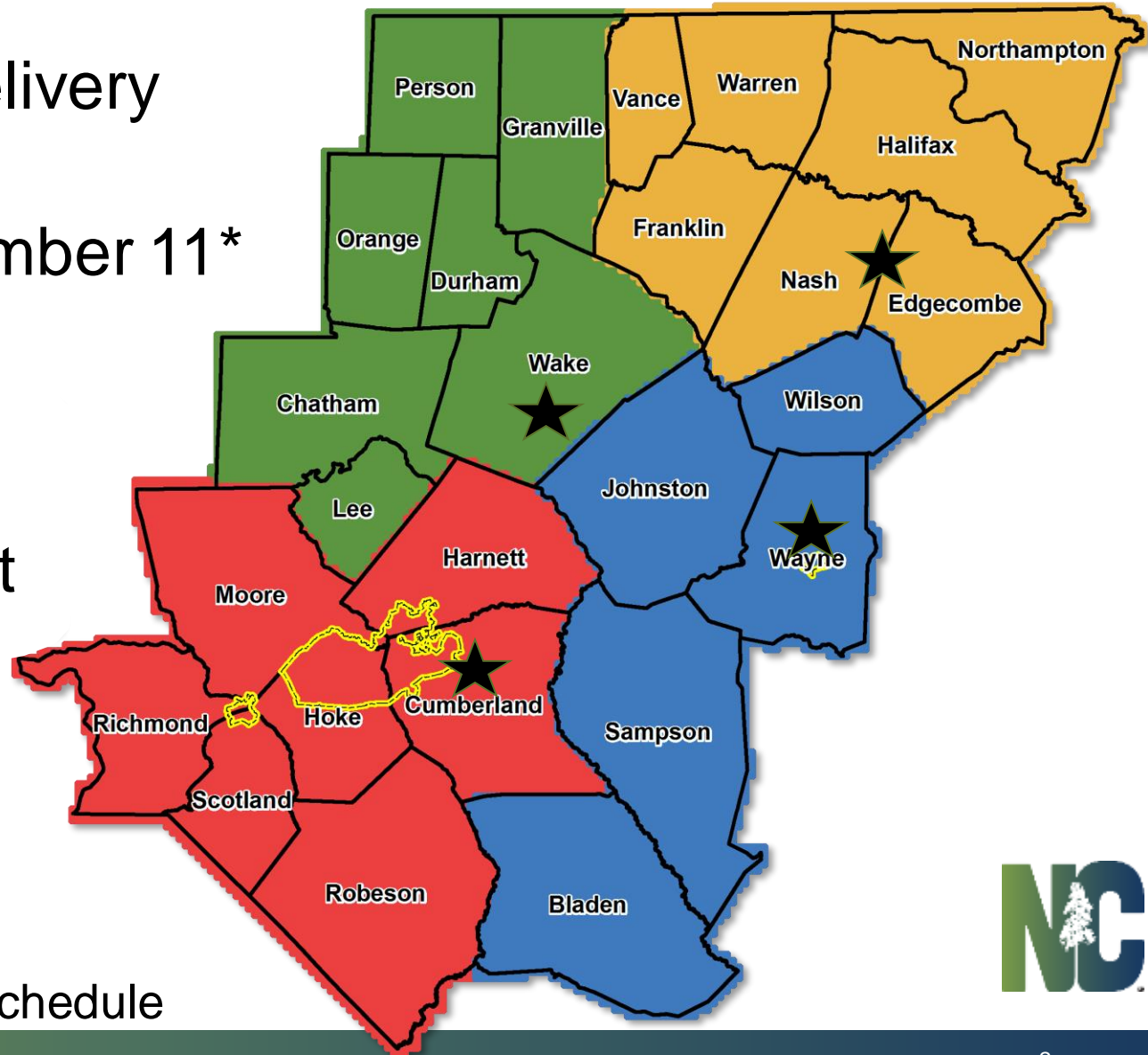
Statewide Mapping Advisory Committee
October 18, 2017



Eastern Piedmont 2017 Draft Delivery Schedule

- Final PSAP Delivery
- NC One Map
- Week of December 11*

1. Raleigh
2. Rocky Mount
3. Fayetteville
4. Goldsboro

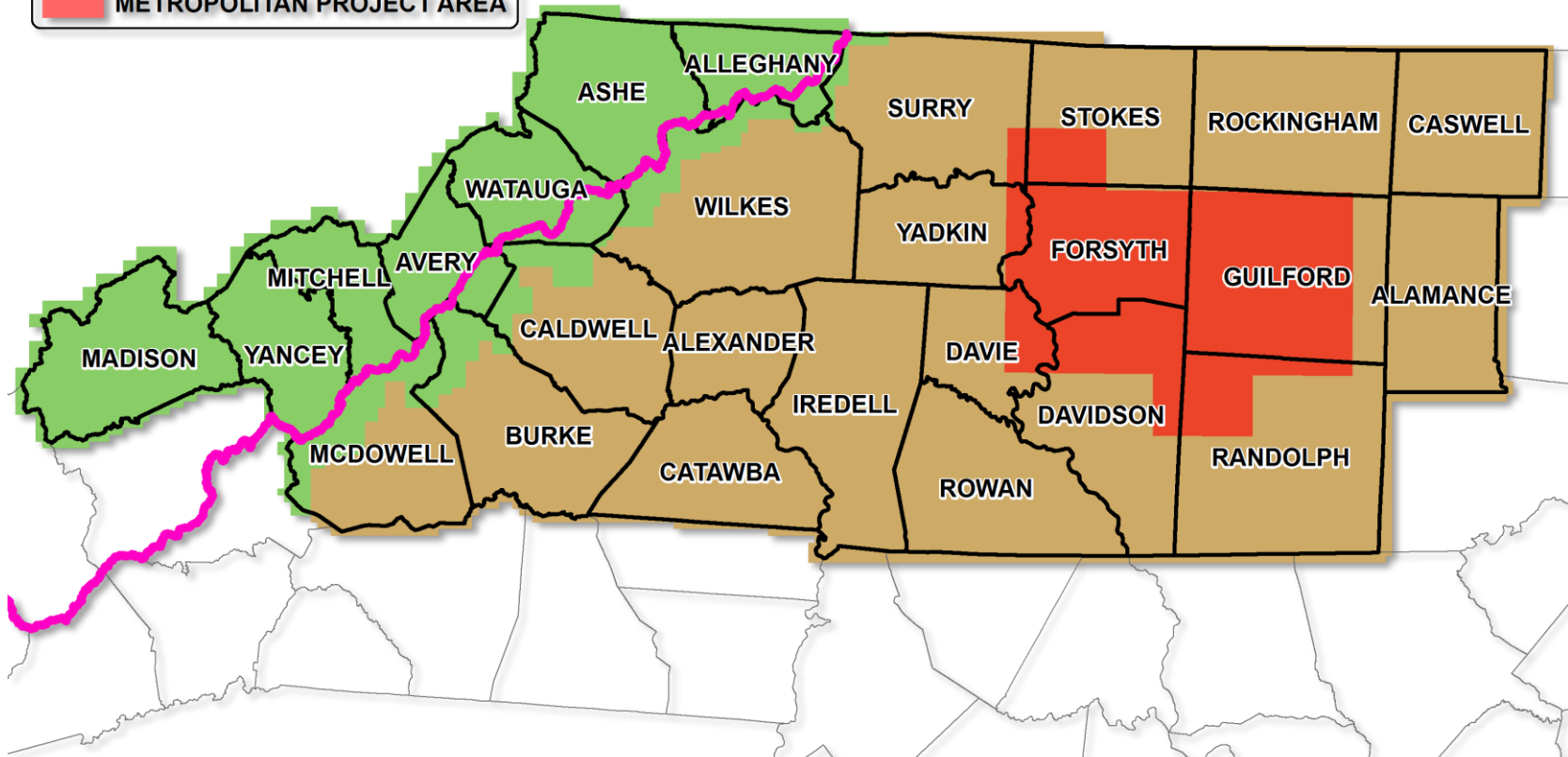
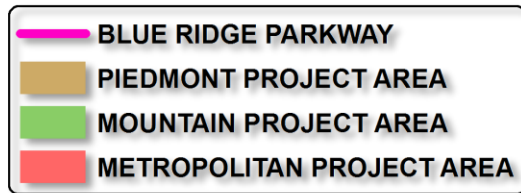


*Six weeks ahead of schedule



Northern Piedmont and Mountains 2018

1. Atlas Geographic Data
2. Sanborn Map Company
3. Spatial Data Consultants
4. Surdex Corporation



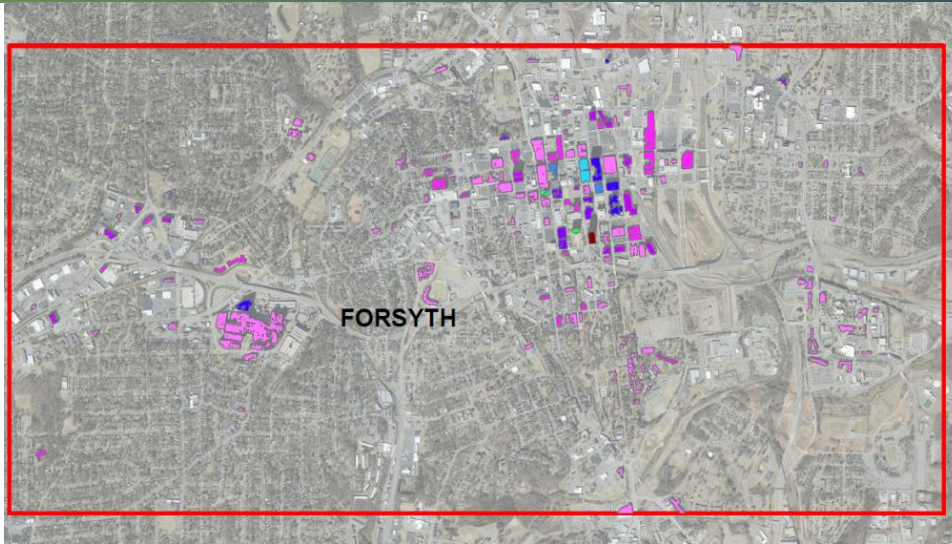
Northern Piedmont and Mountains 2018

- Target Procurement December 1*
- Local Government Opportunity
- True Ortho Focus

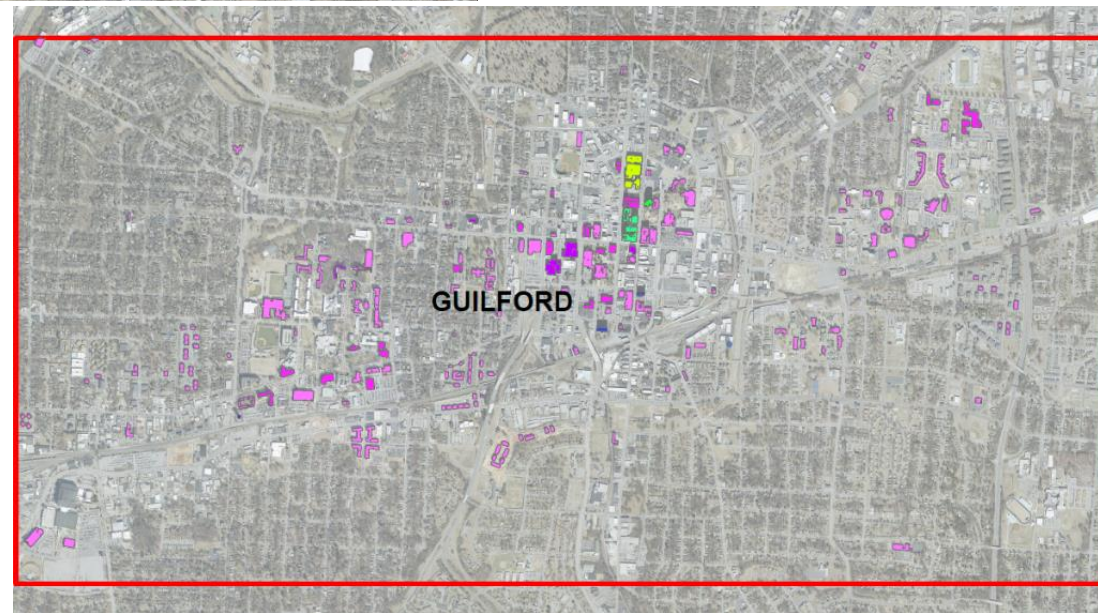
*Three weeks ahead of schedule



Northern Piedmont and Mountains 2018



- Value to the Board
- Existing NADIR Specs
- Minimal Focus/Cost
 - Structures > 40'



Building_Height	
0.150861 - 20.000000	
20.000001 - 40.000000	
40.000001 - 60.000000	
60.000001 - 80.000000	
80.000001 - 100.000000	
100.000001 - 120.000000	
120.000001 - 140.000000	
140.000001 - 160.000000	
160.000001 - 180.000000	
180.000001 - 200.000000	
200.000001 - 220.000000	
220.000001 - 240.000000	
240.000001 - 260.000000	
260.000001 - 280.000000	
280.000001 - 300.000000	
300.000001 - 320.000000	
320.000001 - 340.000000	
340.000001 - 360.000000	
360.000001 - 380.000000	
380.000001 - 400.000000	
400.000001 - 420.000000	
420.000001 - 440.000000	
440.000001 - 460.000000	

Northern Piedmont and Mountains 2018



Questions?

Darrin Smith
Technical Project Manager
919.754.6589
darrin.smith@nc.gov

Tim Johnson
CGIA Director
919.754.6588
tim.johnson@nc.gov