

# Statewide Orthoimagery Program

Northern Piedmont and Mountains  
2018

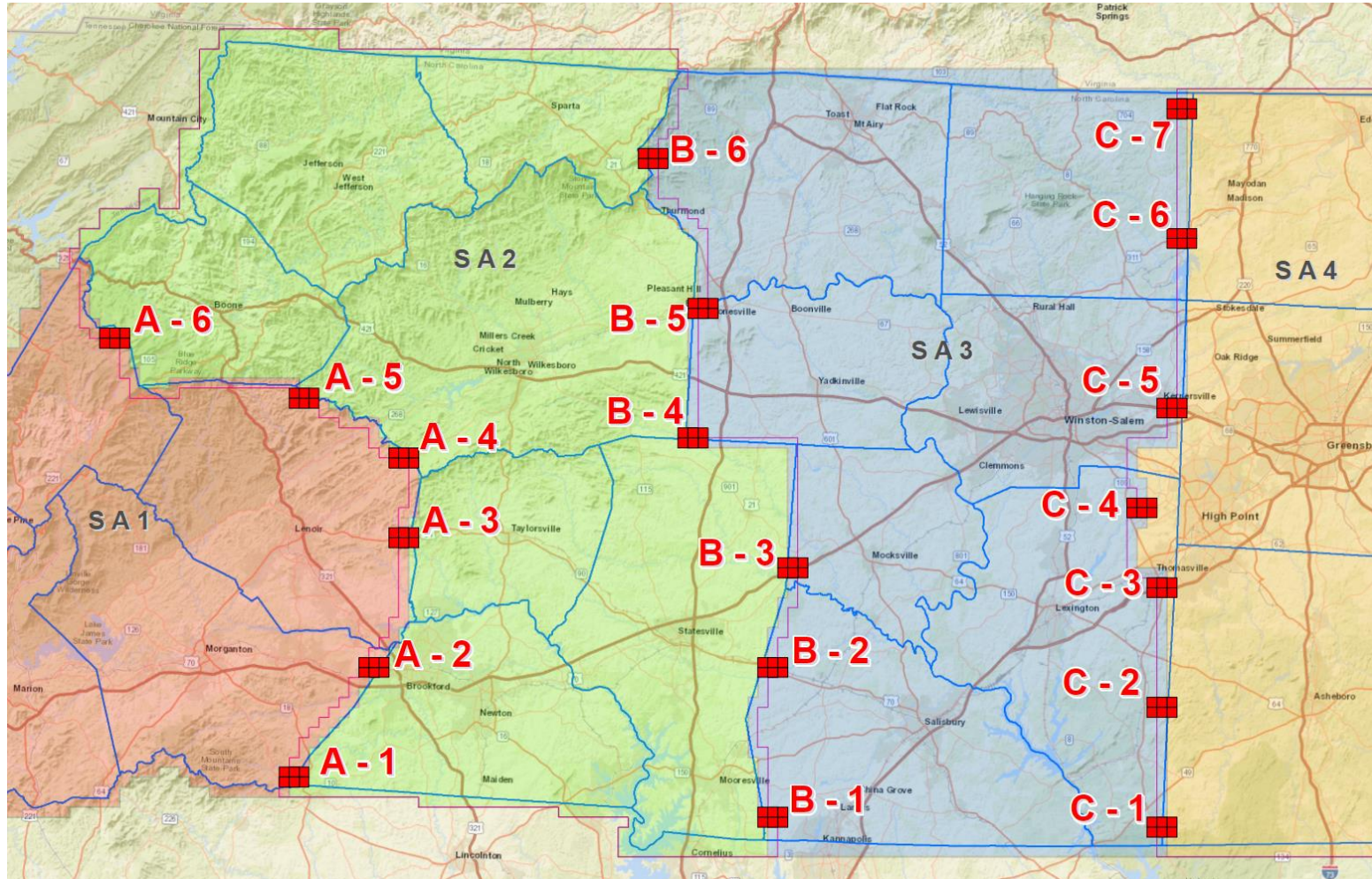
Southern Piedmont and Mountains  
2019

*July 18, 2018*



# Northern Piedmont and Mountains 2018

- 4/19 – Ortho Gen Workshop with vendors
  - Radiometry samples



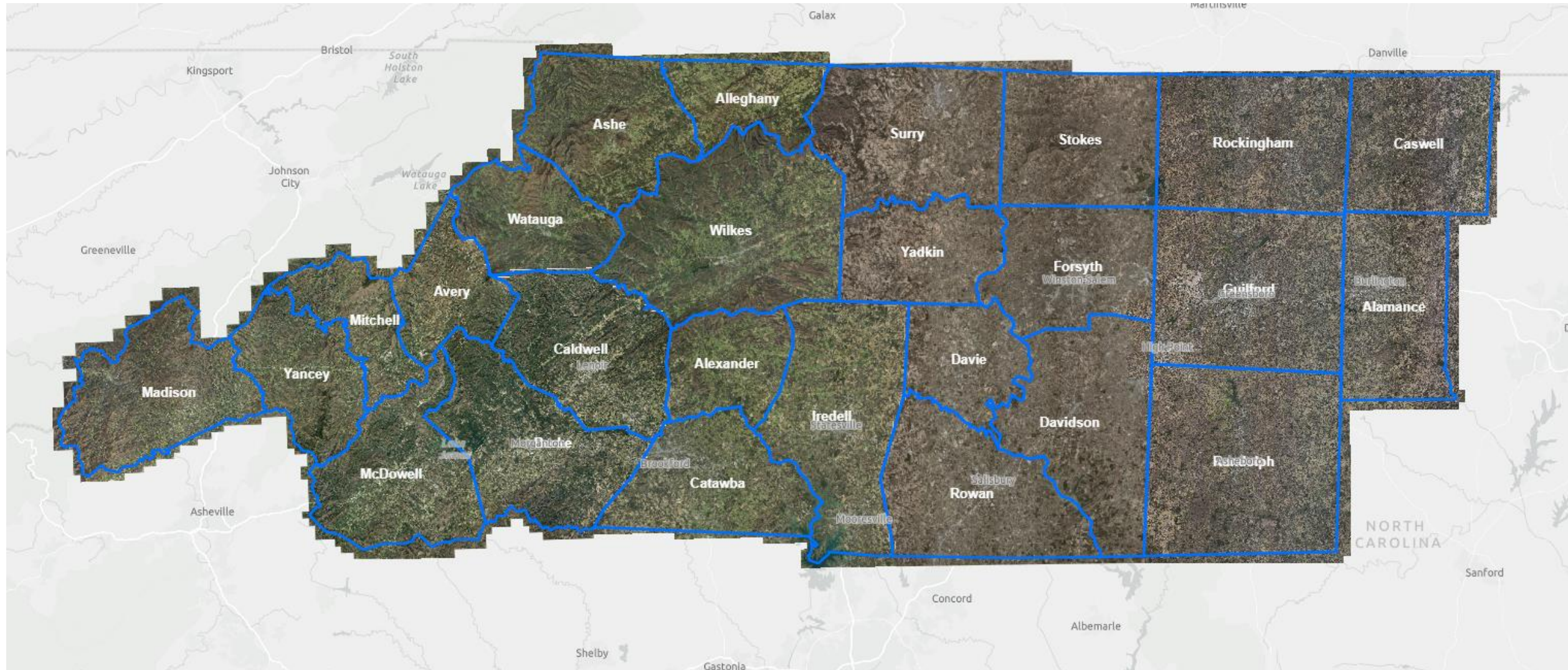


SA3

SA4

# Northern Piedmont and Mountains 2018

- Preliminary Image Services
  - Used to assess final Radiometry across each Study Area

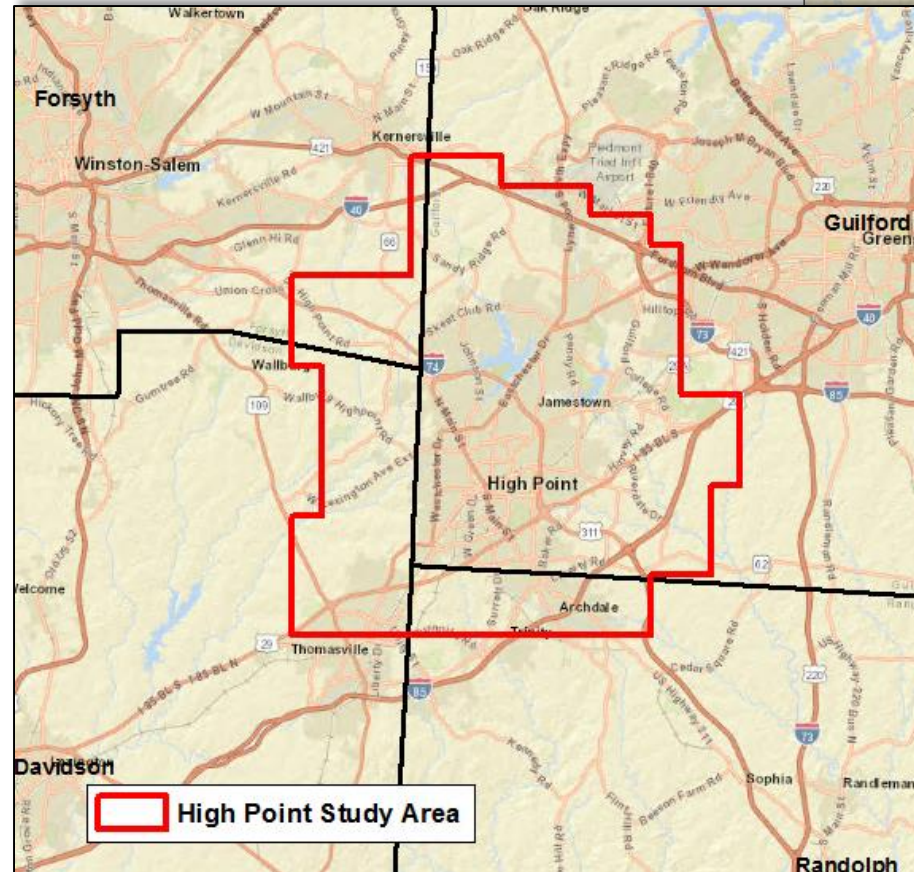
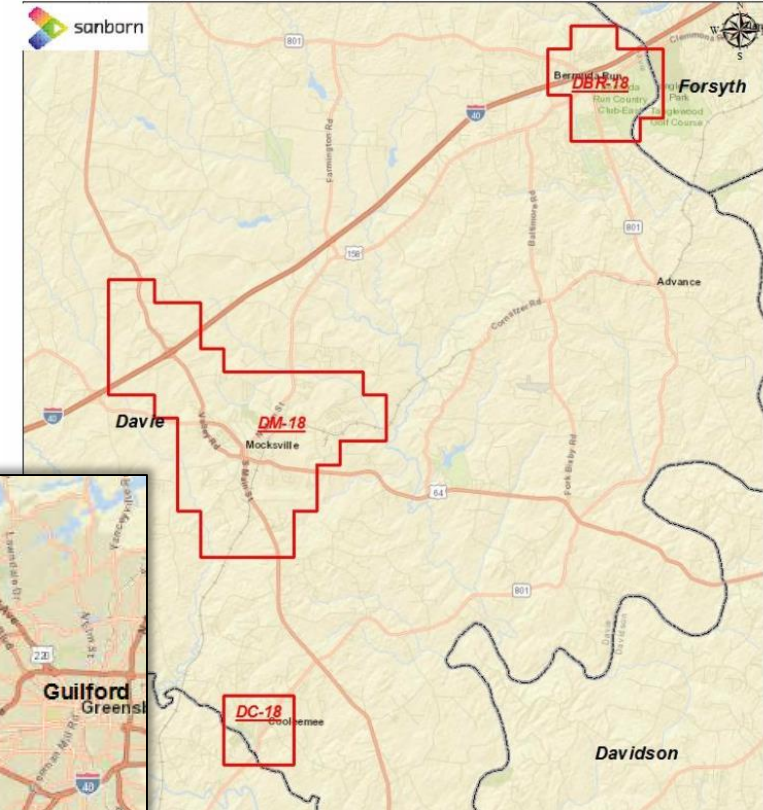


# NPM 2018

## Local Piggyback Projects:

- 3" Orthos:
  - High Point
  - Davie County – Mocksville, Cooleemee, and Bermuda Run
  - Boone
- Planimetrics/Building Footprints:
  - Forsyth County
  - Davie County
  - Davidson County
- CIR Interest: (No formal Agreement)
  - Davie County
  - Lexington

NPM18 - SA3 - 3-inch Areas  
Mocksville, Cooleemee and Bermuda Run - Study Areas



# NPM18 - Schedule

**7/24 @ 10AM**

- VOICE Training Webinar

**7/30 – 10/25**

- VOICE review

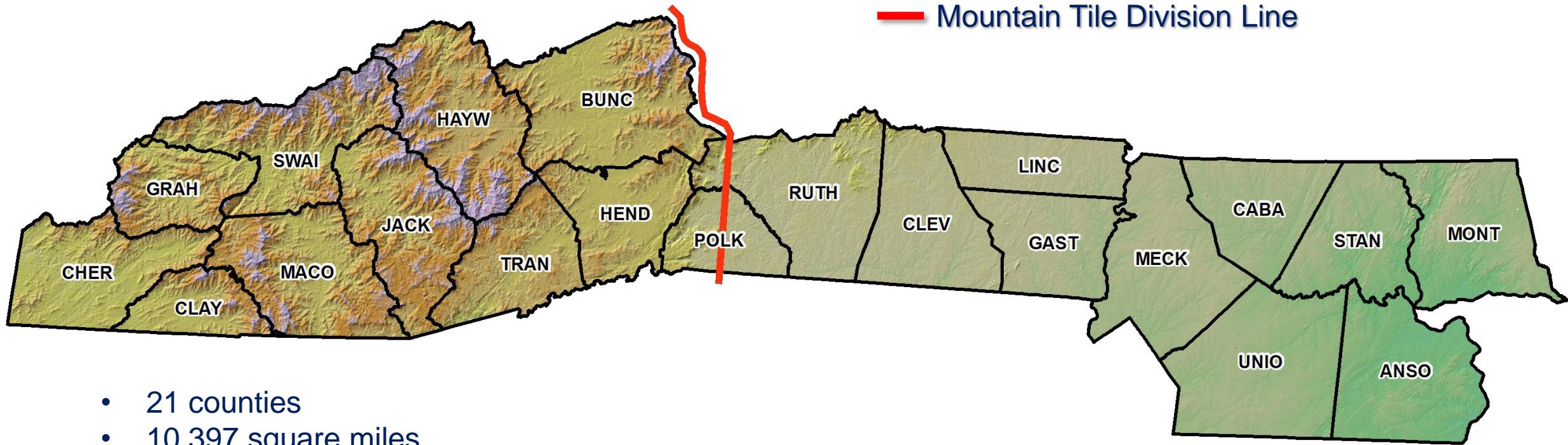
**Early December**

- Final products delivered and image services available through NC Onemap

2018 Orthoimagery Review Schedule			
County	Deliv Week	County Data Review Start	County Data Review End
Burke	1	30-Jul	24-Aug
Caldwell	1	30-Jul	24-Aug
Alexander	1	30-Jul	24-Aug
Catawba	1	30-Jul	24-Aug
Davidson	1	30-Jul	24-Aug
Forsyth	1	30-Jul	24-Aug
Caswell	1	30-Jul	24-Aug
Rockingham	1	30-Jul	24-Aug
Avery	2	13-Aug	7-Sep
McDowell	2	13-Aug	7-Sep
Iredell	2	13-Aug	7-Sep
Wilkes	2	13-Aug	7-Sep
Davie	2	13-Aug	7-Sep
Rowan	2	13-Aug	7-Sep
Alamance	2	13-Aug	7-Sep
Randolph	2	13-Aug	7-Sep
Madison	3	27-Aug	21-Sep
Mitchell	3	27-Aug	21-Sep
Yancey	3	27-Aug	21-Sep
Alleghany	3	27-Aug	21-Sep
Ashe	3	27-Aug	21-Sep
Watauga	3	27-Aug	21-Sep
Stokes	3	27-Aug	21-Sep
Surry	3	27-Aug	21-Sep
Yadkin	3	27-Aug	21-Sep
Guilford	3	27-Aug	21-Sep

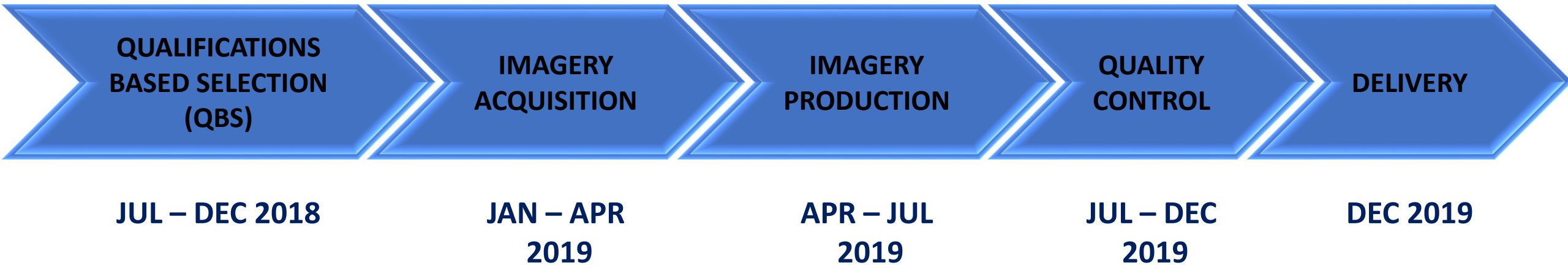


# Southern Piedmont and Mountains 2019



- 21 counties
- 10,397 square miles
- 50% of project are considered Mountain Tiles

# Project Timeline





# Questions?

Ben Shelton

919.754.6377

[Ben.Shelton@nc.gov](mailto:Ben.Shelton@nc.gov)

[www.nconemap.gov/orthoimagery.aspx](http://www.nconemap.gov/orthoimagery.aspx)

