



NC OneMap Update

Geographic Information Coordinating Committee
20 July 2016



Download and Web Service Updates

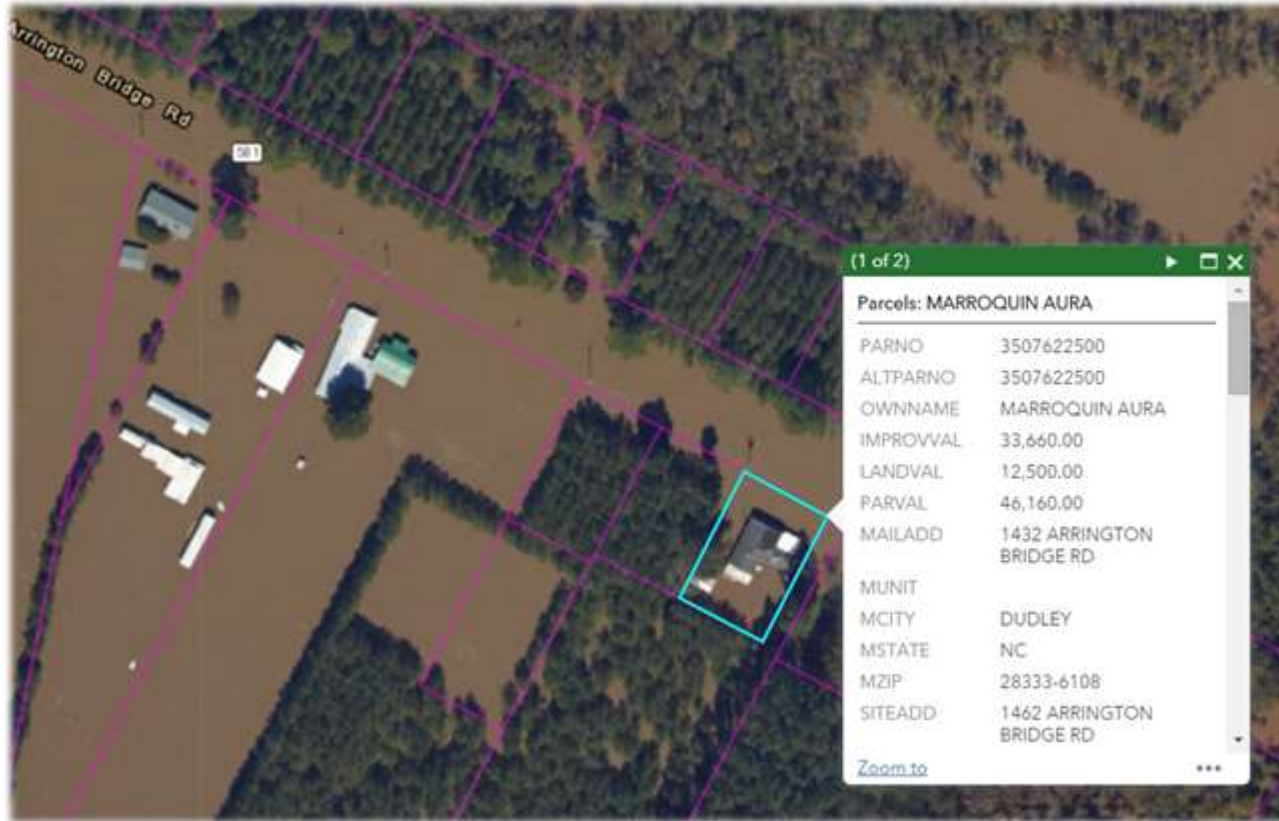
Since Last GICC Meeting



Data Set	Custodian
Federal Lands	DEQ/Natural Heritage Program
Managed Areas	DEQ/Natural Heritage Program
Natural Heritage Element Occurrences	DEQ/Natural Heritage Program
Natural Heritage Program Natural Areas	DEQ/Natural Heritage Program



Hurricane Matthew Response



- **Key Data:**

- Updated parcels for affected counties
- Exposed 2016 orthoimagery

- **Usage Statistics (Duration 10/5 – 11/1):**

- NC OneMap Imagery: “Orthoimagery latest” – Almost 8 million hits (~2 million/week avg.). Typical week is 1-1.5 million hits
 - Peak was during 10/10 – 10/16 (immediate week after storm left NC). 2.5+ million hits. 2nd highest hit count for a week in the last 4 months.
- 2016 Imagery: Temporarily brought online to aid in disaster response. Almost 600k hits (~150k/week)
- NC Onemap Parcels: 240k+ hits (60k/week avg.) Typical week is 30-35k hits.





Questions?/Comments!

