



NC OneMap Update

GICC

5/8/13





Data Updates

- Federal Lands
- Significant Natural Heritage Areas
- Natural Heritage Element Occurrences
- Managed Areas
- Shellfish Growing Areas
- Significant Natural Heritage Areas
- Natural Heritage Element Occurrences
- Bridges
- County Boundaries (no shoreline)
- County Boundaries (with shoreline)
- DOT Division Boundaries
- DOT LRS Arcs
- DOT LRS Routes
- Powell Bill Municipal Boundaries
- DOT NCMIN Tiers
- DOT Road Characteristics
- Managed Areas



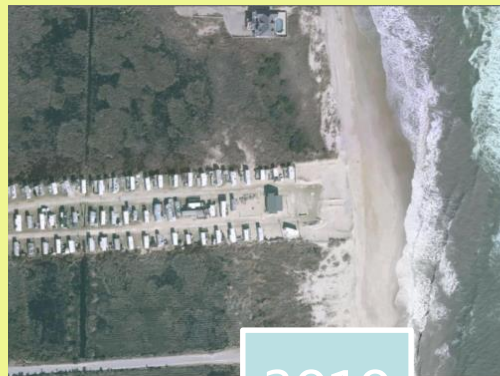


NC OneMap Servers

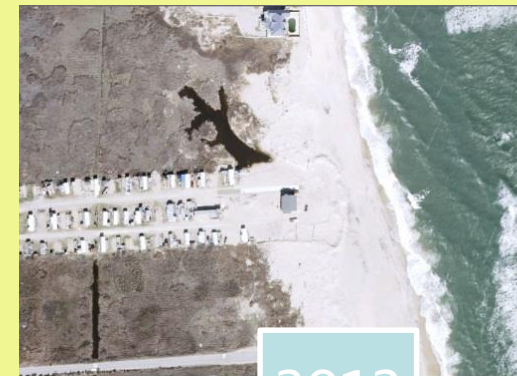
- Environment at WDC in Production
 - FTP running
 - NC OneMap website and all others (production Geoportal still at EDC)
- Will create “services.nconemap.com”
 - Combines imagery.nconemap.com (raster) and vector services at 149.168.87.13

2012 Imagery Update

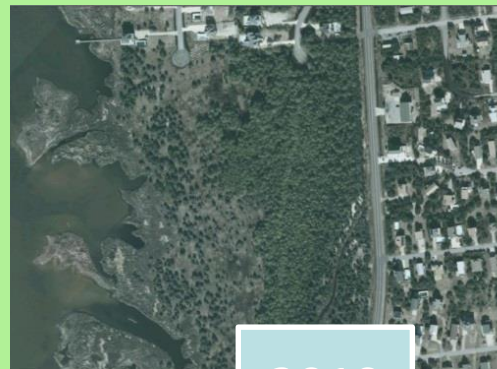
- Image Service
 - Imagery fully processed
 - Time-enabled service “99.9%” done (2012, 2010, and before)
 - Awaiting release on Geoportal
- Imagery Download
 - Several contractor modifications to Geoportal
 - 2 more enhancements remaining



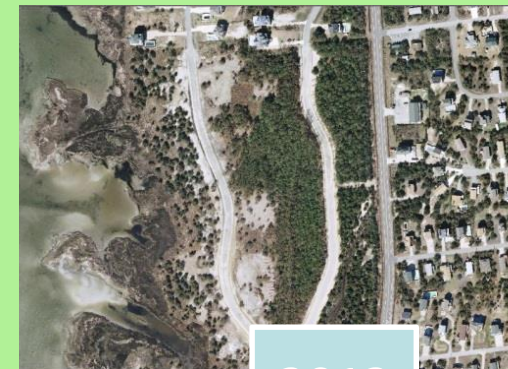
2010



2012



2010



2012





Questions/Comments

Contact:

Brett Spivey
NC OneMap Programmer
brett.spivey@nc.gov
919-754-6591

David Giordano
NC OneMap Database Administrator
david.giordano@nc.gov
919-754-6585