

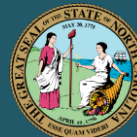
Municipal Boundaries Update

NC Department of the Secretary of State

Presentation to the GICC

May 8, 2019

Secretary of State
Elaine F. Marshall

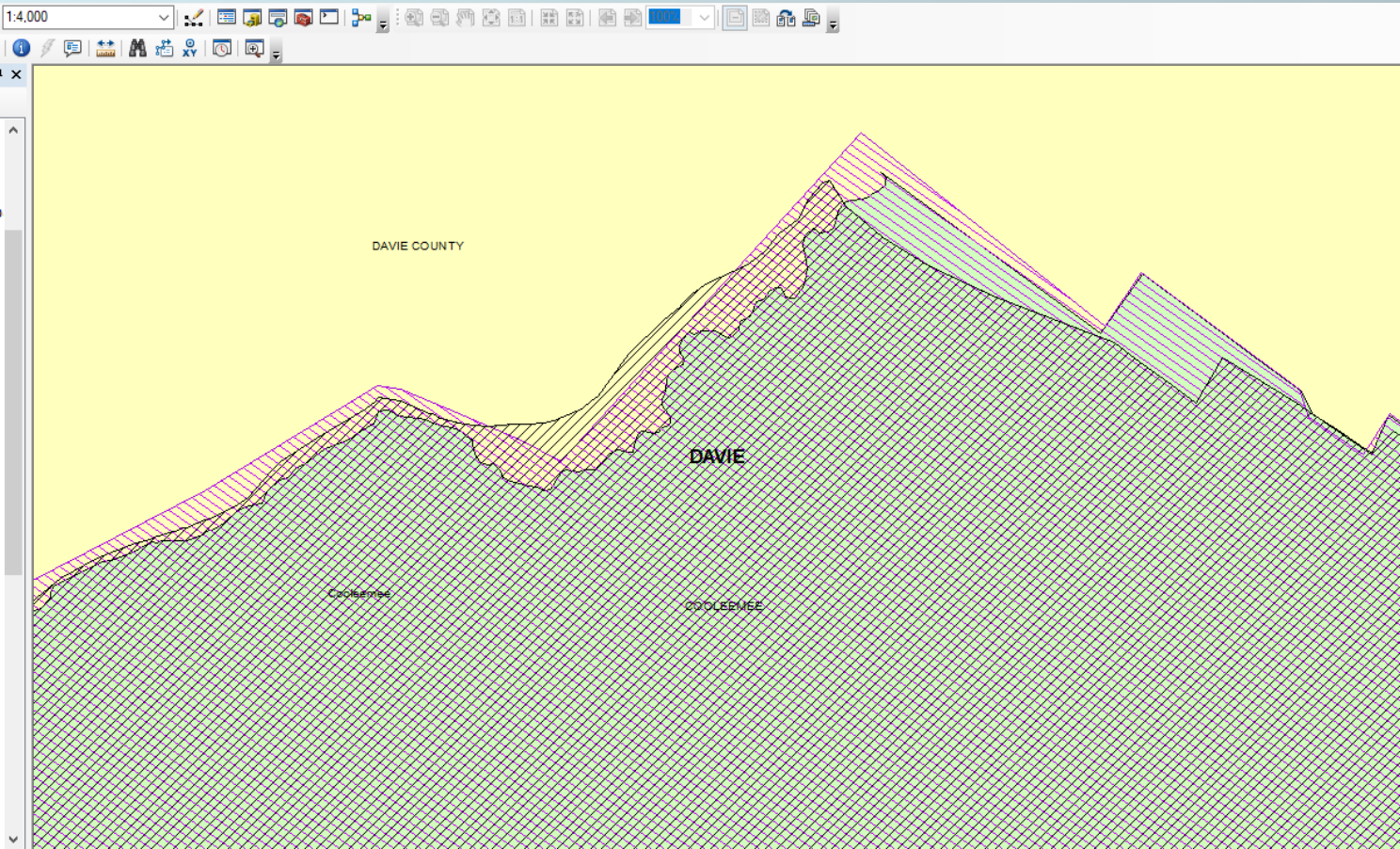


www.sosnc.gov

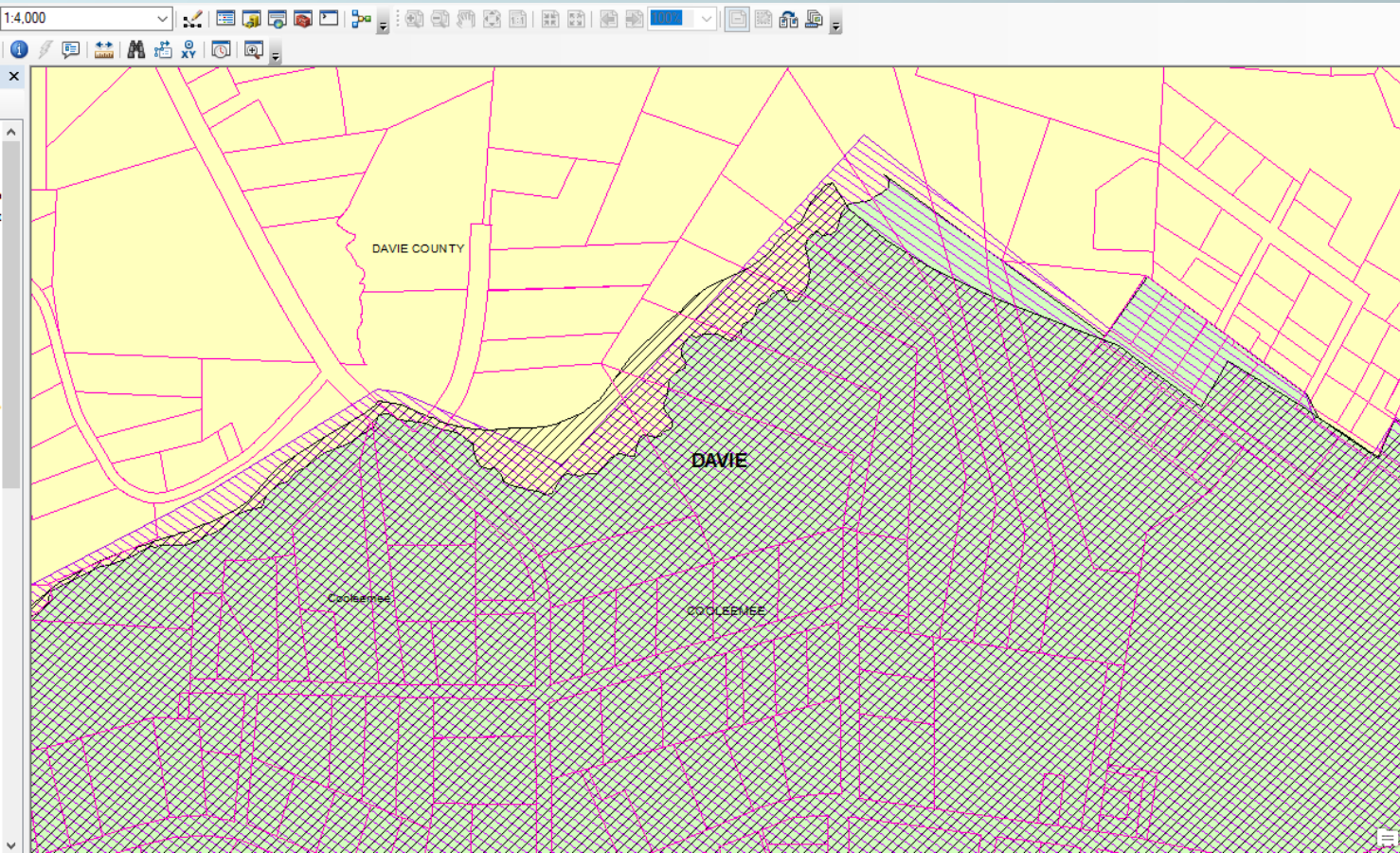
Background

- Haley Haynes – May 9, 2018
- Need for more complete, consistent, timely submission of annexation documents
- Affects US Census and Federal and State funding to municipalities
- Requested help from GICC
- Working Group formed
- Became one of five GICC priorities

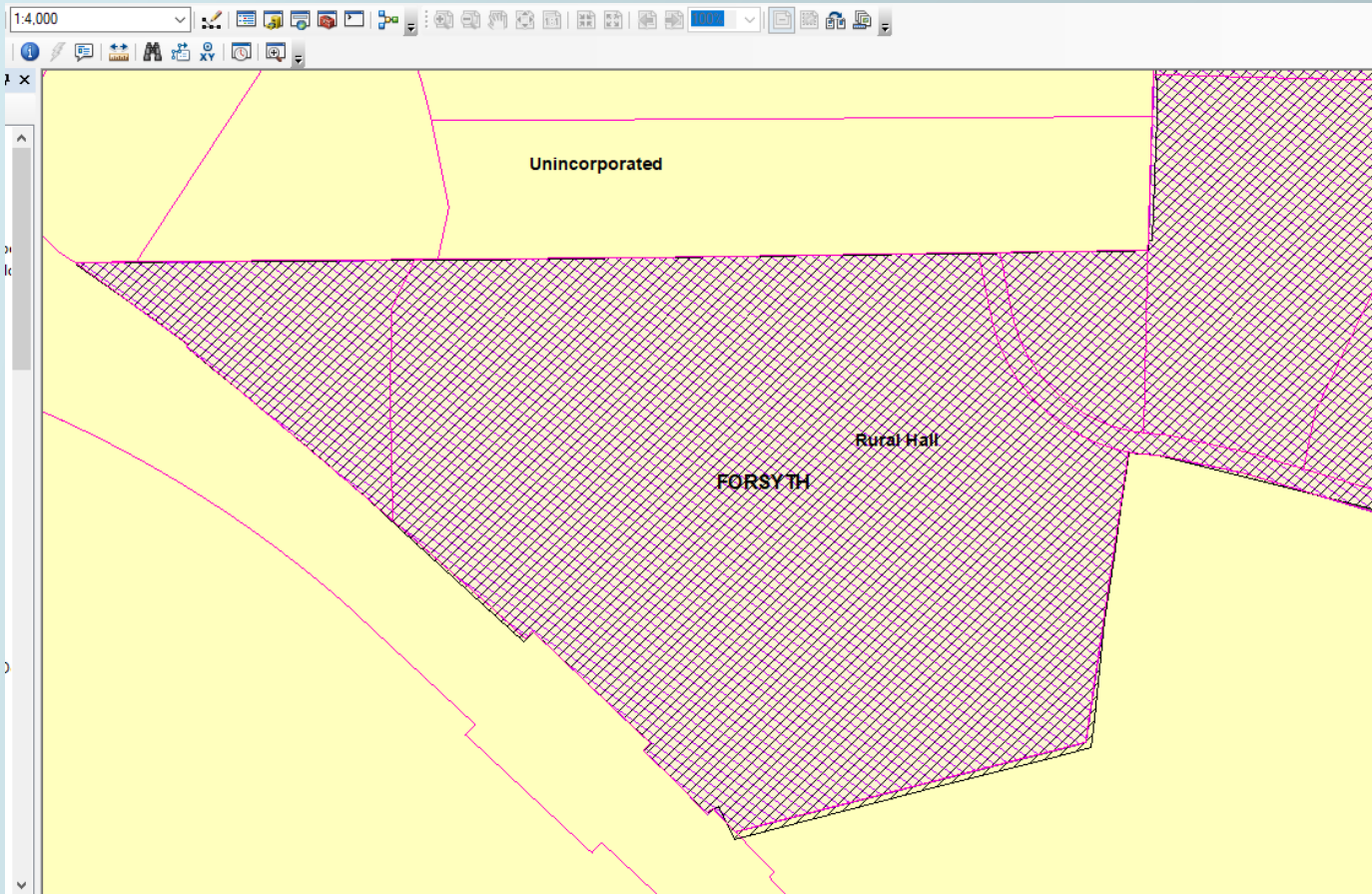
Municipal Boundaries



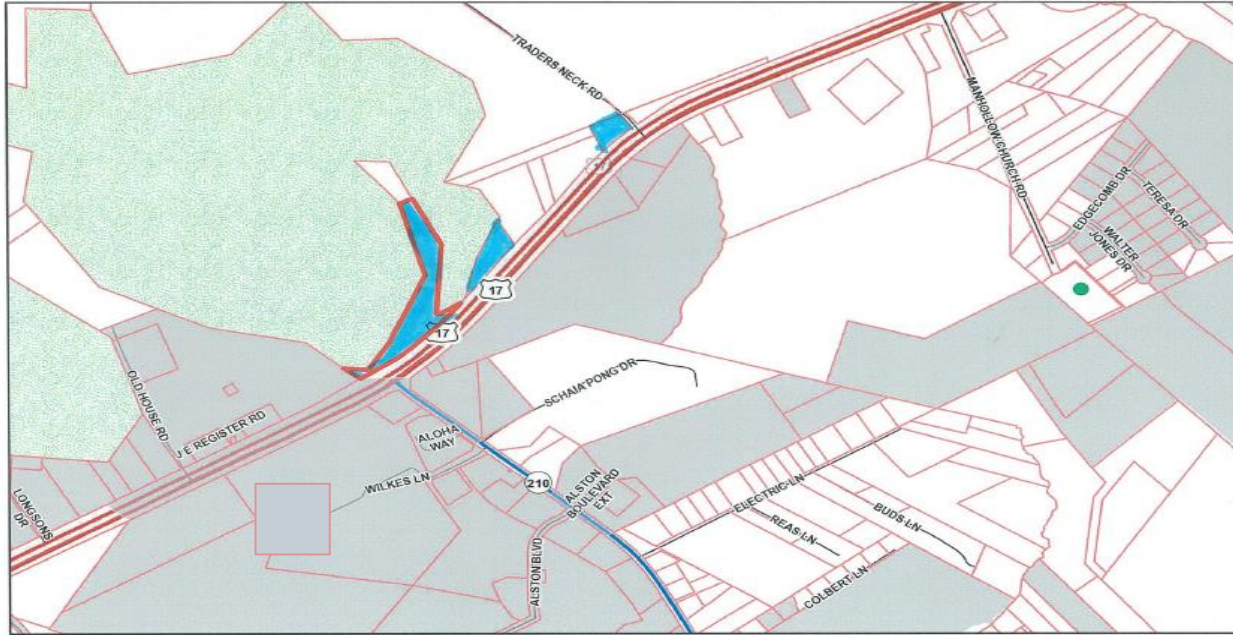
Current Sources



Current Sources



Annexation Maps



Annexation Maps



Findings

- Improvements are within reach
- Four-part solution
- Collaboration is underway
- Communication and promotion this year
- Learn from results before proposing changes in NC Statutes or rules

Four-Part Solution

1. Create a baseline dataset from the best available mapping
2. Improve the source maps created for annexations
3. Modify annexation data flows—from counties on behalf of municipalities
4. Update the statewide baseline data

Approaches

- NC DIT-Transportation and CGIA—create baseline for pilot jurisdictions
- NC Geodetic Survey—work with surveyors to promote more digital submissions
- Land Records Management Program—promote county submissions for annexations and BAS
- State agencies collaborate on data maintenance and publication via NC OneMap

Timetable

- 2019 – Develop, communicate, promote
- 2020 – Evaluate quality of the data flows
Are changes in mandates needed?
- 2021 – Revisit statutes and rules and propose changes if needed

Thank you

NC Department of the Secretary of State



Secretary of State
Elaine F. Marshall



www.sosnc.gov