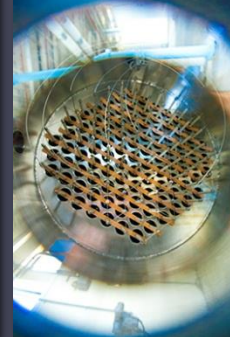
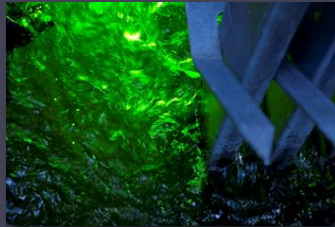




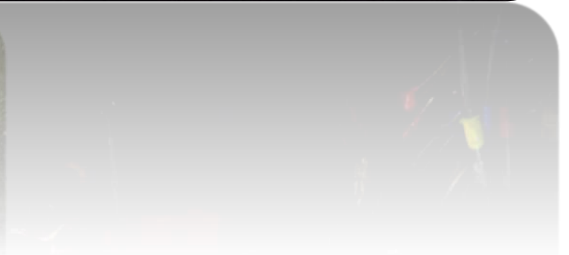
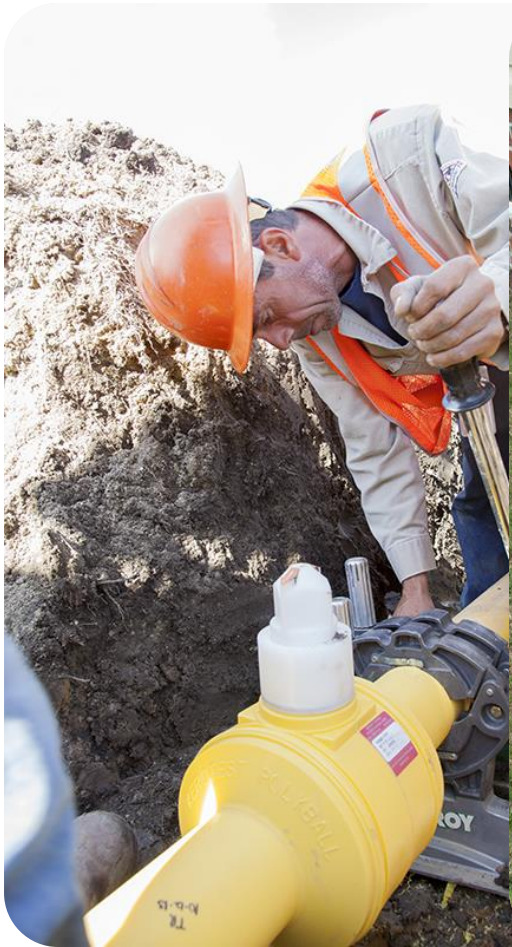
**Greenville  
Utilities**

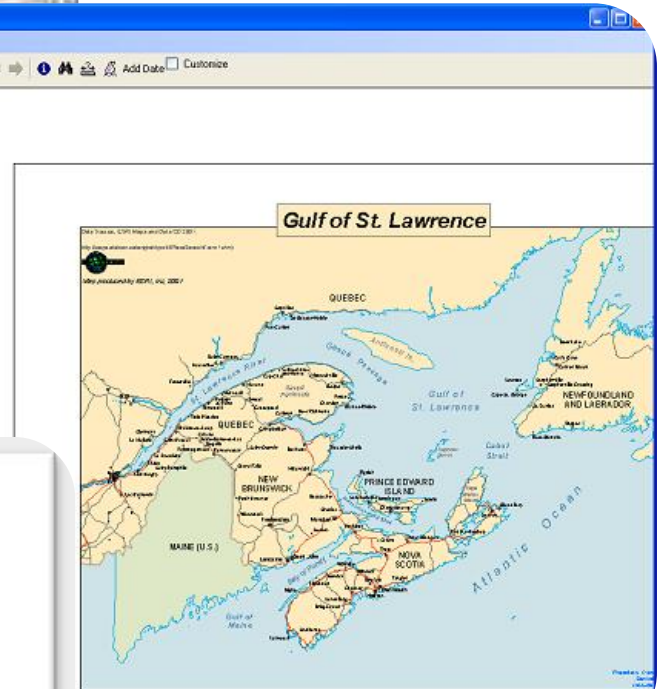


**GUC Self-Service GIS  
Anywhere and  
Everywhere**

# GUC: 107+ Years of Service

















## Folder: /

**Current Version:** 10.02

**View Footprints In:** [Google Earth](#)

### Folders:

- [Apps](#)
- [BaseMaps](#)
- [G2](#)
- [Geocoders](#)
- [GUC](#)
- [Layers\\_CISGIS](#)
- [Layers\\_Electric](#)
- [Layers\\_Gas](#)
- [Layers\\_Landbase](#)
- [Layers\\_Safety](#)
- [Layers\\_Sewer](#)
- [Layers\\_Water](#)
- [Layers\\_Weather](#)
- [TestServices](#)

### Services:

- [Geometry](#) (GeometryServer)
- [iQSBASEMap](#) (MapServer)

**Supported Interfaces:** [REST](#) [SOAP](#) [Sitemap](#) [Geo Sitemap](#)

## Folder: Layers\_Electric

**Current Version:** 10.02

**View Footprints In:** [Google Earth](#)

### Services:

- [Layers\\_Electric/BusBar](#) (MapServer)
- [Layers\\_Electric/CapacitorBank](#) (MapServer)
- [Layers\\_Electric/CircuitBreaker](#) (MapServer)
- [Layers\\_Electric/DistributionTransformer](#) (MapServer)
- [Layers\\_Electric/EATerritories](#) (MapServer)
- [Layers\\_Electric/ElectricAreasServed](#) (MapServer)
- [Layers\\_Electric/ElectricStation](#) (MapServer)
- [Layers\\_Electric/FaultIndicator](#) (MapServer)
- [Layers\\_Electric/Fiber](#) (MapServer)
- [Layers\\_Electric/Fuses](#) (MapServer)
- [Layers\\_Electric/Generator](#) (MapServer)
- [Layers\\_Electric/HandHole](#) (MapServer)
- [Layers\\_Electric/OpenPoints](#) (MapServer)
- [Layers\\_Electric/PrimaryOverhead](#) (MapServer)
- [Layers\\_Electric/PrimaryUnderground](#) (MapServer)
- [Layers\\_Electric/Recloser](#) (MapServer)
- [Layers\\_Electric/SecondaryOverhead](#) (MapServer)
- [Layers\\_Electric/SecondaryUnderground](#) (MapServer)
- [Layers\\_Electric/Sectionalizer](#) (MapServer)
- [Layers\\_Electric/ServicePoint](#) (MapServer)



Public

Internal

Select a Category ▼



AssetViewer

Internal

Reinstall



Markup

Internal

Reinstall



OutageMap

Internal

Reinstall



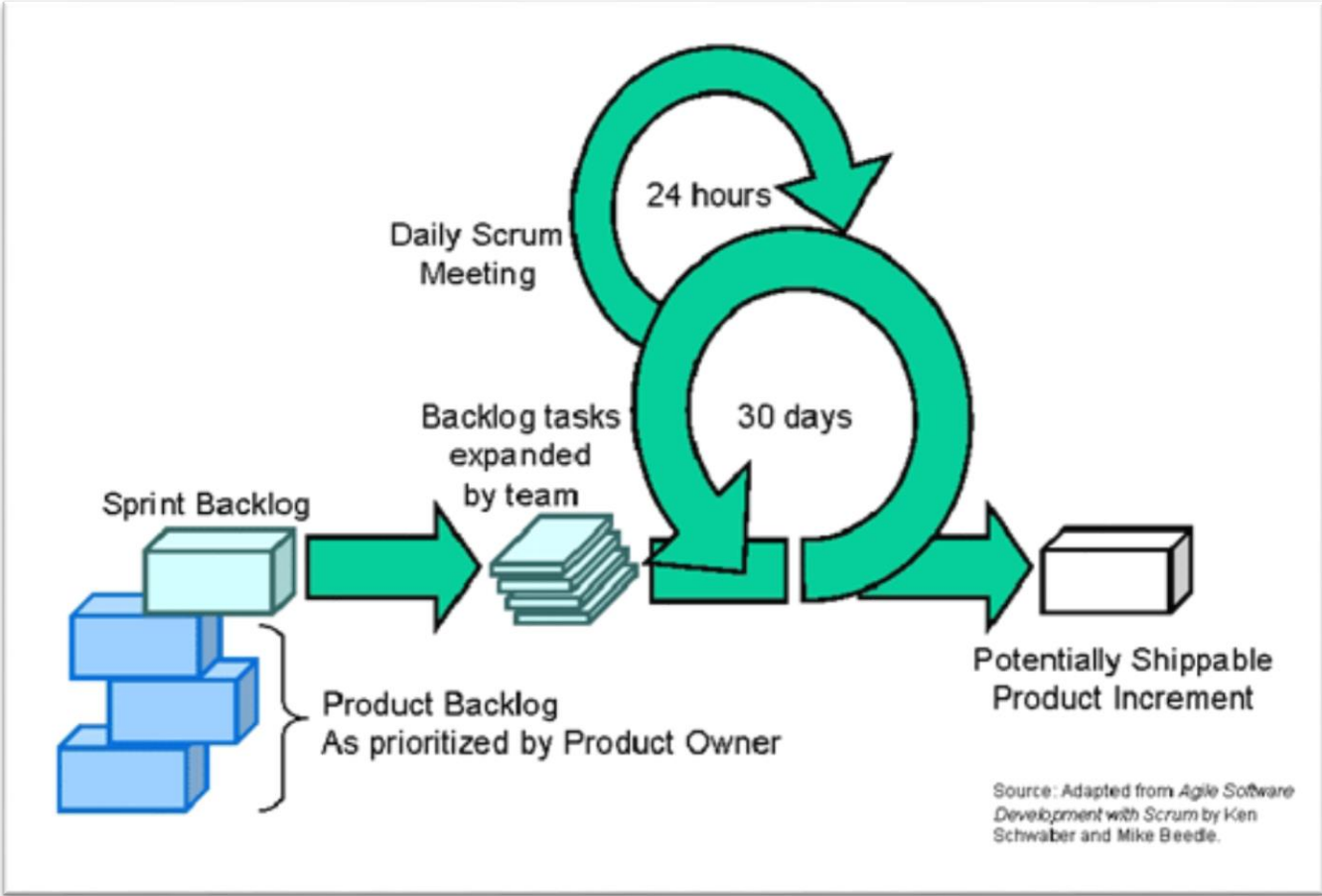
SCADADash

Internal

Reinstall

View All







GUC Apps



AssetViewer



Markup



Safari



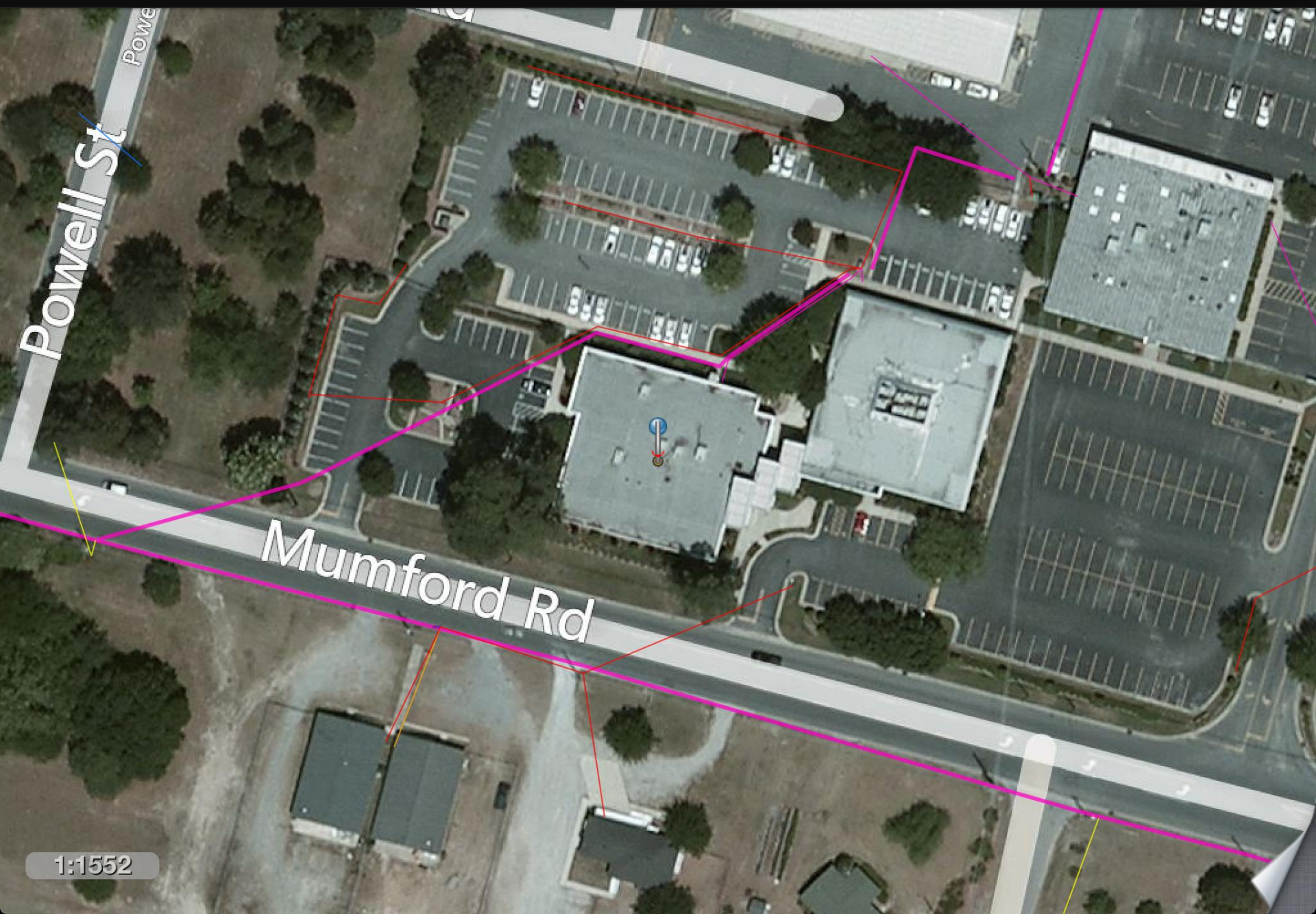
Mail



Photos



Music





Map Drawer

# Map Services

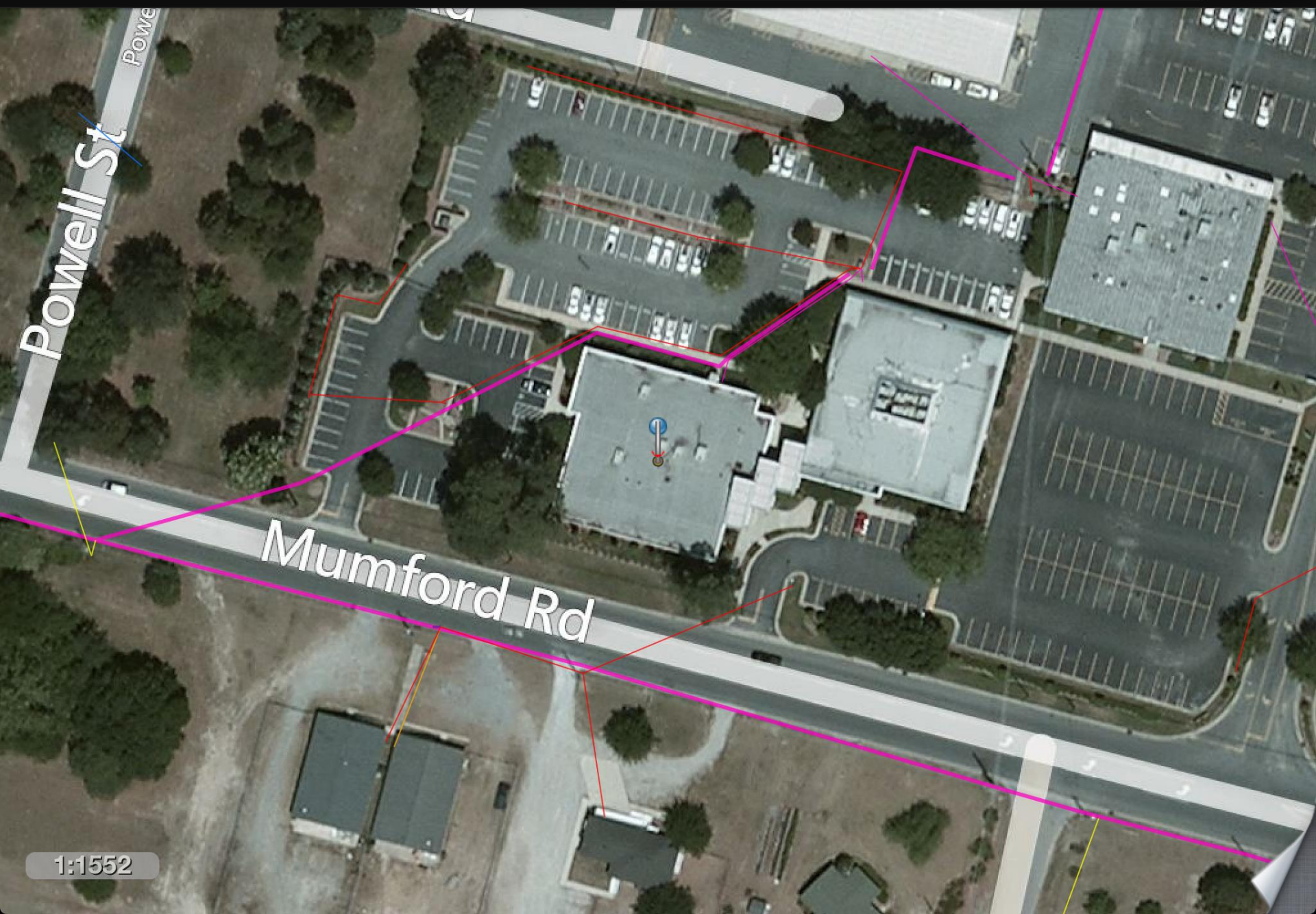


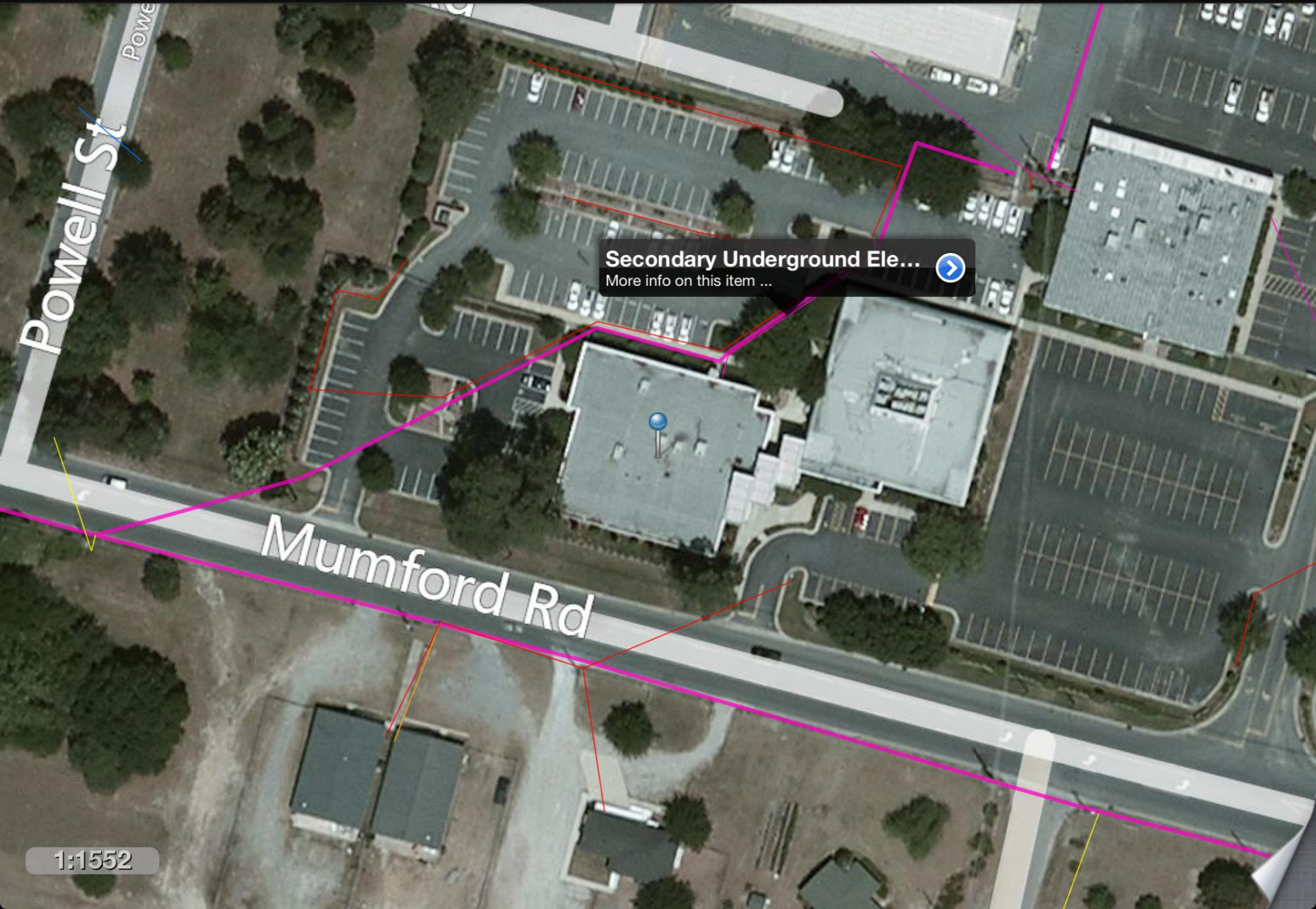
Cancel

- BusBar
- CapacitorBank
- CircuitBreaker
- DistributionTransformer
- EATerritories
- ElectricAreasServed
- ElectricStation
- FaultIndicator
- Fiber
- Fuses
- Generator
- HandHole
- OpenPoints
- PrimaryOverhead ✓
- PrimaryUnderground ✓









**Secondary Underground Ele...**  
More info on this item ...

Done

**Enabled**

True

**Installation Date**

**Length Source**

Mapping System

**Measured Length**

**SUBTYPECD**

2

**WorkorderID**

**Conductor Material**

AL

**Conductor Size**

350 Triplex

**Electric Line ObjectID**

**Neutral Material**

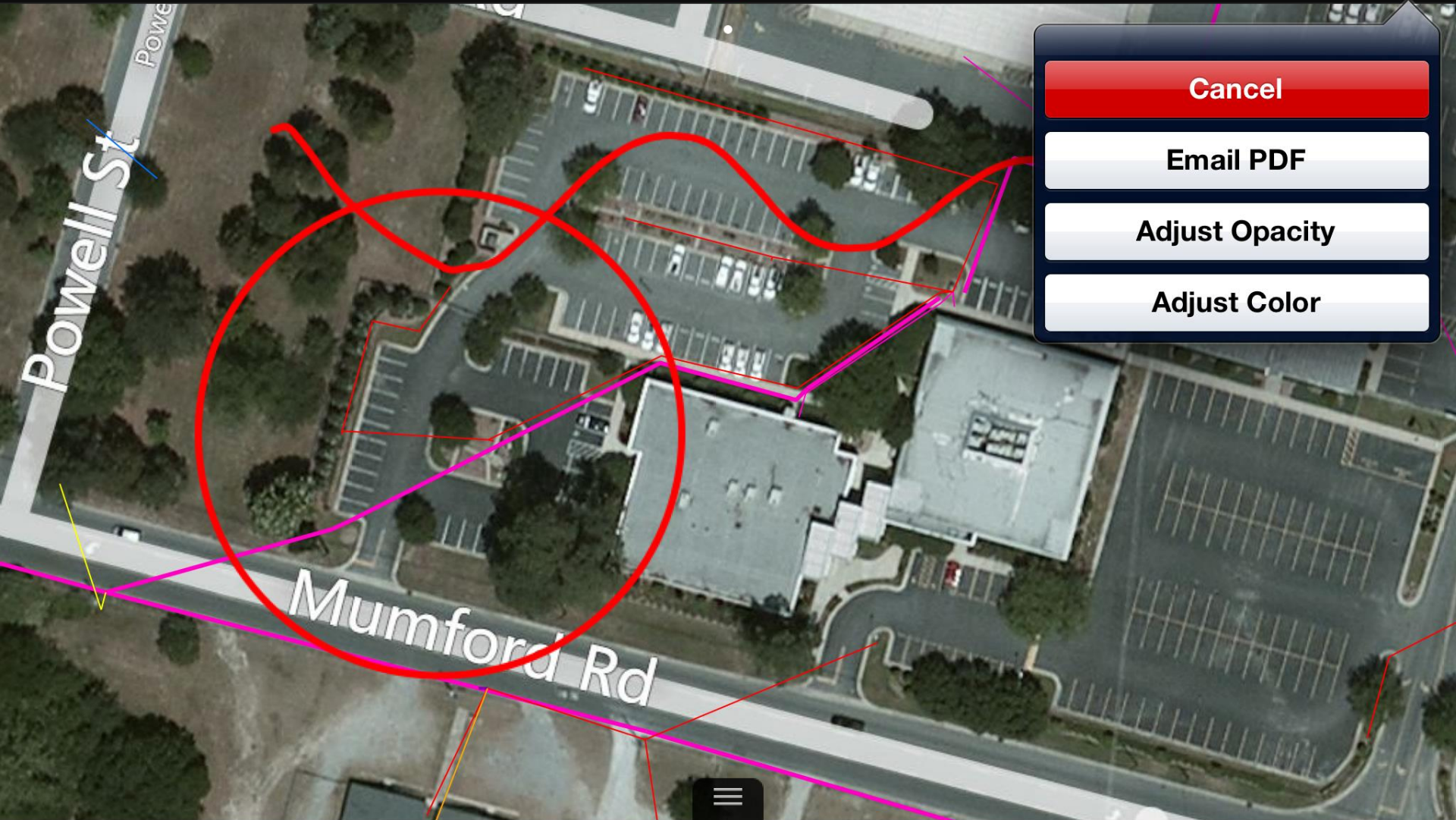
Aluminum

**Neutral Size**

1/0 AWC



# Markup



Cancel  
Email PDF  
Adjust Opacity  
Adjust Color

Aa

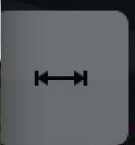
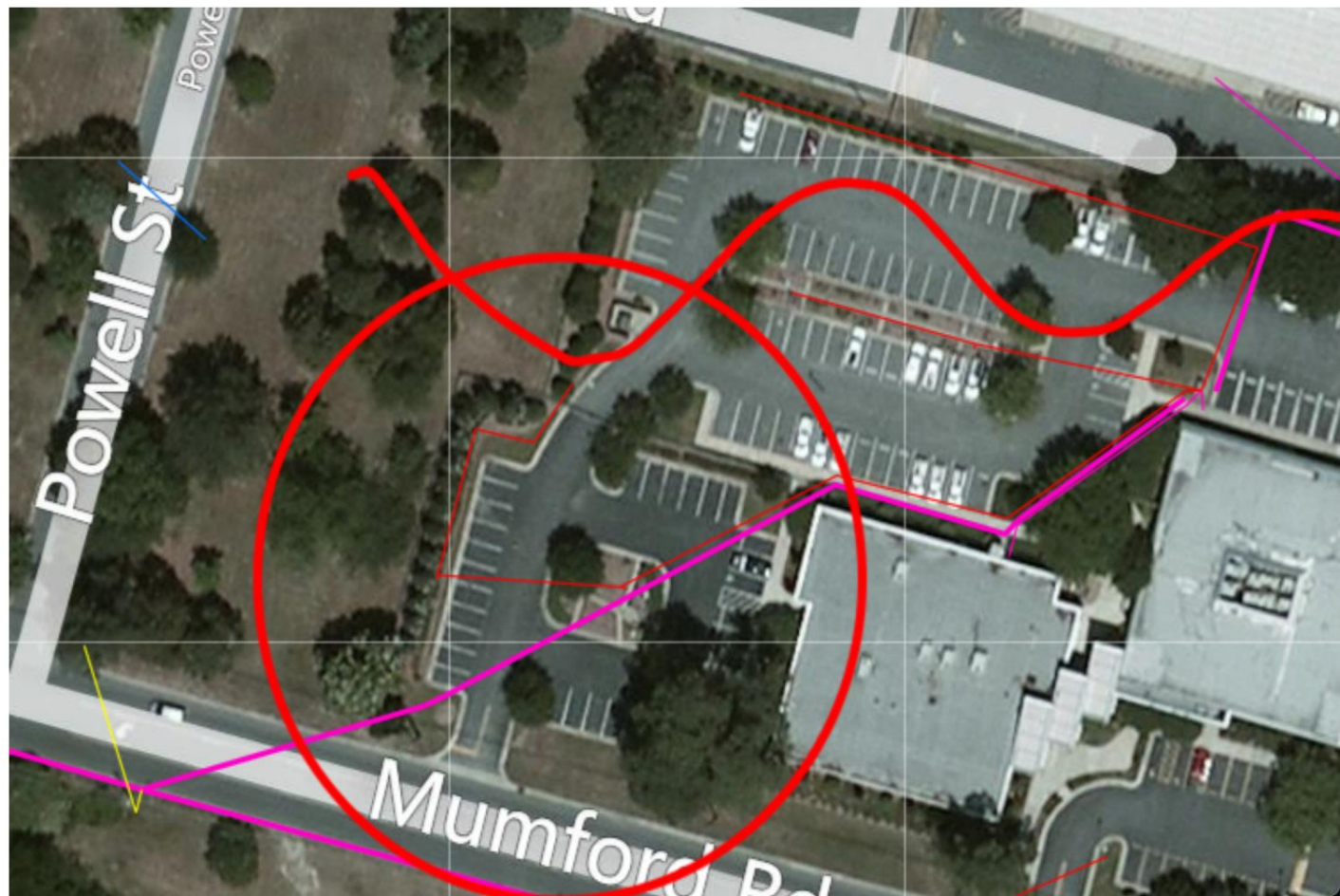
Cancel Check out my markup created with GUC Markup for iPad Send

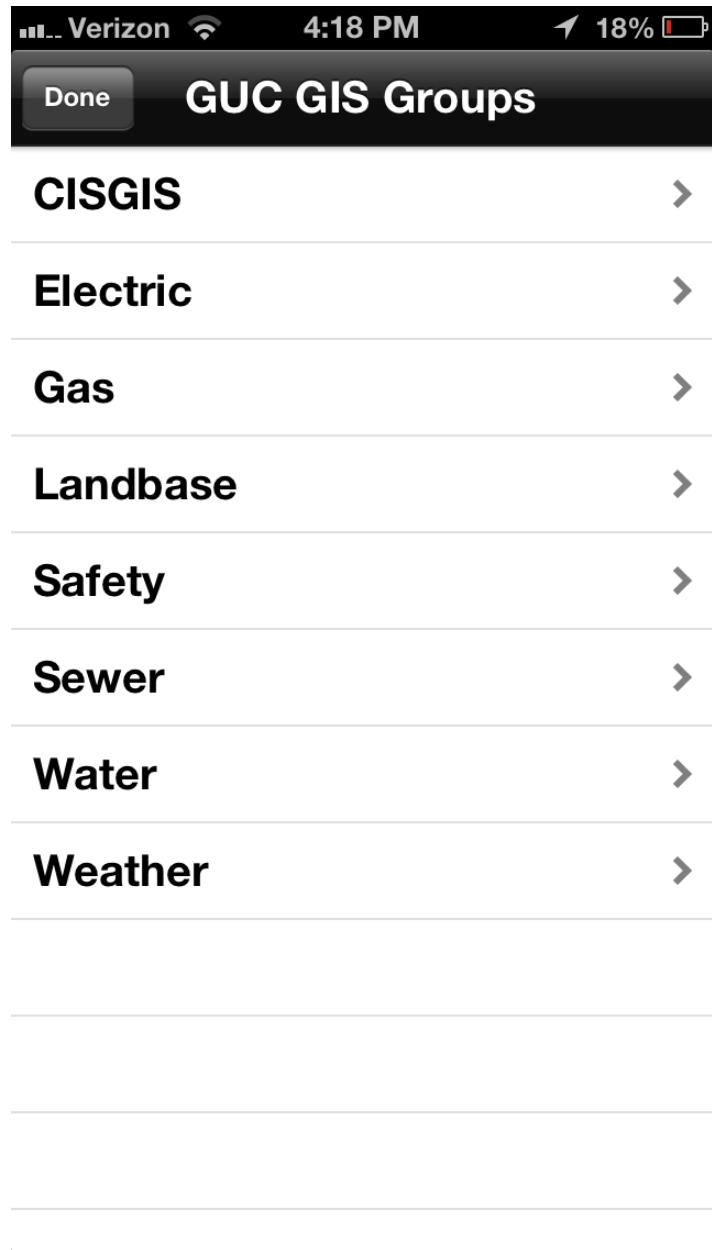
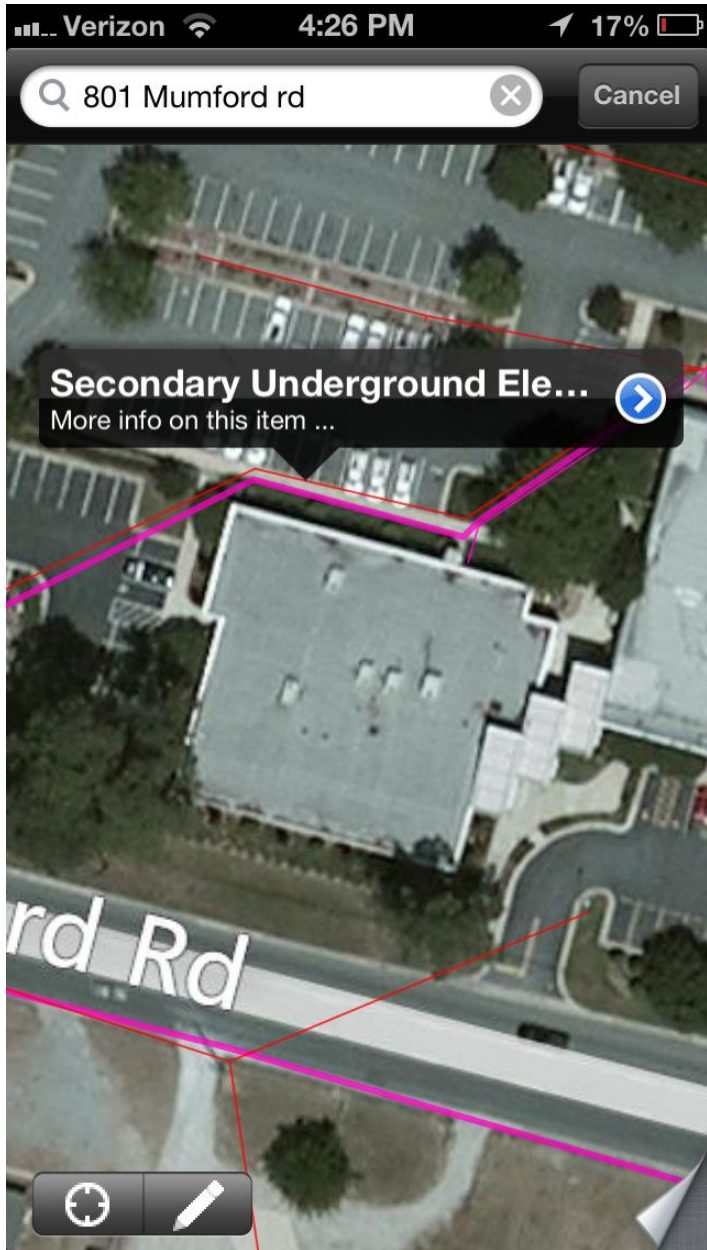
To:

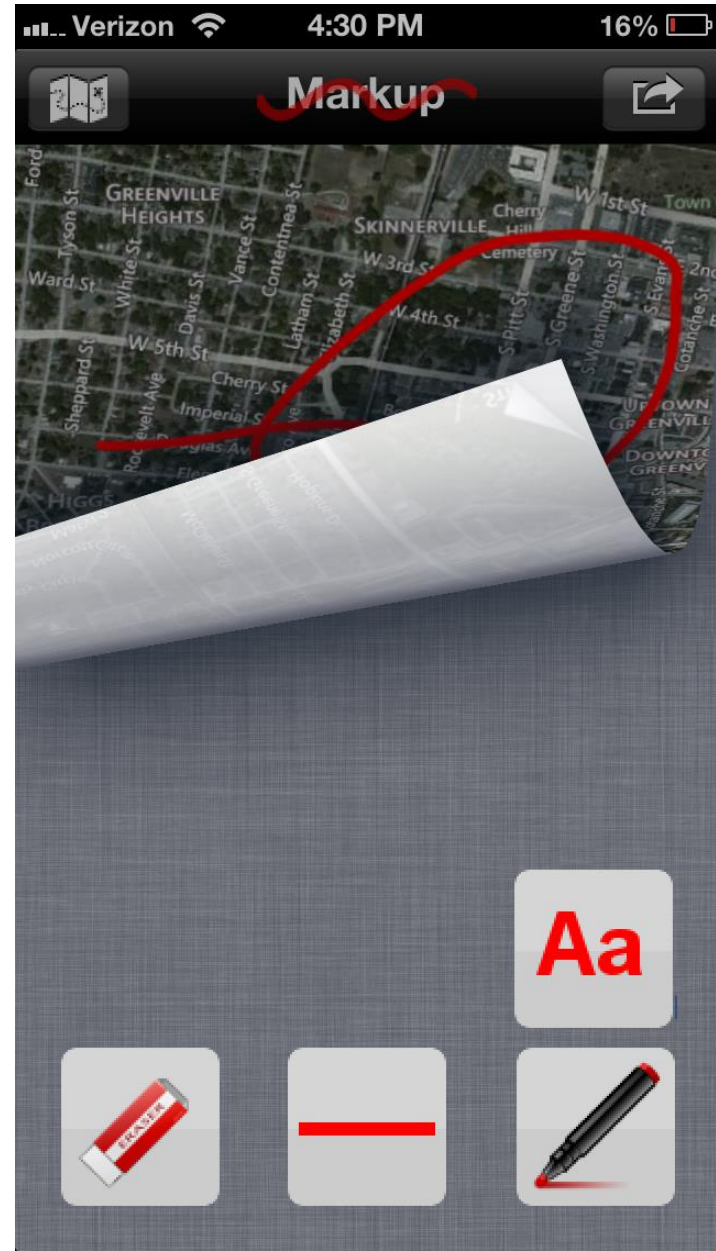
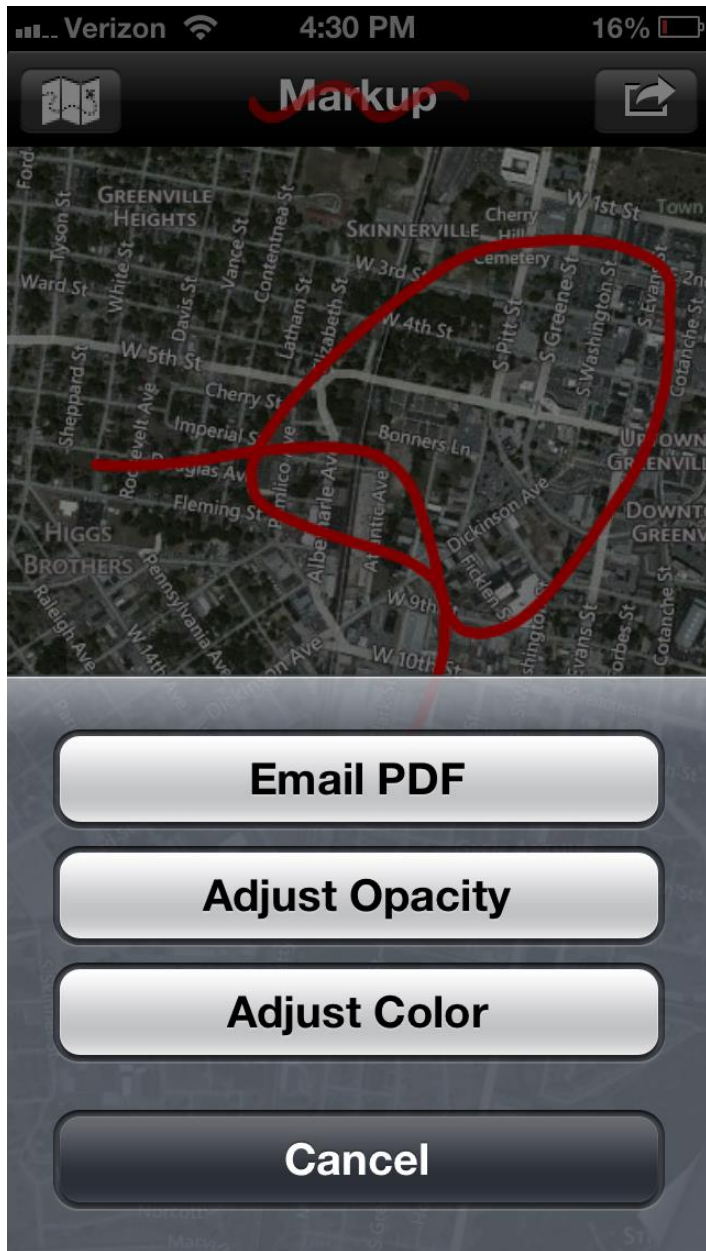
Cc/Bcc:

Subject: Check out my markup created with GUC Markup for iPad

I just created this on GUC Markup. With GUC Markup you can make drawings right on top of maps











180,000

requests

(430 per employee)



# ORACLE®



**Designer**

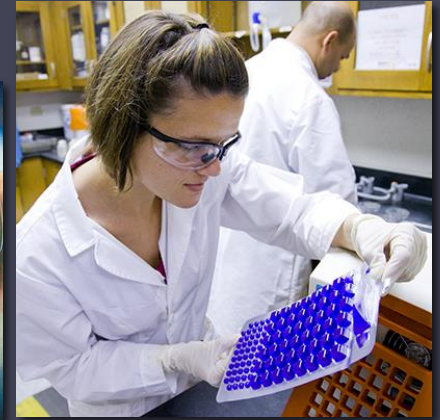
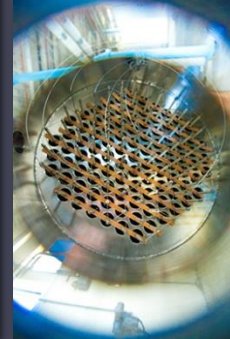
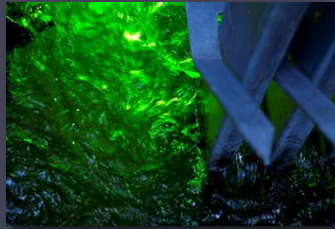


**ESRI**





**Greenville  
Utilities**



**GUC Self-Service  
GIS Anywhere and  
Everywhere**