

# **Data Driven Collaboration – Discussion**

## **NC Geographic Information Coordinating Council**

February 14, 2018



# *Data Drives Collaboration in the GIS Community: the Framework*

- Orthoimagery
- Elevation
- Roads
- Address points
- Parcel boundaries
- Jurisdictional boundaries
- Streams and water bodies
- Geodetic control

# *Good Data + Collaboration = Benefits for All*

- Economic development
- Emergency management
- Transportation planning
- Forest management
- Precision farming
- State and local taxation
- Recreation
- And more

# *Annual Report, 2017-2020 and Beyond*

## **Council emphasis:**

- Data Sharing
- Local – State connections
- Meeting business needs

## **Future focus:**

- Next Generation 911
- Census 2020 and after
- Enterprise Geospatial Data Management
- Serving the public

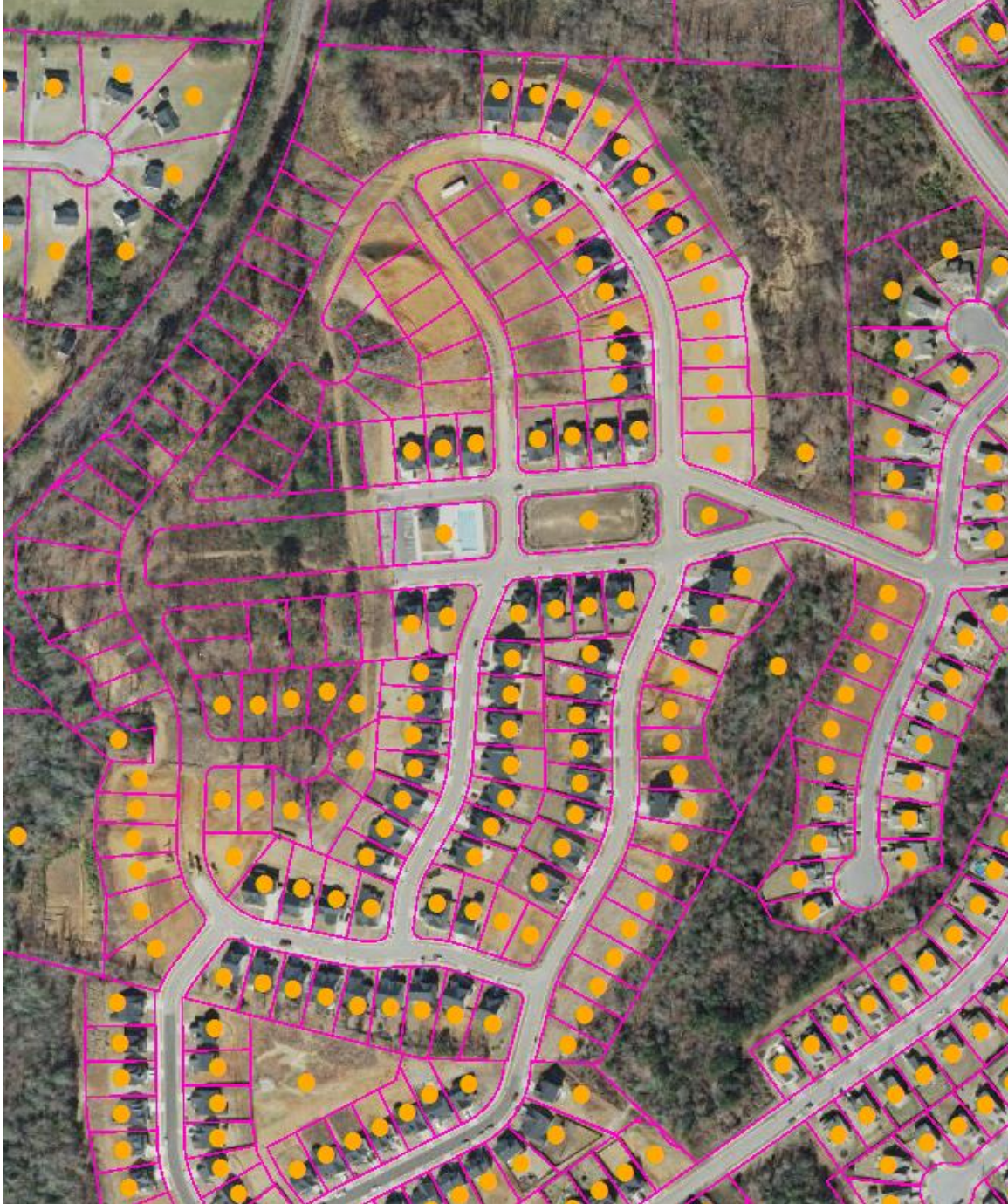


# *NextGen 911*

- All addresses
- Road network
- Emergency service boundaries
- Statewide consistency







## *Census 2020*

- Addresses – residential and non-residential
- Complete population count
- Fair representation
- Fair allocation of federal funding



# *Characteristics of Statewide Geospatial Data*

- Complete, consistent, current, documented
- Statewide scope
- Easy discovery and access
- Authoritative, trusted, curated
- Meet many business needs

## *Council Direction 2017-2018 and Beyond*

Question 1: How can we collaborate to improve or expand statewide **geospatial data**?

Council discussion on November 8, 2017 covered this first question. Summary points for Question 1:



## *Council Discussion Q1: Challenges*

- Addressing at the local level
- Aggregation of addresses, parcels, and roads statewide
- Translation of local data to a standard for content
- Documentation – metadata
- Comprehensive discovery of enterprise geospatial data including state and locally managed data

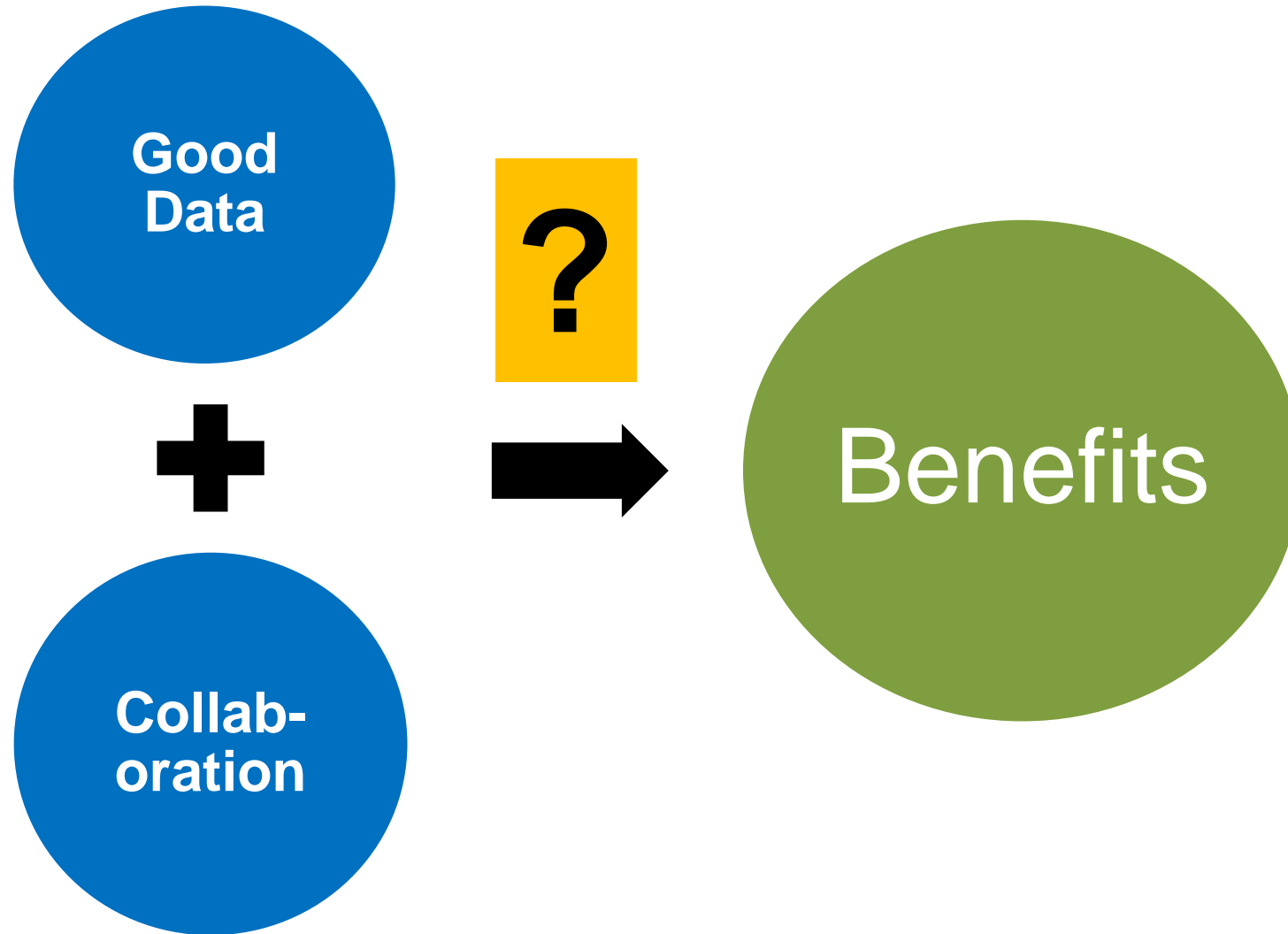
## *Council Discussion Q1: Constraints*

- Local government data security policies – infrastructure
- Local data distribution policies vary
- Local adoption of data content standards difficult to achieve statewide; data management and business needs vary - risk of breaking local applications

## *Council Discussion Q1: Opportunities*

- Expand the role of geospatial data in enterprise data management – collect location data with tabular data
- Make data sharing local-state more efficient
- Municipalities can communicate and share knowledge about “Smart Cities” solutions
- Keep up with changes in technology for data management and sharing

## *Focus On Data – Going Beyond*





*Council Discussion for February 14, 2018*  
*Questions 2 – 5 as time permits*

2. How can the Council support **applications** of geospatial data to meet business needs and the challenges ahead?  
(e.g., discovery/access, address validation, analytics)

*Council Discussion for February 14, 2018*  
*Questions 2 – 5 as time permits*

3. What are ways to collaborate for more integration of geospatial data in **information technology** for expanded benefits? (e.g., asset management; standards)

## *Council Direction 2017-2018 and Beyond*

4. How can the Council benefit **your part** of the GIS community in NC?

## *Council Direction 2017-2018 and Beyond*

5. How can the Council do more to increase the value of geospatial data to the **public**?



# Contacts

Council Chair: Alex Rankin  
alexrankin@cesicgs.com

Council Staff: Tim Johnson  
tim.johnson@nc.gov

