

EPA PARCELS PROJECT

Integrated Cadastral Data Exchange

Funded by US EPA Grant 83431001

Project Overview

November 13, 2013

Topics Today

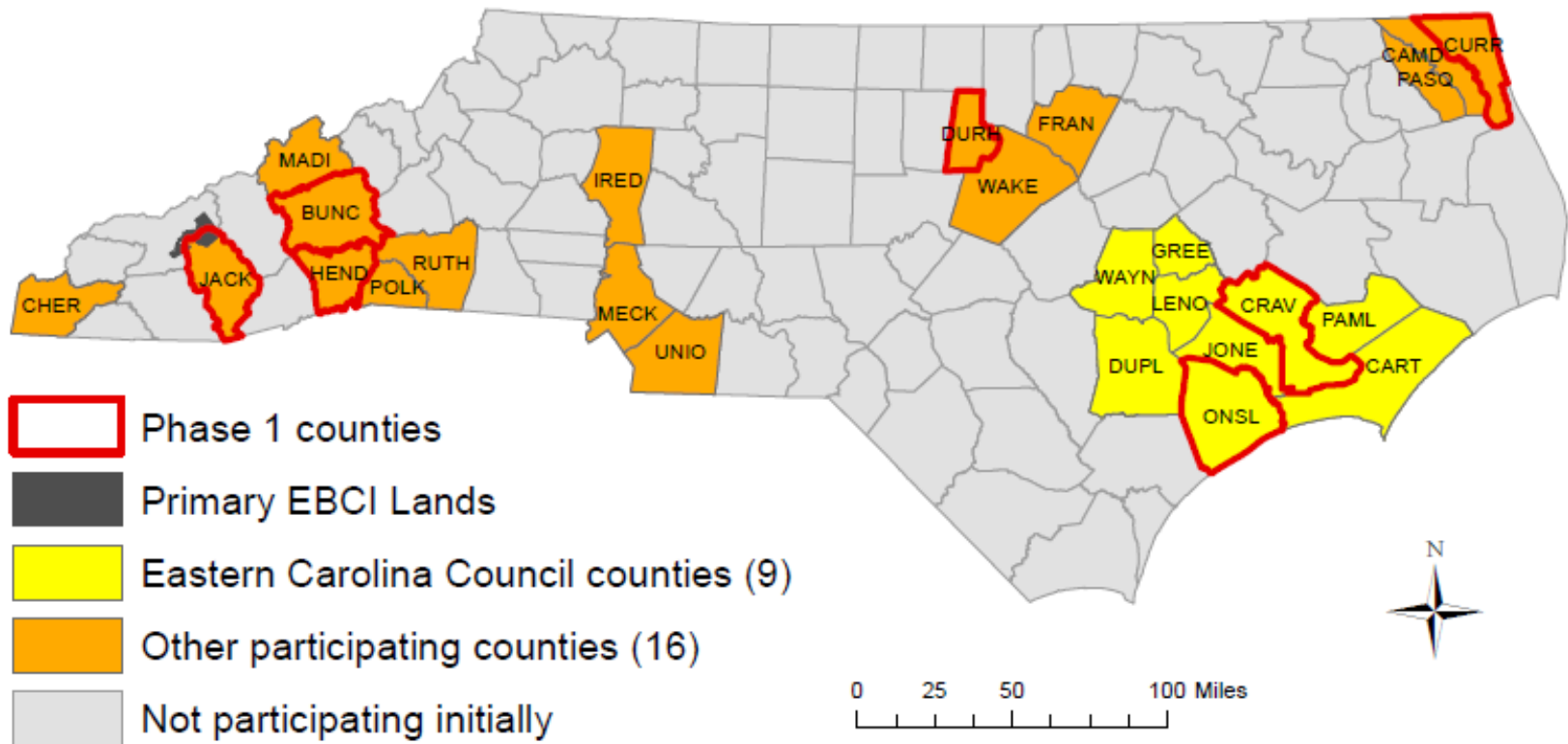
- Who's Participating?
- What's Being Developed?
- Project Schedule
- Parcel Data

Project Partners

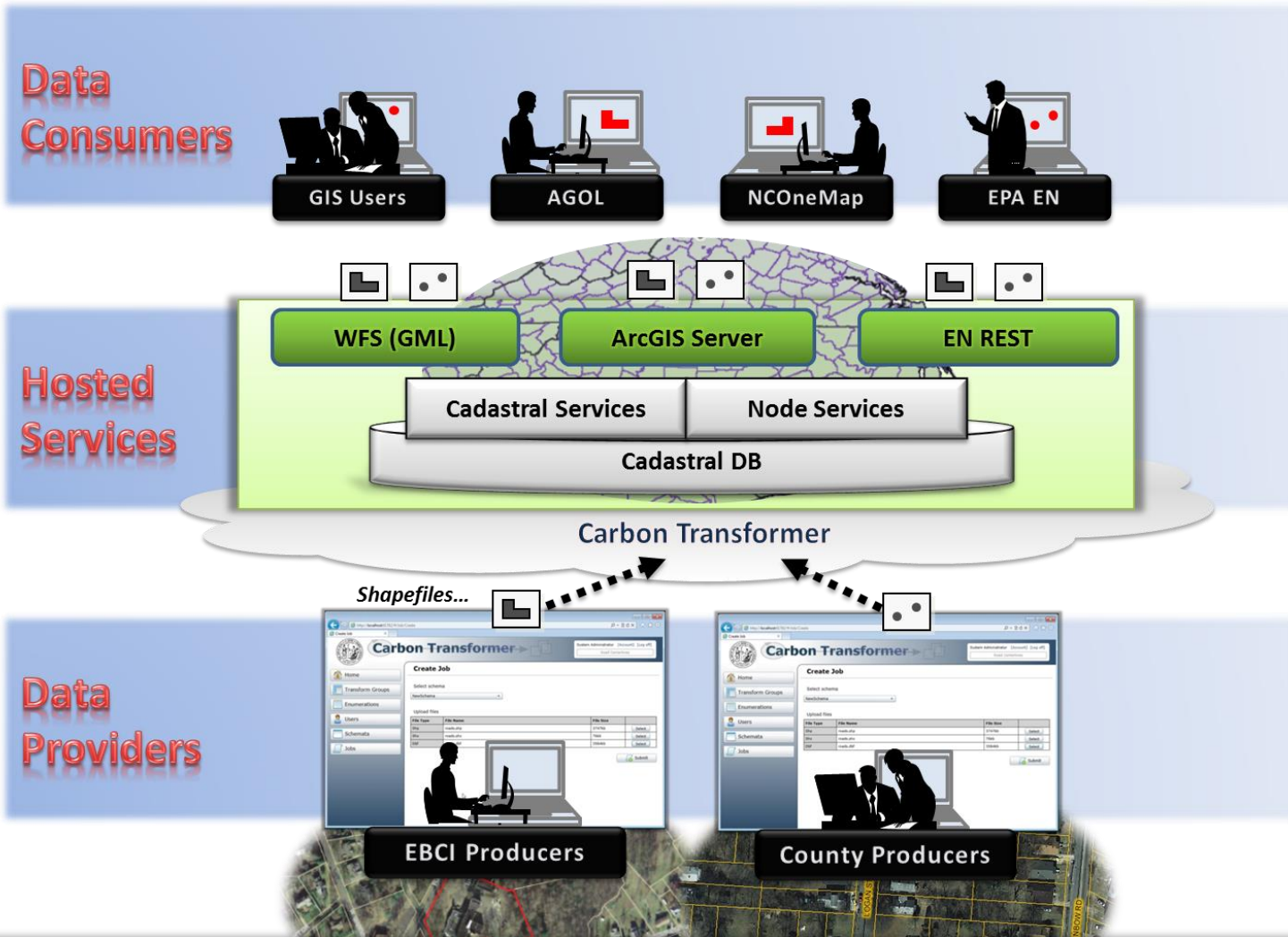
- NC Project Partners -
 - Working Group for Seamless Parcels
 - Eastern Band of Cherokee Indians
 - Land Records Management Program
 - Henderson County
 - NC Department of Transportation
 - NC CGIA / ITS
- Vendor Team -
 - Carbon Project, Inc.
 - Fairview Industries, Inc.
 - Atlas Geographic Data, Inc.

Who's Participating?

North Carolina and Eastern Band of the Cherokee Indians Integrated Cadastral Data Exchange Project Participants

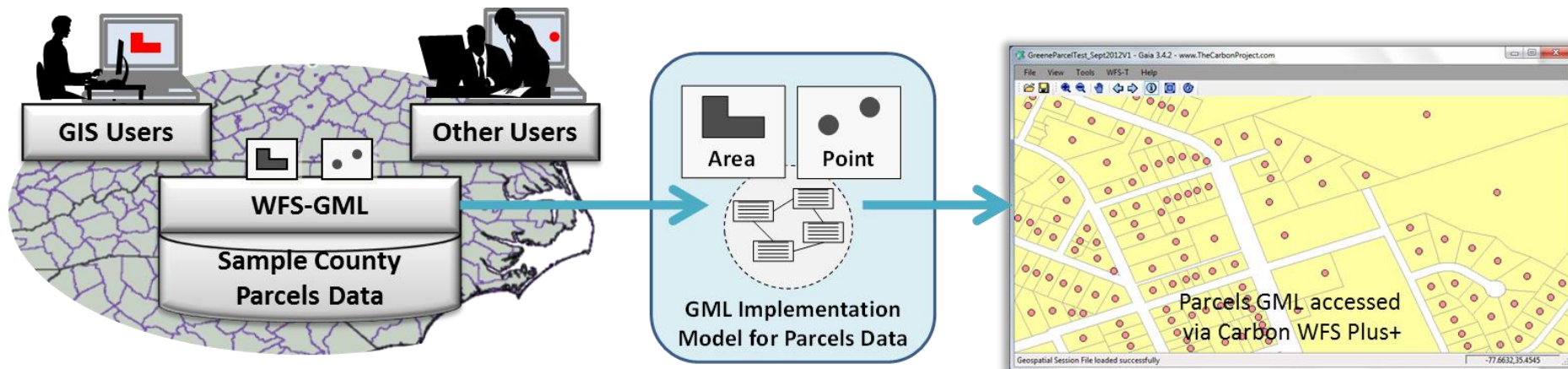


What's Being Developed?



Cloud-based System - Counties/EBCI upload data, translate to common Parcel standard, feed NC OneMap, ArcGIS Online, EPA Exchange Network...

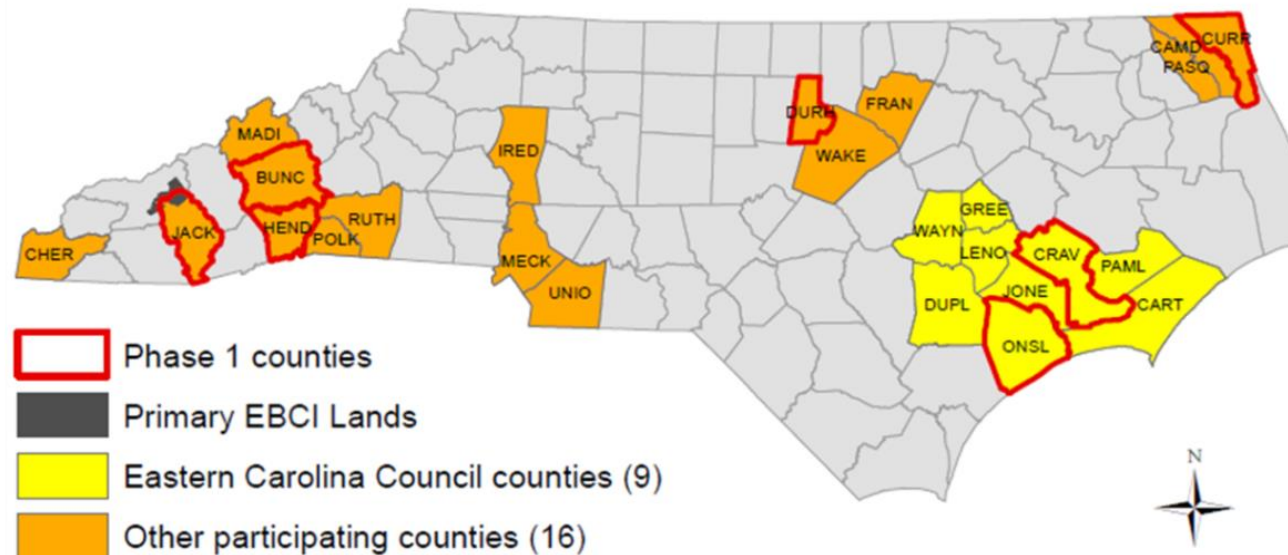
Transforms Parcel Data into Standard Model



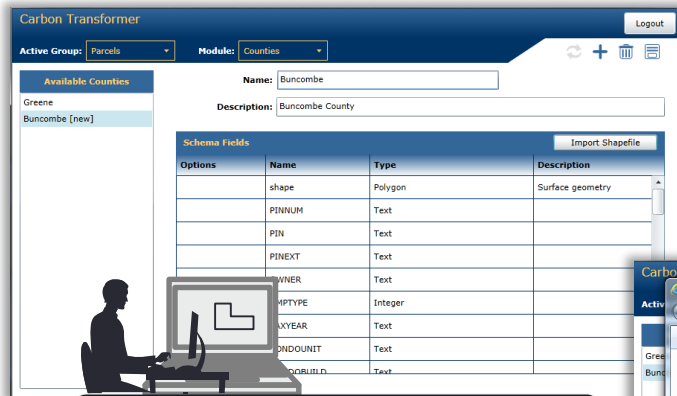
Standard Model based on 'Core Parcel Data Element Definitions' – allows parcel data to support variety of applications

Local Govt Engagement

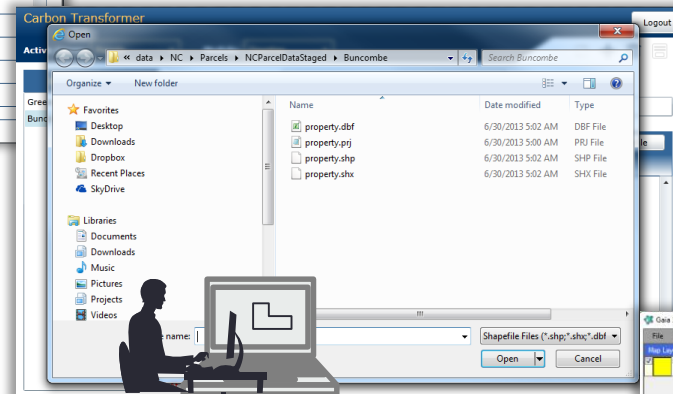
- County parcel data experts now being engaged, cross-walking CAMA/GIS data in preparation for deployment
- Transforming 'Phase I' counties with cloud-based tools...



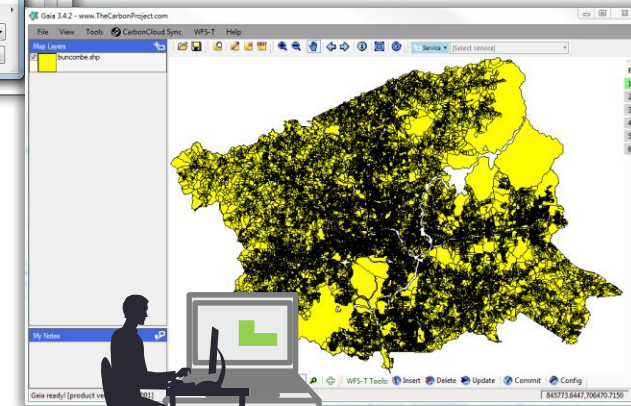
Transforming Parcel Data...



1 Select Schema



2 Upload Shapefile



3 Transform Data

Cloud-based Transformer



The screenshot displays the Carbon Transformer web application interface. At the top, a dark blue header contains the text "Carbon Transformer" on the left and a "Logout" button on the right. Below the header, there are two dropdown menus: "Active Group:" with "NC Parcels" selected, and "Module:" with "Home" selected. To the right of these menus is a toolbar with icons for refresh, add, delete, and list. The main content area is white and features the text "Carbon Transformer" and "Version 2.0" centered. A dropdown menu is open under the "Module:" dropdown, listing the following options: Home, Groups, Master Schema, Counties, Field Transforms, Lookups, Test, and Jobs.

Carbon Transformer
Version 2.0

Carbon Transformer is key project capability...

Cloud-based Transformer

Carbon Transformer Logout

Active Group: NC Parcels Module: Groups

Available Groups

- NC Parcels

Group Editor

Group Name:

Group Description

NC Parcels 'Transform Group' ...

Cloud-based Transformer

Carbon Transformer Logout

Active Group: NC Parcels Module: Master Schema

Name:

Description:

Schema Fields

	Field Name	Field Type	Description
↑ ↓ 🗑️ ✎	STNAME	String	The state name
↑ ↓ 🗑️ ✎	STFIPS	String	The state FIPS code
↑ ↓ 🗑️ ✎	CNTYNAME	String	The name of the county
↑ ↓ 🗑️ ✎	CNTYFIPS	String	The county FIPS code - use lookup to set.
↑ ↓ 🗑️ ✎	STCNTYFIPS	String	Combination of the state and county FIPS codes.
↑ ↓ 🗑️ ✎	GNISID	Long	The GNIS identifier for the county. Use lookup table.
↑ ↓ 🗑️ ✎	SOURCEAGENT	String	The agency houses the source reference documents. This could
↑ ↓ 🗑️ ✎	PARNO	Long	The local parcel number for the parcel record.

Master Schema (what we 'Transform' into)...

Cloud-based Transformer

Carbon Transformer Logout

Active Group: NC Parcels Module: Counties

Available Counties

- Buncombe
- Craven
- Polk
- Henderson

Name:

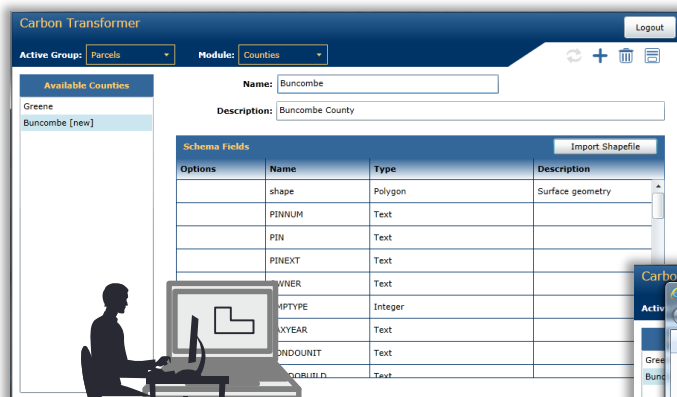
Description:

Schema Fields

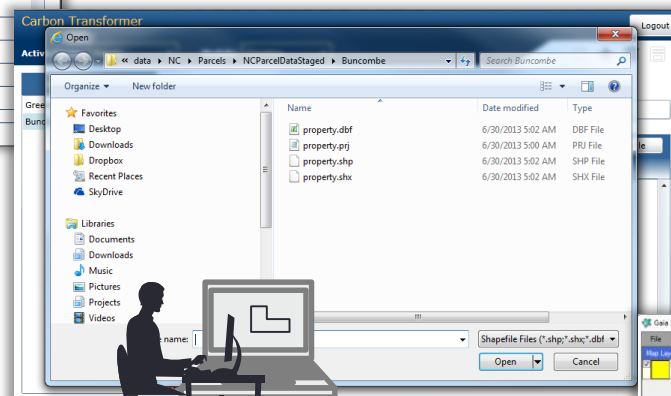
Field Name	Field Type	Description
shape	Surface	Surface geometry
PINNUM	String	
PIN	String	
PINEXT	String	
OWNER	String	
NMPTYPE	Integer	
TAXYEAR	String	
CONDOUNIT	String	
CONDOBUILD	String	

County Schema (the starting point)...

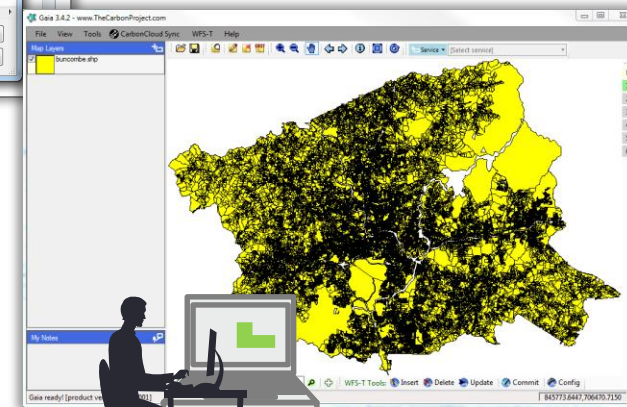
...Transform Parcel Data



1 Select Schema



2 Upload Shapefile







3 Transform Data

Easy Output and Publishing...

Carbon Transformer Logout

Active Group: NC Parcels Module: Jobs

Select County:
Buncombe

Existing Jobs

Status: Completed

Submitted: 10/31/2013 2:08:22 PM

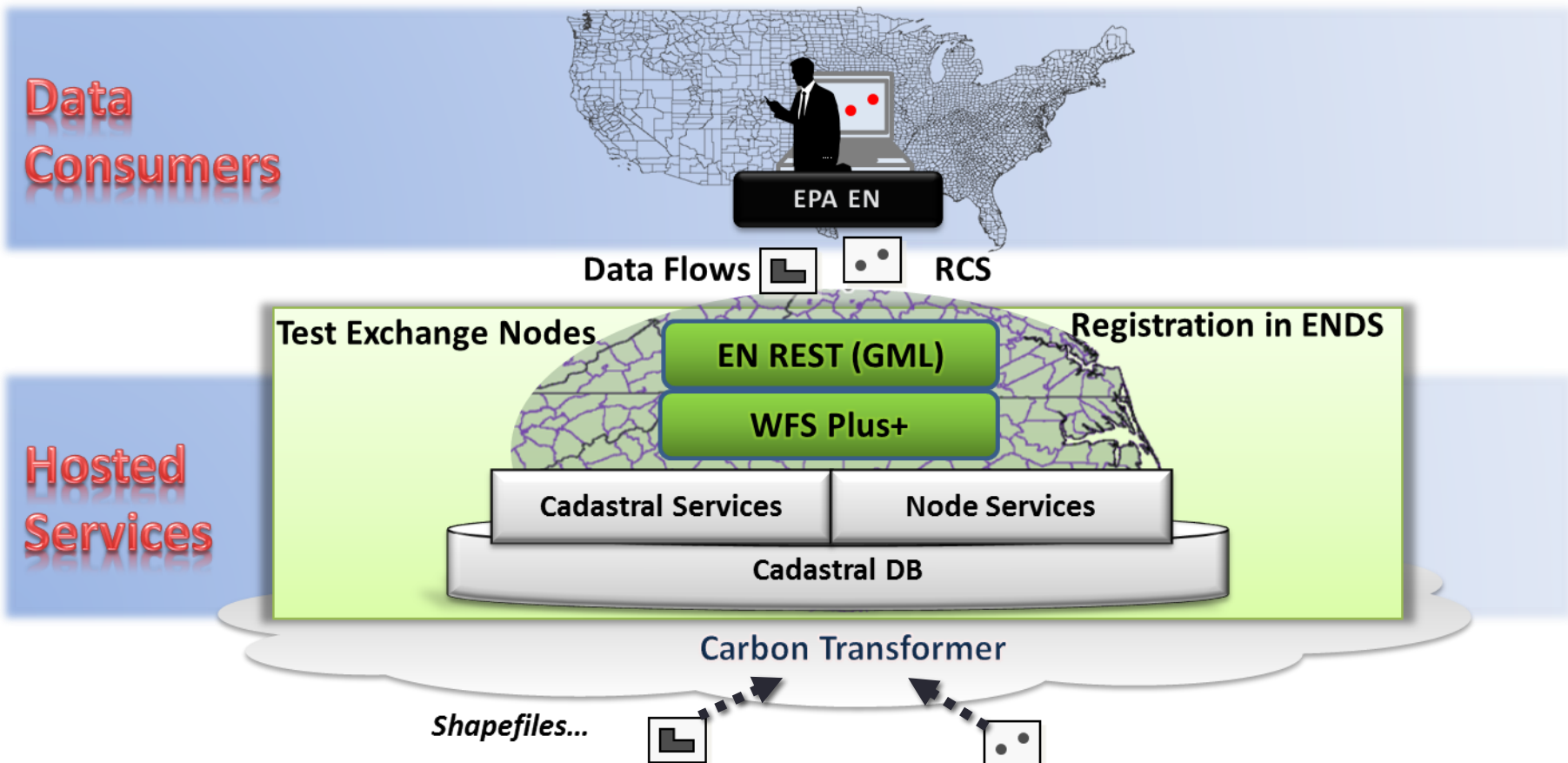
Completed: 10/31/2013 2:12:42 PM

Published:

	Filename	Filesize (bytes)
download	nc_parcels_buncombe_10312013_180820.zip	32768000

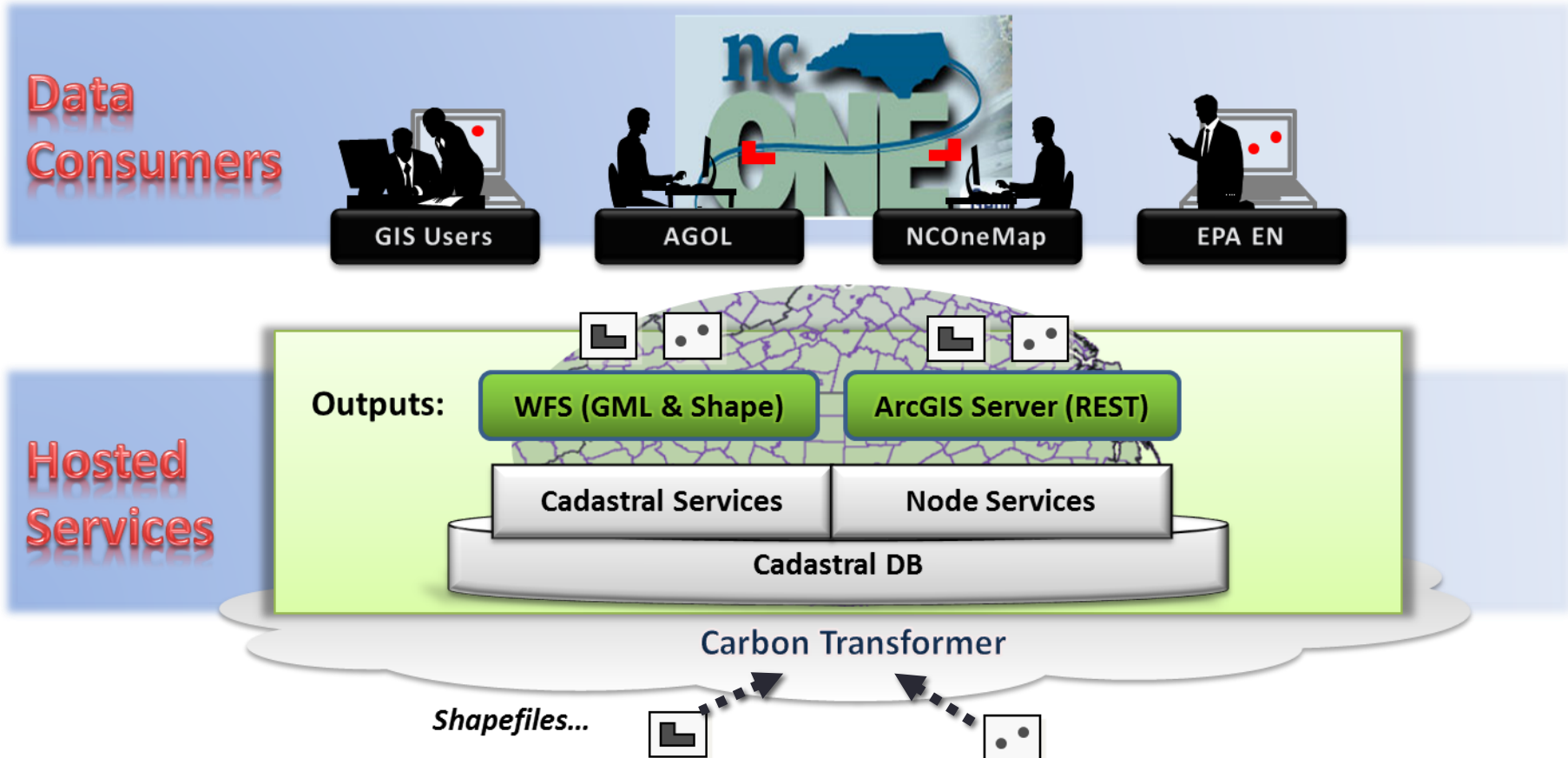
Polygon and Point Shapefile output ... hit 'Publish' to send standard data to online services

Output to EPA Exchanges...



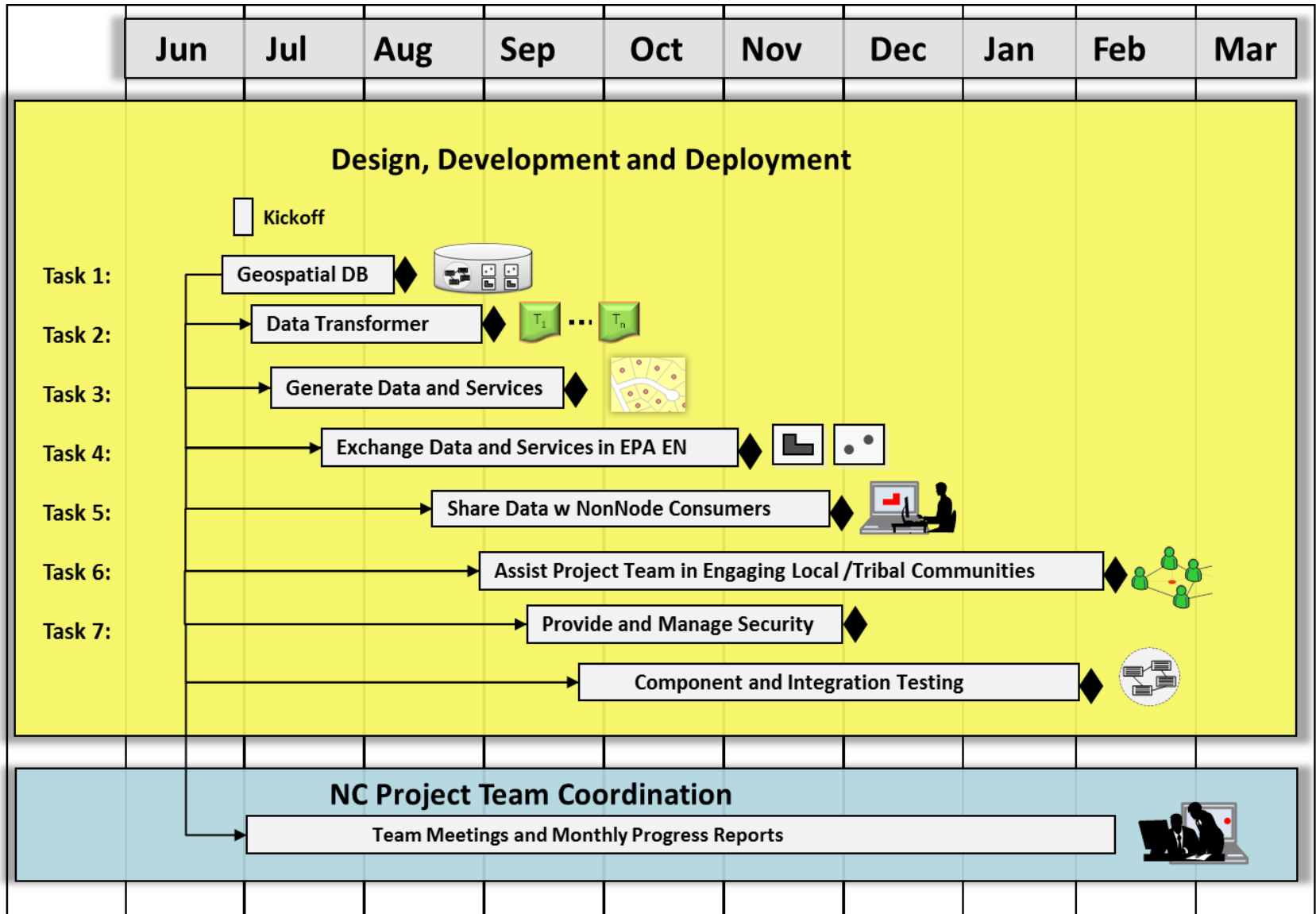
Cloud components to deliver transformed county/EBCI parcel data to EPA Exchange Network, using latest 'REST' Services

Output to Non-EPA Consumers...



ArcGIS Online to connect to NCOneMap, WFS/GML access for ArcGIS Desktop, Open Data output also available (JSON, CSV, KML etc)

Project Schedule and Tasks...



Other Topics...

EPA PARCELS PROJECT

Integrated Cadastral Data Exchange

Funded by US EPA Grant 83431001

Project Overview

November 13, 2013