

NCID Citizen Identity Cutover Prep

Web Services, SAML & HTTP Proxy Integration

NCID Team
Simeio Team

2023/07/13

Agenda

- ❖ Key Dates
- ❖ What will happen at Production Cut-over?
- ❖ Application User Impact after Cut-over
- ❖ Training Materials for External NCID Users
- ❖ Application Admin Impact after Cut-over
- ❖ Training Materials for Application Admins
- ❖ Web Service Integration
- ❖ SAML Integration
- ❖ HTTP Proxy Integration
- ❖ Q&A

Key Dates

❖ Go/No-Go checkpoint

7/31/2023

❖ Code Freeze

8/1 - 8/12

❖ Production Cut-over

8/13/2023

Production Cut-over

8/13/2023

- ❖ **User Accounts:** All External identities (Individual and Business User NCID accounts) would be migrated from NCID eDirectory to Simeio-Ping Directory.
- ❖ **NCID Portal:** External NCID accounts will not appear in the Search results.
- ❖ **MyNCID Portal:** Self-Service of existing external user accounts, Registration of new external user accounts, managing application access for external users.
- ❖ **Sync to Shared LDAP:** Only Internal user accounts will be synched from NCID eDirectory. External user accounts will now be synched from Simeio-Ping Directory.
- ❖ **Sync to Agency AD:** Only Internal user accounts will be synched from NCID eDirectory. If applicable, External user accounts will now be synched from Simeio-Ping Directory.
- ❖ **Web Services:** The existing endpoint will point to the new web service code. Behind the scenes, it will point to Simeio-Ping Directory for External users and to NCID eDirectory for Internal users.
- ❖ **HTTP Proxy and SAML:** The Authentication plug-in deployed in Production will direct External user authentication to Simeio-Ping Directory and Internal user authentication to NCID eDirectory.

Application User Impact after Cut-over

Internal Users

External Users

Account registration & Self-service

No Change
<https://ncid.nc.gov>

*****Change*****
<https://myncid.nc.gov>

Application access

No Change

No Change

Email Notification pre-cut-over

Not applicable

Yes

Email Notification after-cut-over + 2 reminders to login to MyNCID Portal

Not applicable

Yes

Training Material for External Users

User Guide: [NCID User Guide for Individual & Business Users](#)

How-to Videos:

- 1) [Register for An NCID Account – YouTube](#)
- 2) [Unlock Account - YouTube](#)
- 3) [Forgot Username - YouTube](#)
- 4) [Forgot Password - YouTube](#)
- 5) [Changing your Password - YouTube](#)
- 6) [Updating your Profile \(especially Mobile Number and Email address\) - YouTube](#)

Application Administrator Impact after Cut-over

Internal Users

Managing Application Access manually

No Change
<https://ncid.nc.gov>

Programmatic Role Assignment - via Web Services

No Change

Managing Role Administrators

*****Change*****
Role administrators have to be set up in <https://ncid.nc.gov> for managing Internal users and in <https://myncid.nc.gov> for managing External users

External Users

*****Change*****
<https://myncid.nc.gov>

*****Change*****

DN format for external users :
uid=<loginid>,ou=**business**,ou=external,ou=People,dc=nc,dc=gov
uid=<loginid>,ou=**individual**,ou=external,ou=People,dc=nc,dc=gov

Not applicable

Training Material for Application Administrators

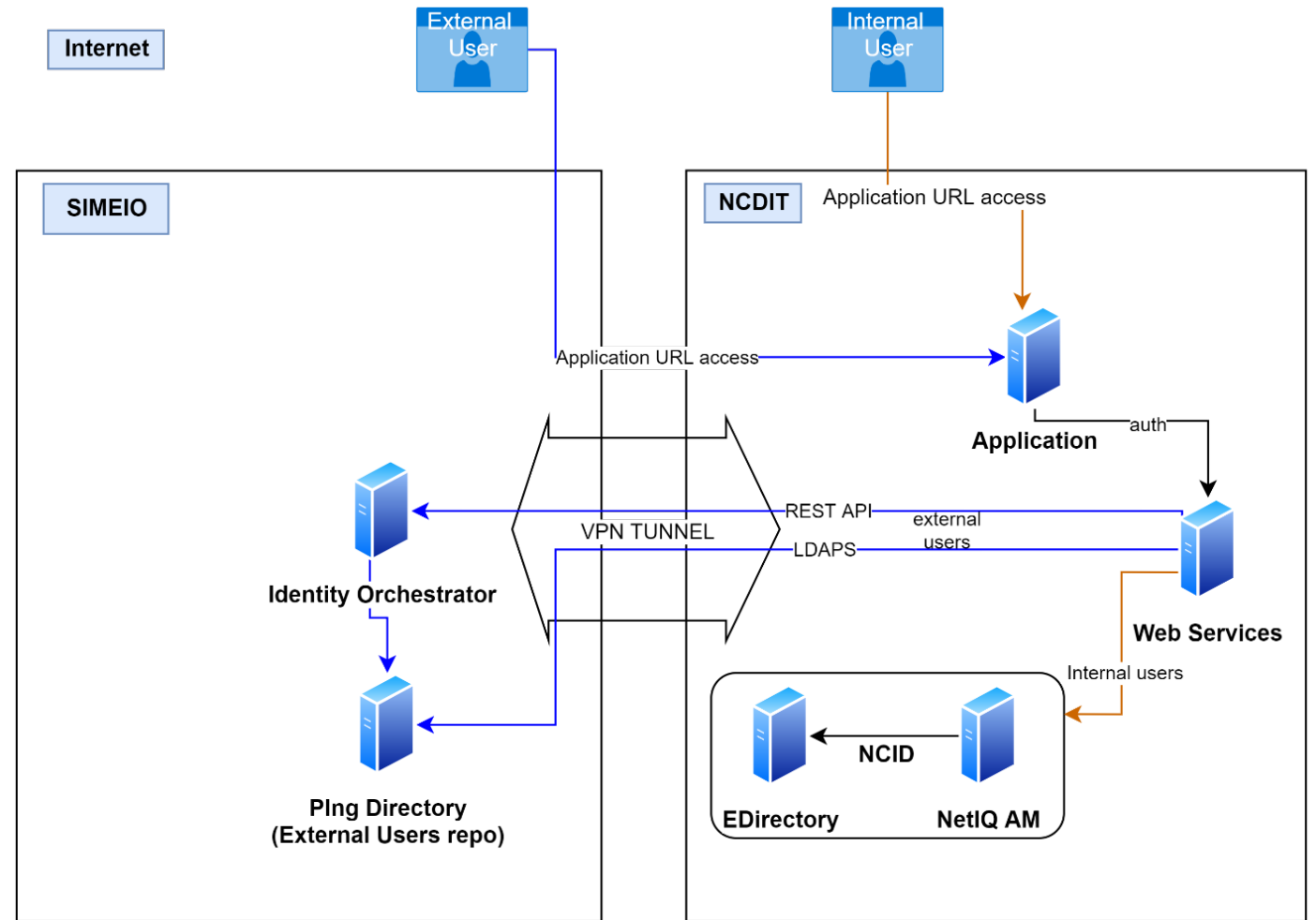
User Guide: [NCID Guide for Application Administrators](#)

How-to Videos:

- 1) [Managing Application Access for External Users – YouTube](#)
- 2) [Granting/Removing Role Admin Access to Internal Users - YouTube](#)

Web Service Integration

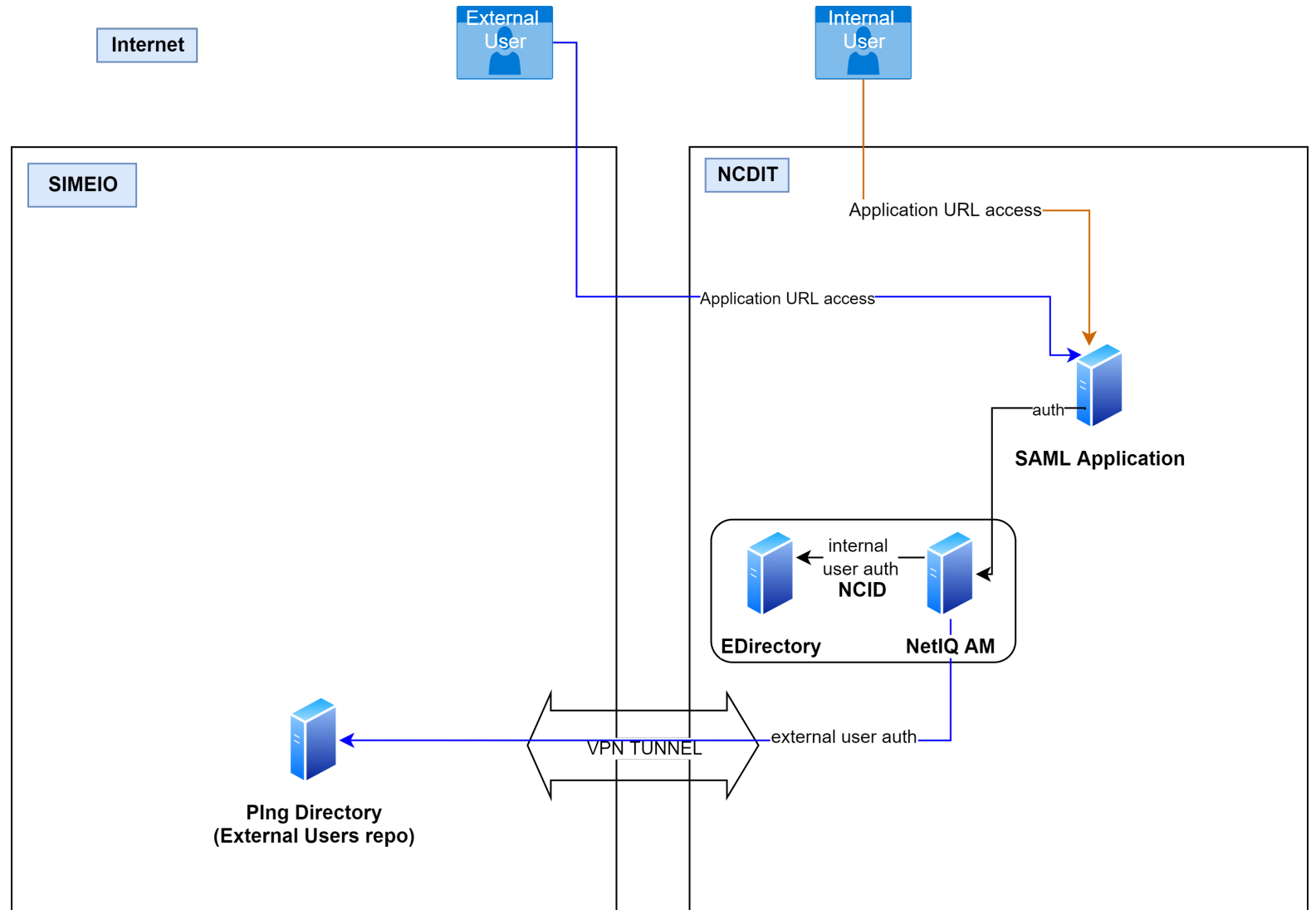
- We will deploy new Web Service code to the existing endpoint in Production. This new code will connect to:
 - Simeio Ping Directory for External User Authentication & Management
 - NCID eDirectory for Internal User Authentication & Management
- Applications will continue to use the same endpoint. Application teams should test the web service functions leveraged by their application after the cutover notification.



Web Services based applicaitons

SAML Integration

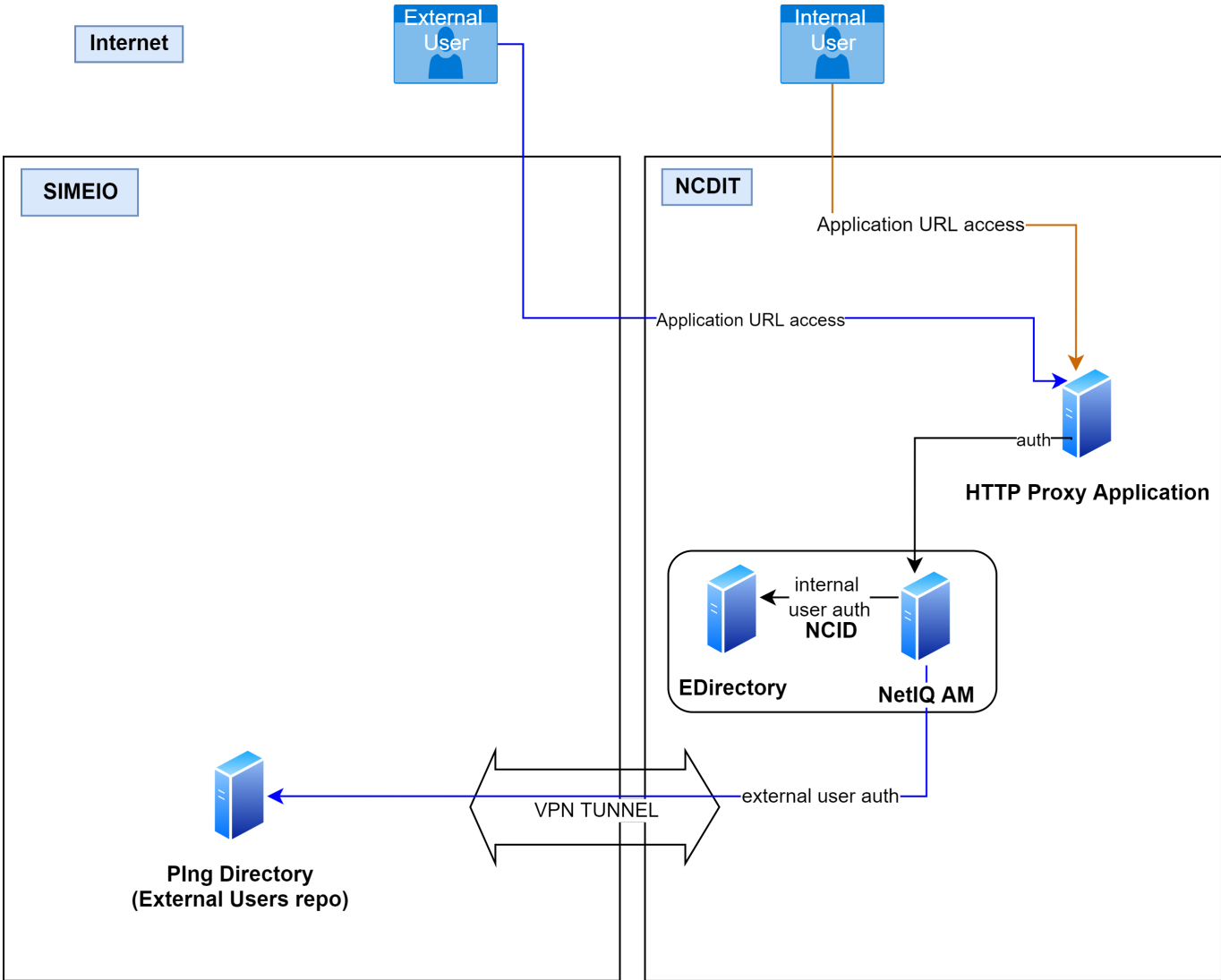
- NCID NetIQ system will use an authentication plugin to redirect the external user authentication to Simeio Ping Directory.
- Applications would continue to work without any change. Application teams should test the login after the cutover notification.



SAML based applications

HTTP Proxy Integration

- NCID NetIQ system will use an authentication plugin to redirect the external user authentication to Simeio Ping Directory.
- Applications would continue to work without any change. Application teams should test the login after the cutover notification.



HTTP based applications

Questions?

FAQs: [Frequently Asked Questions](#)

