

# Statewide Orthoimagery Program

Ben Shelton

NC Center for Geographic Information and Analysis

October 7, 2025

# Current Orthoimagery Program Cycle

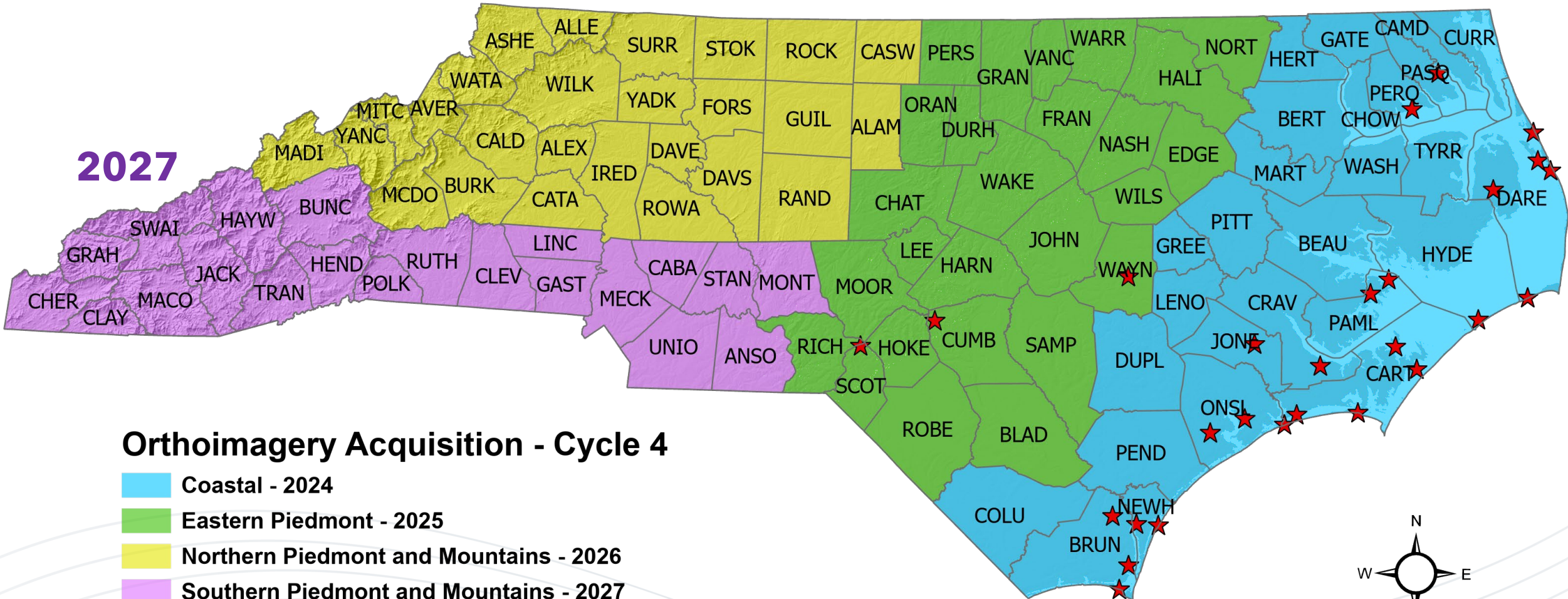
4-Year Cycle

2026

2025

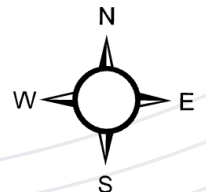
2024

2027

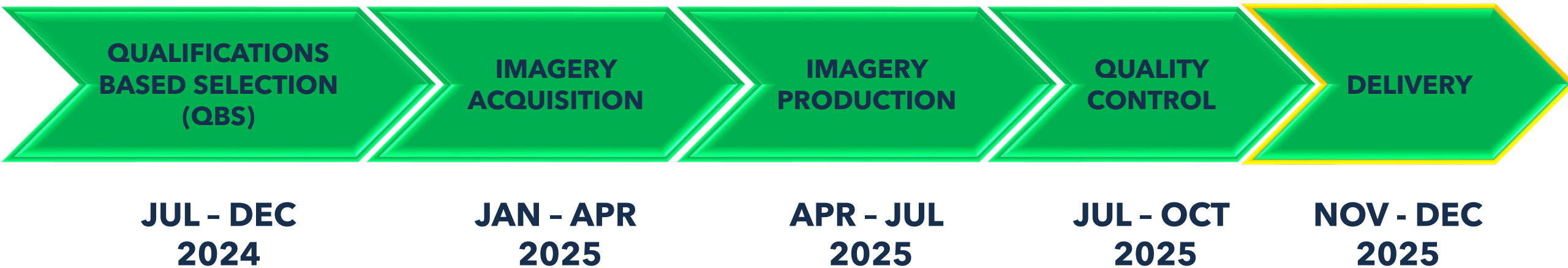


## Orthoimagery Acquisition - Cycle 4

- Coastal - 2024
- Eastern Piedmont - 2025
- Northern Piedmont and Mountains - 2026
- Southern Piedmont and Mountains - 2027
- ★ Military Installations



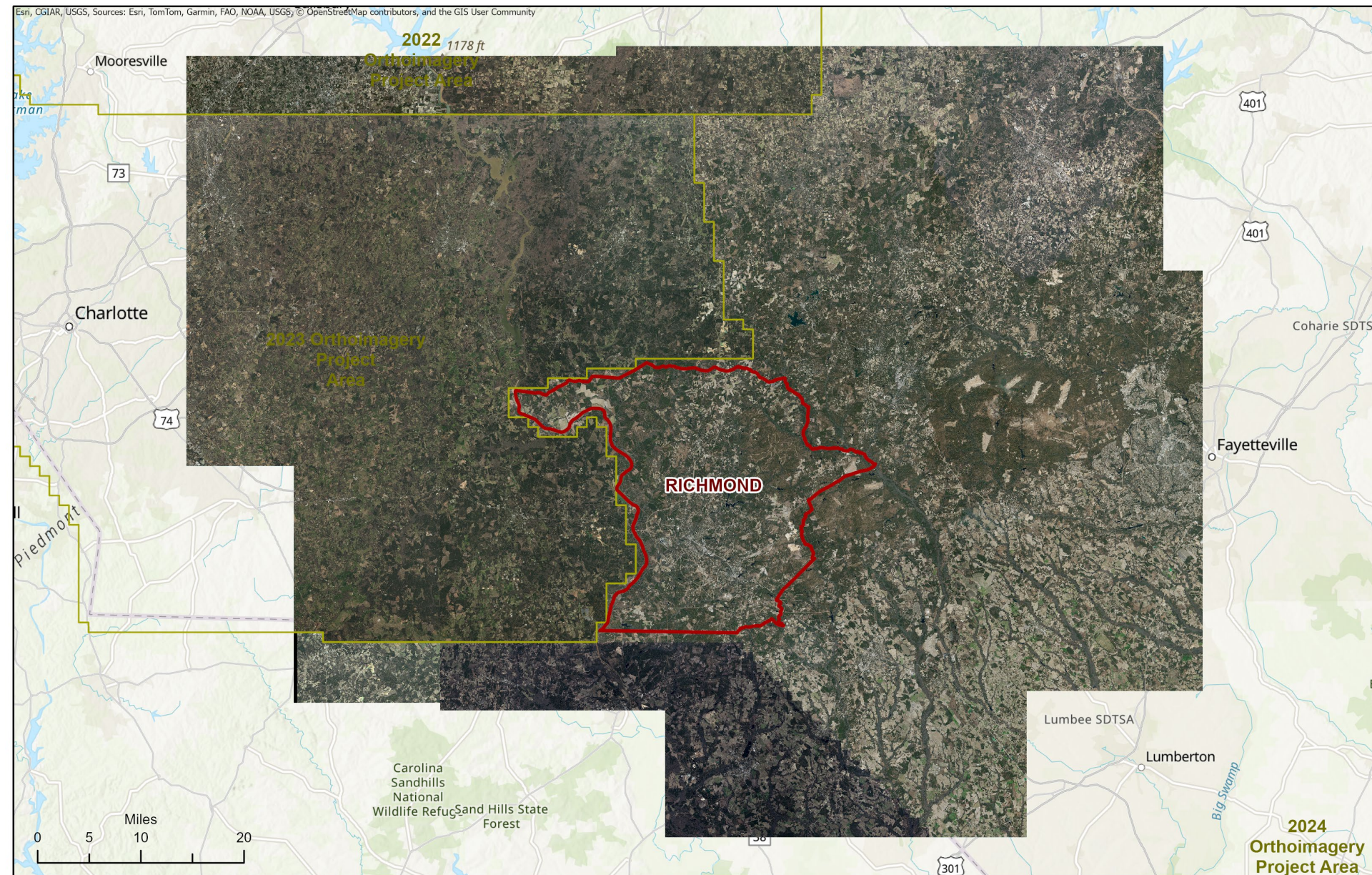
# 2025 Project Schedule







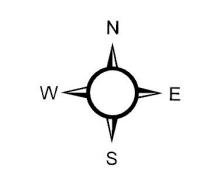




- Imagery
  - TIF
  - SID\_4\_Band
  - SID\_3\_Band
- Richmond\_2025.sid
- Neighbors

Richmond 2025 Hard Drive Contents

- |  |   |
|--|---|
| 4-BAND TIF, 4-BAND SID, & 3-BAND SID TILES | IMAGERY PROJECT BOUNDARIES                |
| 3-BAND TIF & 3-BAND SID TILES              | NEIGHBOR COUNTY MOSAIC EXTENTS            |
| PRIMARY COUNTY SINGLE-FILE MOSAIC EXTENT   | EXTERNAL STATE IMAGERY INCLUDED IN MOSAIC |



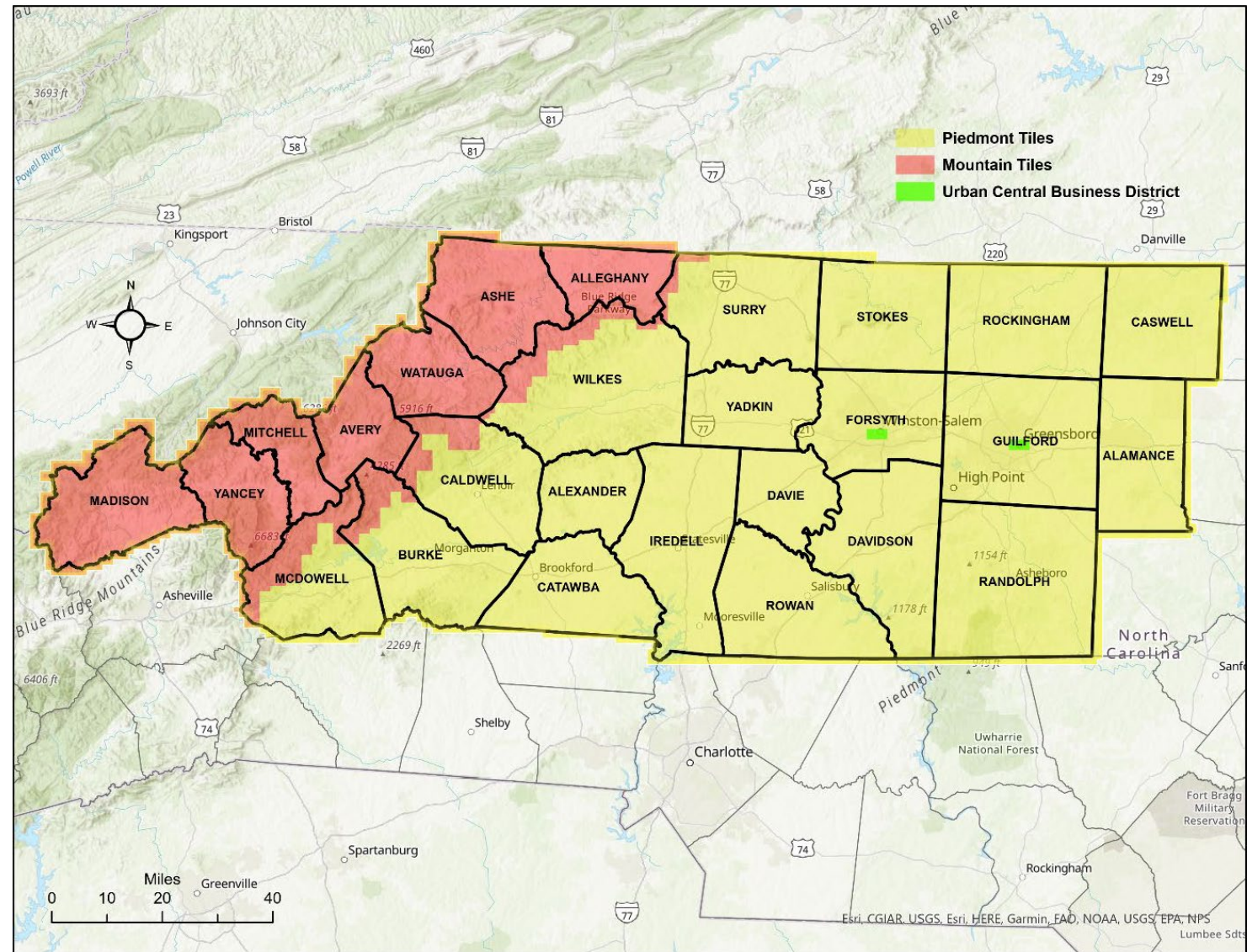


# Data Sharing

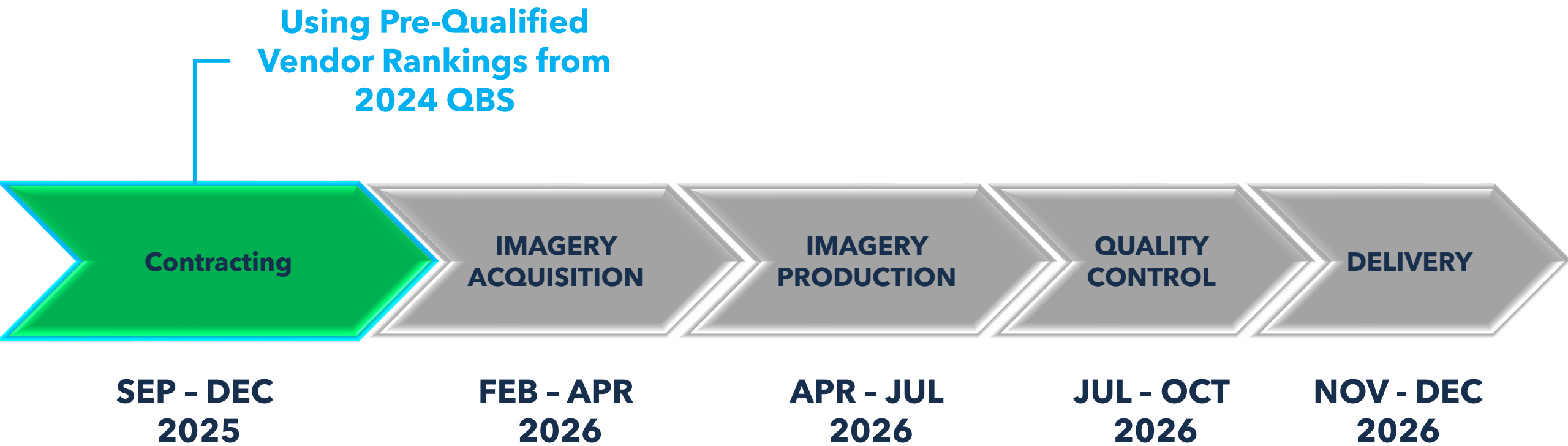
- Expected sharing:
  - PSAPs within your county
  - GIS operations in municipalities and county offices
- NC OneMap for online access ([www.nconemap.gov](http://www.nconemap.gov))
  - Download
  - Online imagery services  
<https://services.nconemap.gov/secure/rest/services>
- State and Federal Partners
- ESRI Imagery Basemap

# 2026 Project Area

- 26 Counties
- 12,349 square miles
- 25% of Project Area 'Mountain Acquisition'
- True Orthoimagery – SA4
  - Greensboro
  - Winston-Salem



# 2026 Project Schedule







Ben Shelton

919.754.6377

[Ben.Shelton@nc.gov](mailto:Ben.Shelton@nc.gov)

<https://www.nconemap.gov/pages/imagery>