



# ***Municipal Boundaries Working Group***

***Statewide Mapping Advisory Committee  
July 14, 2021***

Integrity

Innovation

Teamwork

Excellence



## Municipal Boundaries Background

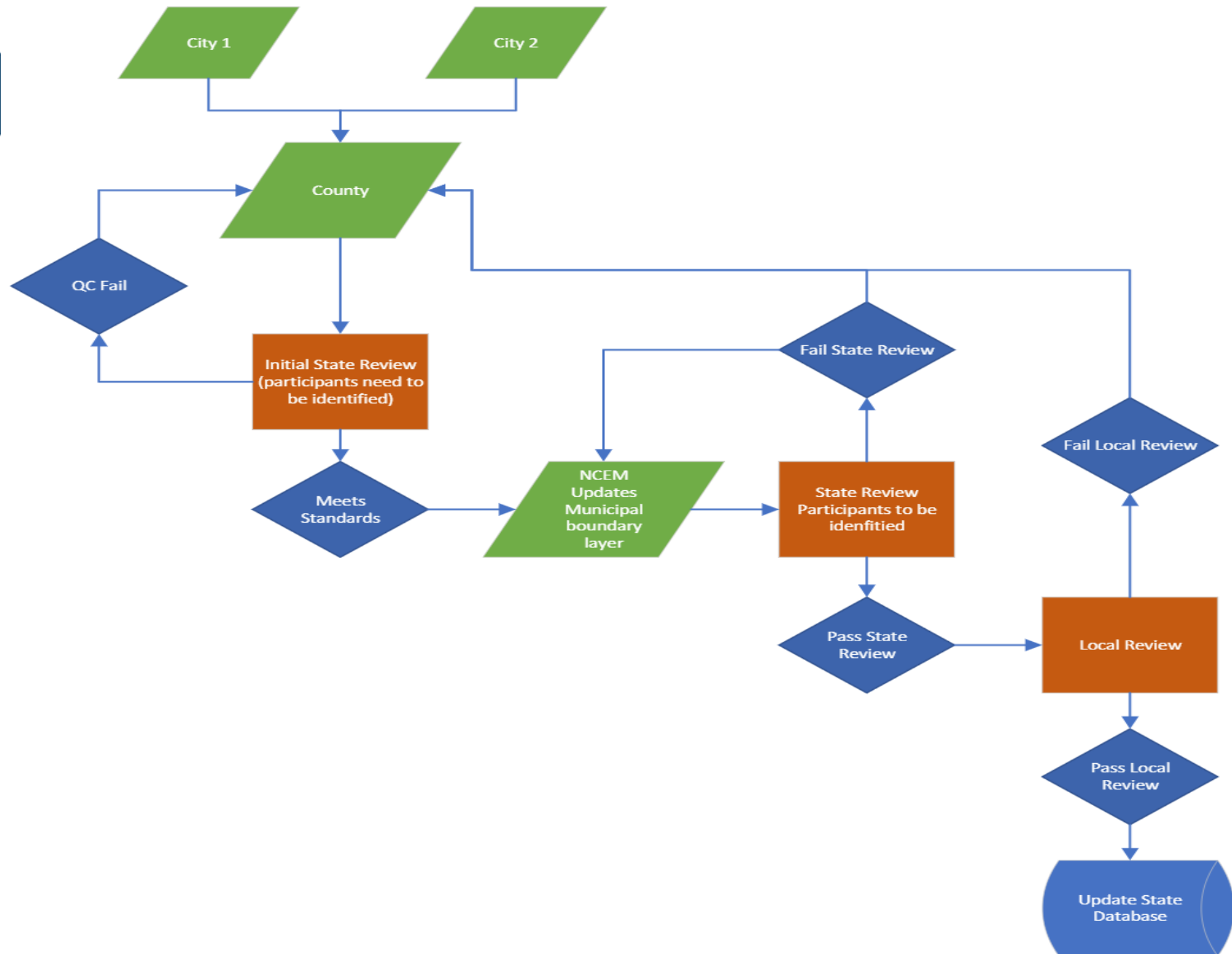
- Maintain a single municipal boundary resource to serve the needs of emergency management, state agencies, US Census Bureau, and other stakeholders.
- Streamline the boundary change reporting process and reduce reporting burden on local governments.
- Provide regular review and quality control opportunities for all partners
- Municipal Boundaries Working Group has developed content standards, core attributes, and a process flow to achieve this goal

Field Name	Description	Type	Example	Data Entry
<b>MunicipalName*</b>	Municipal Boundary Name in caps	Text	CITY OF RALEIGH	required
<b>EffectiveDate*</b>	Effective Date of the annexation	Date	7/21/2021	required
<b>AdoptedDate*</b>	Date ordinance is adopted by local council	Date	4/20/2021	required
<b>County*</b>	County Name in caps	Text	WAKE	required
<b>FIPS Code*</b>	7 digit FIPS code for municipalities (2 digit state 5 digit town) or 4 digit code for Tribal boundaries	Text	3755000	required
<b>Source*</b>	Source of digital submission (Municipal/County)	Text	County	required
<b>LocalName*</b>	Local Annexation Name- name used locally to reference the annexation	Text	Watts Property	optional
<b>OrdinanceNumber*</b>	Ordinance Number	Text	AN-2021-5	required
<b>DeedBookPage*</b>	Deedbook/page	Text	102-1234	required
<b>DeedRecord*</b>	Date Deed Recorded	Date	4/1/2021	optional
<b>MapbookPage*</b>	MapBook or Platbook and Page (If the map is attached as an additional page to the ordinance, use the same book/page as the ordinance)	Text	102-1234	required
<b>LocalAcres*</b>	Local Reported Acreage	Number	16.8	optional
<b>SubmissionDate</b>	Date data submitted to SOS	Date	5/1/2021	required
<b>EffYear</b>	Effective year (calculated from Effective date)	Number	2021	Calculated
<b>SOSApproved</b>	Indicates that the SOS has approved the submission to be incorporated into the state layer	Text	Yes	State maintained
<b>DeannexationDate*</b>	Date the area was removed from the municipality	Date	12/1/2025	optional



## Municipal Boundary Attributes

Field Name	Description	Type	Example	Data Entry
<b>MunicipalName</b>	Municipal Boundary Name	Text	SAINT PAULS	Required
<b>Alias</b>	Alternative spelling of the municipal name	Text	St. Pauls	Required
<b>FIPS Code</b>	7-digit FIPS code (2 digit state 5 digit town)	Text	3758720	Required
<b>Census Type</b>	Description of place type (Town, City, Village, etc.)	Text	Town	Required
<b>OriginalSource</b>	Original source of statewide municipal boundary shape	Text	Local data	Required
<b>Incorporation</b>	Year of municipality incorporation	Date	1909	Required
<b>TownCode</b>	4 digit code	Text	639	Required
<b>LastUpdate</b>	Last date the border was edited at the state - this will be sometime in 2021 for everything to begin	Date	7/1/2021	Updated yearly
<b>SOSApproved</b>	Date the SOS Office last approved the municipality shape. This date should be soon after the last updated date.	Date	8/1/2021	Updated yearly
<b>LocalApproved</b>	Date the municipality last approved the municipality shape. This date should be soon after the last updated date.	Date	1/1/2022	Updated yearly
<b>DOTApproved</b>	Date DOT last approved the municipality shape. This date should be soon after the last updated date.	Date	8/2/2021	Updated yearly
<b>County</b>	County name in caps	Text	ROBESON	Required
<b>Unincorporation</b>	Date the municipality was unincorporated	Date	12/1/2025	optional





## Municipal Boundaries – Next Steps

- Municipal Boundaries Working Group has developed content standards, core attributes, and a process flow to establish a single municipal boundary resource to serve the needs of stakeholders.
- This process was successfully tested in a pilot test of 10 counties and will be expanded to include all counties within 6 months.
- Outreach and training will continue during this time
- The Municipal Boundaries Working Group asks the Statewide Mapping Advisory Committee to support this process and recommend GICC approval



## Contact



Bob Coats  
984-236-0687  
[Bob.Coats@osbm.nc.gov](mailto:Bob.Coats@osbm.nc.gov)

Governor's Census Liaison,  
North Carolina State Data Center  
Demographic and Economic Analysis Section  
NC Office of State Budget and Management