

North Carolina Geodetic Survey (NCGS): Positioning NC today and for the future!



State Mapping Advisory Committee July 14, 2021

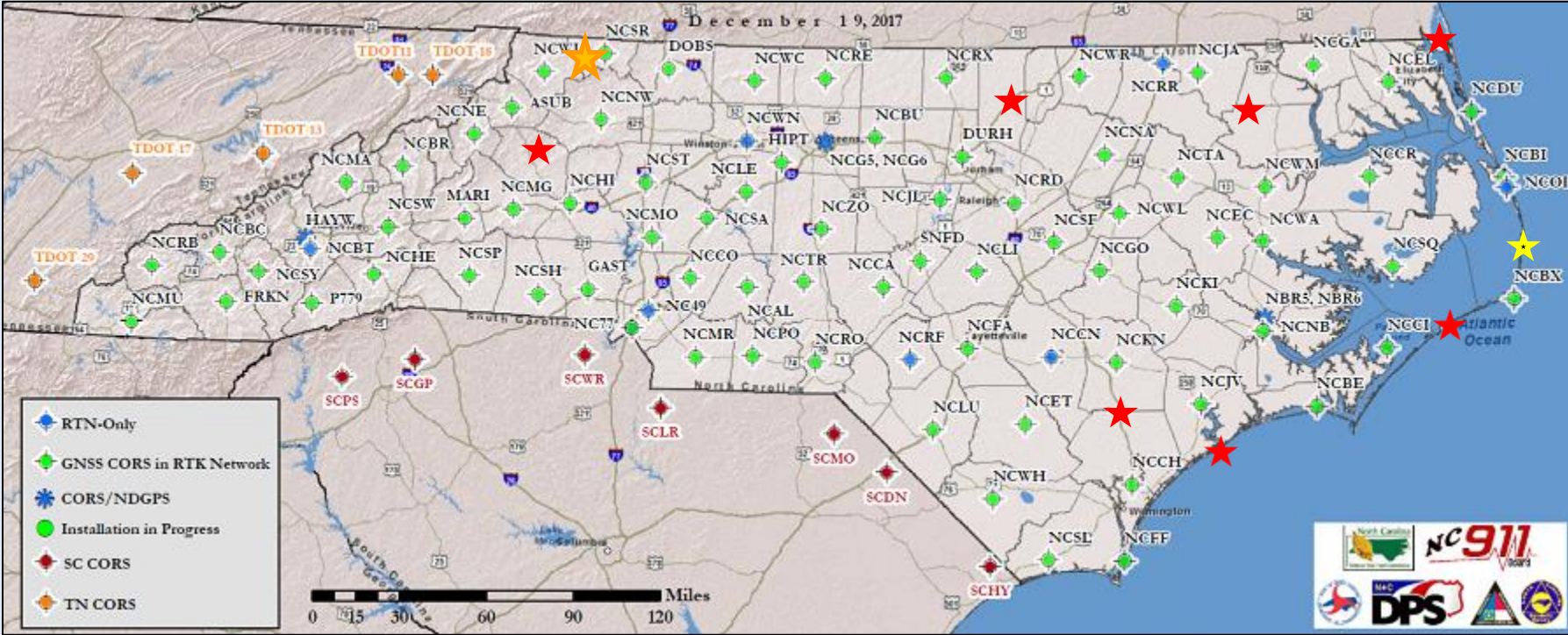
Geodetic Control



North Carolina Emergency Management



North Carolina (NC) Continuously Operating Reference Station (CORS) Network



Future CORS location = ★
 CORS installed = ★
 Earthquake CORS = ★

North Carolina Emergency Management

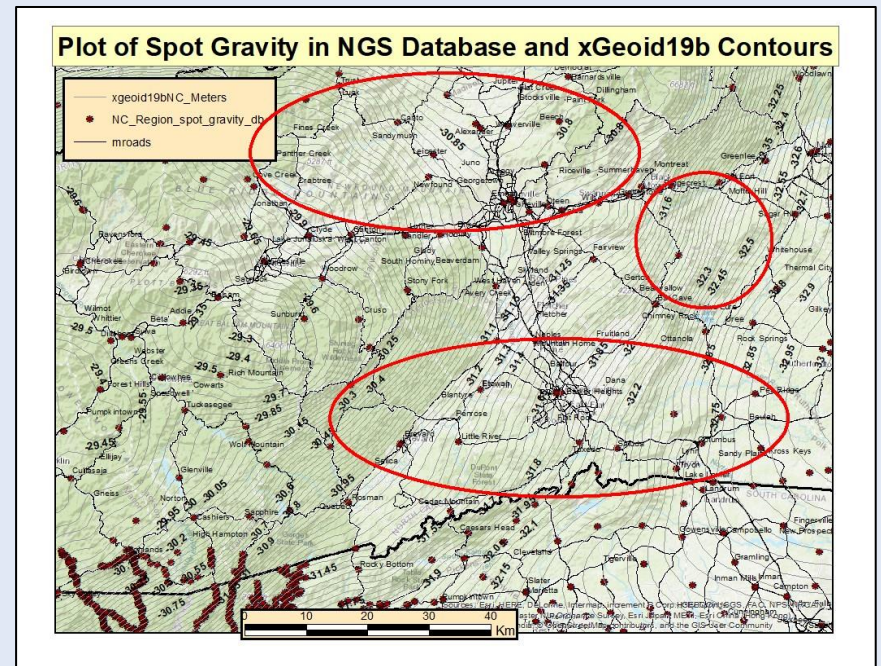
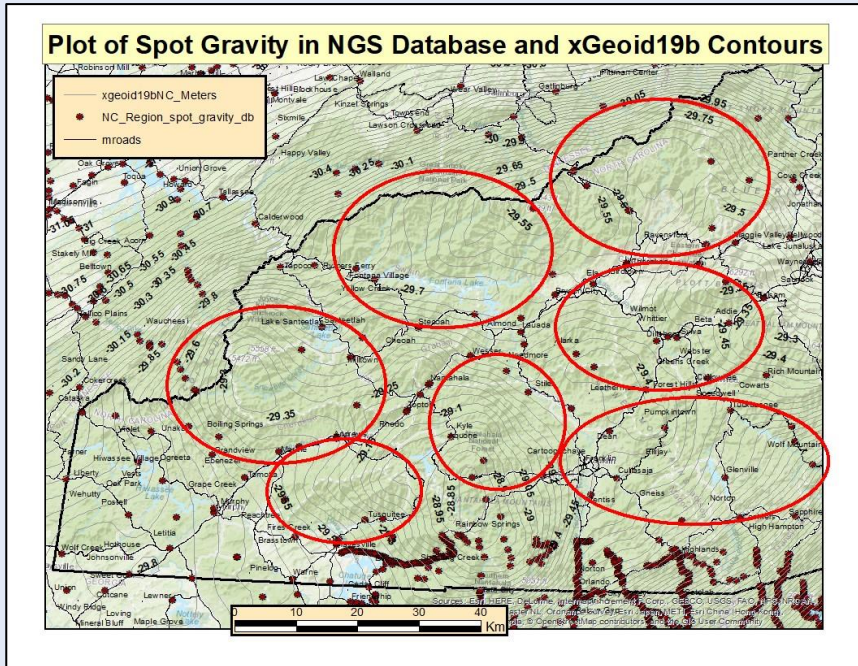


Gravity Data Collection

- New gravity marks established (relative and absolute)
 - Partnered with NGS to establish eleven (11) new absolute gravity stations in western North Carolina (NC)
 - Observations completed in western NC on 11/14/19
 - Obtained two (2) relative gravity meters on loan (January – December 2021) from the National Geodetic Survey

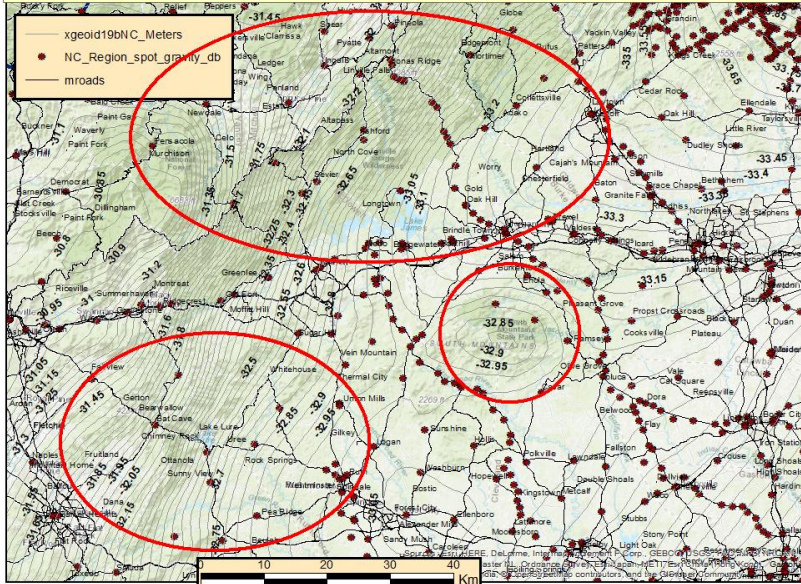


Gravity Data Collection

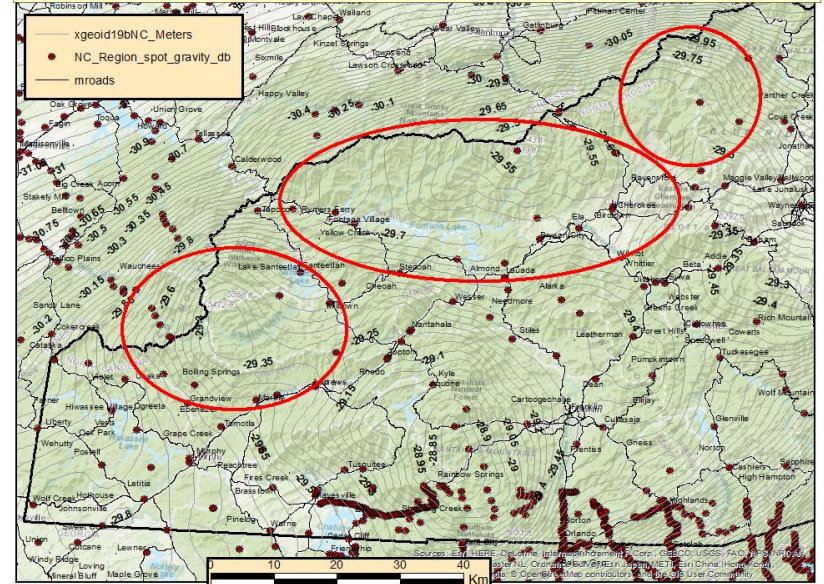


Gravity Data Collection

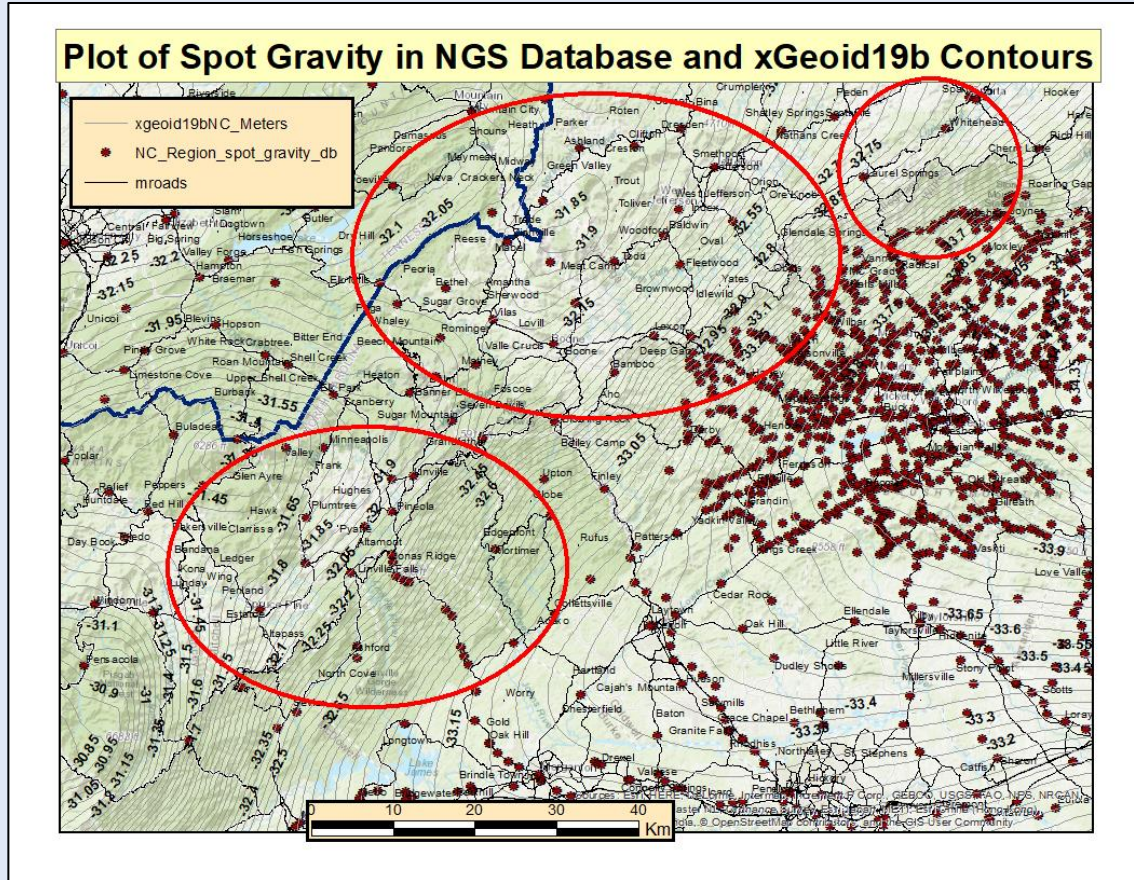
Plot of Spot Gravity in NGS Database and xGeoid19b Contours



Plot of Spot Gravity in NGS Database and xGeoid19b Contours

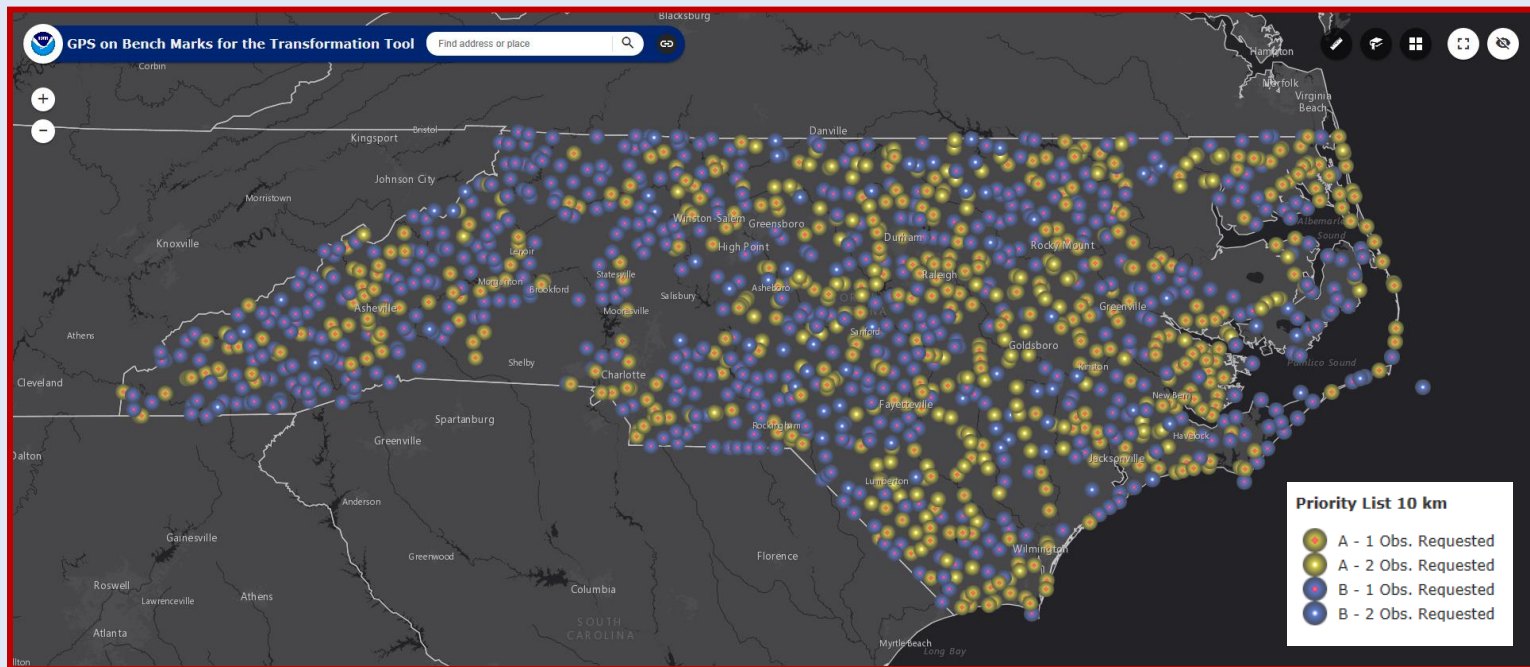


Gravity Data Collection



National Geodetic Survey GPS on Bench Marks 2020/2021

- 2020
 - NGS has prepared a list of geodetic monuments that we review for possible GNSS data collection

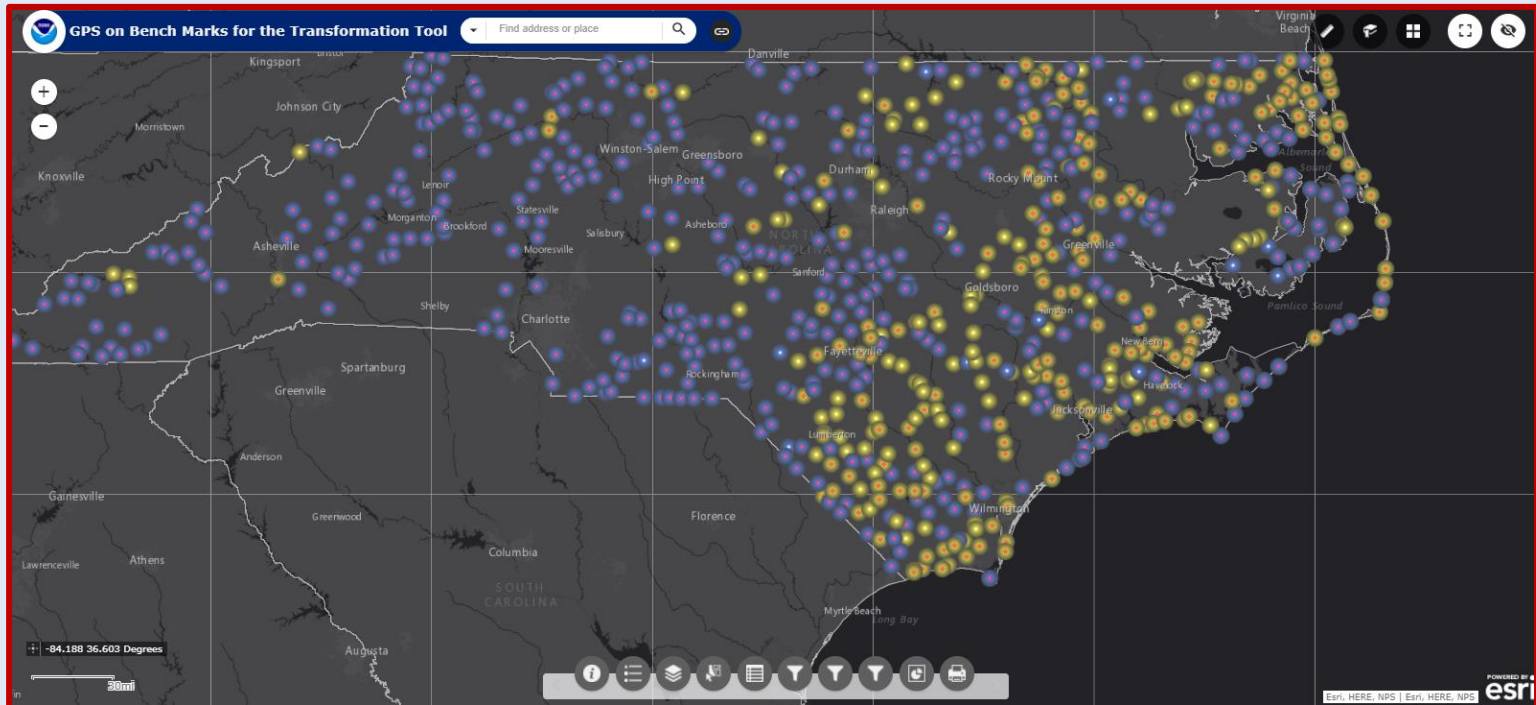


North Carolina Emergency Management



National Geodetic Survey GPS on Bench Marks 2020/2021

- 2021 (status as of 5/31/2021)

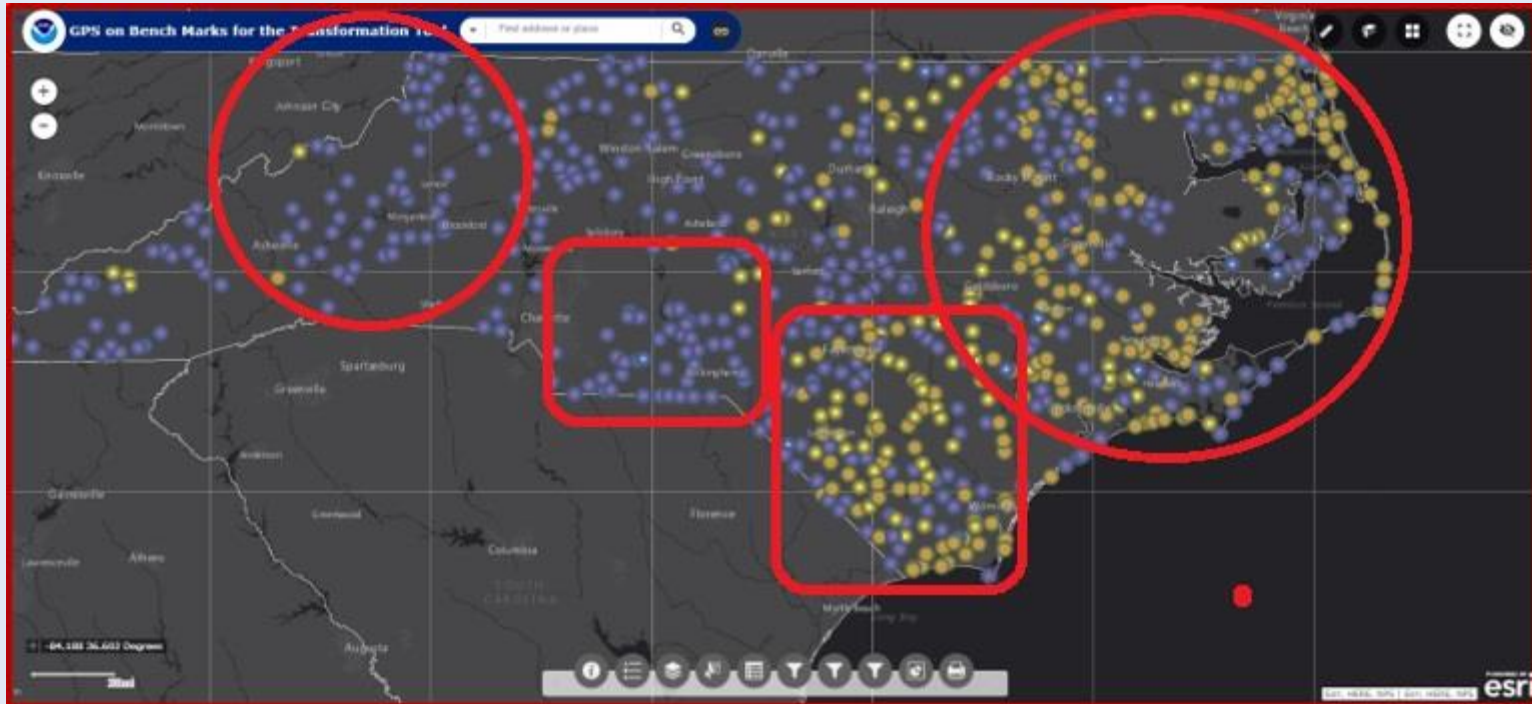


North Carolina Emergency Management



National Geodetic Survey GPS on Bench Marks 2020/2021

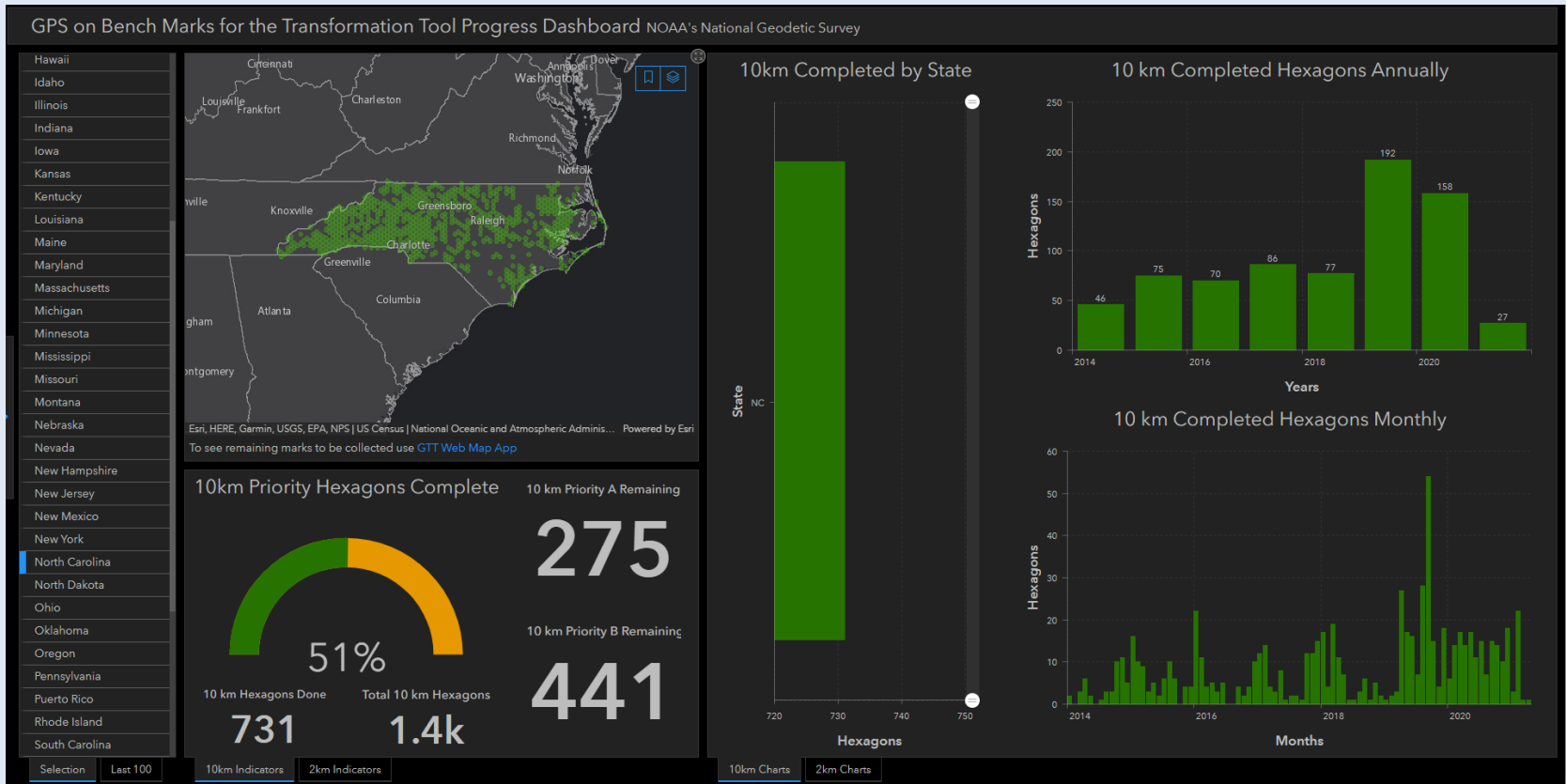
- Projects in progress, 97% complete



North Carolina Emergency Management



North Carolina's Progress Dashboard



North Carolina Emergency Management

