

# Statewide Orthoimagery Program

Ben Shelton

NC Center for Geographic Information and Analysis

January 8, 2024

# Proposed Orthoimagery Program Cycle

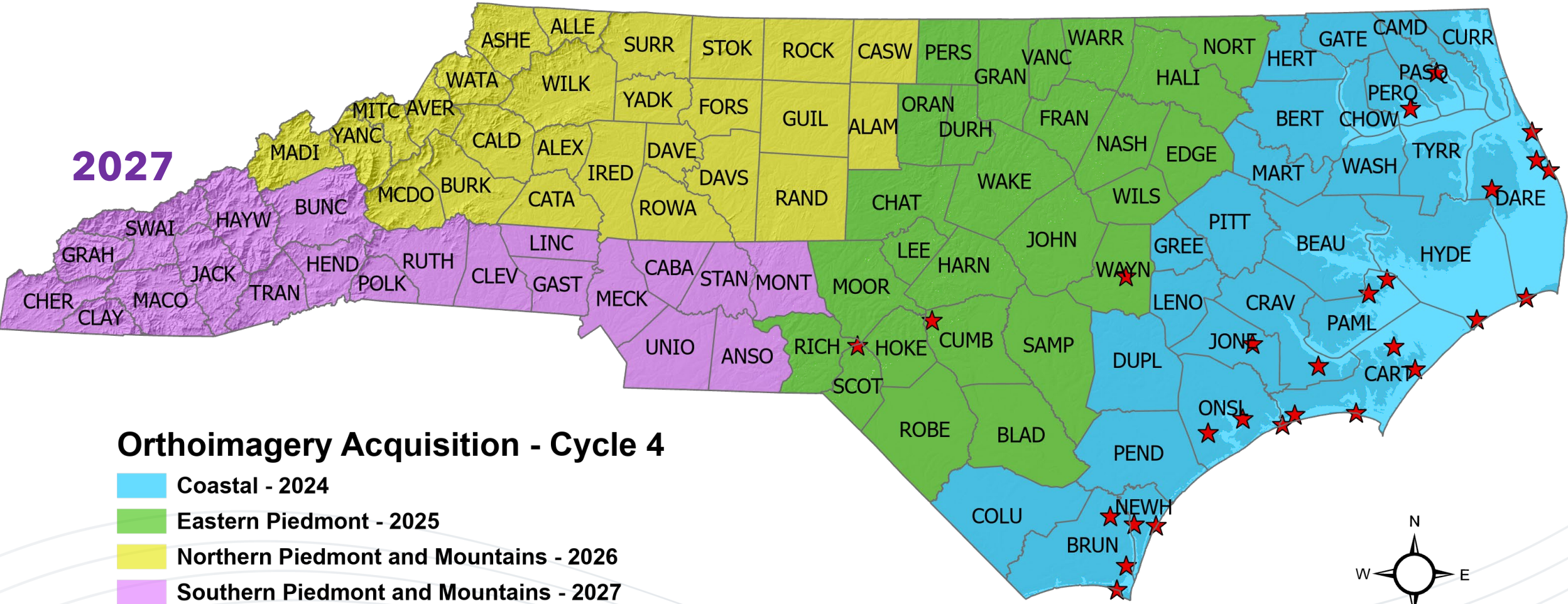
## 4-Year Cycle

2026

2025

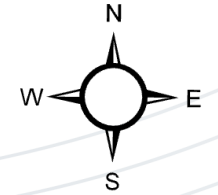
2024

2027



### Orthoimagery Acquisition - Cycle 4

- Coastal - 2024
- Eastern Piedmont - 2025
- Northern Piedmont and Mountains - 2026
- Southern Piedmont and Mountains - 2027
- ★ Military Installations



# Orthoimagery Deliverables 2024

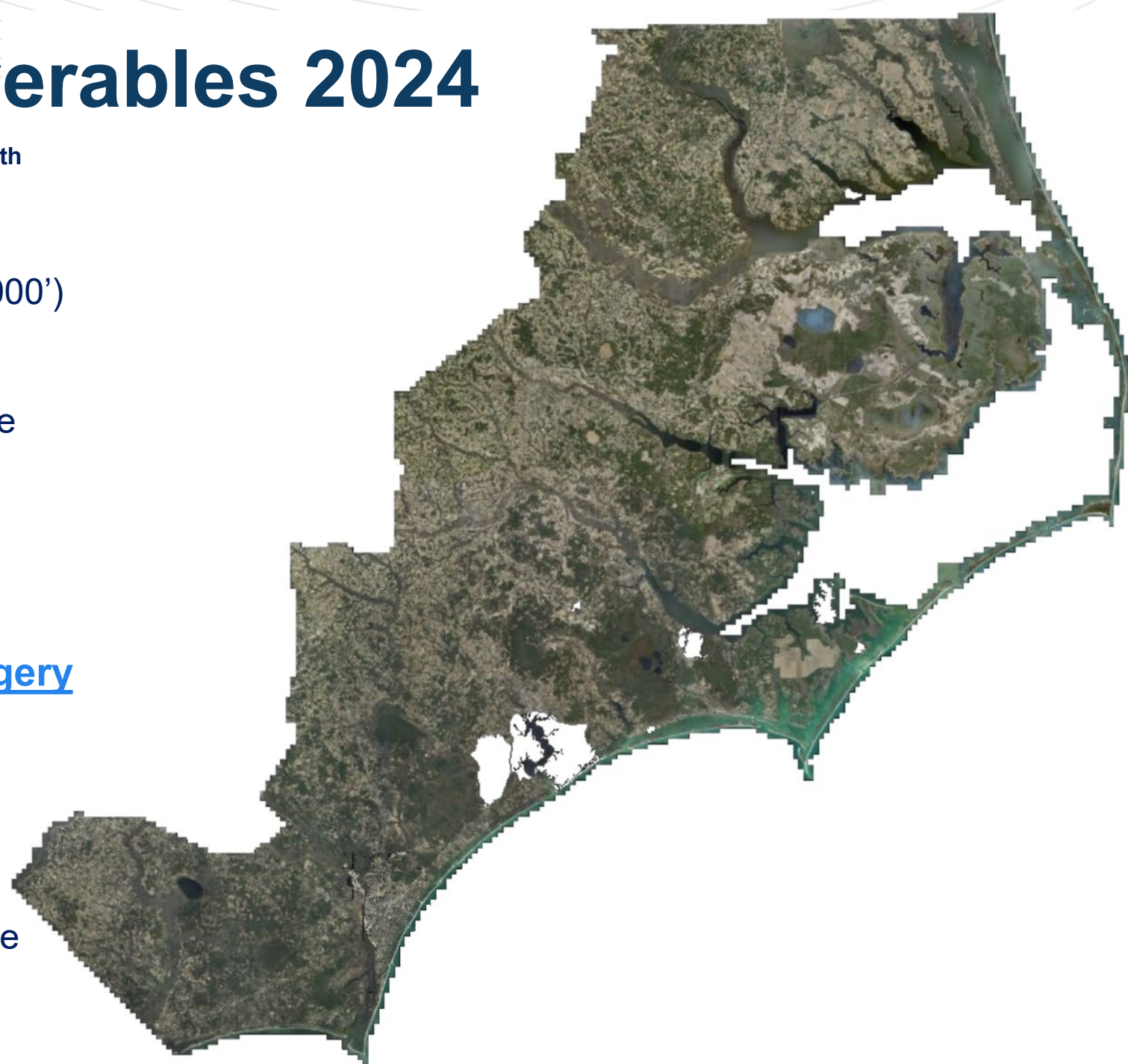
## NC 911 PSAP Deliveries – December 3<sup>rd</sup> – 5<sup>th</sup>

- Full Resolution TIFF Tiles (5000' by 5000')
  - 4-Band (RGBIR)
- 20:1 Compressed MrSID Tiles (5000' by 5000')
  - 4-Band RGBIR
  - 3-Band RGB
- 50:1 Compressed MrSID Mosaic Single File (County 7-mile Rectangle)
  - 3-Band True-Color RGB

## NC OneMap Imagery

<https://www.nconemap.gov/pages/imagery>

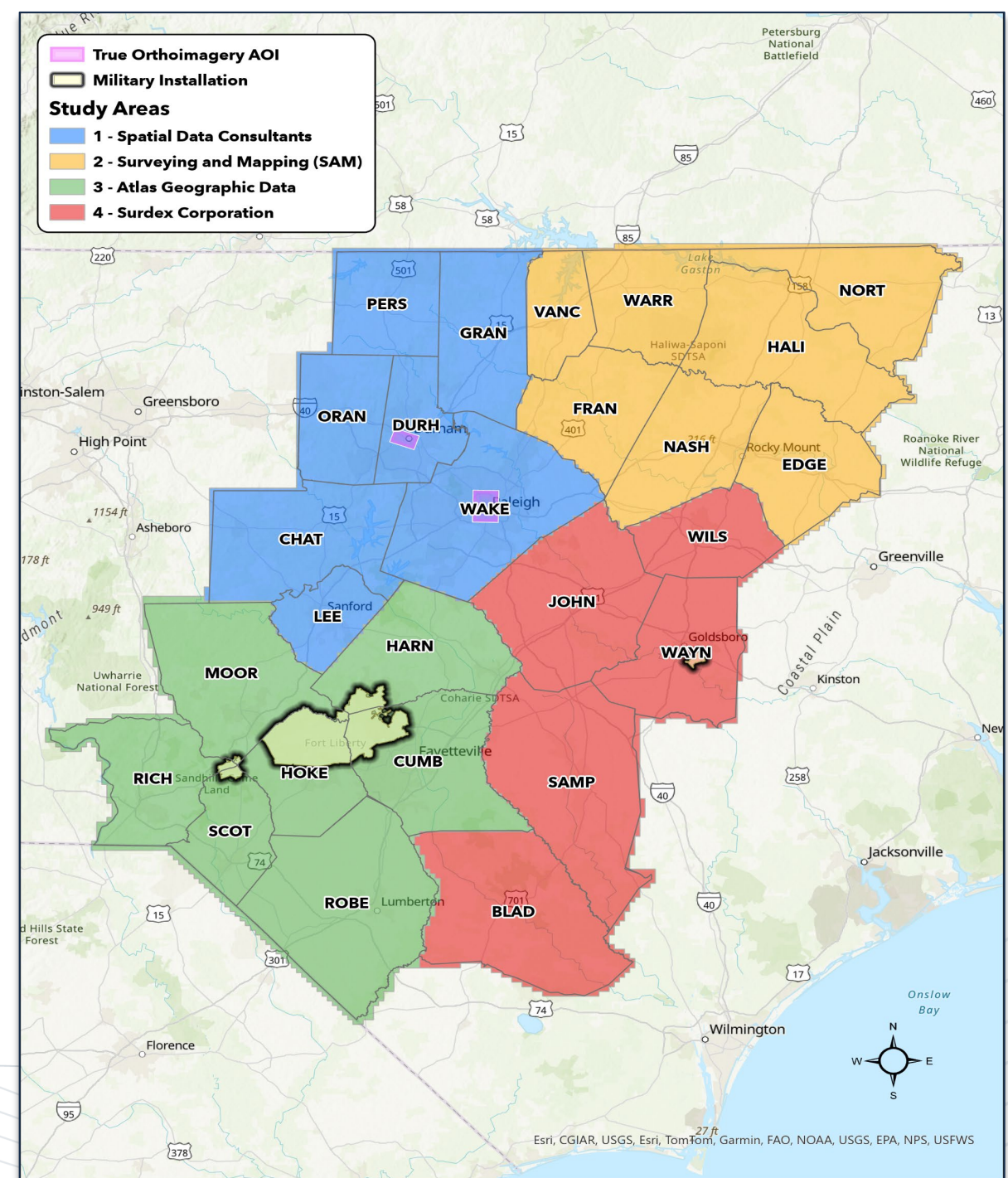
- Services:
  - Single year service – 4-Band RGBIR
  - Orthoimagery\_latest – 3-Band
  - Orthoimagery\_all – 3-Band
- Downloads:
  - 50:1 Compressed MrSID Mosaic Single File
  - 20:1 Compressed MRSID Tiles



# 2025 Project Area

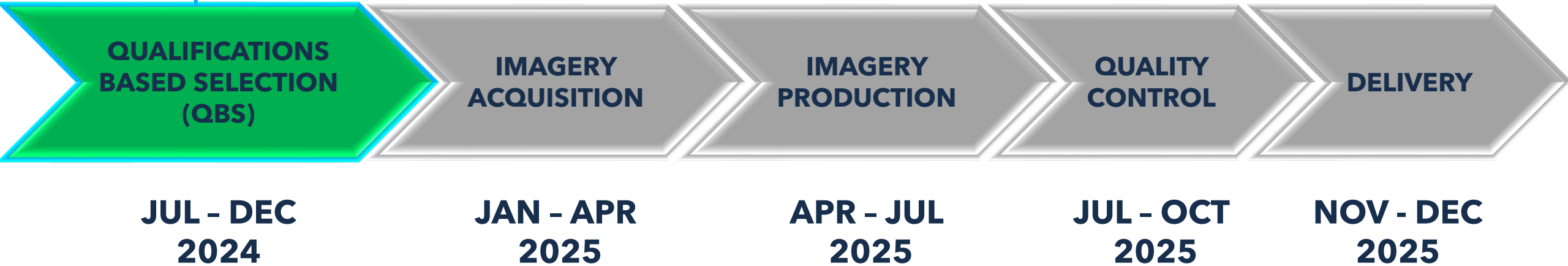
- 26 Counties
- 15,141 square miles
- True Orthoimagery – SA1
  - Raleigh
  - Durham
- Military Coordination – SA3 & SA4

Study Area	Vendor	Number of Tiles	Square Miles	Number of Counties
1	Spatial Data Consultants	3,948	3,540	7
2	Surveying and Mapping, LLC (SAM)	4,074	3,653	7
3	Atlas Geographic Data	4,793	4,302	7
4	Surdex Corporation	4,070	3,650	5
<b>Total</b>		<b>16,885</b>	<b>15,145</b>	<b>26</b>



# 2025 Project Schedule

Changed to a multi-year  
Pre-qualification Process



# Proposed Orthoimagery Program Cycle

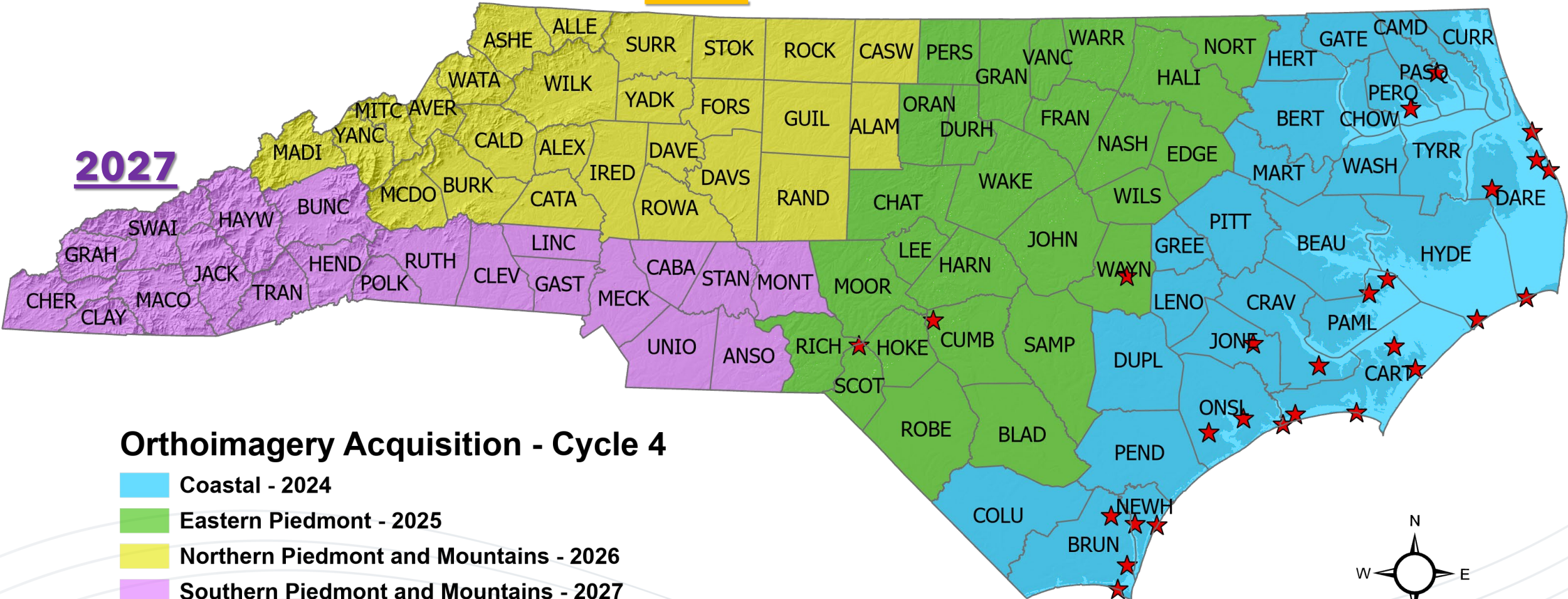
4-Year Cycle

2026

2025

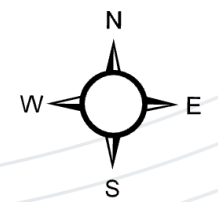
2024

2027



## Orthoimagery Acquisition - Cycle 4

- Coastal - 2024
- Eastern Piedmont - 2025
- Northern Piedmont and Mountains - 2026
- Southern Piedmont and Mountains - 2027
- ★ Military Installations





Ben Shelton

919.754.6377

[Ben.Shelton@nc.gov](mailto:Ben.Shelton@nc.gov)

<https://www.nconemap.gov/pages/imagery>