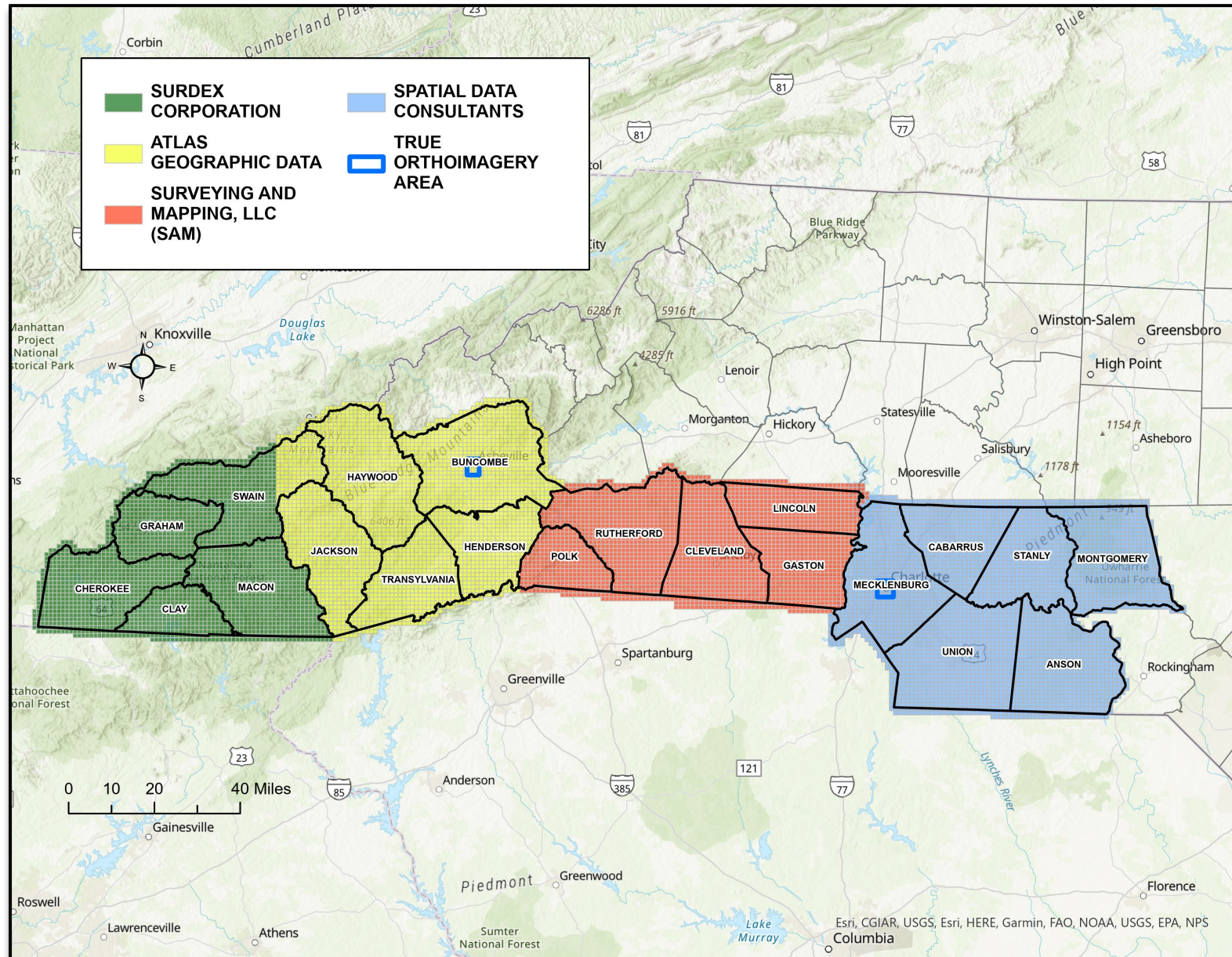


Statewide Orthoimagery Program

Ben Shelton, GISP
GIS Project Manager
NC Center for Geographic Information and Analysis
Ben.Shelton@nc.gov



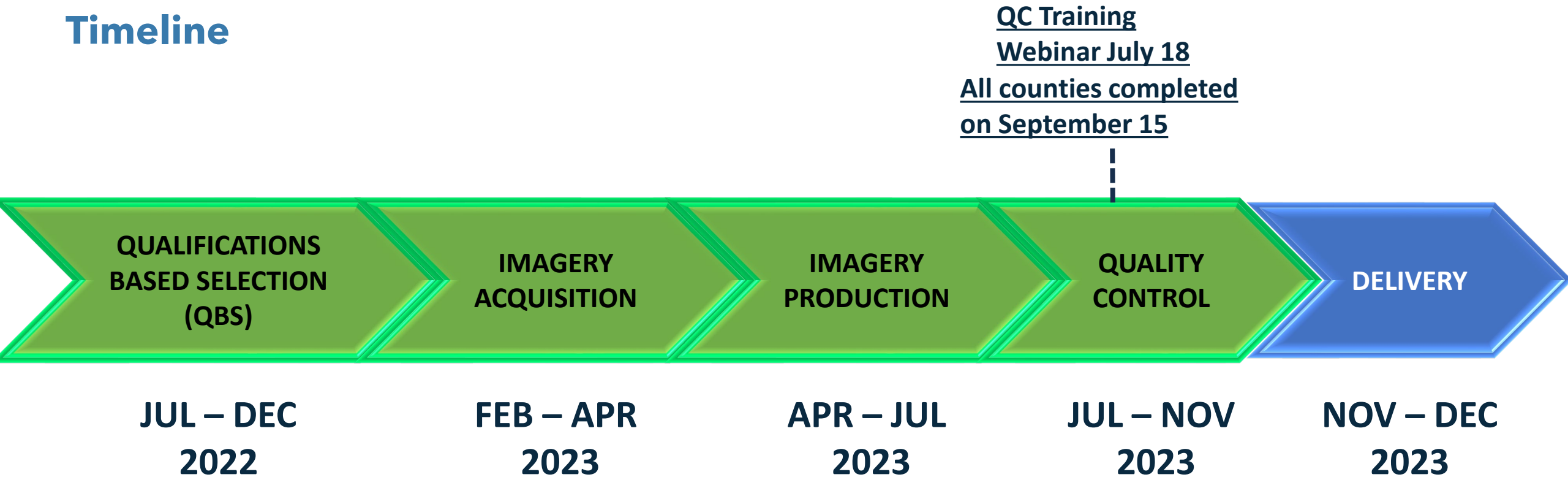
2023 Southern Piedmont & Mountains



- 21 counties
- 10,397 square miles
- 50% of Project Area considered 'Mountain Acquisition'
- True Orthoimagery for Asheville & Charlotte
- 4-Band Ortho Products continuing to be developed for this phase to complete entire state of CIR

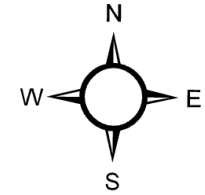
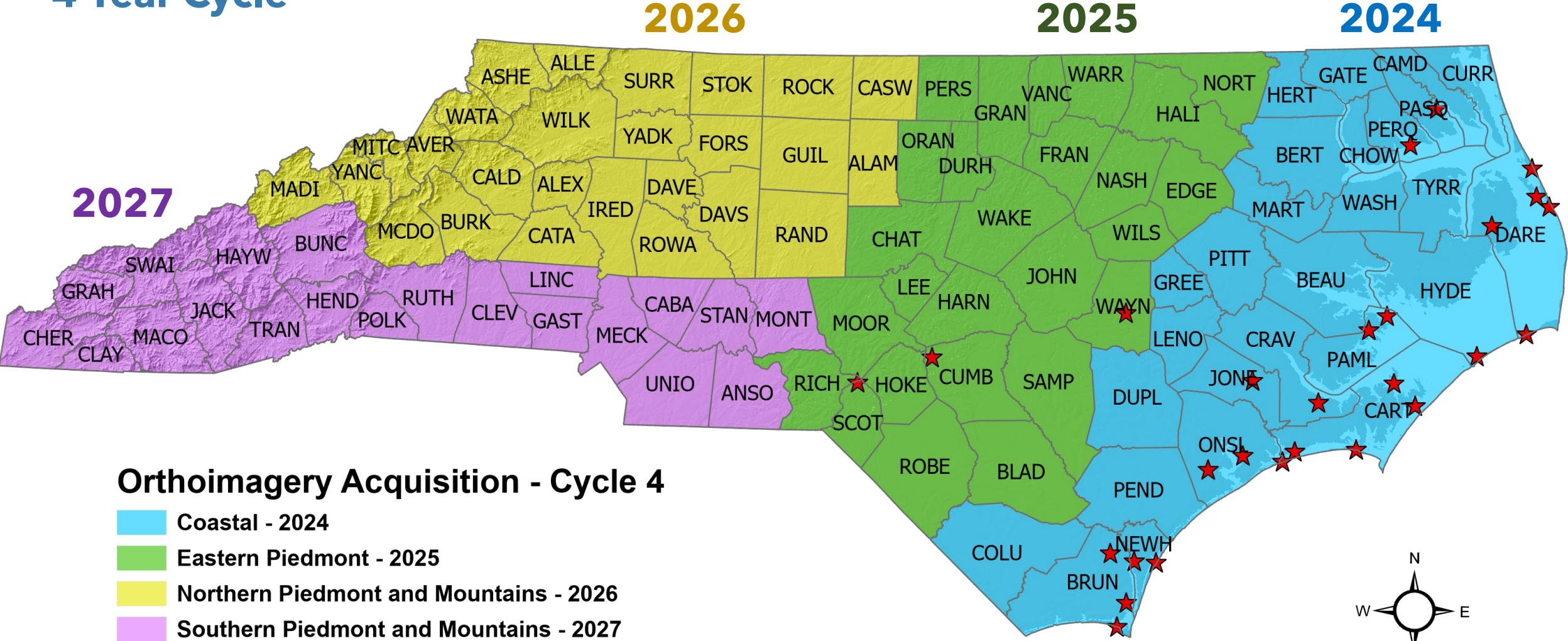
2023 Southern Piedmont & Mountains

Timeline



Proposed Orthoimagery Program Cycle

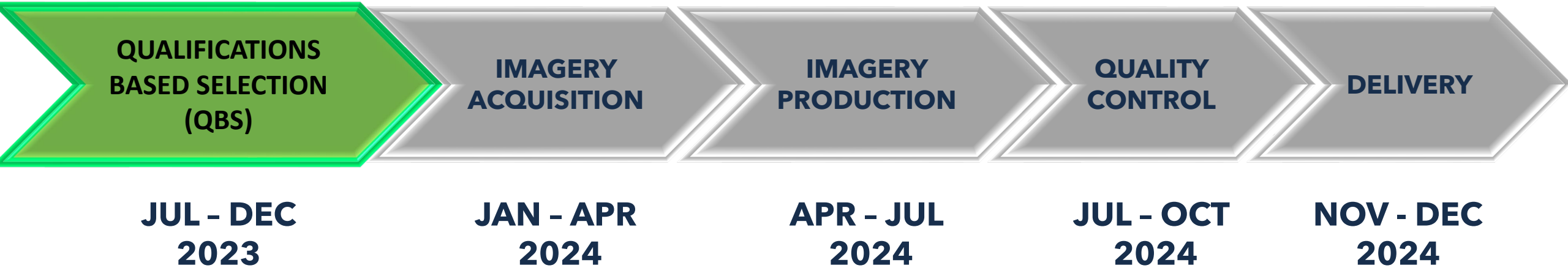
4-Year Cycle



Orthoimagery Acquisition - Cycle 4

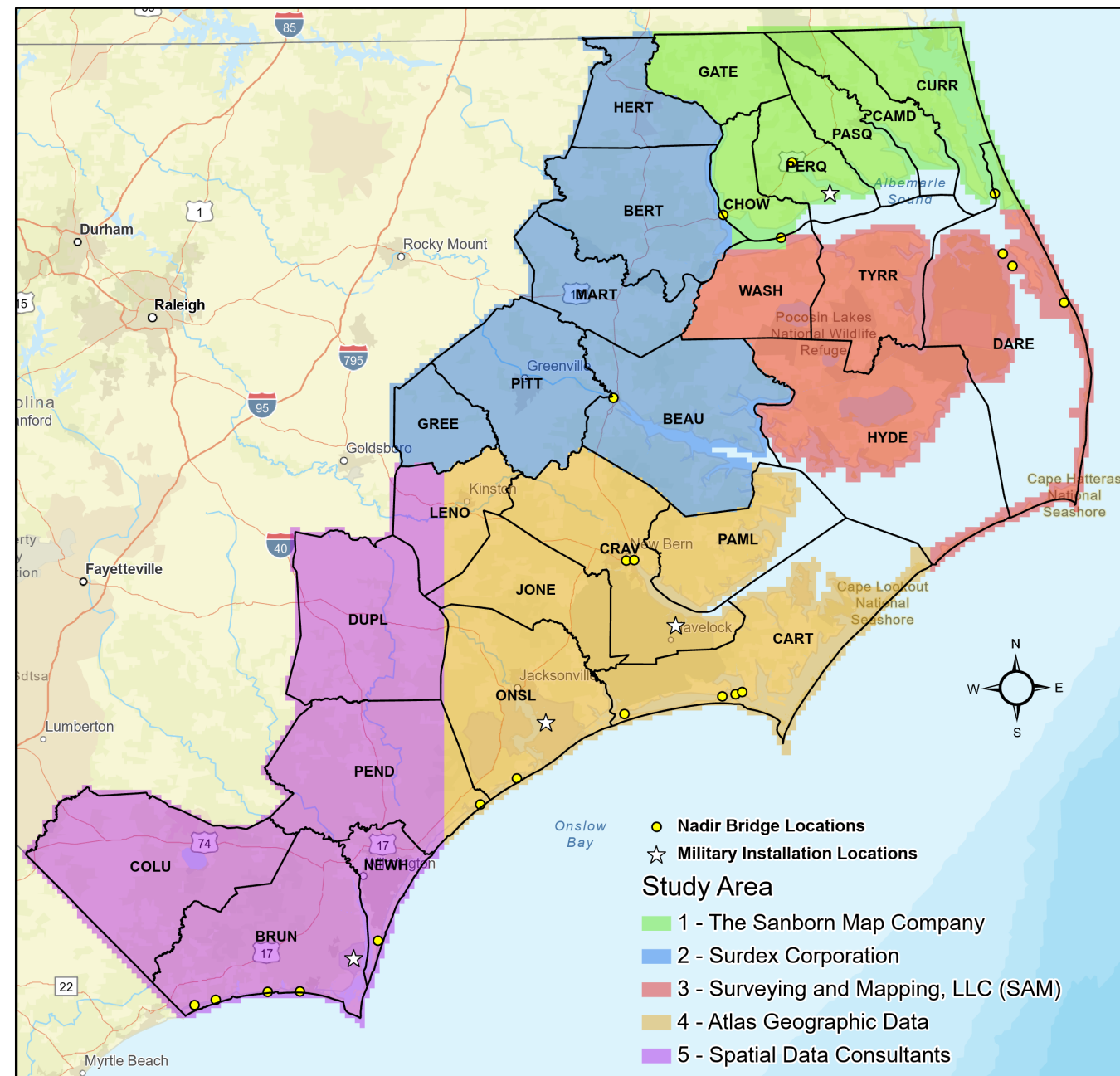
- Coastal - 2024
- Eastern Piedmont - 2025
- Northern Piedmont and Mountains - 2026
- Southern Piedmont and Mountains - 2027
- ★ Military Installations

2024 Project Schedule



2024 Coastal

- 27 counties
- 15,682 square miles
- Focus on early acquisition due to early leaf-on conditions
- Nadir flight requirements for 21 bridges in project area
- Close coordination with military installations
- 4-Band Ortho Products continuing for Cycle 4



Ben Shelton, GISP
GIS Project Manager
NC Center for Geographic Information and Analysis
Ben.Shelton@nc.gov

facebook.com/NCDIT

twitter.com/NCDIT

linkedin.com/company/ncdit

