



Municipal Boundaries Working Group

***Geographic Information Coordinating
Council
August 11, 2021***

Integrity

Innovation

Teamwork

Excellence



Municipal Boundaries Background

- Maintain a single municipal boundary resource to serve the needs of emergency management, state agencies, US Census Bureau, and other stakeholders.
- Streamline the boundary change reporting process and reduce reporting burden on local governments.
- Provide regular review and quality control opportunities for all partners
- Municipal Boundaries Working Group has developed content standards, core attributes, and a process flow to achieve this goal



Municipal Boundary Working Group Contributors

Member	Member Organization
Alice Wilson	City of New Bern
Allison Shafer	U.S. Census Bureau
Amity Little	NCDOT GIS Unit
Bob Coats (Co-Chair)	Office of State Budget & Management
Caitlin Saunders	N.C. League of Municipalities
Christopher Nida	N.C. League of Municipalities
David Baker	N.C. Association of County Commissioners
David Giordano	Center for Geographic Information and Analysis
Doug Huffman	N.C. Department of Revenue
Erin Lesh	NCDOT GIS Unit
Gary Thompson	N.C. Department of Public Safety

Member	Member Organization
Haley Haynes	Office of the Secretary of State
John Bridgers (Co-Chair)	Office of the Secretary of State
Marcus Bryant	Durham City/County GIS
Michael Cline	N.C. Office of State Budget and Management
Paul Badr	GPI
Rich Elkins	Office of the Secretary of State, Land Records Management
Steve Averett	City of Greensboro
Tabitha Ashe	N.C. Department of Revenue
Tonda Shelton	N.C. Department of Public Safety
Alan Coats	N.C. Department of Public Safety



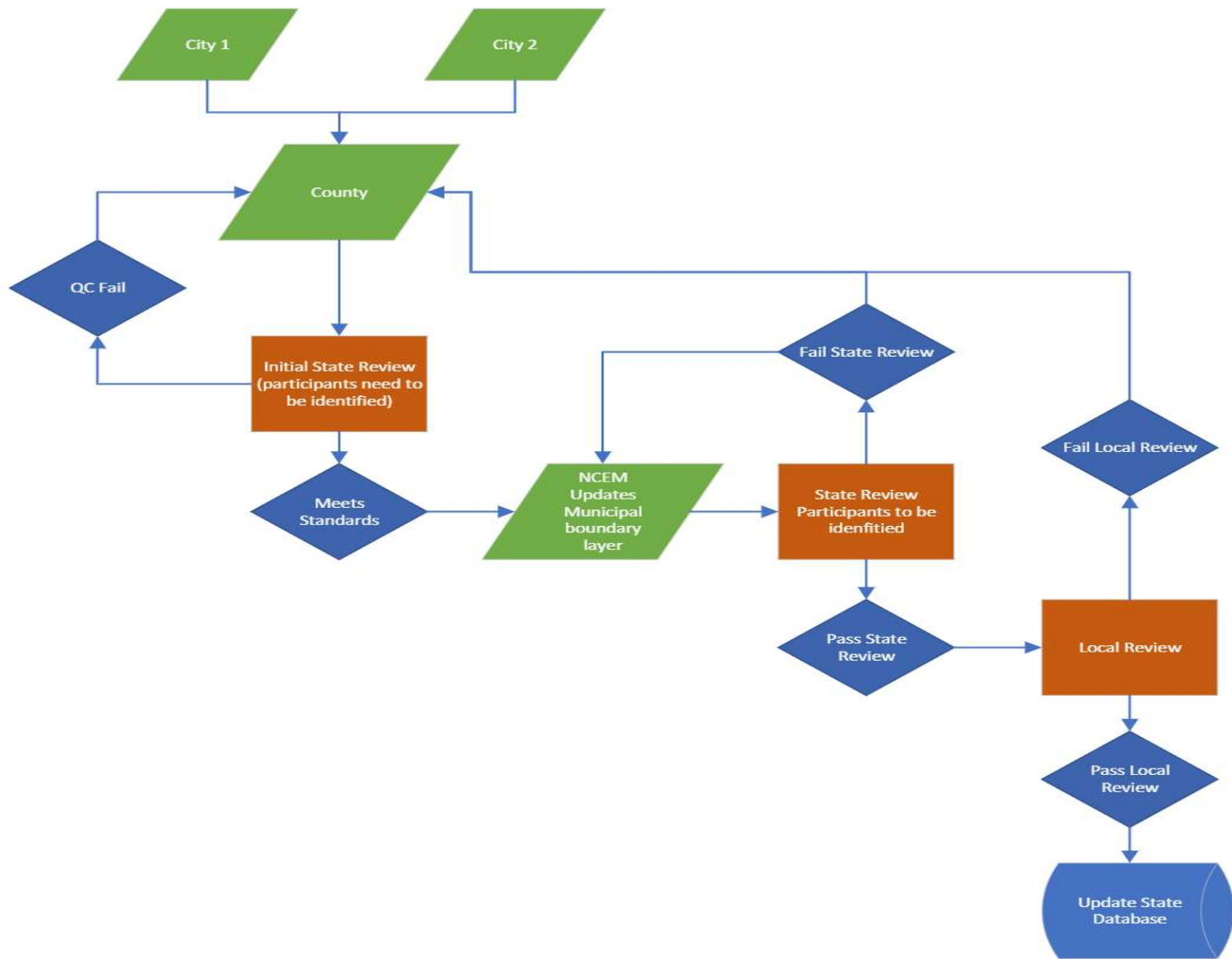
Annexation Layer Attributes

Field Name	Description	Type	Example	Data Entry
MunicipalName*	Municipal Boundary Name in caps	Text	CITY OF RALEIGH	required
EffectiveDate*	Effective Date of the annexation	Date	7/21/2021	required
AdoptedDate*	Date ordinance is adopted by local council	Date	4/20/2021	required
County*	County Name in caps	Text	WAKE	required
FIPS Code*	7 digit FIPS code for municipalities (2 digit state 5 digit town) or 4 digit code for Tribal boundaries	Text	3755000	required
Source*	Source of digital submission (Municipal/County)	Text	County	required
LocalName*	Local Annexation Name- name used locally to reference the annexation	Text	Watts Property	optional
OrdinanceNumber*	Ordinance Number	Text	AN-2021-5	required
DeedBookPage*	Deedbook/page	Text	102-1234	required
DeedRecord*	Date Deed Recorded	Date	4/1/2021	optional
MapbookPage*	MapBook or Platbook and Page (If the map is attached as an additional page to the ordinance, use the same book/page as the ordinance)	Text	102-1234	required
LocalAcres*	Local Reported Acreage	Number	16.8	optional
SubmissionDate	Date data submitted to SOS	Date	5/1/2021	required
EffYear	Effective year (calculated from Effective date)	Number	2021	Calculated
SOSApproved	Indicates that the SOS has approved the submission to be incorporated into the state layer	Text	Yes	State maintained
DeannexationDate*	Date the area was removed from the municipality	Date	12/1/2025	optional



Municipal Boundary Attributes

Field Name	Description	Type	Example	Data Entry
MunicipalName	Municipal Boundary Name	Text	SAINT PAULS	Required
Alias	Alternative spelling of the municipal name	Text	St. Pauls	Required
FIPS Code	7-digit FIPS code (2 digit state 5 digit town)	Text	3758720	Required
Census Type	Description of place type (Town, City, Village, etc.)	Text	Town	Required
OriginalSource	Original source of statewide municipal boundary shape	Text	Local data	Required
Incorporation	Year of municipality incorporation	Date	1909	Required
TownCode	4 digit code	Text	0639	Required
LastUpdate	Last date the border was edited at the state - this will be sometime in 2021 for everything to begin	Date	7/1/2021	Updated yearly
SOSApproved	Date the SOS Office last approved the municipality shape. This date should be soon after the last updated date.	Date	8/1/2021	Updated yearly
LocalApproved	Date the municipality last approved the municipality shape. This date should be soon after the last updated date.	Date	1/1/2022	Updated yearly
DOTApproved	Date DOT last approved the municipality shape. This date should be soon after the last updated date.	Date	8/2/2021	Updated yearly
County	County name in caps	Text	ROBESON	Required
Unincorporation	Date the municipality was unincorporated	Date	12/1/2025	optional





Municipal Boundaries – Next Steps

- Municipal Boundaries Working Group has developed content standards, core attributes, and a process flow to establish a single municipal boundary resource to serve the needs of stakeholders.
- This process was successfully tested in a pilot test of 10 counties and will be expanded to 25 counties within 6 months.
- Outreach and training will continue during this time
- The Municipal Boundaries Working Group asks GICC approval



Contact



Bob Coats
984-236-0687
Bob.Coats@osbm.nc.gov

Governor's Census Liaison,
North Carolina State Data Center
Demographic and Economic Analysis Section
NC Office of State Budget and Management