



Infrastructure Working Group Preliminary Findings

Colleen Kiley, CGIA

Matt Helms, City of Charlotte

NCDIT  NORTH CAROLINA
DEPARTMENT OF
INFORMATION
TECHNOLOGY

Infrastructure Working Group Tasks

Document
Common Layers

Investigate
Security Issues

Document Use
Cases

Investigate
industry
standards and
best practices

Data sharing
agreement
examples

Data sharing
policy examples

Disclaimer
examples

Data Sharing
methods

Our Process



Use Cases



Interviews



Research



Surveys



Group Discussion

A hand is shown in the upper left, moving a black chess piece (a pawn) on a chessboard. The chessboard is in the foreground, and the background is a soft, out-of-focus light gray. The text is overlaid on the right side of the image.

Data Sharing Options Risk vs Reward

Why share openly?

We are able to prevent service disruptions

We have very few requests that can't be handled by simply directing them to our Esri Hub site.

Helps developers understand what is available to them when considering property development.

we are able spend time developing robust datasets.

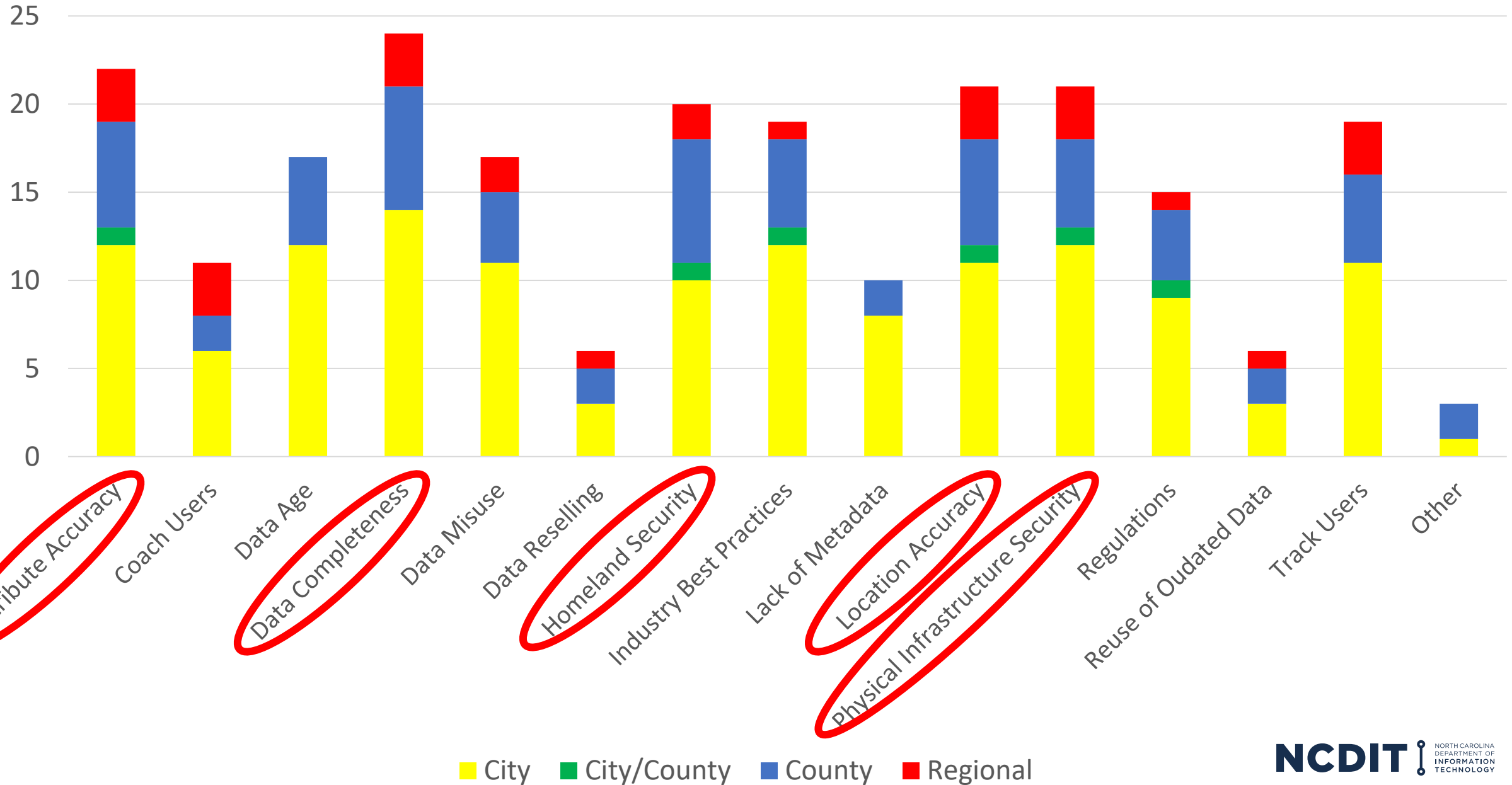
Why not share?

Homeland Security classifies utility data as sensitive and not to be shared outside of the organization.

We cannot verify the completeness or accuracy of the data.

Our water data used to be available to the public. We were asked to keep it internally as it was a direct target for domestic terrorism.

Factors Influencing Water Data Sharing Practices



Vision: Secure Data Sharing

- **Hybrid Open/By Request system**
- **One stop shop**
- **Credentials required**
- **Owner maintained**

- **Not impossible: HIFLD**

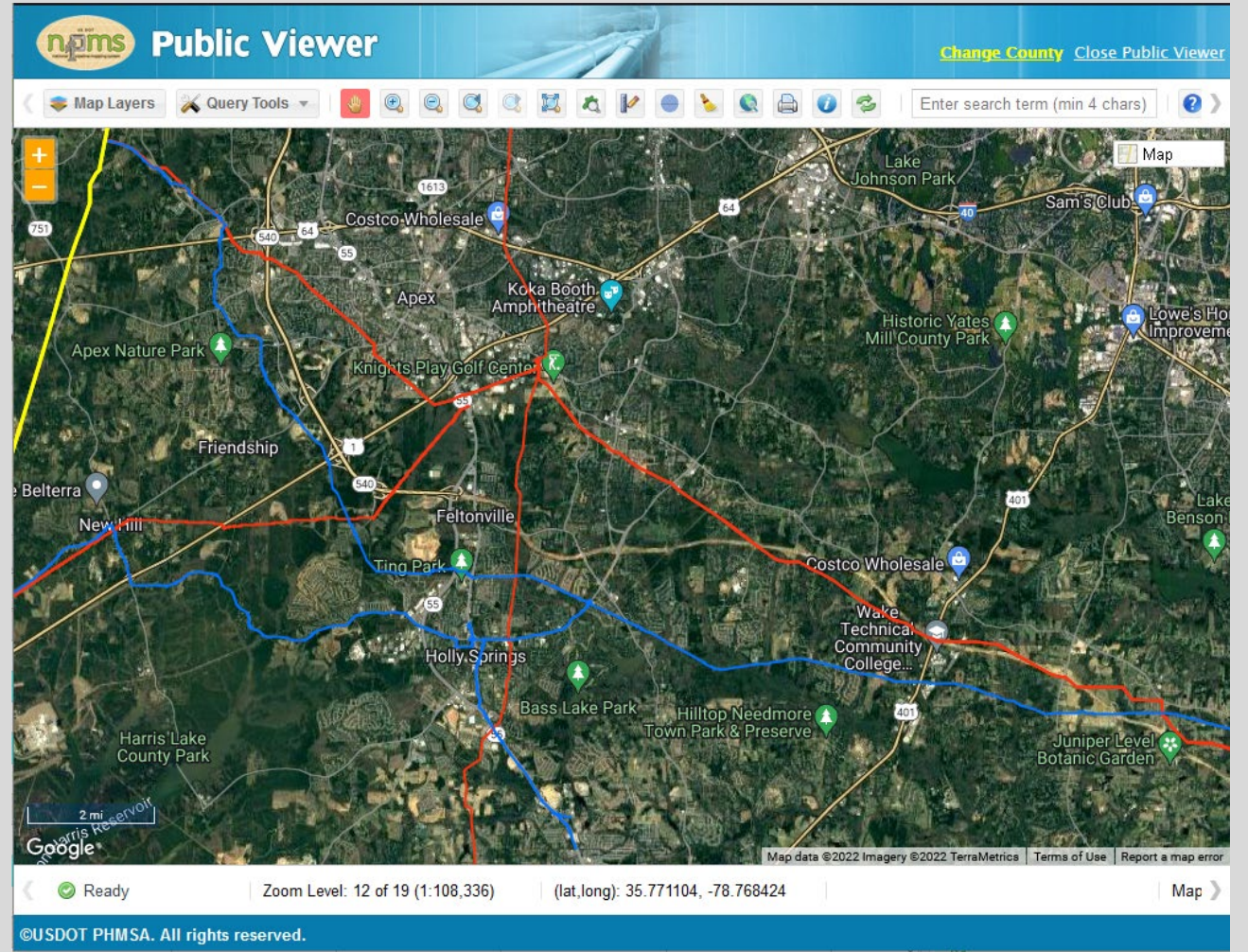
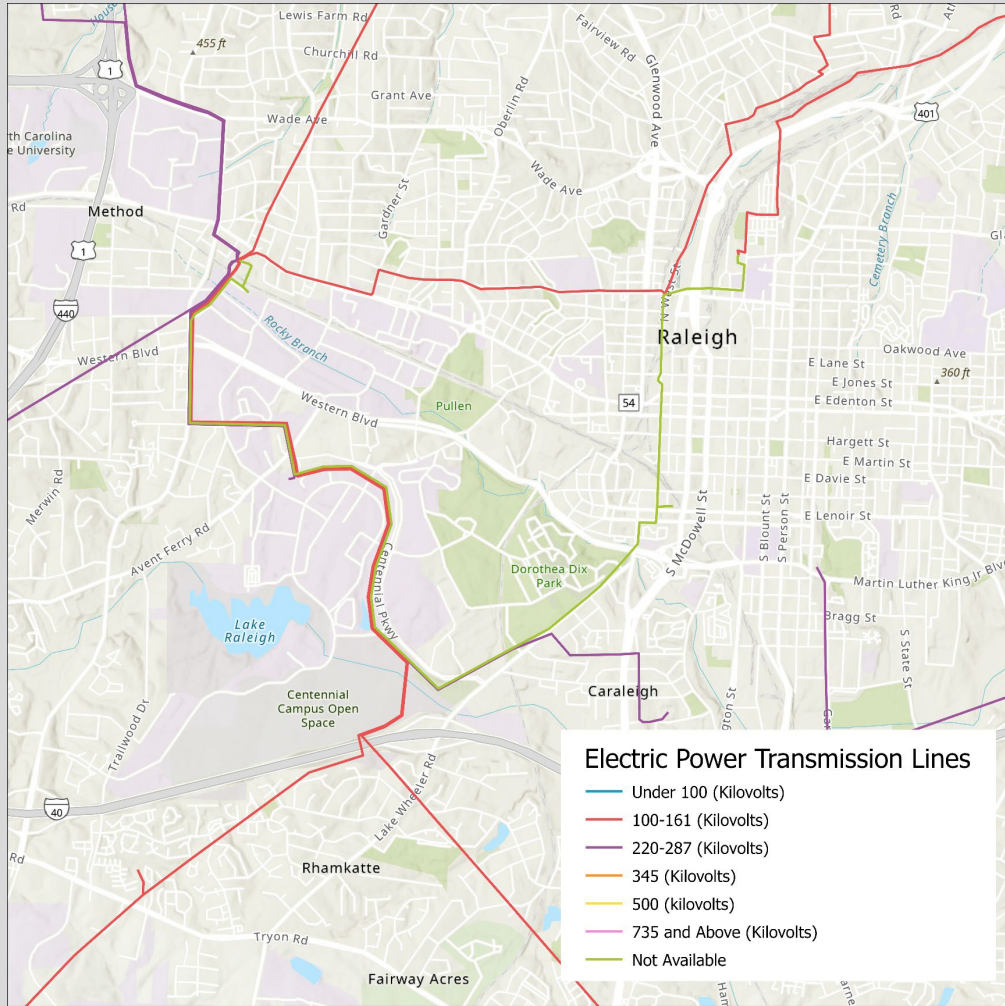


The Gray Areas

Where are the Best Practices?

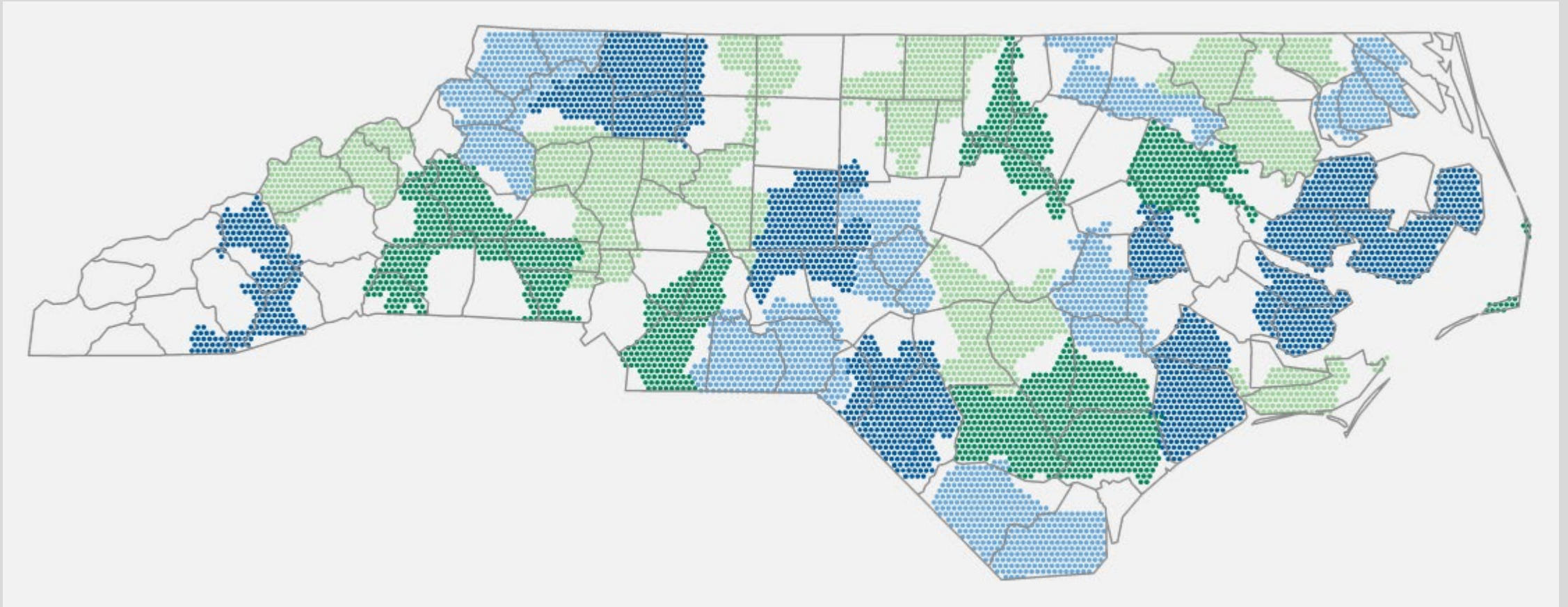


What is the best level of detail?



Sometimes it isn't easy: Service Areas

❖ What is a service area?



Recommendations for Local Data Providers

Data Provider Recommendations



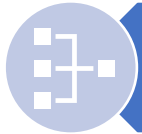
Write a data sharing agreement.



Write internal data maintenance and sharing procedures.



Write data disclaimers for webservices and metadata.



Evaluate and update geometric accuracy and completeness.



Evaluate and update attribute accuracy and completeness.



Complete metadata.



Develop secure regional data sharing partnerships.

Recommendations: GICC and State



Data Provider Recommendations



Revisit this topic periodically.



Engage industry professional and organizations.

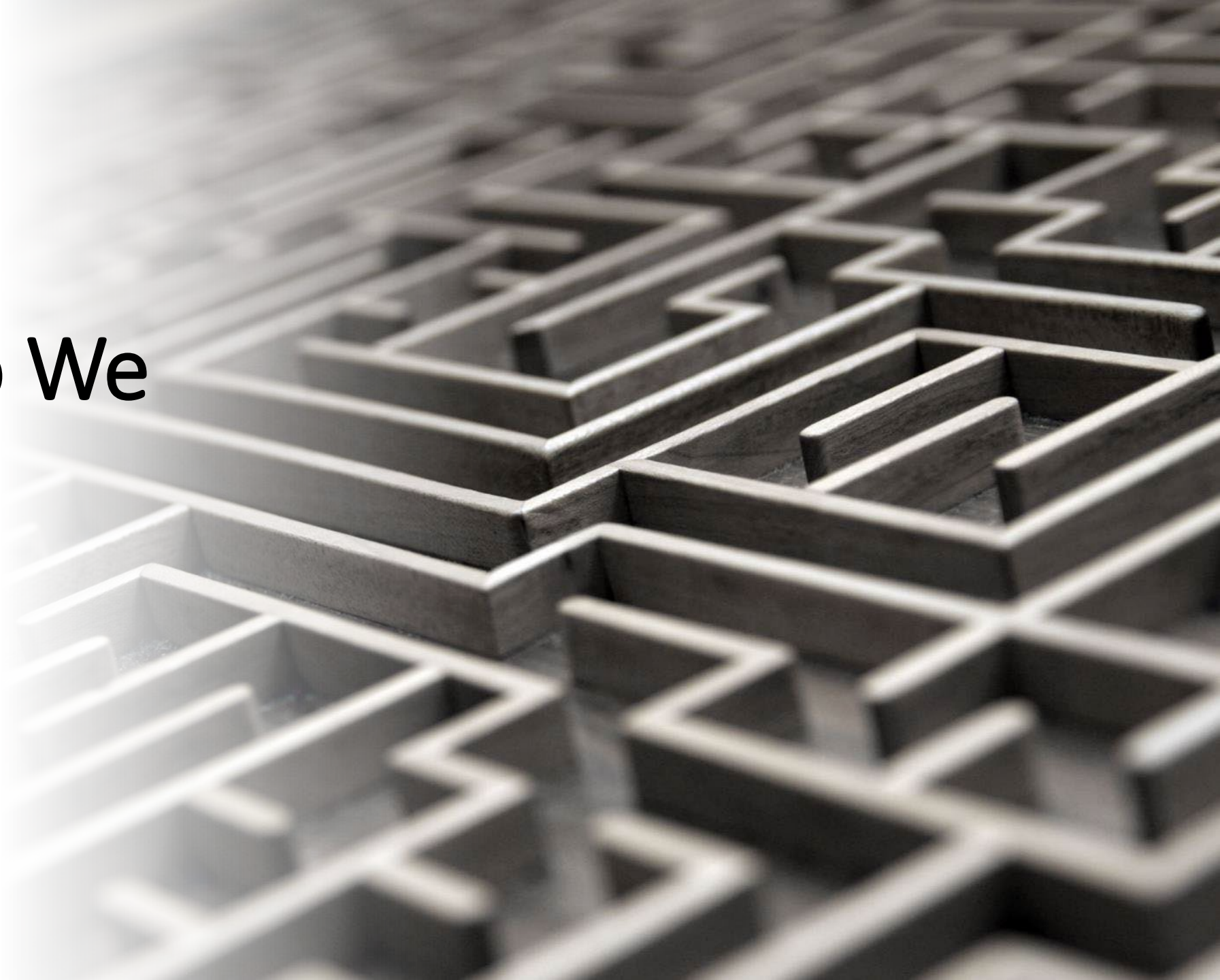


Task the metadata committee with creating an infrastructure template.



Monitor funding opportunities that could be used to improve infrastructure mapping.

Where Do We
Go From
Here?



Discussion



Talk Amongst Yourselfs

Are these the right recommendations?

Is there a recommendation we should have added?

Do you think that the data sharing agreements, policies, and disclaimer examples included in the report are sufficient to serve as templates for various data sharing methods?

Or

Does the working group need to develop a more generic template?

How do we engage industry and professional associations?

What can they help us achieve?

Where do we go from here?

What actions should the Council take?

Colleen Kiley, GISP, CFM
GIS Coordination Program Manager
Colleen.Kiley@nc.gov

Tim Johnson
State Geographic Information Officer
Tim.Johnson@nc.gov

Center for Geographic Information and Analysis

Connect with us:

[Facebook](#)

[Twitter](#)

[LinkedIn](#)

