



Emergency Management
NC DEPARTMENT OF PUBLIC SAFETY

North Carolina Geodetic Survey (NCGS): Positioning NC today and for the future!



**State Mapping Advisory Committee
January 11, 2023**

Building Footprints





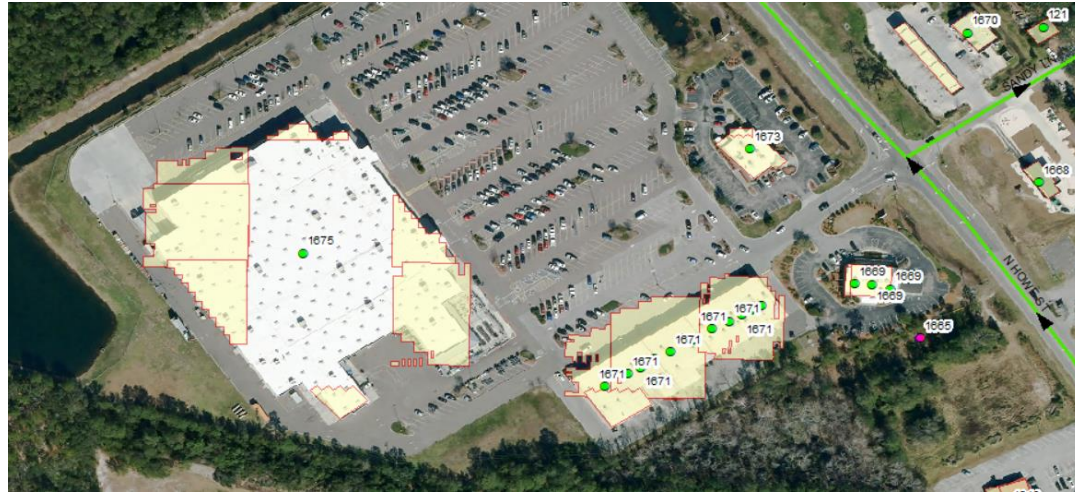
Building Footprint Plan

- Analyze and compare Brunswick County remote sensing feature extraction with manually extracted building footprints
 - Completed
- Developing pilot project
 - Johnston and Wake counties
- Continue performing manual extracted building footprints until we finish the pilot project and develop procedures and quality control plan for using automated remote sensing feature extraction for building footprint updates



Building Footprint Update Status

- Review of Brunswick County Building Footprints (remote sensing feature extract)
 - Review performed by NCEM and Brunswick County
 - Buildings with multiple footprints on top of each other
 - Non structure features were often included
 - Boats
 - Fields
 - Athletic courts
 - Airport runways
 - Natural features (e.g. waves, marshes, low vegetation)
 - Areas where imagery stopped would have lots of footprints in areas with no buildings





Building Footprint Update Status

Risk Building Footprint Refresh Current Status 1/10/2023

