

# GEOGRAPHIC INFORMATION COORDINATING COUNCIL

---

SPRING 2025 QUARTERLY MEETING

**2025 NC GIS CONFERENCE** 

# Check In and Get Ready!

---

CHECK IN QR CODE



MENTIMETER QR CODE



# GEOGRAPHIC INFORMATION COORDINATING COUNCIL

# Council Members

## Governor

- City of Greensboro
- GPI
- Department of Justice
- Colliers Engineering
- U.S. Environmental Protection Agency
- AECOM
- Person County
- University of North Carolina at Charlotte
- Cape Fear Council of Governments

## Senate

- N.C. 911 Board
- Charlotte Water
- CBRE

## House

- Duke Energy
- CACI, Inc.
- Retired GICC Chair

## Statutory Members

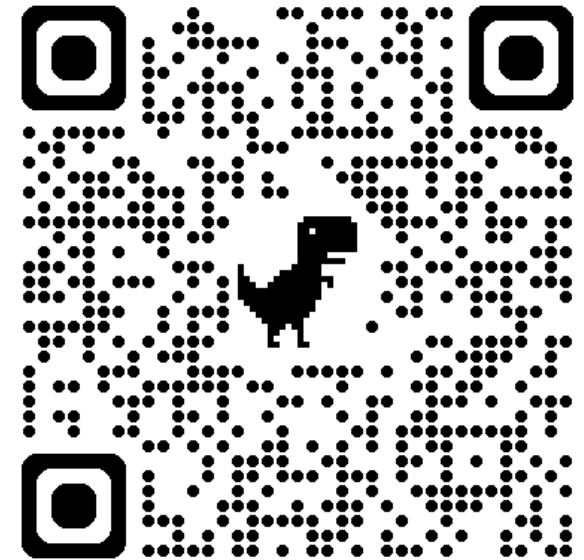
- N.C. Association of County Commissioners
- Office of State Budget & Management
- Department of Information Technology
- Department of Health and Human Services
- Department of Environmental Quality
- University of North Carolina System
- Department of the Secretary of State
- N.C. League of Municipalities
- Department of Administration
- Department of Commerce
- Department of Revenue
- Public Utilities Commission
- Department of Public Safety
- Department of Agriculture & Consumer Services
- City of Greenville
- Department of Environmental Quality
- Department of Transportation
- N.C. Community College System
- Department of Public Instruction



# Who We Are

---

We represent the North  
Carolina GIS Community



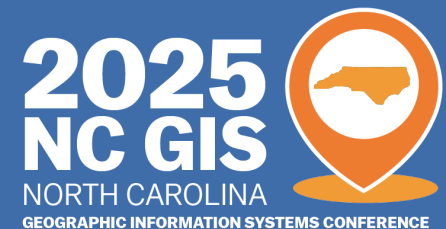
# GICC COMMITTEES



# MAINTENANCE IN THE CENSUS BUREAU'S GEOGRAPHIC SUPPORT PROGRAM



FEDERAL INTERAGENCY COMMITTEE  
(FIC)



# Who We Are & Our Objectives

---

## Any federal employee or contractor

1. Establish a forum for federal government GIS users and geospatial data producers in North Carolina to share knowledge and ideas about GIS policies, geospatial data, technology, applications, and related information.
2. Inform federal government users of geographic information about the status of GIS activities in the state and the actions of the Council.
3. Promote NSDI initiatives in North Carolina.



# What We Do

---

## **Federal geospatial program updates**

- ❑ Update state on grant opportunities
- ❑ Update on federal datasets updates within NC
- ❑ NSDI updates

## **Coordination for data and collaboration**

- ❑ Coordinated with NC to develop landcover
- ❑ Coordinated with Hydro Working Group to inform about updates to 3DHP program
- ❑ State/Federal coordination





# Plans and Goals

---



Expand Federal to State direct connections



Expand Federal to Local direct connections



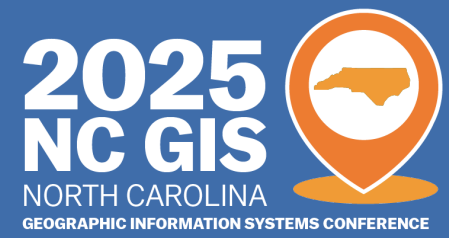
Continue updates on federal programs and grant opportunities



Continue existing coordination



# STATE GOVERNMENT GIS USERS COMMITTEE (SGUC)

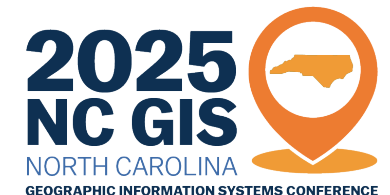


# Who We Are & Our Objectives

---

**Any state government employee**

1. Establish a forum for state government GIS users and geospatial data producers to share knowledge and ideas about GIS policies, geospatial data, technology, applications, and related information.
2. Inform state government users of geographic information about the status of GIS activities in the state and about the actions of the Council.
3. Identify, recommend, and communicate adequate planning, standards, and quality controls for the implementation and operations of GIS in state government agencies.
4. Assist the Council in coordinating the management, application, and sharing of GIS resources and services.
5. Promote training and the use of GIS services and resources in support of agency operations.



# What We Do



ESRI Enterprise Agreement – software



Workforce development- ESRI training



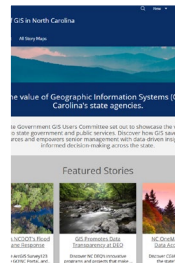
Best Practices – Authoritative Badging



Information Sharing – Technical presentations



GIS Support - ArcGIS Administrators



Promote GIS – Value of GIS StoryMap

# Plans and Goals

---

GIS Job  
Classification

Training/  
Knowledge  
Sharing

State/Local &  
State/Federal  
Collaboration

UAV/Drone  
Resources

ArcGIS Online  
Administration

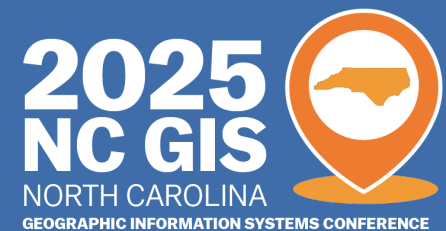
Enterprise  
Best Practices  
Sharing

Promote the  
Value of GIS





# LOCAL GOVERNMENT COMMITTEE (LGC)



# Who We Are & Our Objectives

---

## **Any municipal, county, or regional government employee**

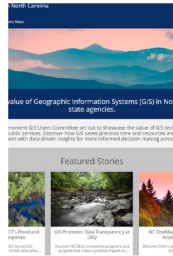
1. Establish a forum for organizations that represent local government GIS users and geospatial data producers in North Carolina to share knowledge and ideas about GIS policies, geospatial data, technology, applications, and related information.
2. Inform local government users of geographic information about the status of GIS activities in the state and the actions of the Council.



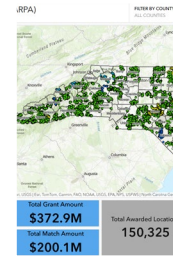
## **Executive Committee**

- Association of Regional Council Executive Directors
- Carolina Chapter of the Urban and Regional Information Systems Association (CURISA)
- NC Association of County Commissioners
- NC Chapter of the American Planning Association (APA-NC)
- NC League of Municipalities
- NC Local Government Information Systems Association (NCLGISA)
- NC Property Mappers Association (NCPMA)

# What We Do



How to promote the value of GIS



Technical sessions:  
Transition to Experience  
Builder Tips and Tricks



Applications of remote sensing in local government

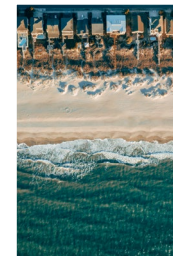
The image is a screenshot of a "Carolina Report Card" showing an overall grade of "A". It includes a table with the following data:

Category	Grade
Overall Grade	A
Grade A	A
Grade B	B
Grade C	C
Grade D	D
Grade E	E
Grade F	F
Grade G	G
Grade H	H
Grade I	I
Grade J	J
Grade K	K
Grade L	L
Grade M	M
Grade N	N
Grade O	O
Grade P	P
Grade Q	Q
Grade R	R
Grade S	S
Grade T	T
Grade U	U
Grade V	V
Grade W	W
Grade X	X
Grade Y	Y
Grade Z	Z

GICC updates and feedback



Local government solutions: Lead pipes, Utility Network



Community Resiliency

# Plans and Goals

---

Prepare for the 2026  
Datum Change

Website refresh

Deploy Contacts  
website

Identify opportunities  
for regional  
collaboration/assistance

Promote local data  
updates

Provide outreach to  
support GICC initiatives

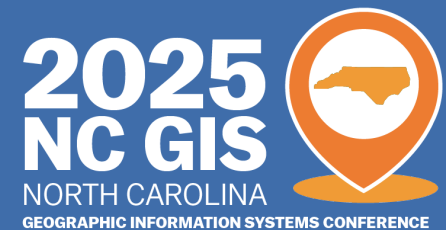
Blue Sky/Grey Sky  
disaster response  
resources

Promote the value of  
GIS and the profession





# STATEWIDE MAPPING ADVISORY COMMITTEE (SMAC)





# Who We Are & Our Objectives

---

## Objectives:

1. Consolidate information on SMAC work plan activities related to policy and procedures for geospatial data distribution, technical standards, funding, statewide geospatial data collection, and base and image mapping requirements for use by the Council for preparation of the annual report to the Governor and the Joint Legislative Commission on Governmental Operations.
2. Inform users of geographic information about the status of GIS activities in the state and the actions of the Council.
3. Promote and gain statewide support for funding cooperative programs among local, state, and federal governments, and other appropriate organizations.
4. Serve as a member of the Council through the SMAC chair and advise the Council on issues, problems, and opportunities relating to GIS in North Carolina.

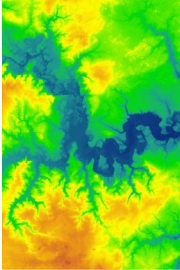
## Permanent Members:

- Director of the Department of Transportation/GIS Unit
- Director of CGIA
- State Photogrammetric Engineer
- State Geologist
- Chief of the State Geodetic Survey
- The US Geological Survey's state representative

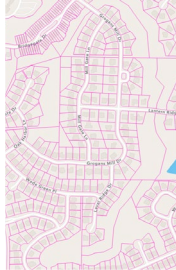
## Additional (non-permanent) members:

- Two representatives of the State Government GIS Users Committee
- Two representatives of the Local Government Committee
- One representative of the Federal Interagency Committee
- One representative to be named by the NC League of Municipalities
- One representative to be named by the NC Association of County Commissioners
- One representative of the university system
- One representative of the Department of Cultural Resources, Division of Archives and Records

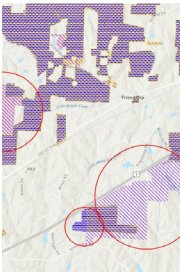
# What We Do



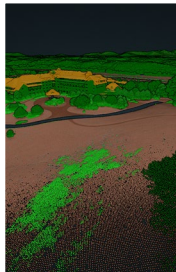
Support development of statewide hydrography with NCDEQ, NCDOT, stakeholders



Enhance statewide parcel data updates through more consistent field attribution



Provide an easier way for local gov't to submit municipal boundaries/annexations



(Accomplished) Prepare and adopt elevation business plan to update and maintain LiDAR data (adopted by GICC 11/13/24)

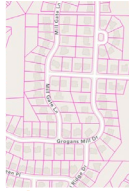


Recommend Landcover data update products and support funding partnerships



Develop Building Footprint Business Plan

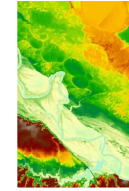
# Working Groups



Seamless Parcels



Orthos and  
Elevation



Hydrography



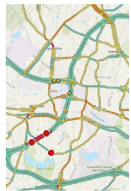
Building Footprints



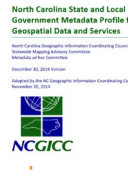
Municipal  
Boundaries



Addresses



Transportation



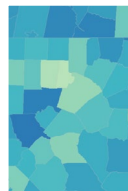
Metadata



Landcover



2022 Reference  
Frame



Census



Board on  
Geographic Names

# Plans and Goals

---

## FY2024-2025 SMAC Workplan

- Continue to support hydrography development
- Work with county tax administrators and CAMA vendors to directly populate statewide parcel attributes

## FY 2023-2025 GICC Goals and Priorities

- Continue to prioritize hydrography, administrative boundaries, elevation, building footprints
- Work with state agencies to make GICC priority data sets discoverable through NC OneMap
- Promote geospatial metadata through training resources and implementation



# TECHNICAL ADVISORY COMMITTEE (TAC)



# Who We Are & Our Objectives

---

## Objectives:

1. Review and recommend specifications for directing and coordinating the implementation and use of GIS from a statewide perspective. Relevant items for GISTAC research should include:
  - Standards and Guidelines – Detailed specifications to ensure interoperability of hardware, software, and databases, and to facilitate data exchange.
  - Implementation Strategies – Approaches or guidelines for developing, installing, and managing the components of the GIS infrastructure.
2. Provide technical advice, expertise, and leadership to the Council. Specific technical issues will be anticipated, reviewed, researched, and evaluated; and appropriate recommendations will be submitted to the Council for final approval.
3. The findings and recommendations of the GIS TAC shall complement and align, when practical, with the policies and standards of the National Spatial Data Infrastructure (NSDI).

## Members:

- A chair, appointed by the Chair of the Council
- One representative of the State Government GIS Users Committee (SGUC)
- One representative of the Local Government Committee (LGC)
- One representative of the Federal Interagency Committee (FIC)
- One additional representative from the GICC, One staff member of the Land Records Management Section of the Department of the Secretary of State,
- One staff member of CGIA

# What We Do

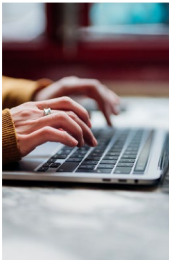
---



Provide technical advice to the GICC



Research and recommend best practices relating to GIS infrastructure and data.



Research and review of emerging technologies for GIS.



Research of how local municipalities and private entities share data.



Authoring of standards and guides for data, hardware, software, infrastructure, and databases.

# Plans and Goals

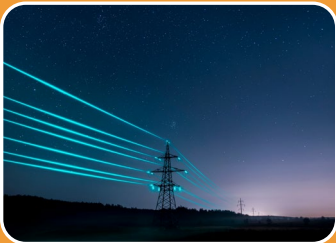
---



Best practices guide for big data



Education and investigate uses of AI and machine learning in GIS



Continue to monitor changes of utility or infrastructure mapping practices

# DISASTER RESPONSE DISCUSSION

---

**2025 NC GIS CONFERENCE** 

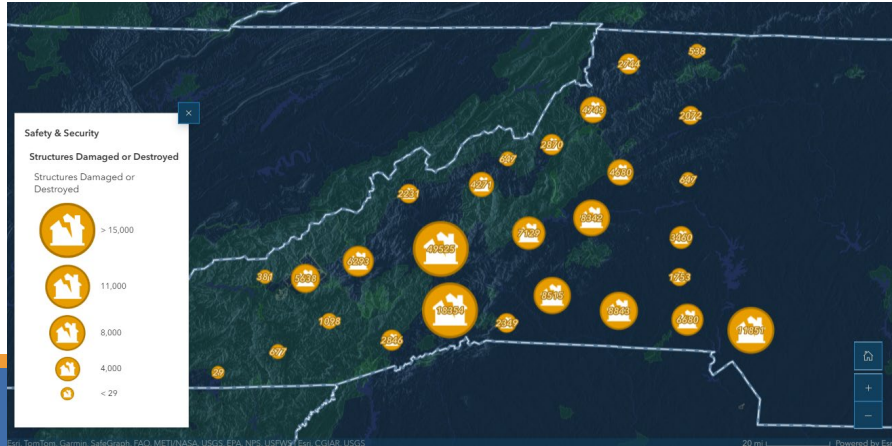
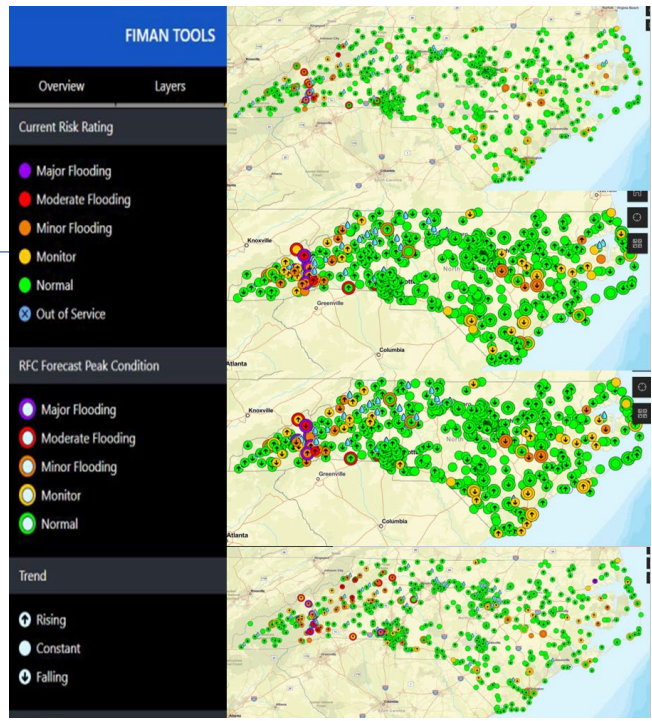
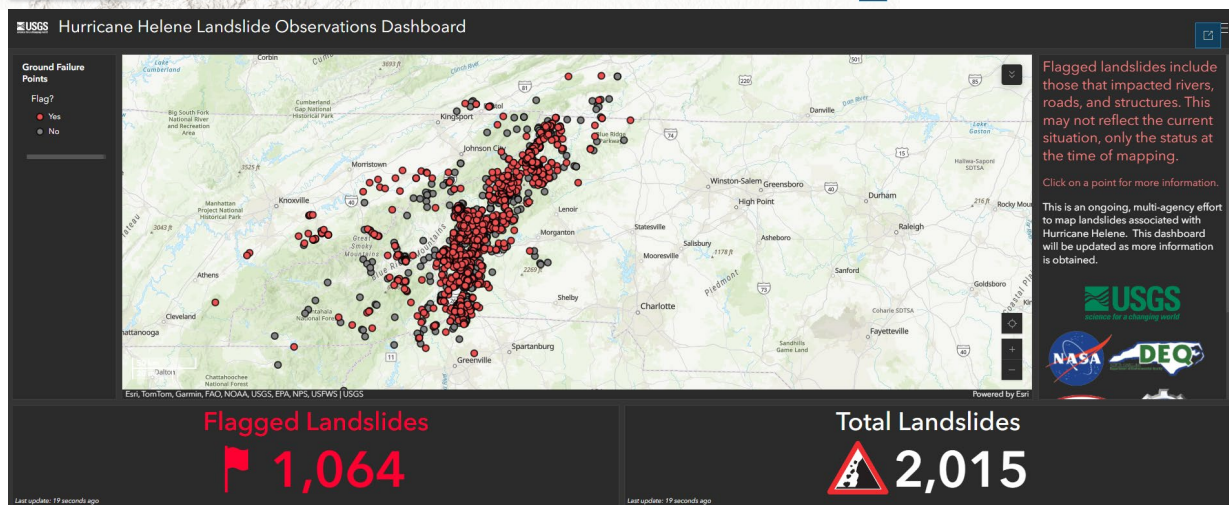
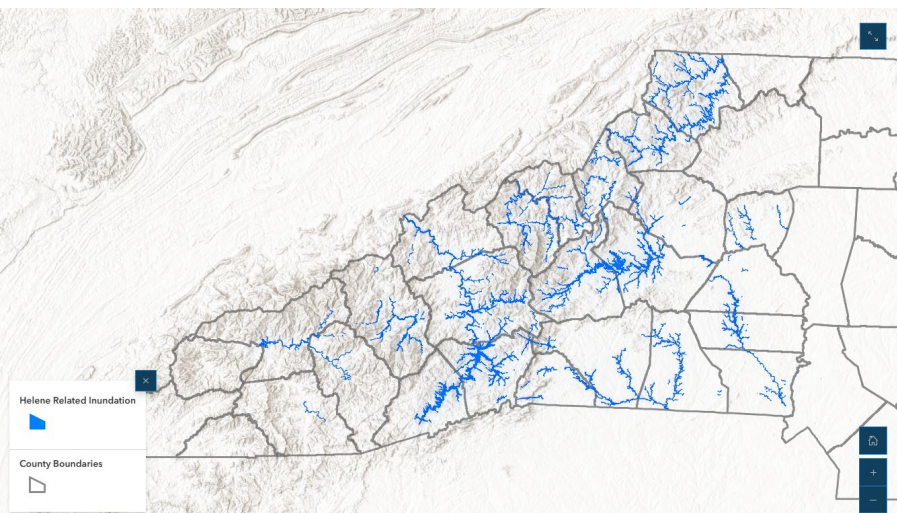


# Value of GIS in Disaster Response



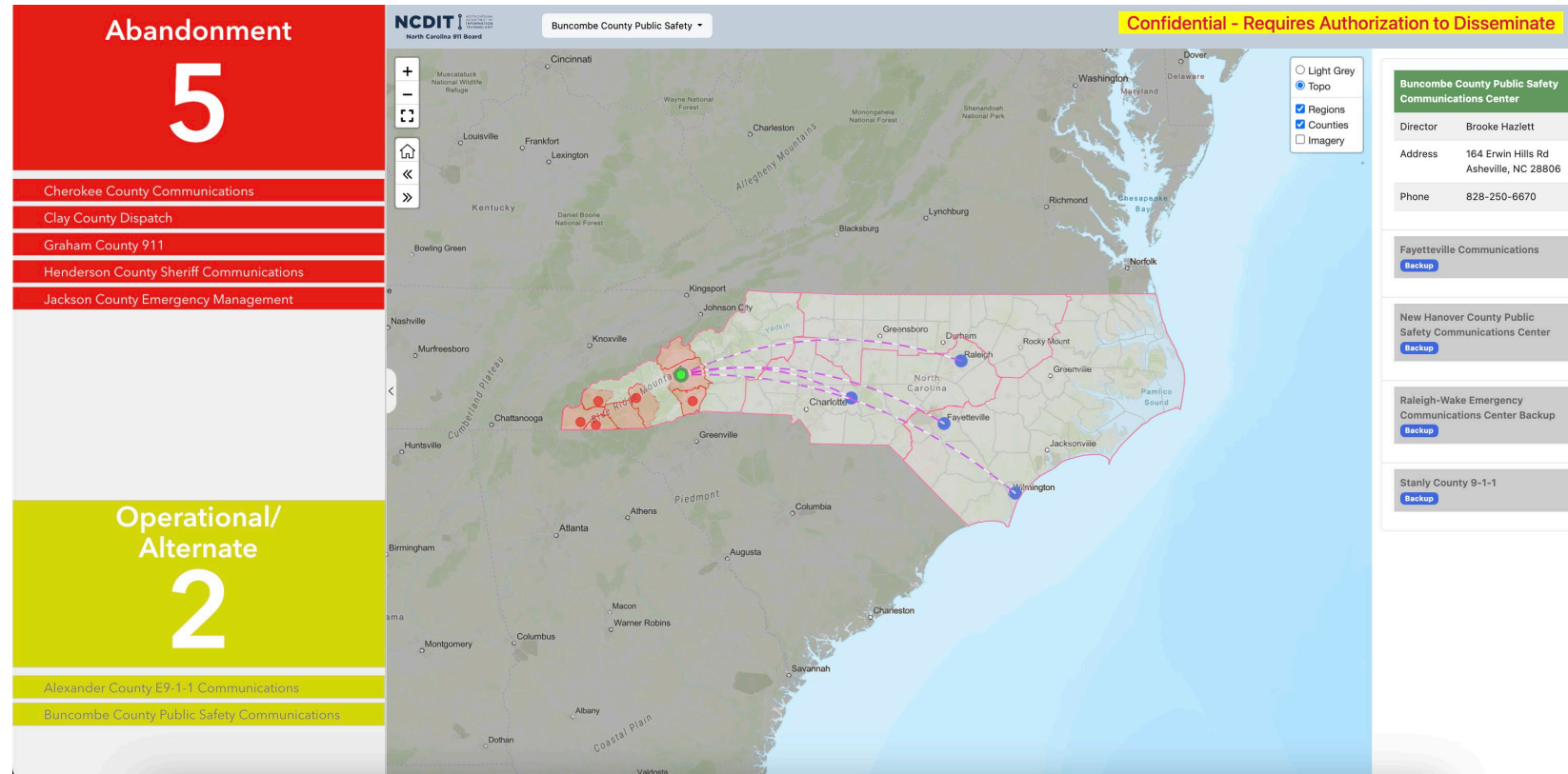


# During the Storm

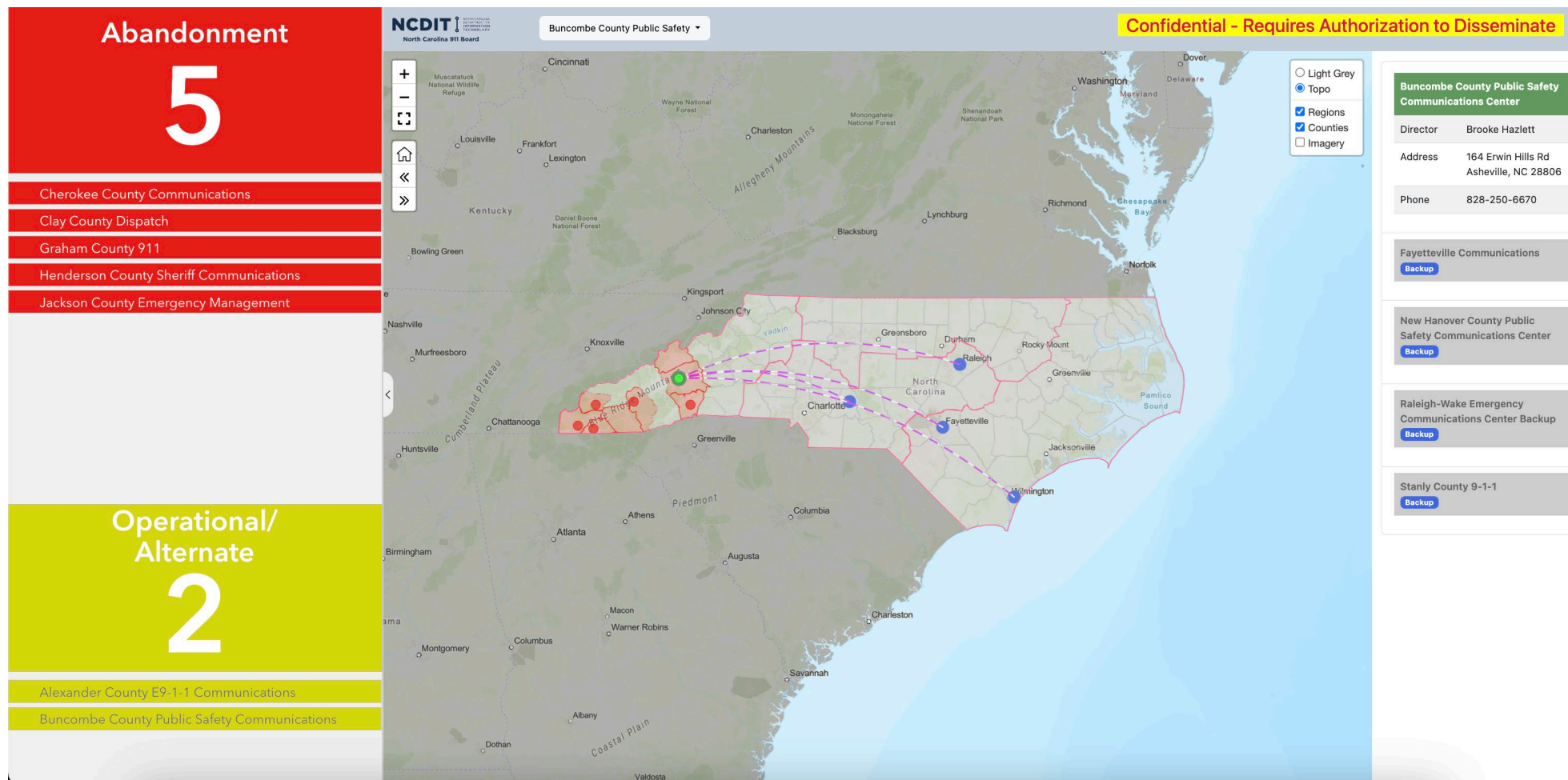




# Next Generation 911



# NG911 – Call Routing

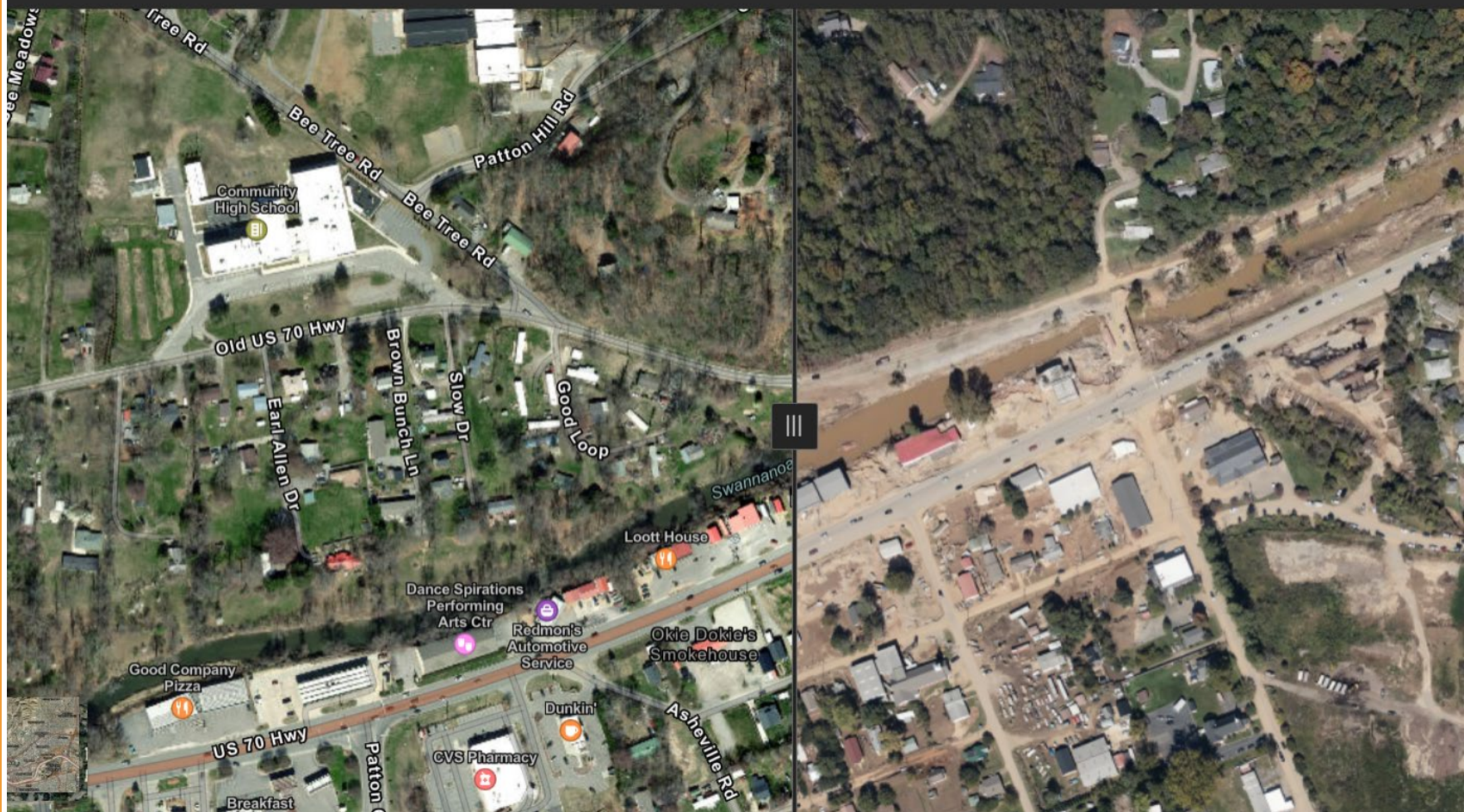




# Imagery: Local, State, and Federal Coordination

Gary, DOT (eric), how to get  
data

NOAA Hurricane Helene Before and After



# Imagery Coordination

- I. Sources (Terrestrial and Aerial) made available in DOT Imagery Map/Hub (In order of appearance)
  1. DOT/Consultant Personnel with Geotagged Phone Images
  2. Internet Scraped Imagery (Social Media/News)
  3. Ground Survey I23 Damage Assessments
  4. CAP DSLR Aerials
  5. NCDOT Drone Imagery
  6. CAP Orthoimagery
  7. NearMap Orthoimagery
  8. NCDOT Targeted Photogrammetry
  9. NOAA Orthoimagery
  10. Planet Satellite Imagery
  11. USGS Satellite Imagery/Landslide Data
  12. NCDOT County Wide Photogrammetry (With Swipe Tool)
  13. [All Imagery Map](#)
2. Frameworks Used for Coordination during Helene
  1. FEMA Daily Imagery Call
  2. DOT Daily STOC Coordination Calls
  3. DOT Bi-Weekly Coordination Calls
  4. WGEER Coordination Calls

# Opportunities for Access Improvement

---

1. Daily NC GIS Coordination Call (15-30 min) specific to data being added and made available
  1. Conducted after FEMA/DOT morning briefings
  2. What has recently been captured and what is coming and how to access along with intended use.
  3. Possibly a WGEER hosted updated list of these details
2. Imagery Hub with established management roles and responsibilities
  1. Goal is how to get folks easy access to imagery that has restrictions on it.
  2. Sharing Policies and Procedures need to be established in advance
    1. Group membership management protocol set up in advance
  3. Preconfigured Templates/Symbology for certain types of imagery
3. Preconfigured contracts or similar with Imagery Providers.
  1. FEMA/DOT had Nearmap access during Helene
  2. CGIA brokered access to Planet during Helene
  3. Future sources?
4. Tools to assist in filtering for Imagery by Time Slice (DOT has a prototype)
5. An agreed upon template for the kitchen sink imagery map if appropriate.



# Working Group for Enhanced Emergency Response

What is it? How to sign up? (Christian/Colleen)

Encourage to sign up for WebEOC

Opportunities for improvement. (Natalie)

What are the expectations, could you find it?  
Tagging for event.

Sallie to respond about being in another county  
(questions/improvement)



# WGEER History

---

Hurricane  
Florence

GICC  
creates  
WGEER

WGEER  
Resources  
Developed

Helene:  
First Large  
Scale Test

# What is WGEER?

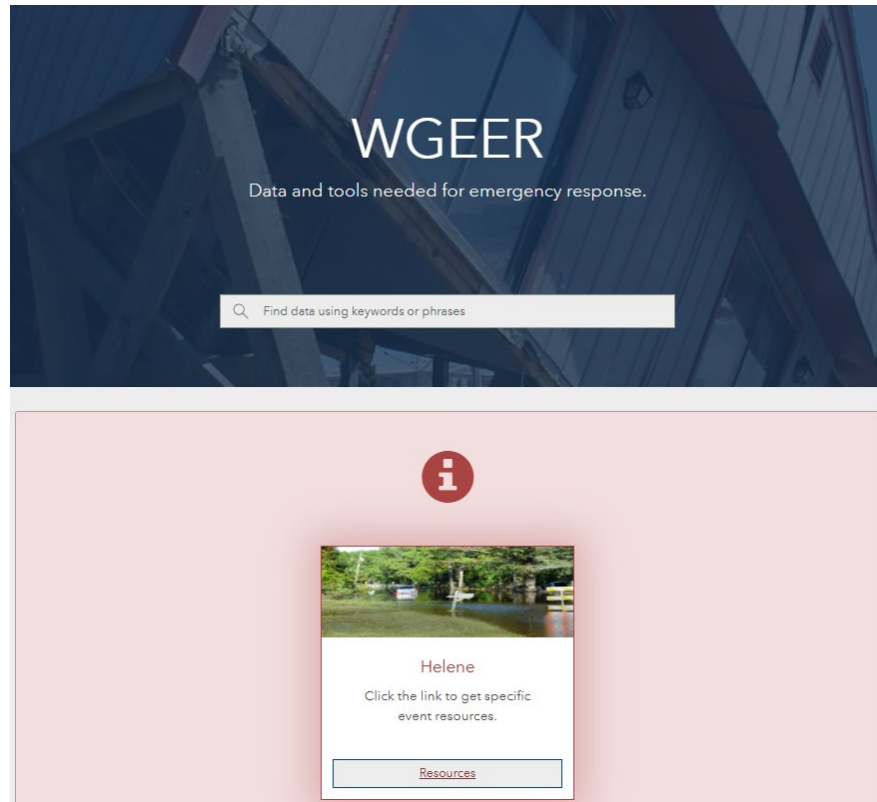




# WGEER Resources

---

## COMMUNICATE: HUB & TEAMS



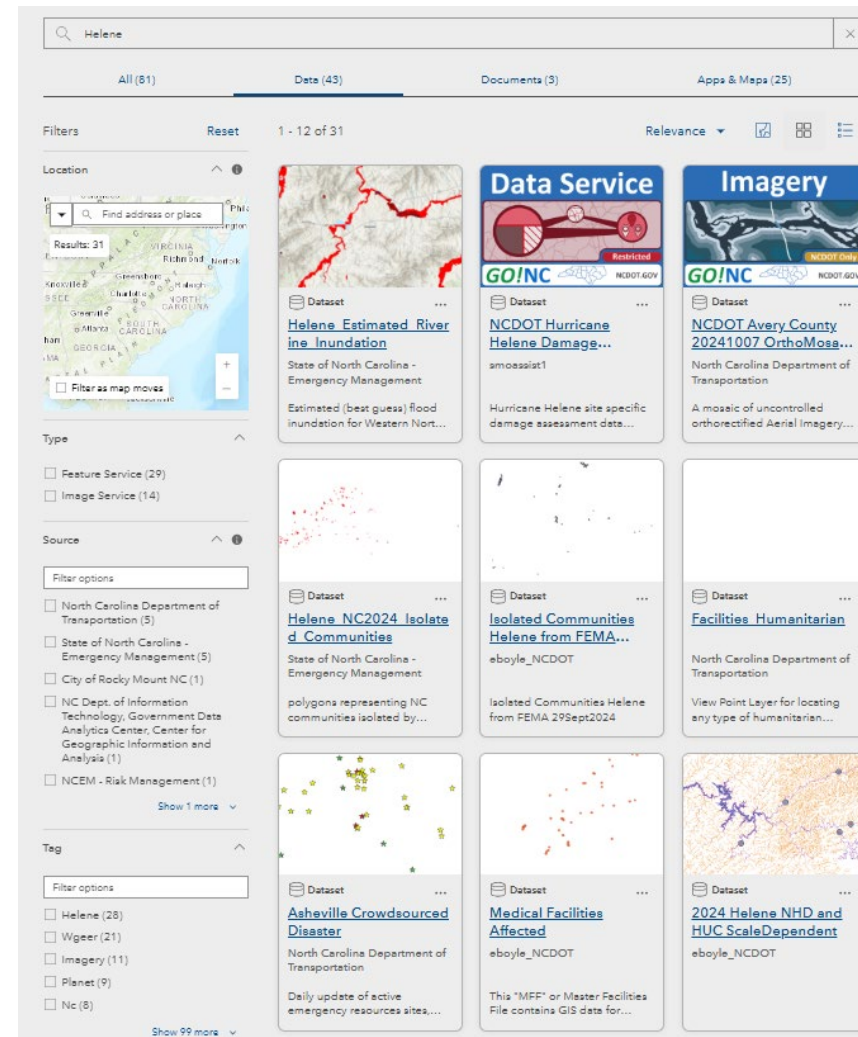
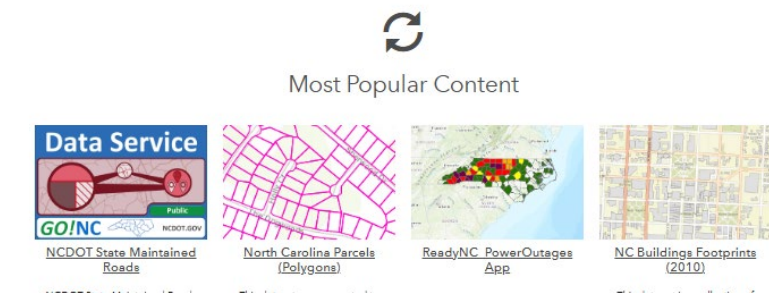
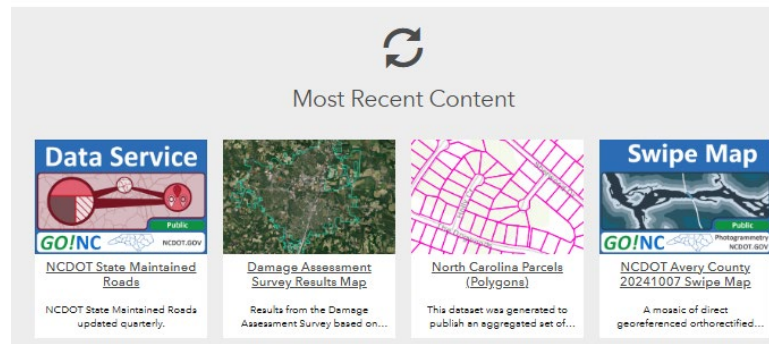
## WGEER VOLUNTEERS



# WGEER Hub: Helene Resources



Unique tag for this event: "Helene"  
Add the keyword above to the tag list for all event specific items added to ArcGIS Online.





# WGEER Volunteer Pathway

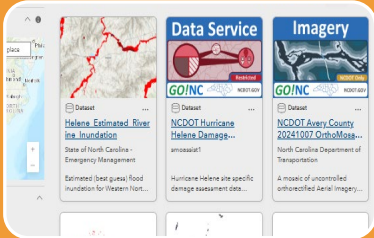
---



# WGEER during Helene



Group calls for data sharing and needs



Data sharing through Hub



Volunteer Deployments

# Opportunities for Improvement

---

More engagement  
through Teams

Earlier pre-event  
phone calls

Sign up for  
WebEOC

Easier data request  
process

Better  
understanding and  
preparation for  
data sharing

Community  
feedback for  
template maps and  
tools

Investigate options  
for federal/state  
hub sharing

Checklists and  
how-to documents

# NC OneMap



NC OneMap

DATA PROJECTS ▾

ANNOUNCEMENTS

TERMS

CONTACT US

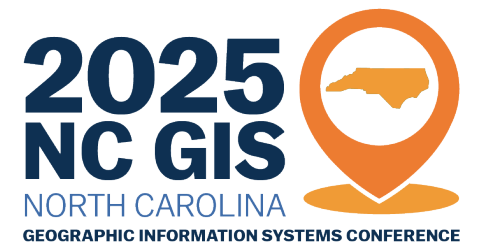
HELP ▾

ABOUT

# NC OneMap

Geographic Data Serving a Statewide Community

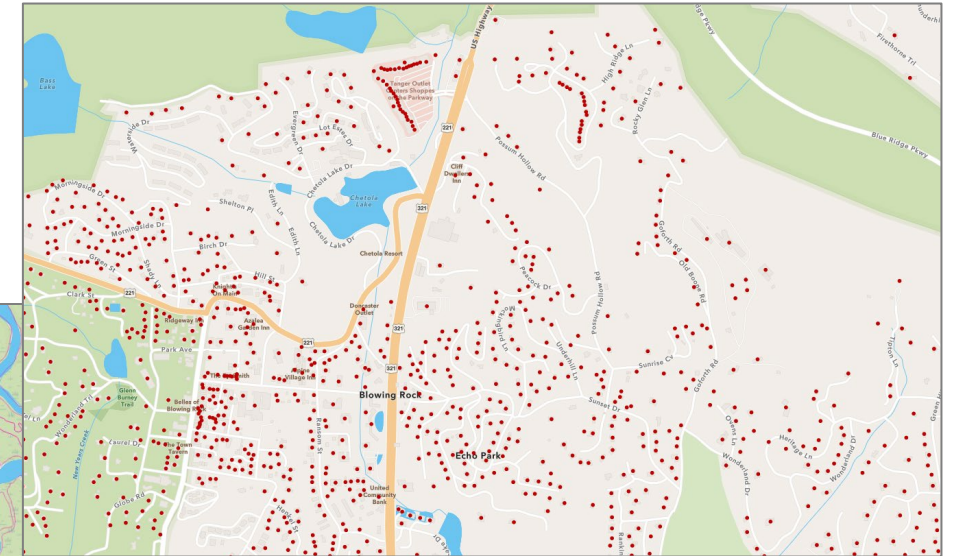
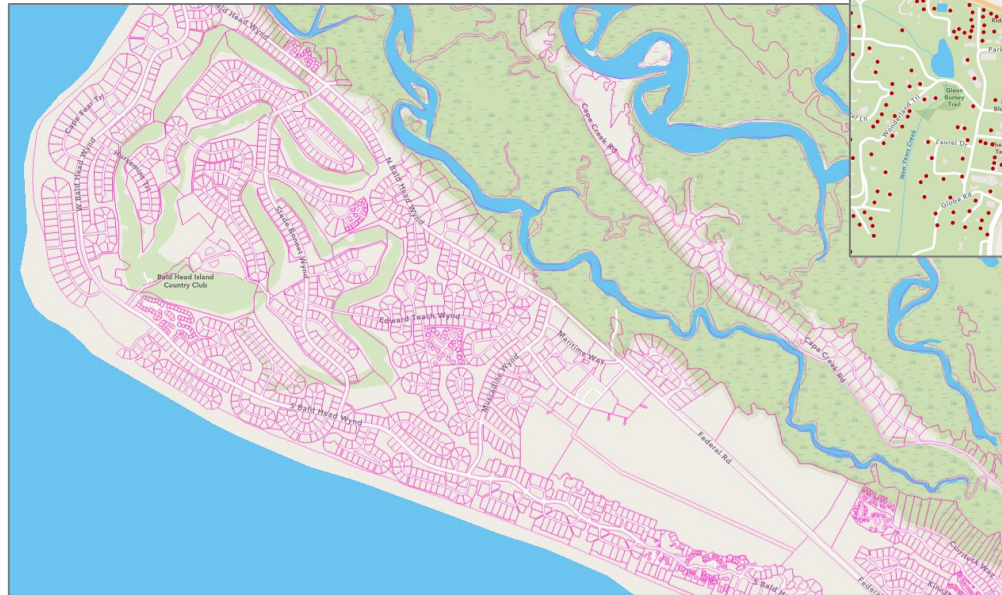
🔍 Find data using keywords like "imagery" or "environment"





# NC OneMap Response

- Monitor ArcGIS Enterprise to ensure continued availability of downloadable data and web services
- Act as a backup location for data in the event local government copy becomes unavailable
  - Parcels
  - Address Points







# ACCESSIBILITY PREPARATION

# What is web accessibility?

---

Web accessibility fulfills the basic promise of the web - making information and communication readily available to all people regardless of barriers in geography, language, or disability.

Integrating accessibility into websites brings broader benefits to organizations and other website visitors.



# Why does accessibility matter?

---

- ❑ Nearly 1 in 4 Americans have a disability.
- ❑ Enhanced accessibility features can improve site experience for all users.
- ❑ Section 508 of the 1973 Rehabilitation Act mandates that federal agencies ensure their technology products and services, like software, websites, intranet sites, and mobile applications, are accessible to people with disabilities.
- ❑ All US local and state governments must comply with WCAG 2.1 AA by April 2026 if the population is larger than 50,000 and 2027 if the population is less than 50,000 according to the Americans with Disabilities Act.

# Common Tools for Accessibility

---

Some common approaches for interacting with the Web include:


- ❑ **Assistive Technologies** – software and hardware that people with disabilities use to improve interaction with the web. These include screen readers that read aloud web pages for people who cannot read the text, screen magnifiers for people with some types of low vision, and speech recognition software and selection switches for people who cannot use a keyboard or mouse.
- ❑ **Adaptive Strategies** – techniques that people with disabilities use to improve interaction with the Web, such as increasing text size, reducing mouse speed, and turning on captions.




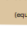



# Existing Resources


### How Can I Get Started?


 Discover quick ways to become more accessible today!  
View the NSGIC Accessibility Moments document

 Don't rely on color alone in your map  
Learn more about color from UMass

 Provide data in an alternative and accessible format  
Create an EDAP (equally effective alternative access plan)

 Make sure your map is keyboard accessible  
Try the eHoMouse challenge

 Provide a text alternative for the map  
Add alt text to images

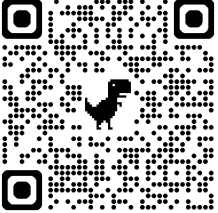
 Allow users to change the map's visual presentation to meet their preferences  
Explore enhanced contrast basemaps

Geospatial technologies have taken a large role in the constituent facing websites and applications that State and Local governments provide. Now more than ever before, geospatial solutions help constituents find data, apply for voter ballots, file tax documents, register for programs, find vaccines, and communicate service needs. With this growing reliance on a technology that has previously been designed for individuals without disabilities in mind (particularly those who are visual consumers), combined with new requirements for compliance with Title II of the Americans with Disabilities Act (ADA), State governments need to evaluate the compliance of their interfaces and find ways to build more inclusive designs that meet the growing needs of individuals with disabilities.

### Make Sure Your Content POURS

<b>Perceivable</b>	Users can recognize the presented information via sight, hearing, and/or touch
<b>Operable</b>	Users can navigate and operate the user interface via alternative input methods
<b>Understandable</b>	The navigation of content and the content itself is able to be understood by visitors
<b>Robust</b>	A wide variety of web browsers and assistive technologies can interpret the information

Interested in learning more? Let Working Group know by scanning the QR code below.



## Resources for Digital Accessibility in ArcGIS

196 0 02-05-2025 11:45 AM

by Jessica McCall Esri Contributor

Post Options

Digital accessibility in GIS is important to ensure that the data presented in maps and apps is accessible to everyone. By implementing digital accessibility across GIS content, technology barriers are reduced or eliminated for people with disabilities and information can be shared more effectively.

To support better digital accessibility in GIS, Esri provides several resources and recommends a selection of tools that can help to understand how to implement accessible content across ArcGIS.

### Esri Accessibility resources

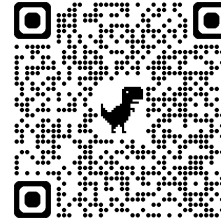
The Esri Accessibility team has worked hard to provide information and resources for our users. On these pages you will find articles, blogs, videos and links to helpful information about implementing accessibility in your work.

- [Esri Accessibility Resources](#)
- [Esri Legal Accessibility Conformance Reports](#)
- [Esri Community - Accessibility](#)

### Latest Blogs

These are some of the most recent blogs on accessibility f

- ["Enhancing the Human Geography Basemap"](#)





MINNESOTA  
IT SERVICES

Search

About MNIT For Government For Media Get Help

Home > About MNIT > Accessibility > Maps

About MNIT

Who We Are  
Strategic Plan  
Leadership  
Governance  
Budgets  
Accessibility  
Training  
Data Visualization  
Documents  
Maps  
News  
Quick Cards  
Implementation  
Meetings  
Multimedia  
Social Media  
Webinars and Applications  
Our Presentations  
Procurement  
Geospatial  
Security  
Transformation & Strategy Delivery

## Map Accessibility

Maps should be usable and understandable for everyone. When creating a map, you should consider different situations, such as color vision deficiency, visual impairment, cultural understanding, and your map.

Maps tell a story. They tell us where we are, where we've been, and where we are going. Proper design can make your story accessible to a wider audience.

### Learn About Accessible Maps

#### Map Design

Good design makes maps easier to understand with proper use of fonts, colors, symbols, and more. Find information on how to design maps that are accessible for everyone.

#### Static Digital Maps

Static digital maps are usually standalone graphics, such as JPGs or PDF files that are not interactive. Find information on how to create accessible static maps that everyone can read.

#### Interactive Web Maps

Interactive web maps allow you to interact with maps using a mouse, keyboard, voice, and more. Find information on how to make your maps accessible so everyone can interact with them.

Background

Color

Typography

Colorado GIS Accessibility Guidelines

Cartography

Navigate

Checklist

Alt Text

Zoom Tools

Static Maps

Tools

**2025**  
**NC GIS**  
NORTH CAROLINA  
GEOGRAPHIC INFORMATION SYSTEMS CONFERENCE



# Where do you go from here?

1. Learn the basics from the many existing resources
2. Raise awareness in your organization
3. Create a plan, checklists, or policy
4. Review your websites and assess
5. Prioritize updates
6. Track and communicate progress
7. Stay updated on changes



Search by

**Search**

☐ Owner Name

☐ Parcel ID (PIN)

☐ REID

☐ Address

☐ Block / Lot

## Tax Parcel Viewer

Forsyth County, NC

*Tax Parcel Viewer is designed to provide property tax information for real estate records.*

**Disclaimer: The data offered by this tool is provided without warranty. Users should consult public primary information sources for non-tax generated data, such as recorded deeds, zoning information, and plats, to verify the accuracy of the data provided.**

**Please direct all questions to Forsyth County Tax Administration  
336-703-2300**

For help using this application, click on the help link in the upper right corner.

OK

# DISCLAIMER UPDATE

# Disclaimer Law

---

## **REQUIRE DISCLAIMER ON LOCAL GOVERNMENT GEOGRAPHIC INFORMATION SYSTEM (GIS) TOOLS**

**SECTION 13.(a)** Article 23 of Chapter 153A of the General Statutes is amended by adding a new section to read:

**"§ 153A-463. Disclaimer required on geographic information system tools.**

*Any geographic information system (GIS) tool offered to the public by a county shall bear a disclaimer notifying the user that the data offered by the tool is provided without warranty and that the user should consult public primary information sources, such as recorded deeds and plats, to verify the accuracy of the data provided. The disclaimer shall be displayed prominently on a splash screen or interstitial webpage that the user must affirmatively acknowledge before accessing the tool."*

**SECTION 13.(b)** Article 21 of Chapter 160A of the General Statutes is amended by adding a new section to read:

**"§ 160A-499.8. Disclaimer required on geographic information system tools.**

*Any geographic information system (GIS) tool offered to the public by a city shall bear a disclaimer as provided in G.S. 153A-463."*

**SECTION 13.(c)** This section becomes effective January 1, 2025



# Status

---

- ❑ We've been informed that no legislative action will be taken prior to the bill implementation deadline but expect to work with the sponsor in the 2025 legislative session.
- ❑ General Recommendations:
  - ❑ Prioritize disclaimers on GIS tools that contain land records such as parcels.
  - ❑ Have your disclaimer reviewed by legal counsel. Refer to existing disclaimers if you need to get started.



# Website Recommendations

Add GIS tool disclaimers to the best of your ability to demonstrate intent to comply using the following options:

1. Place splash screen disclaimers on GIS tools that are easily remedied (such as Experience Builder)
2. When a splash screen is not supported by your application, add a GIS disclaimer on your open data site.
3. Add a blanket spatial data disclaimer language to your overall government website disclaimer language.

