

The Road Ahead: Updates to GICC Priority Framework Datasets

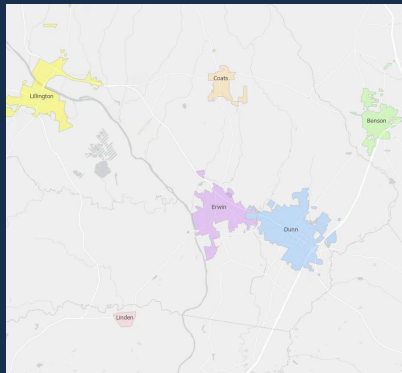
Colleen Kiley

GIS Coordination Program Manager

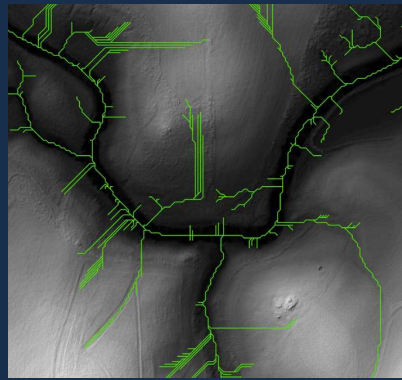
Center for Geographic Information and Analysis

NCDIT  NORTH CAROLINA
DEPARTMENT OF
INFORMATION
TECHNOLOGY

The Road Ahead: GICC Priority Datasets



Municipal Boundaries



Hydrography



AddressNC



Building Footprints



Building Footprints

Building Footprints : GICC Priority and Benefits

Stakeholders

- ❖ Emergency Management
 - ❖ N.C. Floodplain Mapping Program
 - ❖ Office of Recovery and Resiliency
- ❖ Board of Elections
- ❖ Broadband Office
- ❖ Department of Transportation
- ❖ Municipal Governments
- ❖ County Governments

Benefits

- ❖ More accurate risk assessment
- ❖ Enhanced emergency response
- ❖ Recovery assistance and resiliency planning
- ❖ Broadband expansion
- ❖ Election confidence and voter information
- ❖ Tax assessment
- ❖ Census accuracy
- ❖ Community planning/economic development

Building Footprints: History

2009

NCEM maps
building
footprints

Conflation:
property
records/
HAZUS

First Floor
Elevations

Data released
on Spatial
Data
Download

Geometry
Updates
using LiDAR
/Microsoft
buildings

State Agency
Needs
Assessment
indicates
wide use and
need for
update

Call for
Building
Footprint
Working
Group

2021

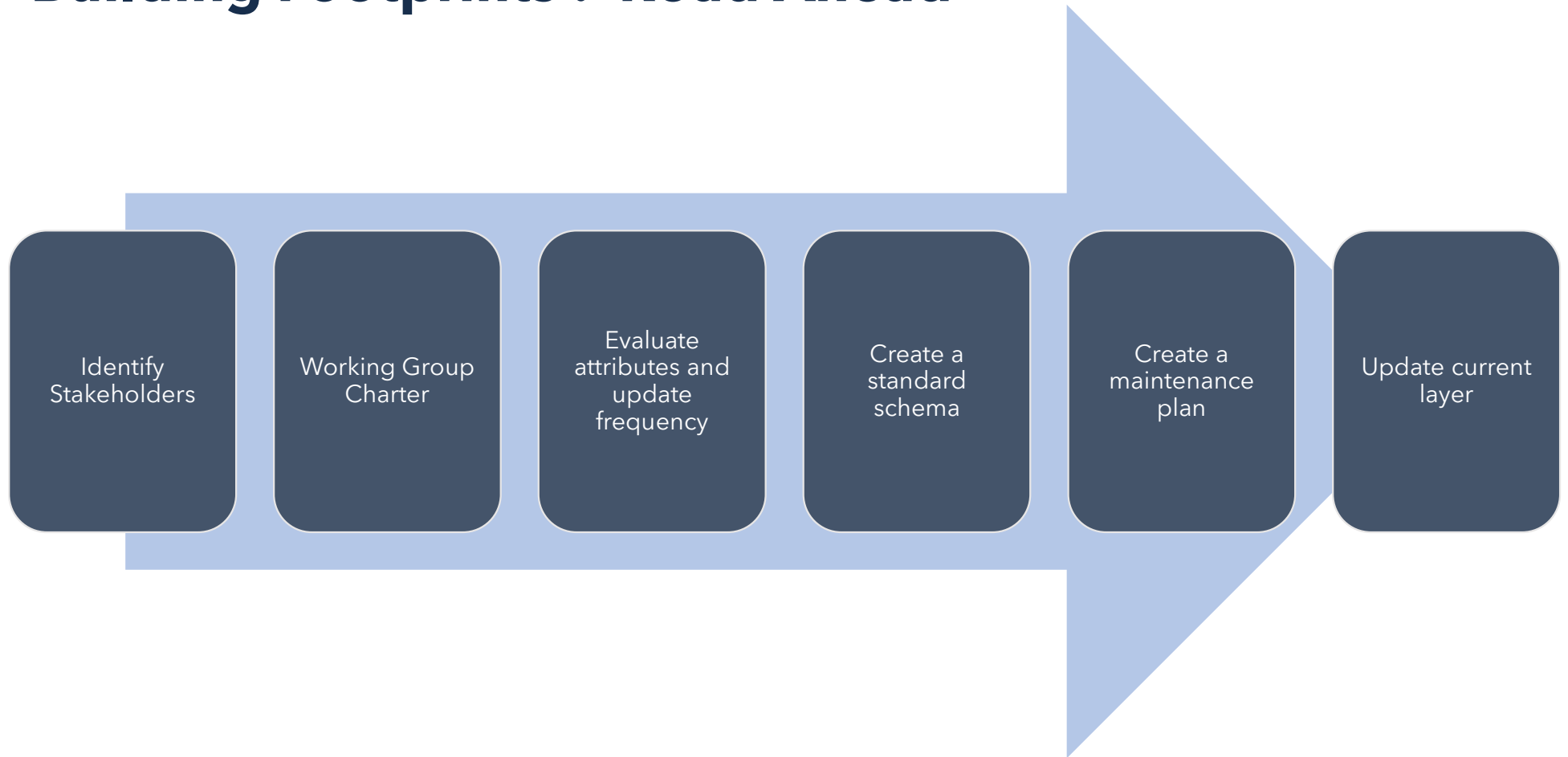
Building Footprints : Current Status



Buildings: Composite

- Microsoft_building_footprints
- QL1/QL2 LiDAR
- RISK
- SRMP

Building Footprints : Road Ahead



Building Footprints : Opportunities for Collaboration

Contact us!

- ❖ Become part of the working group.
- ❖ Tell us what you need in a building footprint layer.
- ❖ Help QC the layer.
- ❖ Tell us what analysis or applications you would like created.

CGIA Staff: Colleen Kiley (Colleen.Kiley@nc.gov)

David Giordano (David.Giordano@nc.gov)

An aerial photograph showing a dense network of winding rivers and streams flowing through a lush green forest. The water bodies are a mix of light blue and dark blue, creating a complex, interconnected pattern across the landscape. The surrounding forest is a vibrant green, with some areas appearing darker, possibly due to shadows or different tree species.

Hydrography

Hydrography : GICC Priority and Benefits

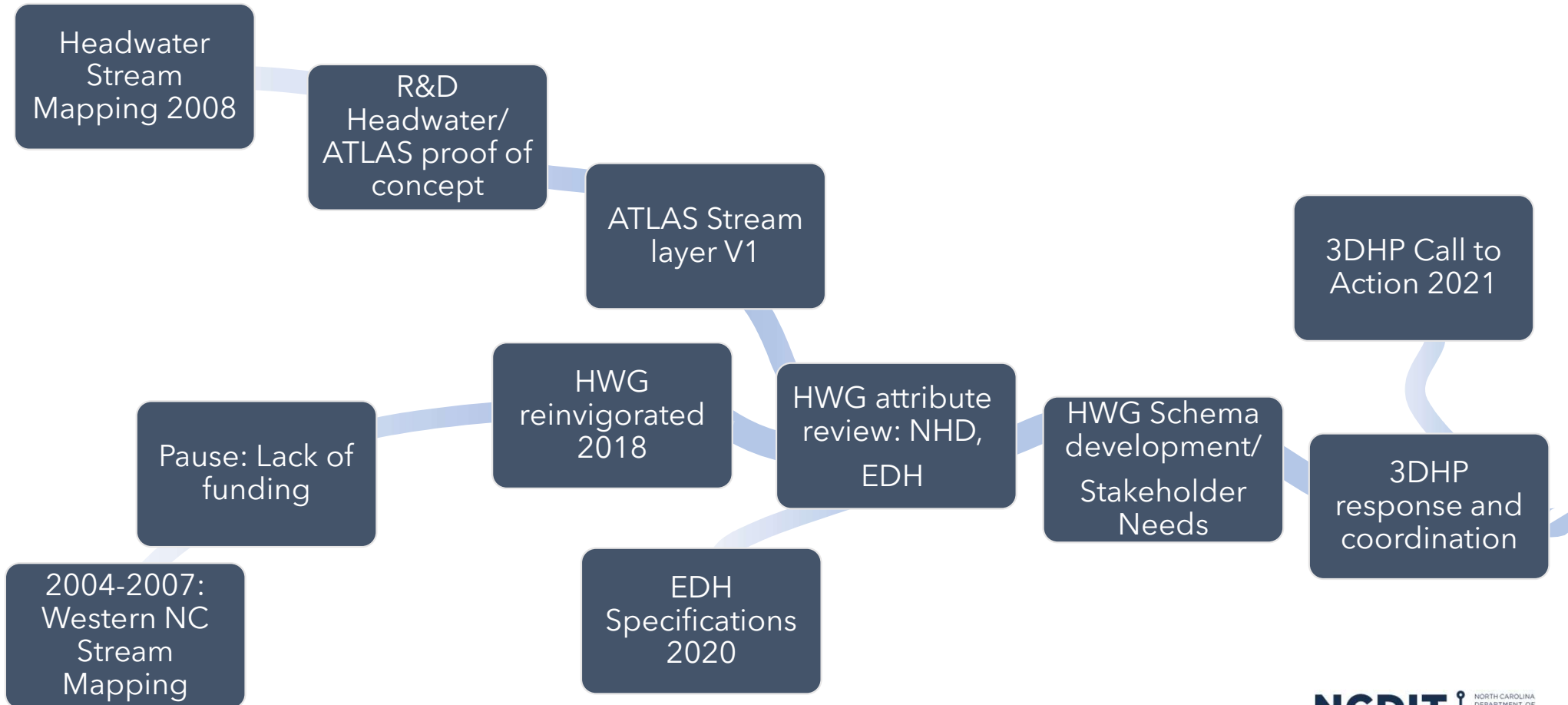
Stakeholders

- ❖ Department of Environmental Quality
- ❖ Department of Transportation
- ❖ U.S. Geologic Survey
- ❖ N.C. Floodplain Mapping Program
- ❖ Wildlife Resources Commission
- ❖ Municipal Governments
- ❖ County Governments

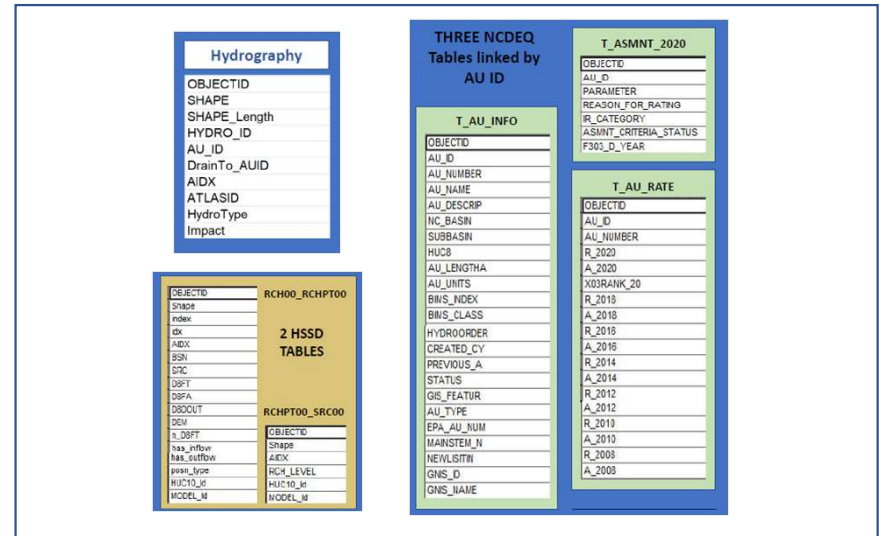
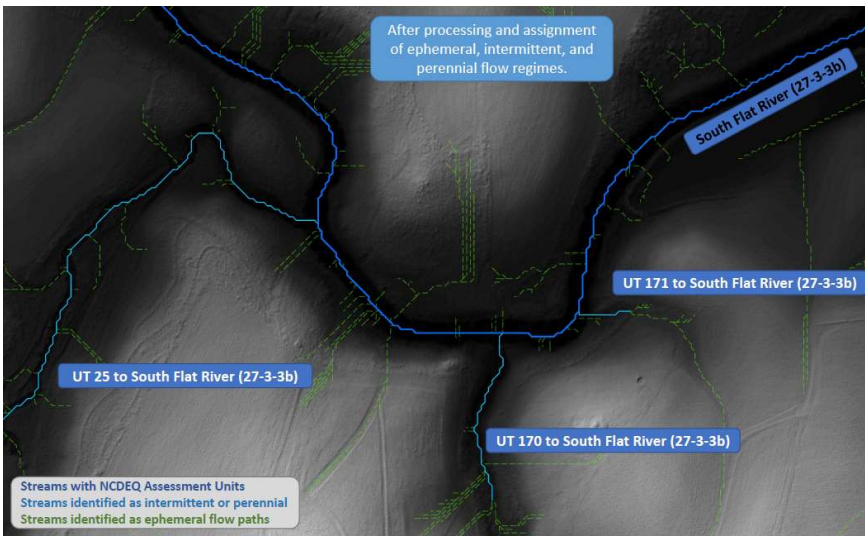
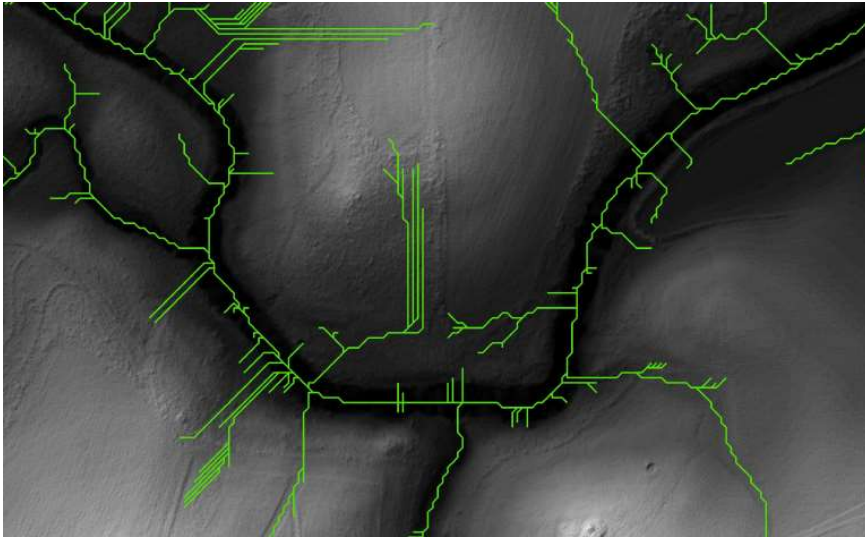
Benefits

- ❖ More accurate hydrography layer
- ❖ State and federal data integration: One layer for all
- ❖ New capabilities: network tracing, elevation, modelling
- ❖ Governance/Stewardship
- ❖ Transportation planning
- ❖ Environmental protection
- ❖ Risk reduction

Hydrography: History



Hydrography : Current Status



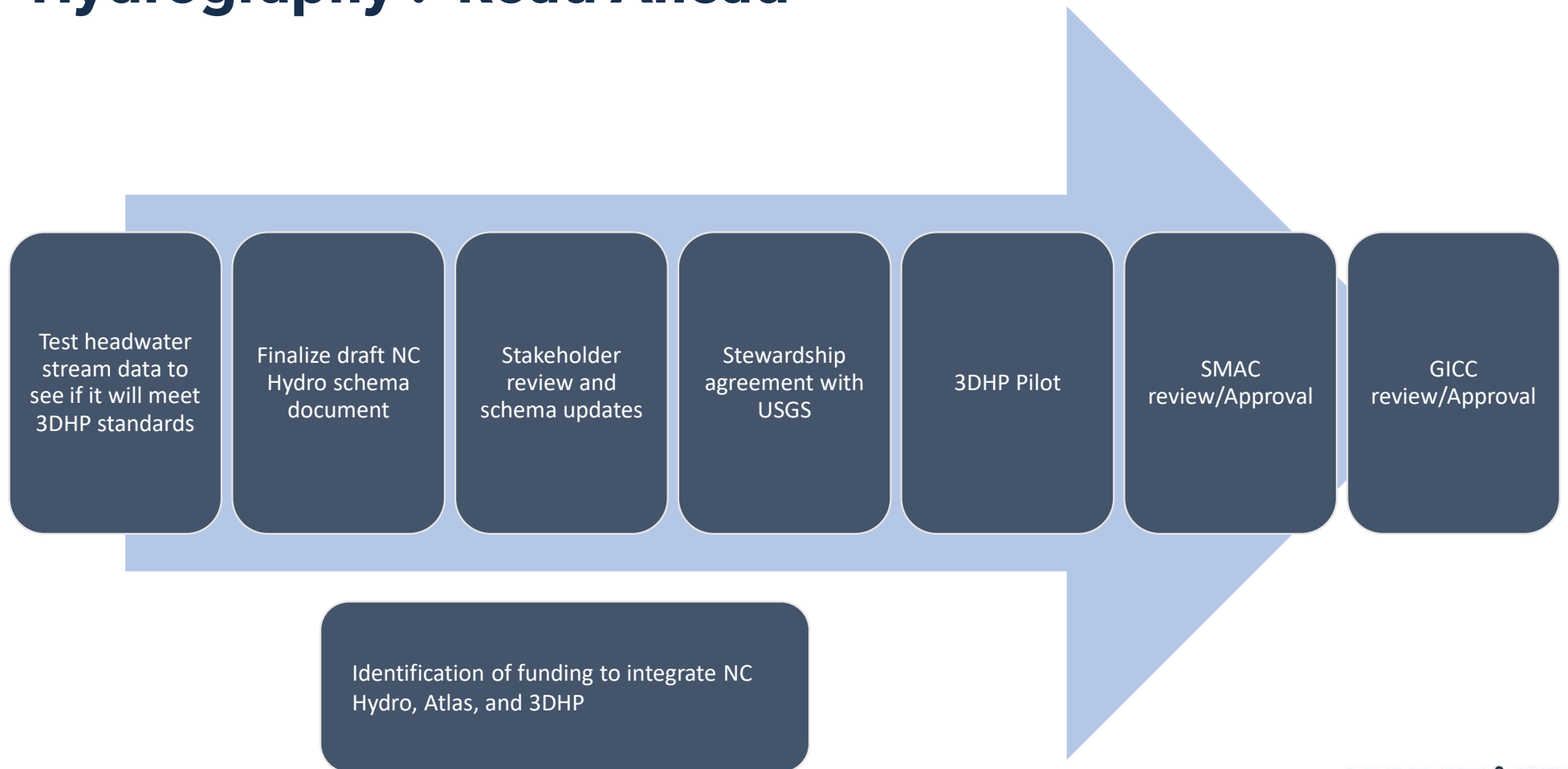
DRAFT

The 3D National Topography Model Call for Action Part 1: 3D Hydrography Program

Review Version 7.0

7/22/2021

Hydrography : Road Ahead



Hydrography : Opportunities for Collaboration

Contact us!

- ❖ Review/Comment on proposed schema.
- ❖ Talk to us about stormwater or other networking needs.
- ❖ Respond to the [3DHP call to action](#) through the HWG
- ❖ Help the Headwater Stream Mapping team edit the network
- ❖ Help QC the layer.

HWG Chair: Cam McNutt (Cam.Mcnutt@ncdenr.gov)

CGIA Staff: John Derry (John.Derry@nc.gov)

Colleen Kiley, GISP, CFM
GIS Coordination Program Manager
Center for Geographic Information and Analysis
Colleen.Kiley@nc.gov



Connect with us:

[Facebook](#)

[Twitter](#)

[LinkedIn](#)