

Project Overview

The N.C. Department of Information Technology is updating the N.C. Identity Management (NCID) service through the Citizen Identity Project. This involves enhancing security, improving self-service and moving external user identities from the department's on-prem infrastructure to a modern cloud-based service. Additional details and timeline information can be found at: <https://it.nc.gov/support/ncid/ncid-citizen-identity-project>

Shared LDAP Integration Overview

Currently NCID eDirectory synchronizes both internal and external users to the Shared LDAP in real-time. When a user accesses an application, the application performs authentication and authorization against the Shared LDAP. At cutover, NCID will no longer sync external users to the Shared LDAP. Instead, Simeio Ping Directory will sync external users to the Shared LDAP. This eliminates any impact on the applications for the near term.

Important Notice

Shared LDAP Integration method with NCID will be deprecated on 12/31/2023. Applications will need to use alternate NCID integration methods to move away from the Shared LDAP integration before this date.

Definitions

- **Cutover:** At this point in time, all External identities would be migrated from NCID eDirectory to Simeio-Ping Directory in Production
- **External user identities:** Individual user accounts and Business user accounts
- **Internal user identities:** State employee user accounts and Local Govt employee user accounts
- **NCID eDirectory:** It is a repository that currently stores internal and external user identities. After successful migration to Simeio, NCID eDirectory will act as the source of truth for all identity attributes associated with the internal user's profile.
- **NetIQ AM:** NetIQ Access Manager.
- **Ping Directory:** It is an LDAP repository that stores the external identities (Individual user accounts and Business user accounts). It will act as the source of truth for all identity attributes associated with the external user's profile.
- **Data Sync:** This Server is a data synchronization server that is used to synchronize external users' data in real-time from Simeio Ping Directory to the Shared LDAP.

Application User Impact after Cutover

- 1) For New User Registration for NCID Account and for Self-Service options (Forgot Username, Forgot Password, Unlock Account)
 - External Users (Individual Users and Business Users): They would go to <https://myncid.nc.gov>.
 - Internal Users (State Employee Users and Local Govt Employee Users): No change. They would continue to go to <https://ncid.nc.gov>.
- 2) Application access flow: No change.

Application Admin Impact after Cutover

- 1) Role Assignment:
 - To manually assign a role to External users (Individual Users and Business Users): They would go to <https://myncid.nc.gov>.
 - To manually assign a role to Internal Users (State Employee Users and Local Govt Employee Users): No change. They would continue to go to <https://ncid.nc.gov>.
 - To programmatically assign a role to External or Internal users through Web Service Integration: No change.

NCID CITIZEN IDENTITY PROJECT – SHARED LDAP INTEGRATION

2) App Membership Report:

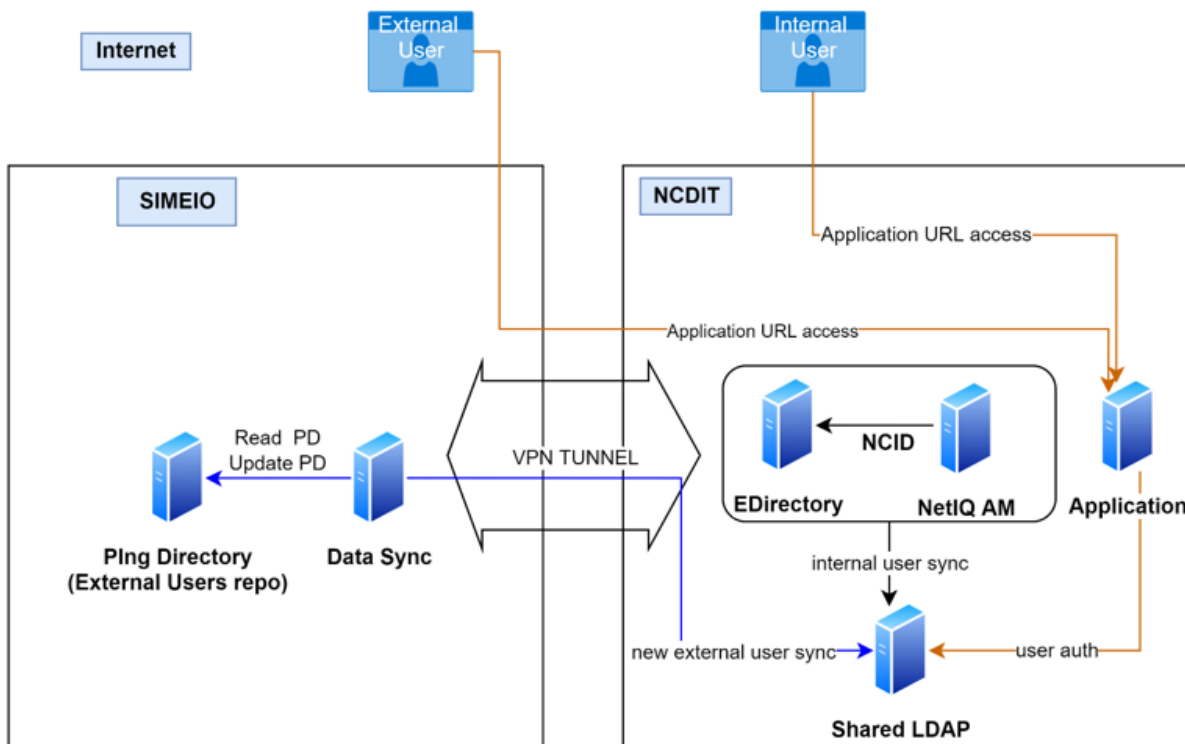
- To view the report for External users (Individual Users and Business Users): They would go to <https://myncid.nc.gov>
- To view the report for Internal Users (State Employee Users and Local Govt Employee Users): No change. They would continue to go to <https://ncid.nc.gov>.

Preparing for Cutover

- **NCID Team** will continue to synchronize Internal user accounts from NCID eDirectory to the Shared LDAP.
- **Simeio Team** to synchronize external user accounts from Simeio Ping Directory to the Shared LDAP.

At Cutover

- **NCID Team** will update the sync drivers to exclude external users from synchronization to the Shared LDAP.
- **Simeio Team** to synchronize external user accounts from Simeio Ping Directory to the Shared LDAP.
- **Application team** will ensure right after cutover:
 - An existing external user (whose account was migrated from NCID to Simeio) can successfully access their application.
 - A new external user (who registered their NCID account in Simeio after cutover and was provided appropriate access to the application by the application admin) can successfully access their application.
- The **Application** is still with NCID at cutover.



Shared LDAP Based applications

Preparing to Migrate applications to Simeio

- **Application Team** will need to use alternate integration methods to move away from the Shared LDAP integration, since the Shared LDAP integration will be deprecated on 12/31/2023.