

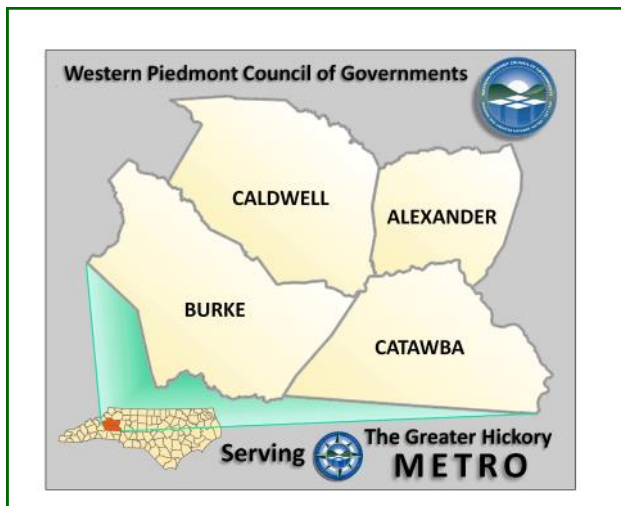


gis

Exploring the importance of state-wide datasets...

Statewide Datasets Valuable to Western Piedmont COG

Since 1998, staff at the Western Piedmont Council of Governments in Hickory NC have intermittently used statewide GIS data layers in producing quarterly Economic Indicators Newsletters (EIN) for the Hickory Metro area. Some of the statewide maps generated include Census population trends, commuting patterns, employment and retail sales. The EIN is distributed to local government elected officials, nonprofits, and the business community.



Western Piedmont COG serves the counties of Alexander, Burke, Caldwell, and Catawba.

From 2004 through 2011, GIS Professionals at the Western Piedmont Council of Governments in Hickory, NC, accessed statewide GIS data to locate streambeds and waterways. Using these data, WPCOG personnel mapped stormwater runoff for the entire cities of

Hickory, Morganton and Lenoir. GIS professionals actually walked or boated down the center of waterways in each municipality in order to discover and record both legal and illicit stormwater discharges into streams or rivers. The results of this project are now available assist planners and other municipal officials in managing water runoff and preventing pollution into municipal waterways.

For more details on this or any Western Piedmont COG project, please feel free to contact Data Services/GIS Manager Scott Miller at 828-485-4235 or scott.miller@wpcog.org.

High Country COG Depends on Statewide Datasets

The High Country Council of Governments (HCCOG) constantly and consistently utilizes statewide GIS data pertinent to the development of various regional planning efforts. The HCCOG serves as the lead planning agency for the High Country Rural Planning Organization (RPO). Comprehensive transportation planning across the seven county region depends on the valuable information obtained from statewide transportation datasets. Recently, the HCCOG has embarked on the High Country Regional Bike Plan. State transportation datasets were instrumental in developing bike facility improvement recommendations for road segments.

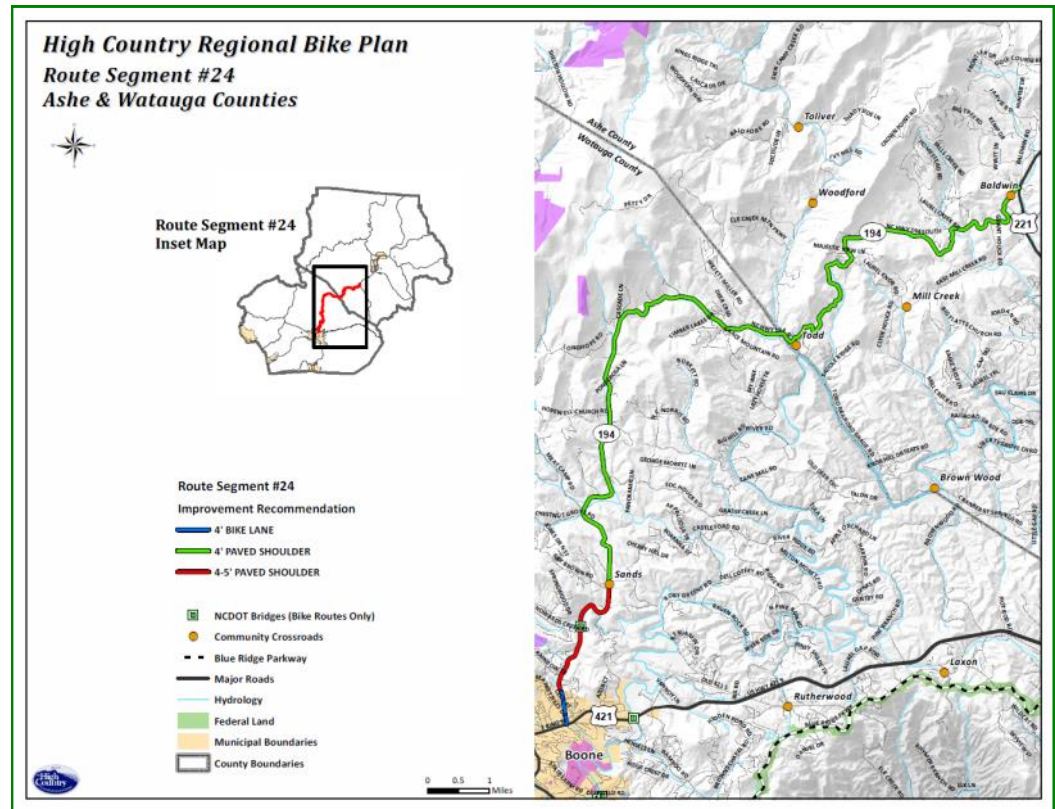
The HCCOG has completed numerous environmental

(Continued on page 2)

projects at a regional scale. In 2010, HCCOG, Centralina COG and Piedmont Triad COG collaborated to complete a GIS-based watershed assessment of North Carolina's portion of the Yadkin-Pee Dee River Basin for conservation potential and stress vulnerability. The prioritization assessment of the watersheds depended heavily on the accessibility of statewide datasets pertaining to hydrology, conservation land, floodplain, topography, transportation networks, utility infrastructure, significant natural heritage areas and agriculture.

Value

- ⇒ Provides consistent datasets across political boundaries
- ⇒ Reduces costs of providing data to local governments & to the public
- ⇒ Encourages regional GIS projects and planning efforts



High Country COG serves the counties of Alleghany, Ashe, Avery, Mitchell, Watauga, Wilkes, and Yancey, and the nineteen municipalities within these counties.

In 2011, the HCCOG completed a High Country Water Quality Initiative for the region. The projects consisted of a series of tasks designed to advance water quality protection in the High Country region. Statewide hydrology, transportation, public lands, aerial orthophotography and topographic data were essential in selecting stormwater BMP sites, depicting drainage flow and devising a BMP site plan.

For more details on this or any High Country COG project, please feel free to contact GIS Planner Jessica Brannock at 828-265-5434 or jbrannock@regiond.org.

Do you have a story to tell? Contact Kathryn Clifton, GISP so that your story may be included in the next edition exploring the importance of statewide datasets. Email your story to katclif@salisburync.gov

The breadth of use of GIS throughout the state continues to grow!