



Security:

A Driving Force Behind Moving to the Cloud

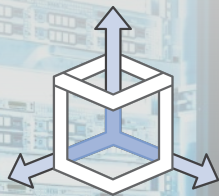
Michael South
Americas Regional Leader,
Public Sector Security & Compliance



Why is security traditionally so hard?



**Lack of
Visibility**



**Lack of
Resiliency**



**Defense-in-Depth
Challenges**



**Low degree
of Automation**

Financial Industry Regulatory Authority

“We determined that security in AWS is superior to our on-premises data center across several dimensions, including patching, encryption, auditing and logging, entitlements, and compliance.”

- John Brady, CISO FINRA



Looks for fraud, abuse, and insider trading over nearly 6 billion shares traded in U.S. equities markets every day



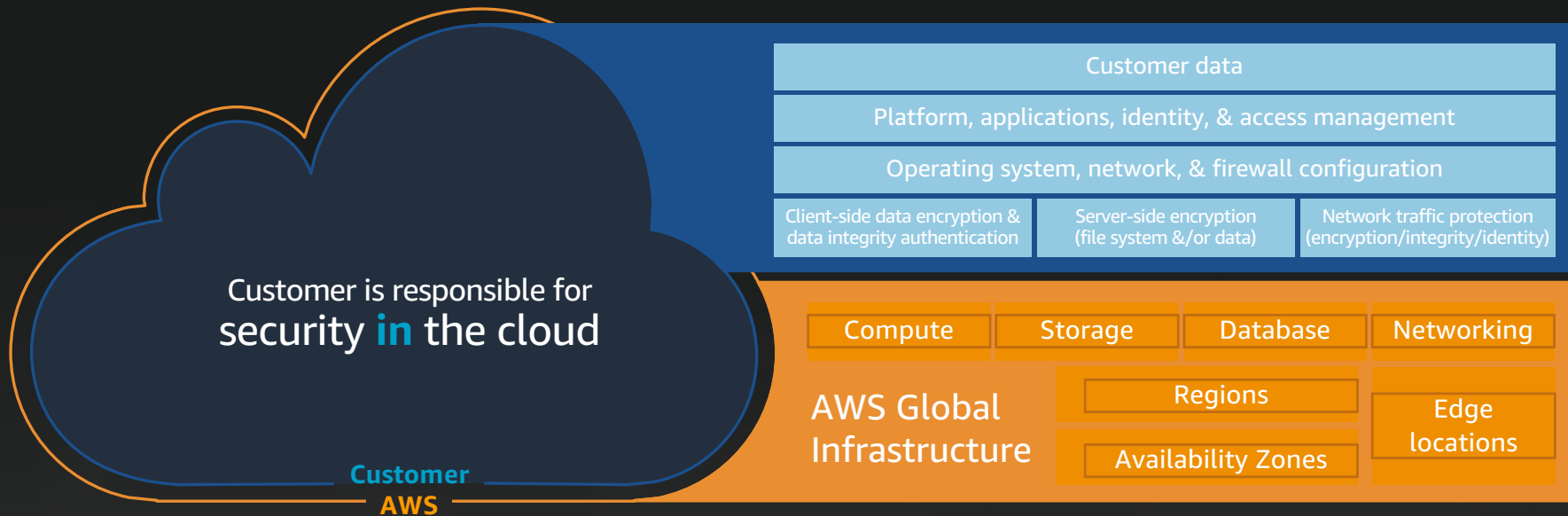
Processes approximately 6 terabytes of data and 37 billion records on an average day



Went from 3–4 weeks for server hardening to 3–4 minutes



Share your security responsibility with AWS



AWS is responsible for security **of** the cloud

U.S. Government Compliance

Sensitive Data Protection



Defense
Data



Healthcare
Data



Criminal
Data



Student
Data



Tax
Data



Weapons
Data



Financial
Data



Credit
Card
Data

Frameworks and Processes



NIST
CSF



NIST
RMF



Self-service for AWS
compliance reports

Standards



Implementing NIST's Cyber Security Framework (CSF)

Executive Order **directs** all Federal agencies to use NIST's CSF to manage cyber risk

Amazon provides **guidance** on how AWS services align to CSF

Customers can **leverage** shared cloud services and FedRAMP P-ATOs and Agency-ATOs



the WHITE HOUSE PRESIDENT DONALD J. TRUMP

BRIEFING ROOM ISSUES THE ADMINISTRATION PARTICIPATE 1600 PENN

HOME BRIEFING ROOM PRESIDENTIAL ACTIONS EXECUTIVE ORDERS

From the Press Office

Speeches & Remarks

Press Briefings

Statements & Releases

Nominations & Appointments

Presidential Actions

Executive Orders

Presidential Memoranda

Proclamations

Related OMB Material

Legislation

Disclosures

The White House
Office of the Press Secretary

For Immediate Release May 11, 2017

Presidential Executive Order on Strengthening the Cybersecurity of Federal Networks and Critical Infrastructure

Menu amazon web services Products Solutions Pricing Software Support More

AWS Security Blog

ST Tag: NIST CSF

New Whitepaper: Aligning to the NIST Cybersecurity Framework in the AWS Cloud

by Chris Gile | on 09 MAY 2017 | in Compliance | Permalink | Comments

NIST
National Institute of Standards and Technology

used the Aligning to the NIST Cybersecurity Framework in the AWS Cloud whitepaper. Both public and commercial sector can use this whitepaper to assess the AWS environment against the National Institute of Standards and Technology (NIST) Framework (CSF) and improve the security measures they implement and operate (also known as security in the cloud). It also provides a third-party auditor letter attesting to the AWS Cloud offering's conformance to NIST CSF risk practices (also known as security of the cloud), allowing organizations to properly protect their data across AWS.

14, NIST published the Framework for Improving Critical Infrastructure Cybersecurity in response to Presidential Executive Order 13526, "Improving Critical Infrastructure Cybersecurity," which called for the development of a voluntary framework to help improve the cybersecurity, risk management, and resilience of their systems. The Cybersecurity Enhancement Act of 2014 legitimized and authority of the NIST CSF by codifying it and its voluntary adoption into law, and federal agency Federal Security Modernization Act (FSMA) reporting metrics now align to the NIST CSF. Though it is intended for adoption by the private sector, the foundational set of security disciplines in the NIST CSF has been endorsed by government and industry as a baseline for use by any organization, regardless of its sector or size.

CSF Core Category	
Analysis (RS.AN): Analysis is conducted to ensure adequate response and support recovery activities.	
Cybersecurity analysis requires investigative action, forensics, and understanding of the incident. These necessarily require some level of human interaction. Though AWS services do not provide direct incident analytics, they do provide services to assist with executing a formalized process and assessing the breadth of impact.	
AWS Feature	Alignment to Cybersecurity Framework
Amazon Simple Workflow Service	Executes the steps/tasks in your response playbook. Redundantly stores the tasks, reliably dispatches them to application components, tracks their progress, and keeps their latest state.
AWS CloudTrail	Provides a history of AWS API calls, including API calls made through the AWS Management Console, AWS SDKs, command line tools, and other AWS services.
AWS Config	Maintains a configuration history.
Amazon S3	Persistence store for analytic data.
Amazon Glacier Vault Lock	Provides Write Once, Read Many (WORM) operations for archiving unaltered communication data.
Amazon CloudWatch Logs	Provides aggregated logs for analysis.
Amazon VPC Flow Logs	Provides non-sampled capture information about the IP traffic going to and from network interfaces in your VPC.

AWS Foundational and Layered Security Services



AWS Supports 18 of the CIS Top 20 Controls!

- ✓ 1. Inventory of Authorized and Unauthorized Devices
- ✓ 2. Inventory of Authorized and Unauthorized Software
- ✓ 3. Secure Configurations for Hardware and Software
- ✓ 4. Continuous Vulnerability Assessment and Remediation
- ✓ 5. Controlled Use of Administrative Privileges

- ✓ 6. Maintenance, Monitoring, and Analysis of Audit Logs
- 7. Email and Web Browser Protections
- ✓ 8. Malware Defenses
- ✓ 9. Limitation and Control of Network Ports
- ✓ 10. Data Recovery Capability
- ✓ 11. Secure Configurations for Network Devices
- ✓ 12. Boundary Defense
- ✓ 13. Data Protection
- ✓ 14. Controlled Access Based on the Need to Know
- 15. Wireless Access Control
- ✓ 16. Account Monitoring and Control
- ✓ 17. Security Skills Assessment and Appropriate Training to Fill Gaps
- ✓ 18. Application Software Security
- ✓ 19. Incident Response and Management
- ✓ 20. Penetration Tests and Red Team Exercises*

First 5 CIS Controls

Eliminates the vast majority of an organization's vulnerabilities

AKA "Cyber Hygiene"

All 20 CIS Controls

Secure your entire organization against today's most pervasive threats



Center for
Internet Security

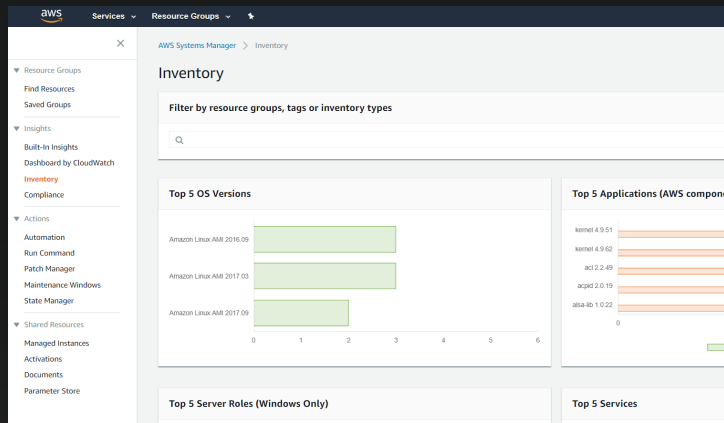




Visibility

Means of obtaining Visibility

Console



Use of resource tags

The screenshot shows the AWS Resource Groups console. The left sidebar lists various services and actions. The main content area displays a list of EC2 instances. The table has columns for Region, ID, and ProjectCode. The ProjectCode column is circled in red.

Region	ID	ProjectCode
us-west-2	i-29a0ef22	P100
eu-west-1	i-ca5f405d	P100
us-east-1	i-00de5522bfe3536ab	P100
us-east-1	i-0ead27b83afef0307	P200
	i-0134ced7d56d94d29	
	i-127e6e9c	
	i-647969ea	

API Queries

Create new API

In Amazon API Gateway, an API refers to a collection of resources and methods that can be invoked through HTTPS endpoints.

☐ New API ☐ Clone from existing API ☐ Import from Swagger ☒ Example API

Example API

Learn about the service by importing an example API and turning on hints throughout the console.

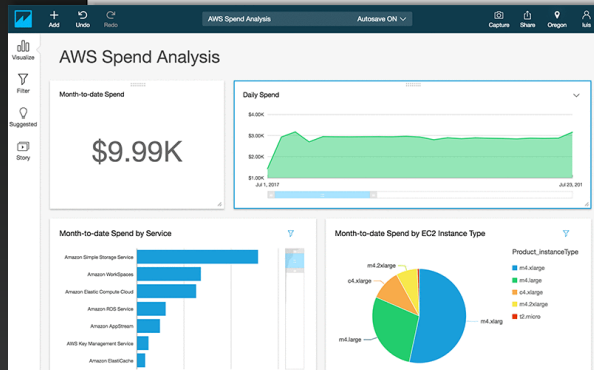
```
1 {
2   "swagger": "2.0",
3   "info": {
4     "title": "PetStore"
5   },
6   "schemes": [
7     "https"
8   ],
9   "paths": {
10    "/": {
11      "post": {
12        "produces": [
13          "application/json"
14        ],
15        "responses": {
16          "200": {
17            "description": "200 response",
18            "schema": {
19              "$ref": "#/definitions/empty"
20            }
21          }
22        }
23      }
24    }
25  }
```

Import

CLI Describe

```
$ aws ec2 describe-instances --output text
889279108296    r-dc2428b2    058890971305
DevServer      sg-6afb1e02
ec2-107-20-138-116.compute-1.amazonaws.com    e
.252.87.115    None    i-b15c1fd2    ami-31814f5
None    t1.micro    xen    i386    aki-8
MONITORING    enabled
STATE    16    running
DevServer      sg-6afb1e02
PLACEMENT    default    None    us-east-1a
/dev/sda1
EBS    attached    False    vol-4616cc2b    2
/dev/sdf
EBS    attached    False    vol-1ab26877    2
/dev/sdh
EBS    attached    False    vol-fcd30991    2
/dev/sdg
```

Business Intelligence Tools



AWS Services that provide Operational Visibility

Network & Perimeter



AWS WAF

Track application access/denials



Amazon VPC

Track network activity of VPC

Flow logs

OS and Applications



AWS Systems Manager

Inventory and manage instances



Amazon Inspector

Analyze OS and application security

AWS Services & Activity



AWS Trusted Advisor

Guidance to reduce cost, increase performance, and improve security



Personal Health Dashboard

Personalized view of AWS services' health



AWS CloudTrail

Track user activity and API usage



Amazon CloudWatch

Monitor resources and applications

Detection & Analysis



Amazon GuardDuty

Intelligent threat detection



AWS Security Hub

Unified security and compliance Center



Amazon Macie

Discover, classify, and protect sensitive data



Amazon Detective

Analyze and investigate events



Resiliency

AWS Global Infrastructure

24

Regions

77

Availability
Zones

205

Edge
Locations



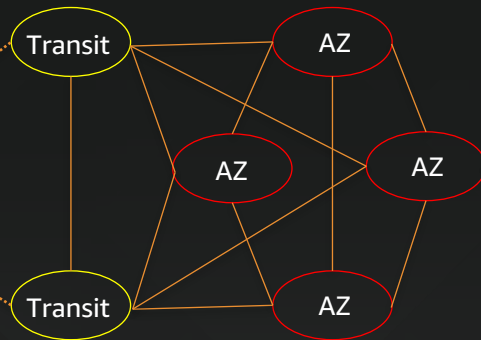
Scale globally with resilience **in every region**

The largest global foot print consistently built with a multi-AZ and multi-datacenter design



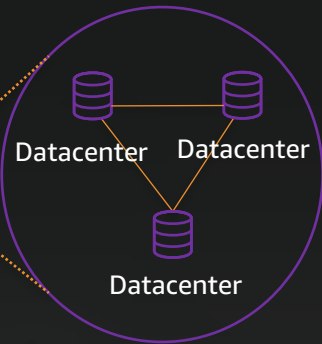
- Regions
- Coming Soon

AWS Region



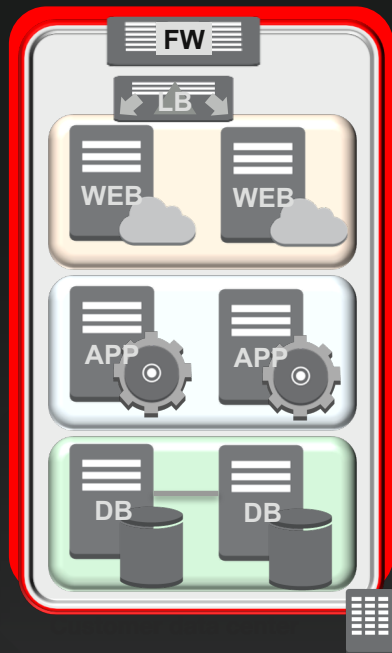
A **Region** is a physical location in the world where we have multiple **Availability Zones**.

AWS Availability Zone (AZ)

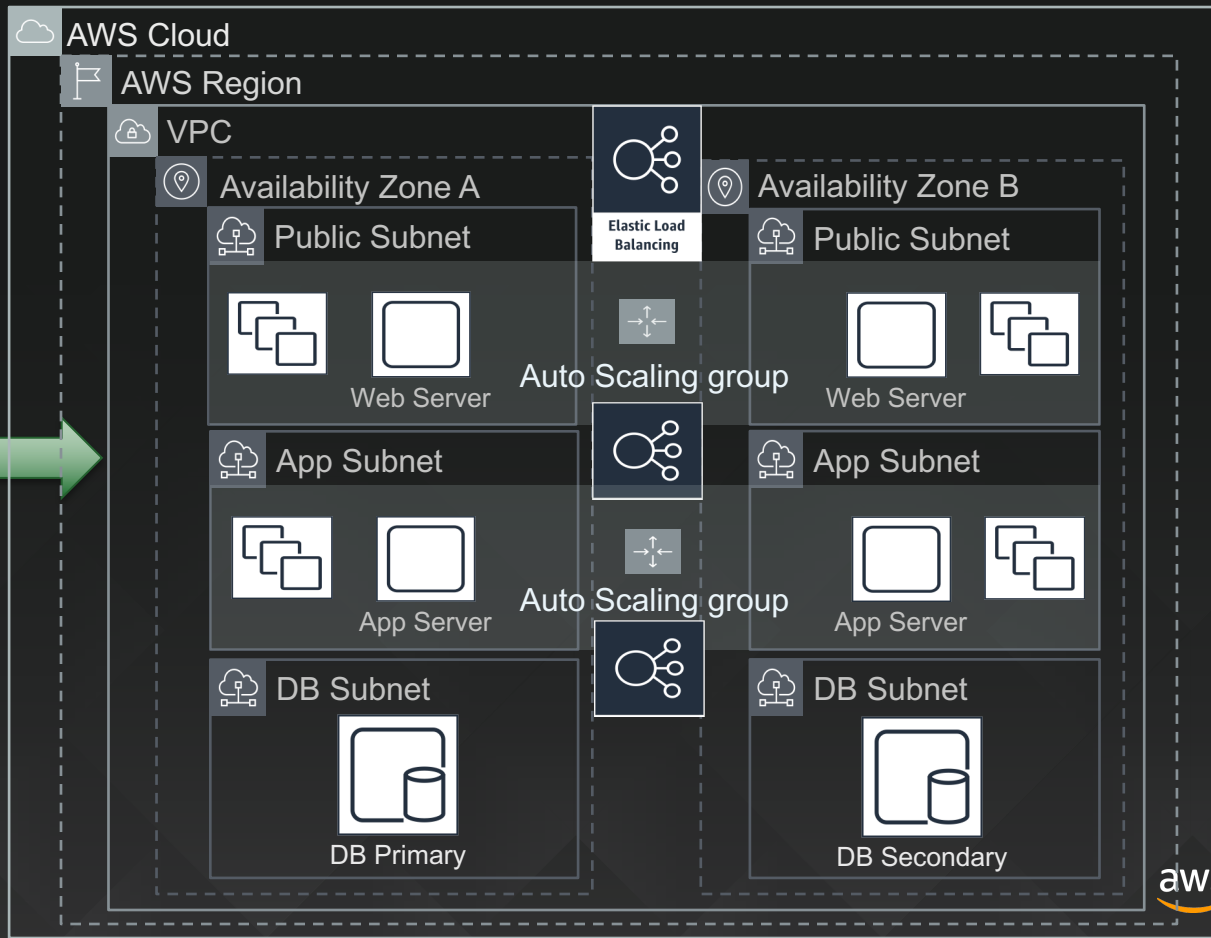


Availability Zones consist of one or more discrete **data centers**, each with redundant power, networking, and connectivity, housed in separate facilities.

Achieving High Availability in AWS



Customer Datacenter



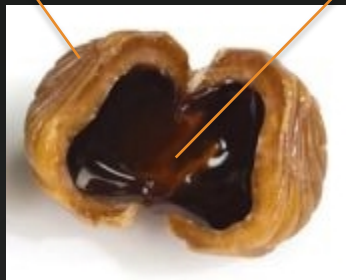


Defense in Depth

Reality of Many On-Prem Network Defenses

Hard Outer Shell
(Perimeter)

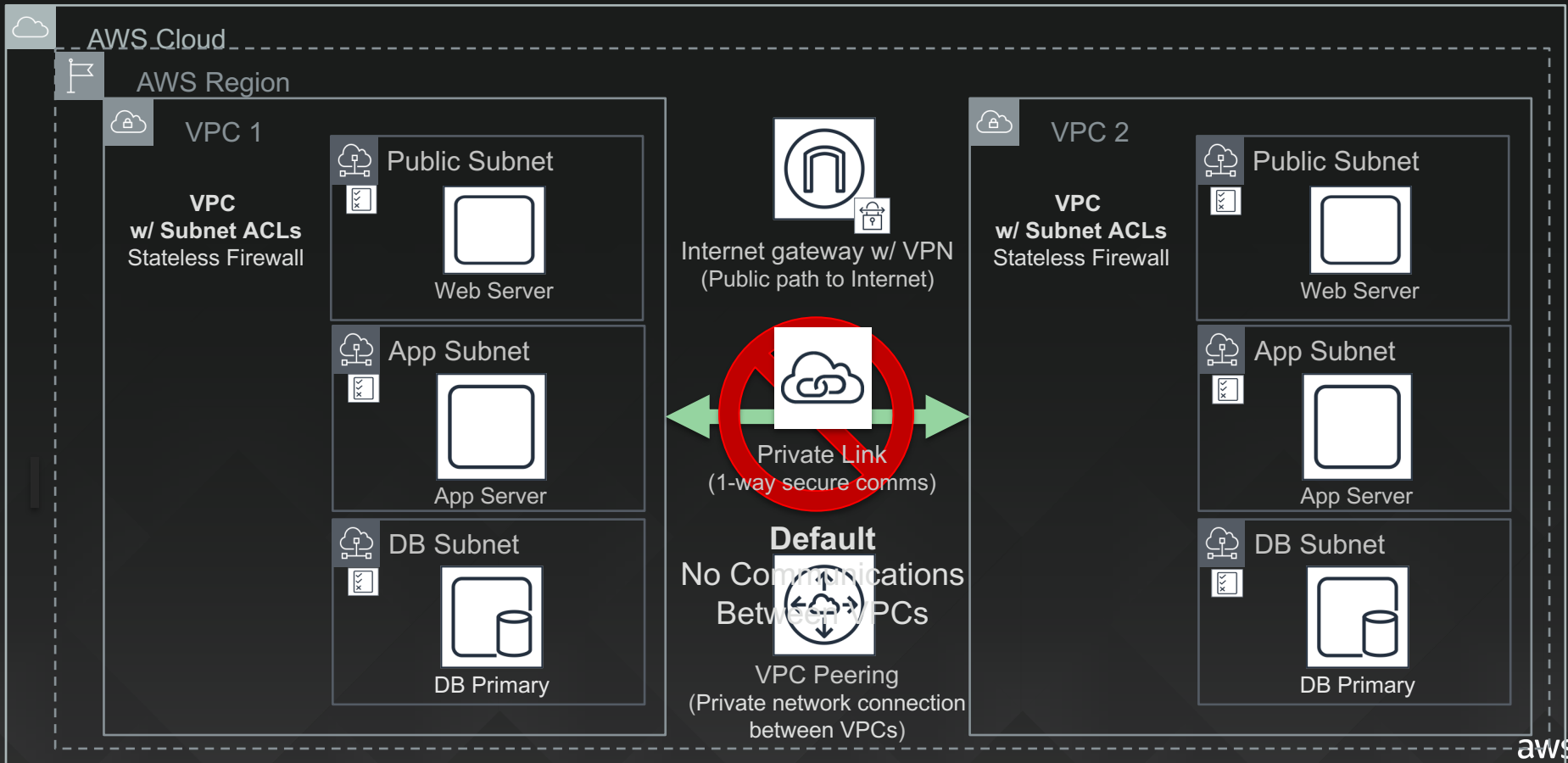
WAF
Firewall
IDS/IPS
DLP



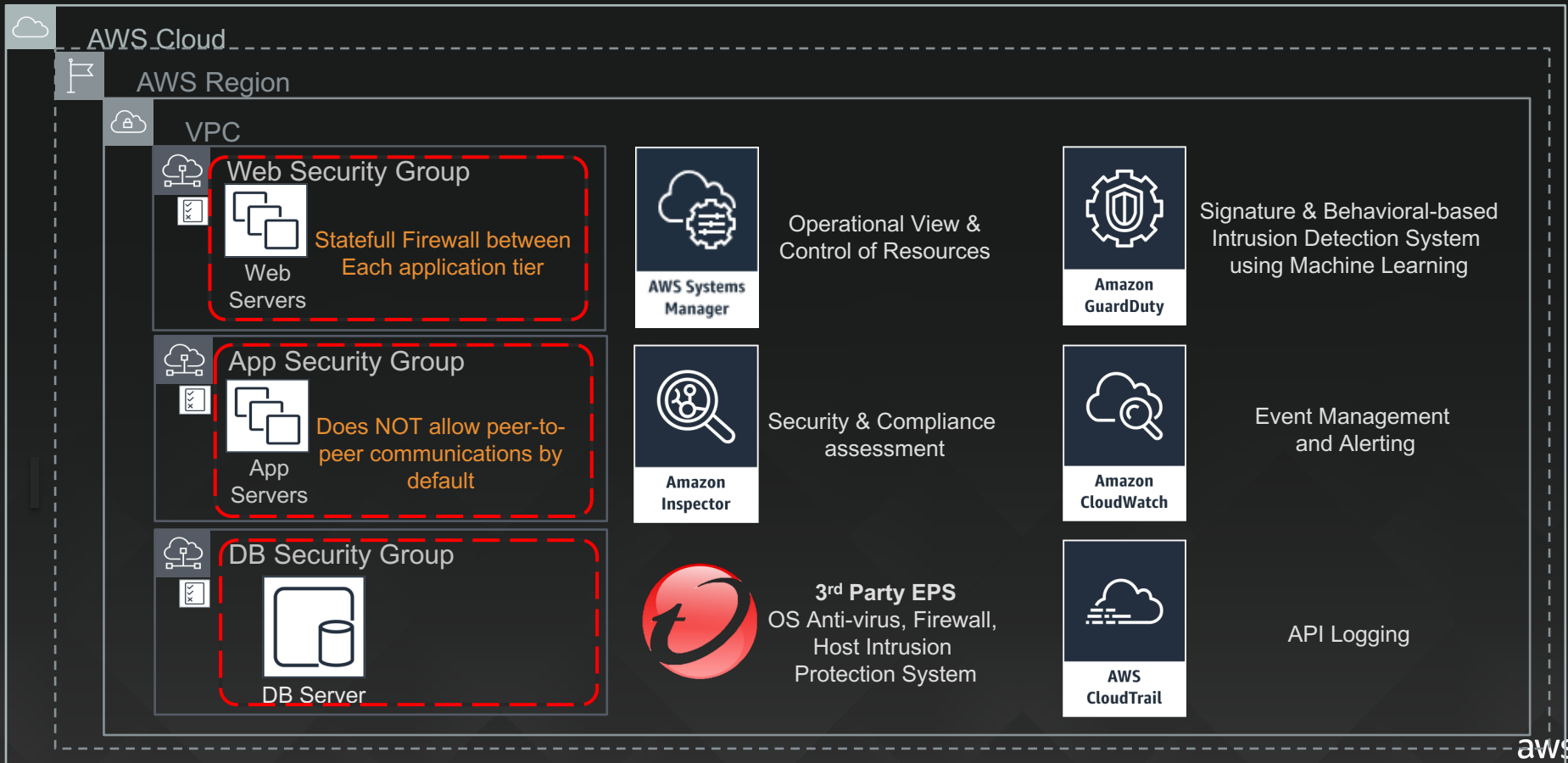
Soft and Goopy Middle
(LAN / Datacenter)

VLANs
ACLs
EPS

Defense-in-Depth in **AWS** between **Workloads**



Defense-in-Depth in **AWS** inside the **Workload**





Automation



Amazon GuardDuty IDS



Reconnaissance

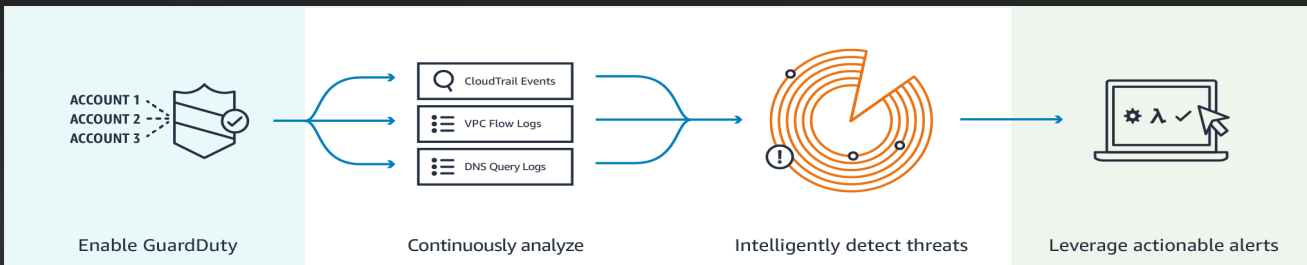
- Instance recon:
 - Port probe / accepted comm
 - Port scan (intra-VPC)
 - Brute force attack (IP)
 - Drop point (IP)
 - Tor communications
 - Account recon
 - Tor API call (failed)
- Detections in gray are signature based, state-less findings
- Detections in blue are behavioral, state-full findings / anomaly detections

Instance compromise

- C&C activity
- Malicious domain request
- EC2 on threat list
- Drop point IP
- Malicious comms (ASIS)
- Bitcoin mining
- Outbound DDoS
- Spambot activity
- Outbound SSH brute force
- Unusual network port
- Unusual traffic volume/direction
- Unusual DNS requests

Account compromise

- Malicious API call (bad IP)
- Tor API call (accepted)
- CloudTrail disabled
- Password policy change
- Instance launch unusual
- Region activity unusual
- Suspicious console login
- Unusual ISP caller
- Mutating API calls (create, update, delete)
- High volume of describe calls
- Unusual IAM user added



Automate with integrated services

Amazon GuardDuty



Amazon
GuardDuty



AWS Security
Hub



Selected
findings



Amazon
CloudWatch



CloudWatch
Event

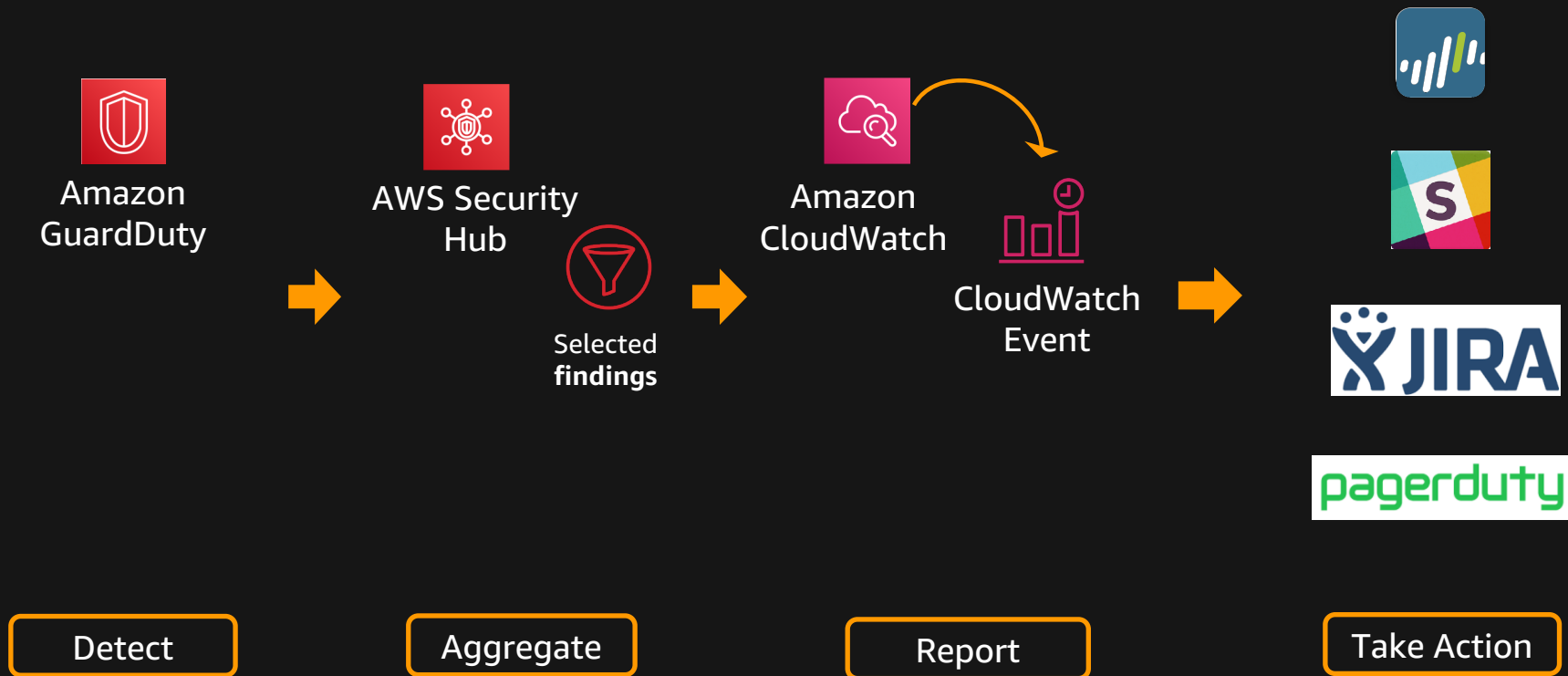
Detect

Aggregate

Report



Automate with integrated services



AWS security solutions



Identity

AWS Identity & Access Management (IAM)
AWS Organizations
AWS Directory Service
AWS Single Sign-On
AWS Cognito
AWS Secrets Manager
Resource Access Manager



Detective control

AWS Config
AWS Security Hub
Amazon GuardDuty
Amazon CloudWatch
AWS CloudTrail
VPC Flow Logs



Infrastructure security

AWS Shield
AWS Firewall Manager
AWS Web Application Firewall (WAF)
AWS Firewall Manager
Amazon Virtual Private Cloud (VPC)
Amazon EC2 Systems Manager
Amazon Inspector



Data protection

AWS Key Management Service (KMS)
AWS CloudHSM
Amazon Macie
Certificate Manager
Server Side Encryption



Incident response

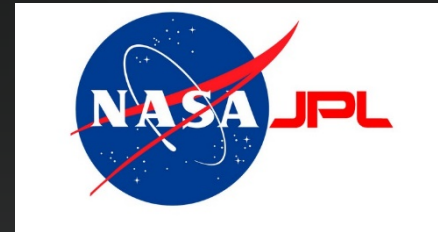
AWS Config Rules
AWS Lambda

Improving security with the cloud

“Based on our experience, I believe that we can be even more secure in the AWS cloud than in our own datacenters.”



-Tom Soderstrom, CTO, NASA JPL



For more details, see Re:Invent 2013 presentations by NASA JPL cyber security engineer Matt Derenski (<http://awsps.com/videos/SEC205E-640px.mp4>)

Elevate your security with AWS





Thank you!

Questions?

mlsouth@amazon.com

