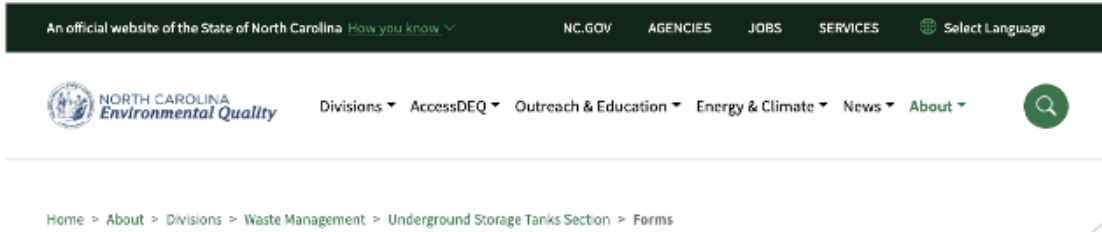


DEQ's Permitting Transformation Program (aka AccessDEQ)

A COUPLE OF BIG BUSINESS PROBLEMS TO SOLVE

- **Permit applications completed by the external community are analog (i.e., Word docs, fillable PDFs)**
- **Aggregating data into actionable/meaningful information is difficult and time-consuming (e.g., how many underground storage tank diesel leaks reported in 2023 in Mecklenburg County were the result of a damaged spill bucket?)**

CURRENT METHOD TO FILL OUT A PERMIT APPLICATION



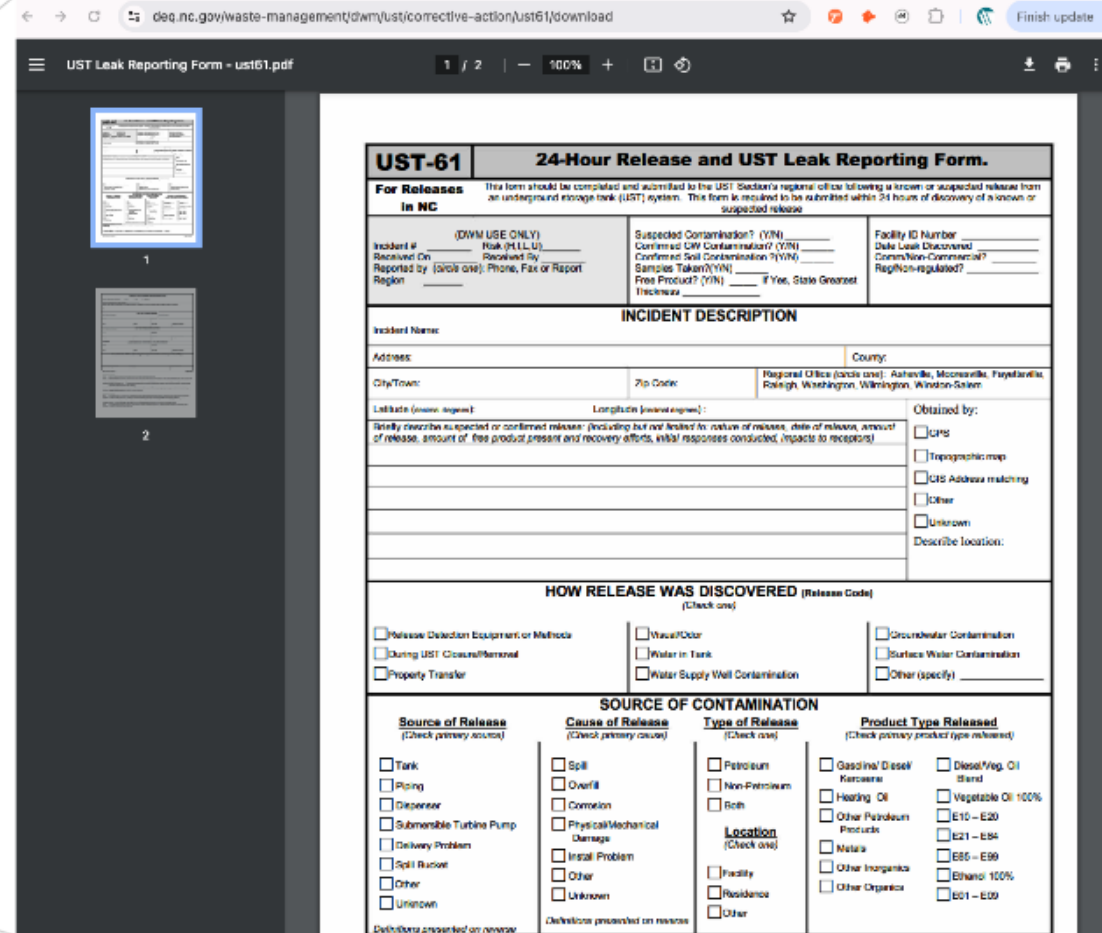
UST Forms

Note: Some PDFs are dynamic fillable forms with functionality to add/remove pages in the document that do not open with MS Edge or Chrome PDF plugin. To open those forms using MS Edge or Chrome you will need to use your local PDF reader installed on your computer (e.g. Adobe Reader). For instructions on how to change Chrome's settings to open these forms [click here](#). For instructions for MS Edge [click here](#).

	Corrective Action	PDF	Word Document
UST-61	24-Hour Release and UST Leak Reporting Form	PDF	
UST-62	24-Hour Notification of Discharge Form	PDF	
	Instructions and Form for Notice of Residual Petroleum (UST Releases)		WORD
	Instructions and Form for Notice of Residual Petroleum with Alternate Land Use Restriction		WORD

Underground Storage Tanks Section

- [Colonial Pipeline Spill Information - Huntersville, N.C.](#)
- [UST Programs and Information](#)
- [What's New](#)
- [Corrective Action for UST Petroleum Releases](#)
- [Reasonable Rate Documents](#)
- [Petroleum AST Program](#)
- [Trust Fund for USTs](#)
- [Non-UST Petroleum](#)



132 PERMIT APPLICATION FORMS !!



[Home](#) > [AccessDEQ](#) > [Permit Directory](#) > [DEQ List of Permits](#)

DEQ List of Permits

This permit directory, produced by the N.C. Department of Environmental Quality, centralizes all of the department's permit information. It is a guide that covers North Carolina's most commonly required environmental permits, licenses, certifications, approvals, etc. By using this directory, NCDEQ hopes that you can quickly gain an initial understanding of regulatory requirements for various permitted activities.

As of January 2024, the 1-page information sheets about each permit are in the process of being updated with a project completion date of April 2024. In the meantime, if you have any questions about the content, contact the program as indicated on the information sheet.

Please note: North Carolina's 2023 Appropriations Act, [Session Law 2023-134](#), includes fee adjustments for 28 Department of Environmental Quality (DEQ) programs to support the delivery of services and state employee salaries.

[2023 Fee Updates](#)

Note: Use the arrows next to the column headers to sort the directory alphabetically, by category (or media), or simply type a keyword into the search bar.

North Carolina Environmental Quality

UST Forms

Note: some forms are dynamic. Fill a form with field validity to add dynamic pages to the document that do not open with this edge or chrome extension page. To open these forms using Edge or Chrome you will need to use your local PDF reader installed on your computer by clicking the links. For instructions on how to change Chrome web app to open these forms click here. For instructions for MS Edge click here.

Form ID	Form Name	PDF	Word Document
UST-01	24-Hour Release and UST Leak Reporting Form	PDF	
UST-02	24-Hour Notification of Discharge Form	PDF	
	Instructions and forms for 24-hour Notification of Discharge (UST 02-01-04)		WORD
	Instructions and forms for 24-hour Notification of Discharge (UST 02-01-04)		WORD

UST-01 24-Hour Release and UST Leak Reporting Form

Pre-Release to UST

INCIDENT DESCRIPTION

HOW RELEASE WAS DISCOVERED

SOURCE OF CONTAMINATION

External Portal

North Carolina Environmental Quality

My AccessDEQ

- Start a New Application
- Applications
- Invoices
- Documents
- Locations
- Permits & Projects
- Messages
- Settings



Internal System

SANDBOX

PA-021556 - 0001

Initial Application - 1/18/2024

Initial Application Process

General Information

General: Type, Permit Type, Permit, Engine, Facility, Other author of record, Dates Recd., Agency, Reason for Discontinuance, Dates, Start Date, End Date, Original Submission Date, Last Submission Date

Related Parties

Related Parties: Point Contact, Secondary Contact, Permit Applicant, Registered Agency, Permit Contact, Engineering/Consulting Firm, Address of Applicant

Notes

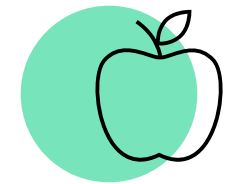
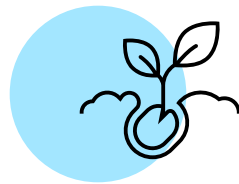
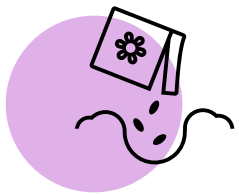
Messages

Documents

DEQ Data Platform

PLATFORM MODERNIZATION COMPONENTS

TIGHTLY INTEGRATED



Data Warehouse

Analysis Services

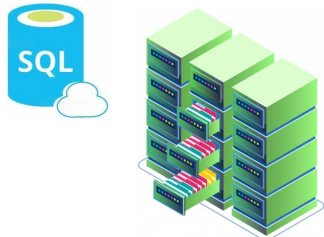
Analytics

AccessDEQ Solution

Centralization of DEQ Data Sources

DEQ Enterprise Data Model

Optimized for Data Storage

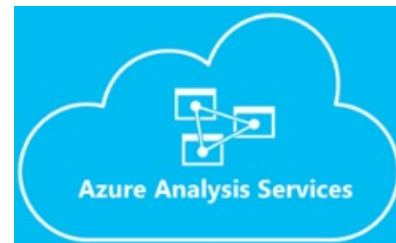


Optimized for performance (Fast)

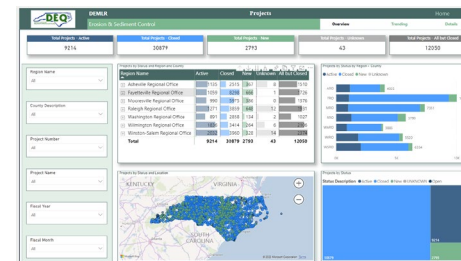
Role based security (Access)

Semantic Data Model (User Friendly)

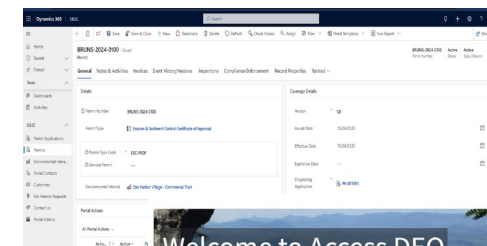
Business logic and metrics (Validated)



Interactive Visuals



Single Platform Integration
Permitting Workflow and Management
Public Portal

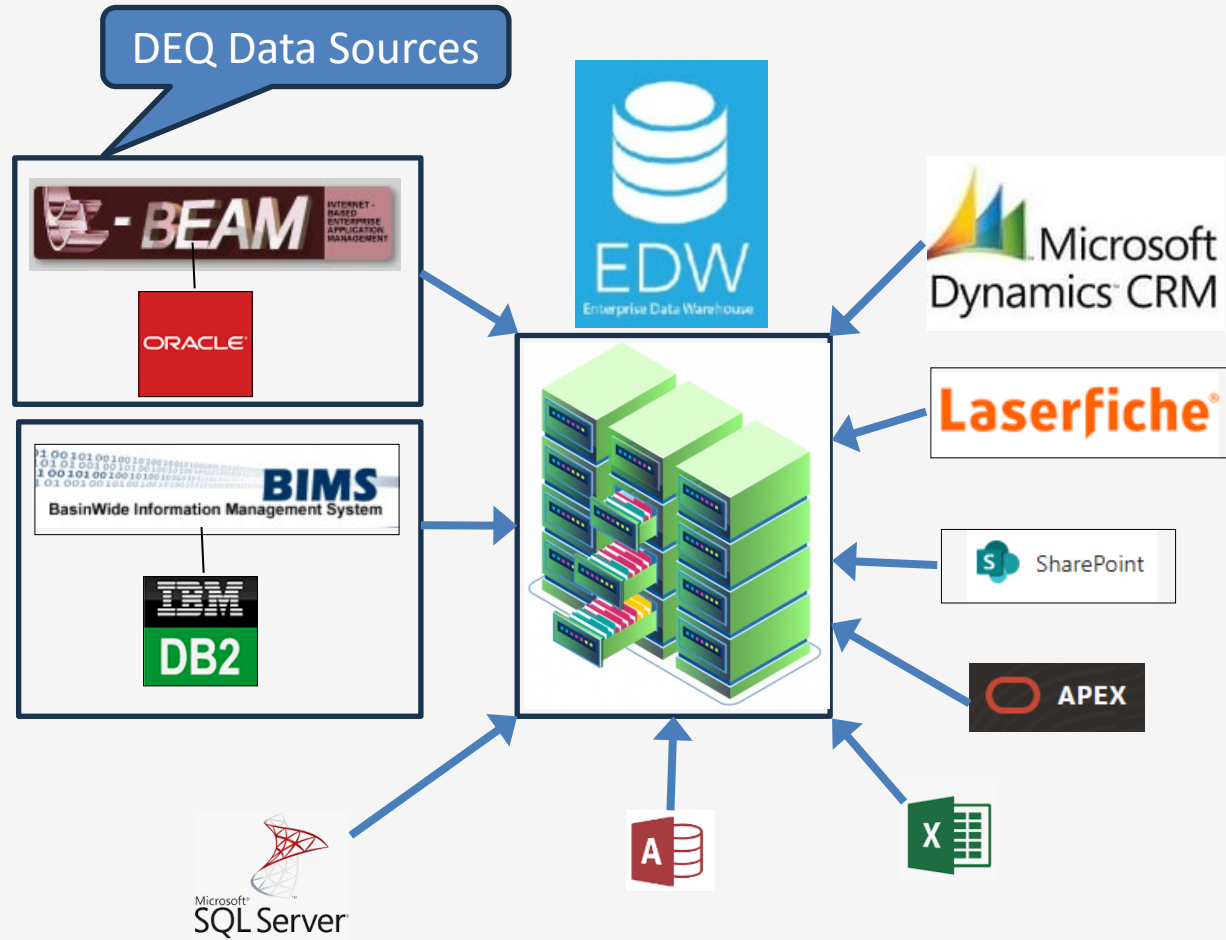


Welcome to the Access DEQ online permitting portal.

Enterprise Data Warehouse (EDW)

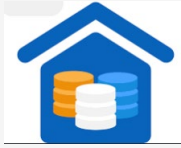


- The EDW acts as the single repository for all DEQ data sources. No data is left behind.
- The DEQ Common Data Model promotes consistency.
- Centralizes DEQ data originating from multiple data sources and applications.
- Makes data available in the cloud ready for Azure Analysis Services.
- Original data sources and systems remain untouched.

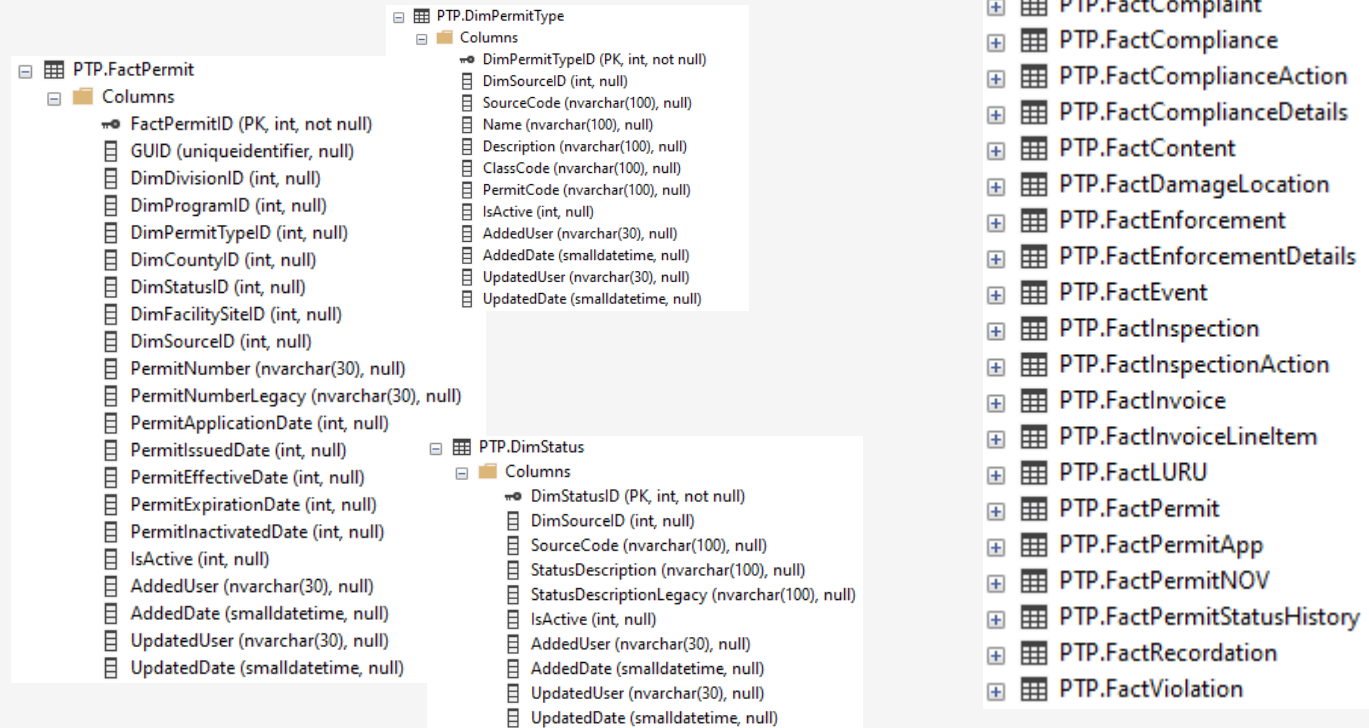


Enterprise Data Warehouse

Data Modeling



- **Permit - Fact Table**
- **Permit Type – Dimension Table**
- **Status – Dimension Table**

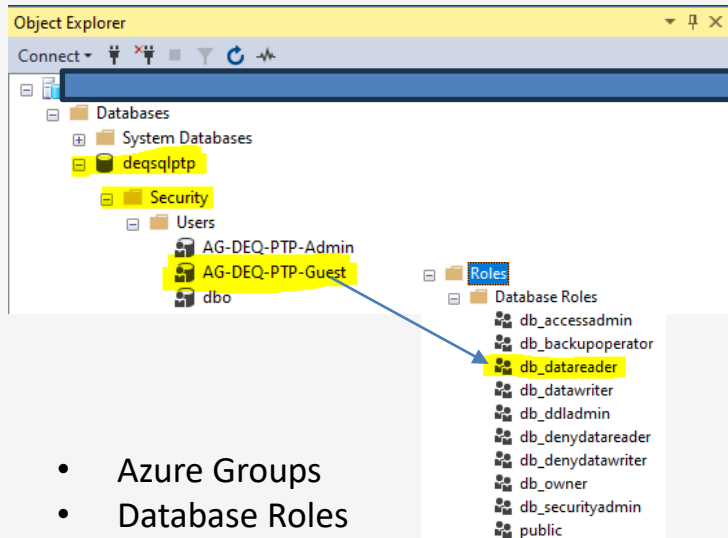
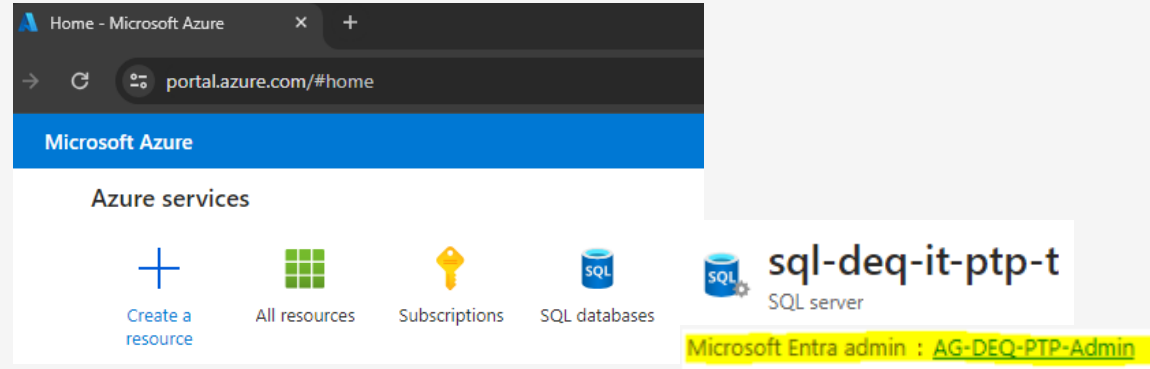
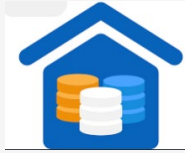


- A fact table is the central table in a star schema of a data warehouse. A fact table stores quantitative information for analysis and is often denormalized.
- A fact table works with dimension tables. A fact table holds the data to be analyzed, and a dimension table stores data about the ways in which the data in the fact table can be analyzed.

<https://www.techtarget.com/searchdatamanagement/definition/fact-table>

Enterprise Data Warehouse

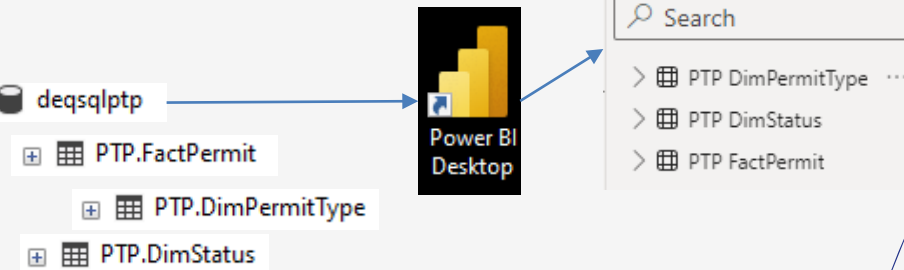
Hosting & Security



- Azure Groups
- Database Roles



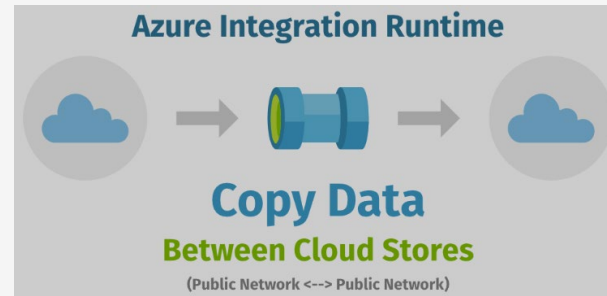
DEQ Power Users



Azure Data Factory



Pipelines



<https://www.cathrinwilhelmsen.net/integration-runtimes-azure-data-factory/>

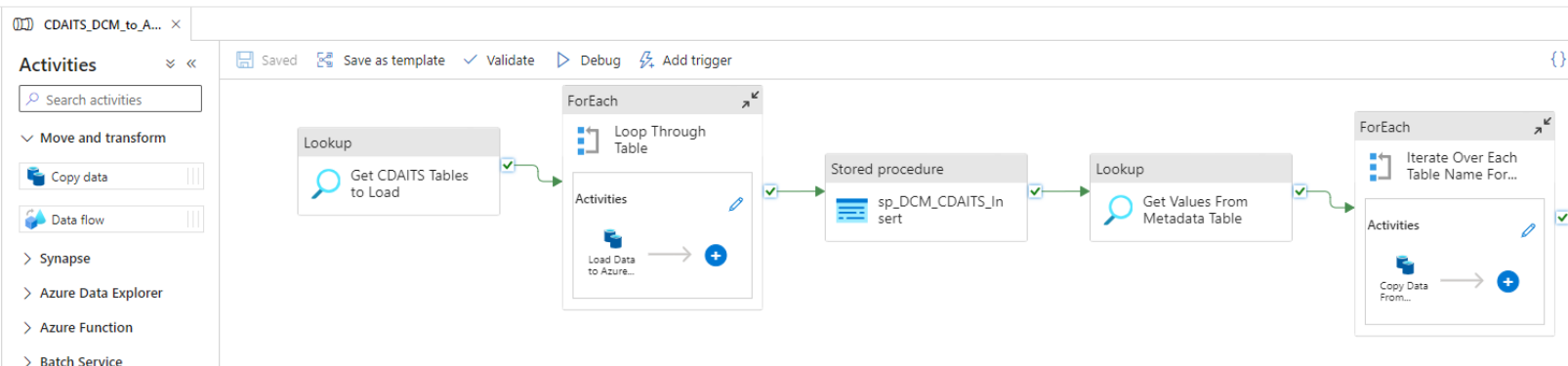
Microsoft Azure | Data Factory | adfdeqitpp

Factory Resources

Filter resources by name

Pipelines

- DEV 9
- DEV_ARCHIVE 9
- INT 9
- ON DEMAND 13
- PROD 19
 - BLOB_CONTENT_to_Azure_deqsqltp_P
 - DYNAMICS_APPDEV_to_Azure_deqsqltp_P
 - DYNAMICS_CDM_to_Azure_deqsqltp_P
 - DYNAMICS_ESC_to_Azure_deqsqltp_P
 - IBEAM_ESC_to_Azure_deqsqltp_P
 - IBEAM_GLBL_to_Azure_deqsqltp_P
 - MASTER_EDW_P
 - MOVE_Stage_to_Final_PTP_DB_P
- BIMS 11
- SANDBOX 29
- TEST 10



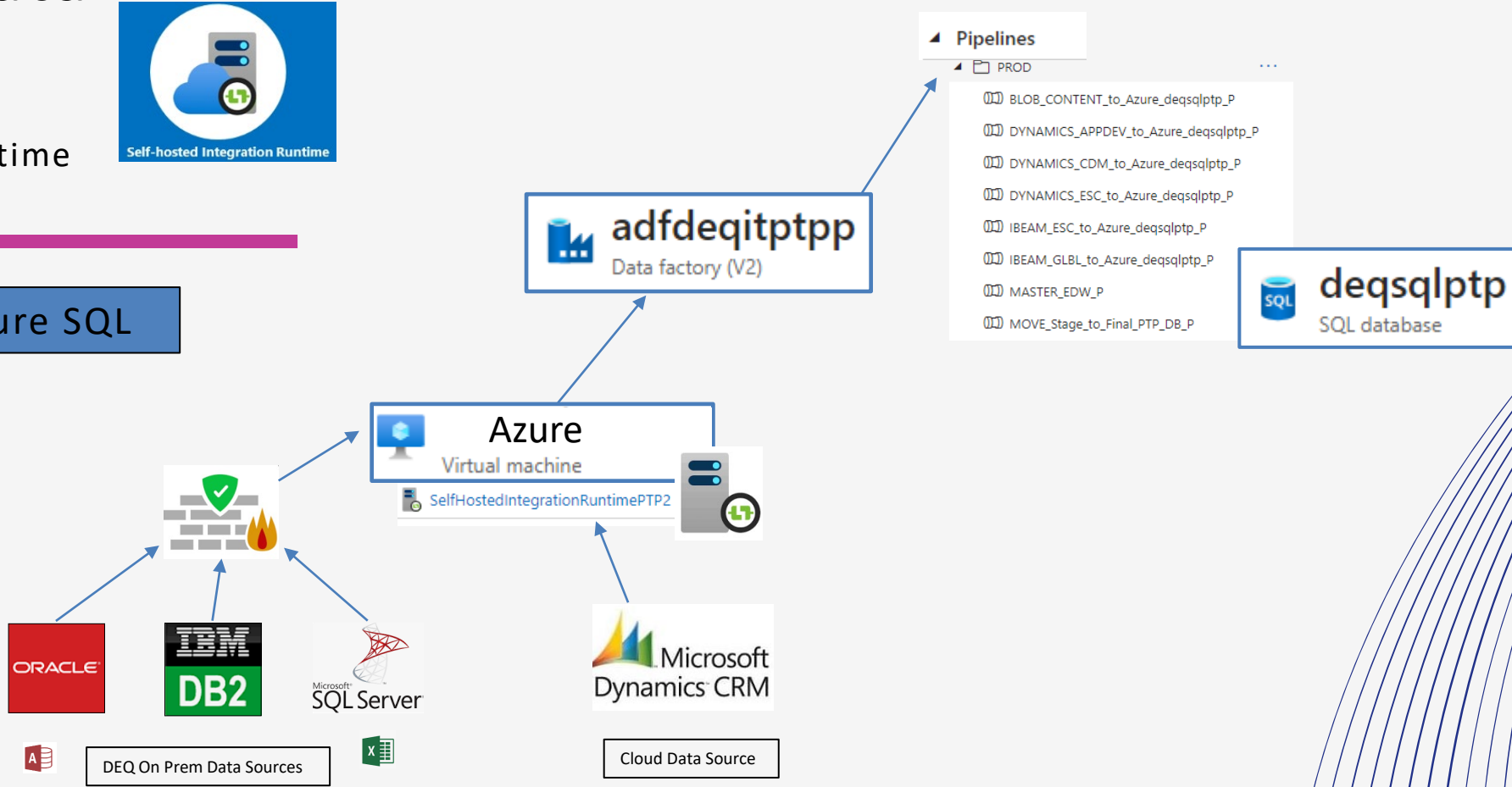
Azure Data Factory

Integration Runtime



Self-hosted Integration Runtime

Source → Azure SQL

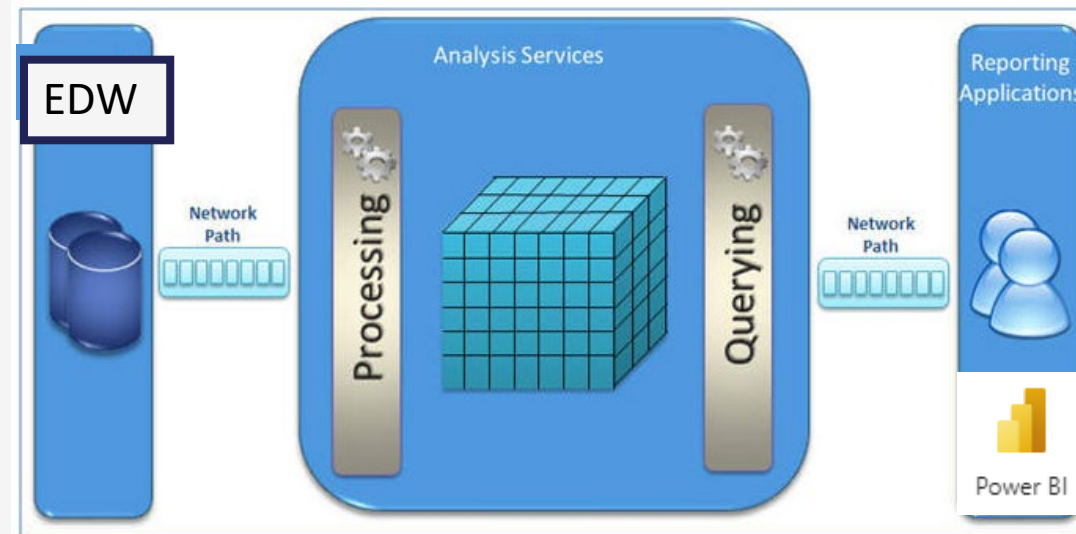


Azure Analysis Services

The Cube

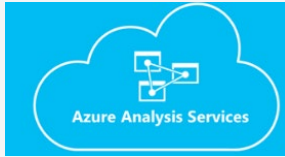


- The analytical data processing engine in the cloud.
- Presents the raw data as optimized for reports and visualizations that end users can understand.
- Where end users will go for most reporting and analysis needs:
 - Fast and responsive.
 - Role level security access to data.
 - Leverage the organizational measures and common data model.

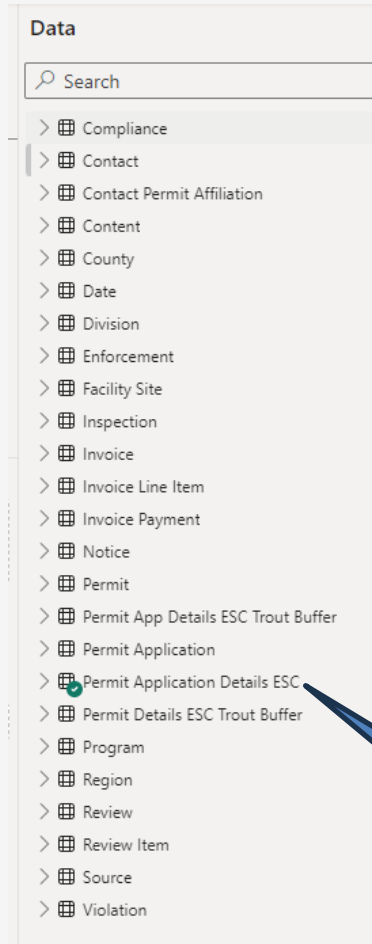


Azure Analysis Services

Key Concepts



- Pre-Defined Data Modeling
- Define & develop organizational Measures and Key Performance Indicators.
- Stored in the cube, Measures and KPI's can be reused across the enterprise promoting consistency and minimizing room for error.



Organizational Measure

SUM (Permit Applications Table [Applications])

Division	Total Applications
DAQ	34
DEMLR	331
DCM	127
DWM	50
DWR	81

✓ Total ESC Permit Applications Submitted

Semantic Data Modeling

Azure Analysis Services

Security



- Roles are setup in the cube for user access.
- Administrators can add teams or individuals to the roles.

The screenshot shows the SQL Server Enterprise Manager interface. The Object Explorer on the left shows a server instance with a 'Roles' folder containing a 'ReadOnly' role. The Role Properties window for 'ReadOnly' is open, showing the 'Membership' tab. A list of users and groups is displayed, with 'deqitdev@ncdenr.gov' highlighted in yellow. A blue arrow points from this email address to a Microsoft Teams icon labeled 'DEQ IT Development Team'.

Object Explorer

Connect [Icons]

asazure://aspaseastus2.asazure.windows.net/aasdeqitptpp (Microsoft Analysis Server 16.0.128.22)

- Databases
 - ptp
 - ptp_edw_esc
 - Connections
 - Tables
 - Roles
 - ReadOnly

Role Properties - ReadOnly

Select a page

- General
- Membership
- Row Filters

Script [Dropdown] Help [Icon]

The users and groups member of this role v associated with this role.

Specify the users and groups for this role:

- deqptpedwdemlr@deq.nc.gov
- deqitdev@ncdenr.gov
- sinoj.joseph@deq.nc.gov
- deqptpedwdwr@deq.nc.gov

DEQ IT Development Team

[Microsoft Teams Icon]

DEQ's Permitting Transformation Program (aka AccessDEQ)

A COUPLE OF BIG BUSINESS PROBLEMS TO SOLVE

- Permit applications completed by the external community are analog (i.e., Word docs, fillable PDFs)
- Aggregating data into actionable/meaningful information is difficult and time-consuming (e.g., how many underground storage tank diesel leaks reported in 2023 in Mecklenburg County were the result of a damaged spill bucket?)

CURRENT METHOD TO FILL OUT A PERMIT APPLICATION



UST Forms

Note: Some PDFs are dynamic fillable forms with functionality to add/remove pages in the document that do not open with MS Edge or Chromes PDF plugin. To open those forms using MS Edge or Chrome you will need to use your local PDF reader installed on your computer (e.g Adobe Reader). For instructions on how to change Chromes settings to open these forms [click here](#). For instructions for MS Edge [click here](#).

	Corrective Action	PDF	Word Document
UST-61	24-Hour Release and UST Leak Reporting Form	PDF	
UST-62	24-Hour Notification of Discharge Form	PDF	
	Instructions and Form for Notice of Residual Petroleum (UST Releases)		WORD
	Instructions and Form for Notice of Residual Petroleum with Alternate Land Use Restriction		WORD

Underground Storage Tanks Section

[Colonial Pipeline Spill Information - Huntersville, N.C.](#)

[UST Programs and Information](#)

[What's New](#)

[Corrective Action for UST Petroleum Releases](#)

[Reasonable Rate Documents](#)

[Petroleum AST Program](#)

[Trust Fund for USTs](#)

[Non-UST Petroleum](#)

UST-61 24-Hour Release and UST Leak Reporting Form.

For Releases in NC This form should be completed and submitted to the UST Section's regional office following a known or suspected release from an underground storage tank (UST) system. This form is required to be submitted within 24 hours of discovery of a known or suspected release.

INCIDENT DESCRIPTION

HOW RELEASE WAS DISCOVERED (Release Code) (Check one)

SOURCE OF CONTAMINATION (Check primary cause)

Source of Release	Cause of Release	Type of Release	Product Type Released
<input type="checkbox"/> Tank <input type="checkbox"/> Piping <input type="checkbox"/> Dispenser <input type="checkbox"/> Submersible Turbine Pump <input type="checkbox"/> Delivery Problem <input type="checkbox"/> Spill Raiser <input type="checkbox"/> Other <input type="checkbox"/> Unknown	<input type="checkbox"/> Spill <input type="checkbox"/> Overfill <input type="checkbox"/> Corrosion <input type="checkbox"/> Physical/Mechanical Damage <input type="checkbox"/> Install Problem <input type="checkbox"/> Other <input type="checkbox"/> Unknown	<input type="checkbox"/> Petroleum <input type="checkbox"/> Non-Petroleum <input type="checkbox"/> Both Location (Check one) <input type="checkbox"/> Facility <input type="checkbox"/> Residence <input type="checkbox"/> Other	<input type="checkbox"/> Gasoline/Diesel/Kerosene <input type="checkbox"/> Heating Oil <input type="checkbox"/> Other Petroleum Products <input type="checkbox"/> Metals <input type="checkbox"/> Other Inorganics <input type="checkbox"/> Other Organics

132 PERMIT APPLICATION FORMS !!



DEQ List of Permits

This permit directory, produced by the N.C. Department of Environmental Quality, centralizes all of the department's permit information. It is a guide that covers North Carolina's most commonly required environmental permits, licenses, certifications, approvals, etc. By using this directory, NCDEQ hopes that you can quickly gain an initial understanding of regulatory requirements for various permitted activities.

As of January 2024, the 1-page information sheets about each permit are in the process of being updated with a project completion date of April 2024. In the meantime, if you have any questions about the content, contact the program as indicated on the information sheet.

Please note: North Carolina's 2023 Appropriations Act, [Session Law 2023-134](#), includes fee adjustments for 28 Department of Environmental Quality (DEQ) programs to support the delivery of services and state employee salaries.

[2023 Fee Updates](#)

Note: Use the arrows next to the column headers to sort the directory alphabetically, by category (or media), or simply type a keyword into the search bar.

